

WOULD YOU CARE ?



S. H. HOLMES CO., Ltd.
MUSIC DEPT.
NEW ORLEANS, LA.

by **CHAS. K. HARRIS**
Author of "AFTER THE BALL"
"I'M WEARING MY HEART AWAY FOR YOU" ETC.

5



STAMPER

Try this over on your Piano.

"Why Don't They Play With Me?"

Valse moderato.

Words & Music by CHAS. K. HARRIS.

The piano introduction is in 3/4 time, starting with a mezzo-forte (*mf*) dynamic. It features a simple harmonic progression in the right hand and a steady bass line in the left hand. The piece concludes with a *rit. e dim.* (ritardando and diminuendo) marking.

VOICE.

The vocal entry begins with a piano (*p*) accompaniment. The lyrics are: "1. A sweet - faced lit - tle girl of eight Climbed to her" and "2. 'I did not mean to make you cry, I guess I'll". The piano accompaniment consists of a simple harmonic accompaniment in the right hand and a steady bass line in the left hand.

The vocal entry continues with the lyrics: "fa - ther's knee, And as her head lay on his" and "go to bed, And pray for you and Mam - ma,". The piano accompaniment continues with a simple harmonic accompaniment in the right hand and a steady bass line in the left hand.

The vocal entry concludes with the lyrics: "breast too," She sobbed so plain - tive - ly; "They" and "The lit - tle dar - ling said; "And". The piano accompaniment continues with a simple harmonic accompaniment in the right hand and a steady bass line in the left hand.

Copyright MCMIV by Chas. K. Harris.
British Copyright Secured.

Complete copies may be had where you bought this.



Moderato espressivo

Words & Music by CHAS. K. HARRIS.

Lift your eyes _____ to mine my dar - ling, _____ Let me
Just sup - pose _____ I should for - sake you, _____ Break my

see _____ the love-light there, _____ For you know _____ I love you
vows, _____ leave you a - lone, _____ Just sup - pose _____ I should re -

dear - ly, _____ And to me _____ there's none so fair. _____ Yet at
ject you, _____ Take an - oth - er for my own! _____ Just sup -

times I of - ten won - der, Would you
pose that du - ty called me, Would you

care, if I'd dare, Tell you that my love had
cry, if I'd die, And my eyes were closed for -

van - ished Tell me sweet - heart would you care?
ev - er Tell me sweet - heart would you care?

rit

CHORUS.

Would you care if I should leave you? Would you

R.H.
p

L.H.

care_____ if we should part?_____ Would you care_____ if some one

told you___ That an - oth - er won my heart?___ Would you care,_____ if you had

found me___ close - ly held_____ in some - ones arms?_____ Would your

heart___ ache just a lit - tle, Tell me dar - ling, Would you care?___

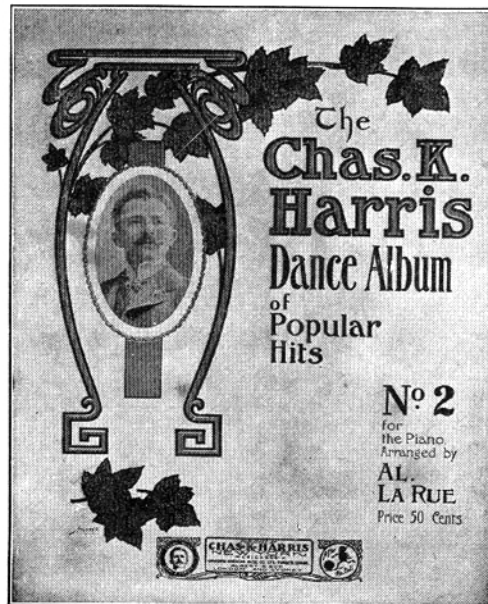
sfz *dim.* *rit.*

THE CHAS. K. HARRIS DANCE ALBUM

NUMBER 2

Now Ready—Price 50 Cents

The
Greatest
Dance Album
Ever
Published



A glance at the contents will convince you of the superiority of the HARRIS DANCE ALBUM over all others—containing more hits and genuine successes than all other folios combined.

CONTENTS

1. Why Don't They Play With Me I'm Trying So Hard To Forget You	} Medley Waltz,	Chas. K. Harris
2. Farewell Sweetheart Oh, Kitty (Sergt. Kitty)	} Medley March,	Chas. K. Harris A. B. Sloane
3. Down In The Vale of Shenandoah You Never Spoke To Me Like That Before	} Medley Waltz,	Chas. K. Harris
4. Sweet Maid Divine Game of Love, (from Higglely-Pigglely)	} Medley Schottische,	Chas. K. Harris Maurice Levi
5. Just A Gleam of Heaven In Her Eyes Love, (from Sergt. Kitty)	} Medley Waltz,	Chas. K. Harris A. B. Sloane
6. Come Take A Trip In My Airship Nancy Clancy, (from (Higglely-Pigglely)	} Medley Waltz,	Evans & Shields Maurice Levi
7. Always In The Way I'm Wearing My Heart Away For You	} Medley March,	Chas. K. Harris
8. Good Bye My Lady Love Albany	} Polka,	Jos. E. Howard May Irwin
9. Fleur De Lis, Morceau De Salon		Chas. R. Hirst
10. HARRIS MEDLEY LANCIERS No. 2		

Introducing Why Don't They Play With Me, Love and Kisses, I'm Trying So Hard To Forget You, Just A Gleam of Heaven In Her Eyes, Sweet Maid Divine, Down In The Vale of Shenandoah, Farewell Sweetheart May.

Published by the largest ballad House in the World

CHAS. K. HARRIS

31 WEST 31st STREET, NEW YORK
Meyer Cohen, Manager

617 OGDEN BUILDING, CHICAGO, ILL.
Joe. M. Harris, Manager