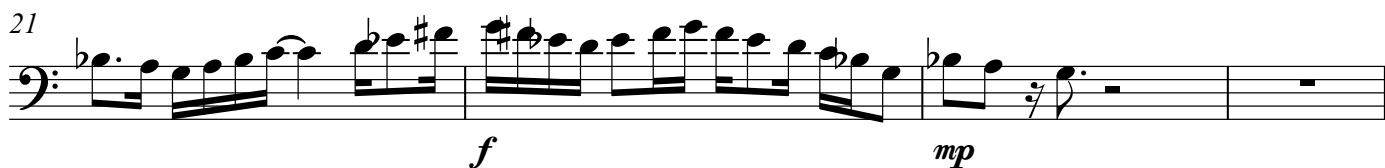
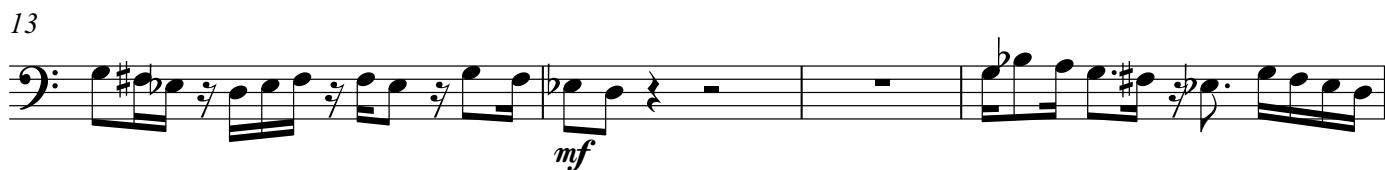
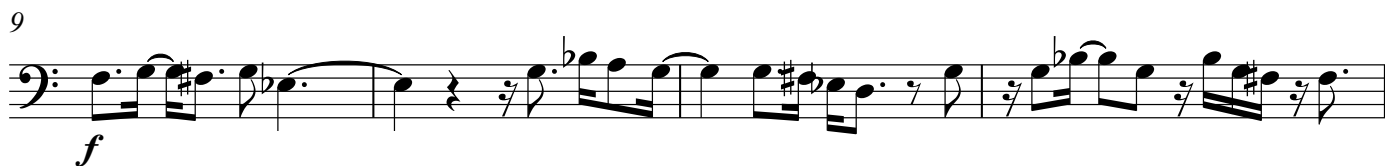


Duet for Bassoon and Bass Voice, Op.2245

Bassoon

Stephen W. Beatty (1938)

$\text{♩} = 90$



Bassoon

25



29



33



38



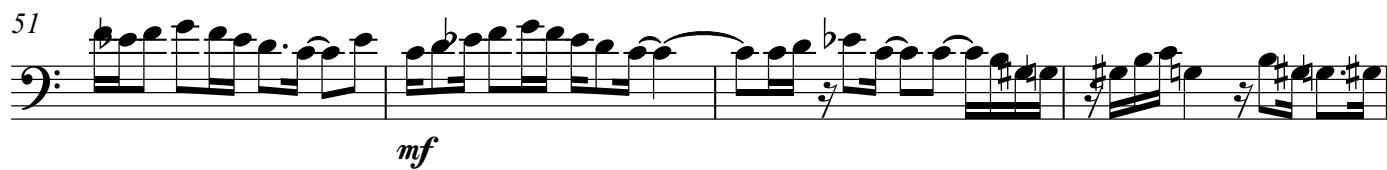
42



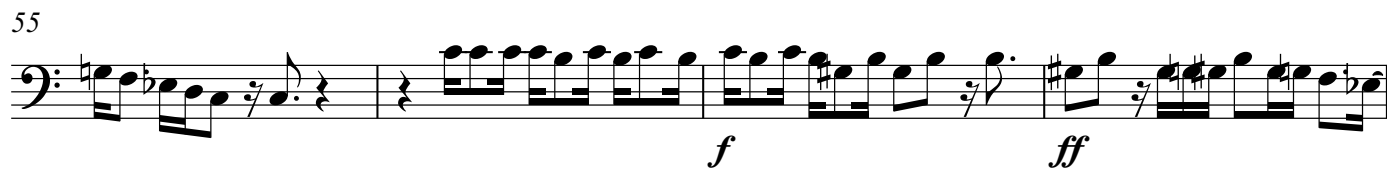
46



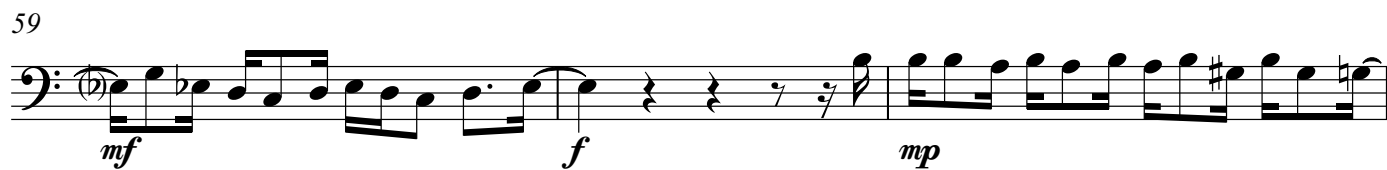
51



55



59



62



66



70



74



78



82



86



90



94



98



102



105

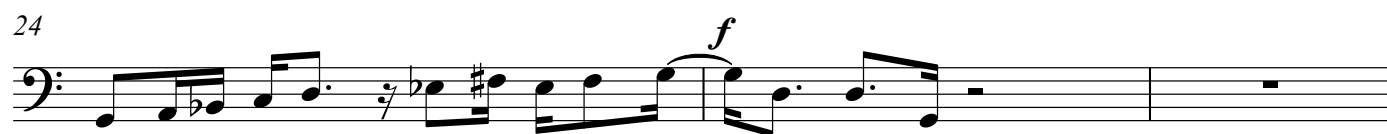
A musical score for Bassoon, measures 105-108. The notation is in bass clef with a key signature of one sharp (F#) and one flat (Bb). Measure 105 begins with a forte (*f*) dynamic and contains a sixteenth-note triplet (F#, Gb, A) followed by a dotted quarter note (Bb), an eighth rest, and a dotted quarter note (Bb). Measure 106 continues with eighth notes (Bb, A, Gb, F#), followed by a measure with a dotted quarter note (F#), an eighth rest, and a dotted quarter note (Bb). Measure 107 starts with a mezzo-forte (*mf*) dynamic and contains eighth notes (Bb, A, Gb, F#), followed by a measure with a dotted quarter note (F#), an eighth rest, and a dotted quarter note (Bb). Measure 108 features a half note (Bb) tied to the next measure, followed by a quarter rest and a final quarter note (Bb). The piece concludes with a double bar line.

Duet for Bassoon and Bass Voice, Op.2245

Bass

Stephen W. Beatty (1938)

♩ = 90



27



31



35



39



43



47



52



56



60



65



70



74



78



83



88



93



97



101



105

