

# Violin I

## Concerto H. 418 - Allegro

C.P.E. BACH

Violin

*f*

4

Vln.

8

Vln.

*p*

13

Vln.

*f*

18

Vln.

24

Vln.

*mf* *p* *f*

30

Vln.

35

Vln.

*f*

The image shows the first page of a Violin I score for C.P.E. Bach's Concerto H. 418, Allegro. The music is written in G major (one sharp) and 3/4 time. The score consists of eight staves. The first staff is labeled 'Violin' and the subsequent seven are labeled 'Vln.'. The music features various dynamics including forte (f), piano (p), mezzo-forte (mf), and fortissimo (f). There are also markings for '4' and '8' measures, and a '3' measure. The score ends with a final measure marked 'f'.

Violin I score, measures 39 to 73. The score is written for Violin I (Vln.) in G major (one sharp). The key signature is G major (one sharp).

Measures 39-43: Vln. 1. Measure 39 starts with a triplet of eighth notes (G4, A4, B4) followed by a quarter note (C5). Measure 40 has a quarter note (D5) and a quarter rest. Measure 41 has a whole rest. Measure 42 has a quarter note (G4) and a quarter rest. Measure 43 has a quarter note (F#4) and a quarter rest. Dynamics: *f* (measure 42), *p* (measure 43).

Measures 44-47: Vln. 1. Measure 44 has a quarter note (G4) and a quarter rest. Measure 45 has a quarter note (A4) and a quarter rest. Measure 46 has a quarter note (B4) and a quarter rest. Measure 47 has a quarter note (C5) and a quarter rest. Dynamics: *f* (measure 44), *p* (measure 45), *f* (measure 46), *p* (measure 47).

Measures 48-51: Vln. 1. Measure 48 has a quarter note (G4) and a quarter rest. Measure 49 has a quarter note (A4) and a quarter rest. Measure 50 has a quarter note (B4) and a quarter rest. Measure 51 has a quarter note (C5) and a quarter rest. Dynamics: *p* (measure 48), *f* (measure 51).

Measures 52-55: Vln. 1. Measure 52 has a quarter note (G4) and a quarter rest. Measure 53 has a quarter note (A4) and a quarter rest. Measure 54 has a quarter note (B4) and a quarter rest. Measure 55 has a quarter note (C5) and a quarter rest. Dynamics: *f* (measure 54).

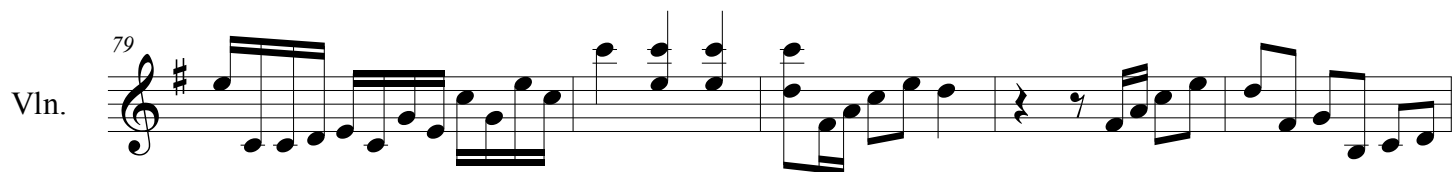
Measures 56-59: Vln. 1. Measure 56 has a quarter note (G4) and a quarter rest. Measure 57 has a quarter note (A4) and a quarter rest. Measure 58 has a quarter note (B4) and a quarter rest. Measure 59 has a quarter note (C5) and a quarter rest. Dynamics: *f* (measure 58).

Measures 60-63: Vln. 1. Measure 60 has a quarter note (G4) and a quarter rest. Measure 61 has a quarter note (A4) and a quarter rest. Measure 62 has a quarter note (B4) and a quarter rest. Measure 63 has a quarter note (C5) and a quarter rest. Dynamics: *f* (measure 61), *f* (measure 63).

Measures 64-68: Vln. 1. Measure 64 has a quarter note (G4) and a quarter rest. Measure 65 has a quarter note (A4) and a quarter rest. Measure 66 has a quarter note (B4) and a quarter rest. Measure 67 has a quarter note (C5) and a quarter rest. Measure 68 has a quarter note (D5) and a quarter rest. Dynamics: *f* (measure 64), *f* (measure 66), *f* (measure 68).

Measures 69-72: Vln. 1. Measure 69 has a quarter note (G4) and a quarter rest. Measure 70 has a quarter note (A4) and a quarter rest. Measure 71 has a quarter note (B4) and a quarter rest. Measure 72 has a quarter note (C5) and a quarter rest. Dynamics: *mf* (measure 72).

Measures 73-76: Vln. 1. Measure 73 has a quarter note (G4) and a quarter rest. Measure 74 has a quarter note (A4) and a quarter rest. Measure 75 has a quarter note (B4) and a quarter rest. Measure 76 has a quarter note (C5) and a quarter rest. Dynamics: *p* (measure 73), *f* (measure 75).



Vln. 121 *f*

Vln. 124 *p*

Vln. 128 *p* *f*

Vln. 132

Vln. 135 *p*

Vln. 139

Vln. 143 *f*

Vln. 148

Vln. 153 *mf* *p* *f*

Violin I score, measures 159 to 203. The score is written for Violin I (Vln.) in G major (one sharp). The key signature is G major (one sharp).

Measures 159-163: Vln. 159-163. Measure 159 starts with a treble clef and a key signature of one sharp (F#). The melody begins with a quarter note G4, followed by eighth notes A4, B4, and C5. Measure 160 continues with eighth notes D5, E5, and F#5. Measure 161 has a quarter note G5, followed by eighth notes F#5, E5, and D5. Measure 162 has a quarter note C5, followed by eighth notes B4, A4, and G4. Measure 163 has a quarter note F#4, followed by eighth notes E4, D4, and C4.

Measures 164-169: Vln. 164-169. Measure 164 starts with a treble clef and a key signature of one sharp (F#). The melody begins with a quarter note G4, followed by eighth notes A4, B4, and C5. Measure 165 continues with eighth notes D5, E5, and F#5. Measure 166 has a quarter note G5, followed by eighth notes F#5, E5, and D5. Measure 167 has a quarter note C5, followed by eighth notes B4, A4, and G4. Measure 168 has a quarter note F#4, followed by eighth notes E4, D4, and C4. Measure 169 has a quarter note B3, followed by eighth notes A3, G3, and F#3.

Measures 170-175: Vln. 170-175. Measure 170 starts with a treble clef and a key signature of one sharp (F#). The melody begins with a quarter note G4, followed by eighth notes A4, B4, and C5. Measure 171 continues with eighth notes D5, E5, and F#5. Measure 172 has a quarter note G5, followed by eighth notes F#5, E5, and D5. Measure 173 has a quarter note C5, followed by eighth notes B4, A4, and G4. Measure 174 has a quarter note F#4, followed by eighth notes E4, D4, and C4. Measure 175 has a quarter note B3, followed by eighth notes A3, G3, and F#3.

Measures 176-182: Vln. 176-182. Measure 176 starts with a treble clef and a key signature of one sharp (F#). The melody begins with a quarter note G4, followed by eighth notes A4, B4, and C5. Measure 177 continues with eighth notes D5, E5, and F#5. Measure 178 has a quarter note G5, followed by eighth notes F#5, E5, and D5. Measure 179 has a quarter note C5, followed by eighth notes B4, A4, and G4. Measure 180 has a quarter note F#4, followed by eighth notes E4, D4, and C4. Measure 181 has a quarter note B3, followed by eighth notes A3, G3, and F#3. Measure 182 has a quarter note G3, followed by eighth notes F#3, E3, and D3.

Measures 183-188: Vln. 183-188. Measure 183 starts with a treble clef and a key signature of one sharp (F#). The melody begins with a quarter note G4, followed by eighth notes A4, B4, and C5. Measure 184 continues with eighth notes D5, E5, and F#5. Measure 185 has a quarter note G5, followed by eighth notes F#5, E5, and D5. Measure 186 has a quarter note C5, followed by eighth notes B4, A4, and G4. Measure 187 has a quarter note F#4, followed by eighth notes E4, D4, and C4. Measure 188 has a quarter note B3, followed by eighth notes A3, G3, and F#3.

Measures 189-193: Vln. 189-193. Measure 189 starts with a treble clef and a key signature of one sharp (F#). The melody begins with a quarter note G4, followed by eighth notes A4, B4, and C5. Measure 190 continues with eighth notes D5, E5, and F#5. Measure 191 has a quarter note G5, followed by eighth notes F#5, E5, and D5. Measure 192 has a quarter note C5, followed by eighth notes B4, A4, and G4. Measure 193 has a quarter note F#4, followed by eighth notes E4, D4, and C4.

Measures 194-197: Vln. 194-197. Measure 194 starts with a treble clef and a key signature of one sharp (F#). The melody begins with a quarter note G4, followed by eighth notes A4, B4, and C5. Measure 195 continues with eighth notes D5, E5, and F#5. Measure 196 has a quarter note G5, followed by eighth notes F#5, E5, and D5. Measure 197 has a quarter note C5, followed by eighth notes B4, A4, and G4.

Measures 198-203: Vln. 198-203. Measure 198 starts with a treble clef and a key signature of one sharp (F#). The melody begins with a quarter note G4, followed by eighth notes A4, B4, and C5. Measure 199 continues with eighth notes D5, E5, and F#5. Measure 200 has a quarter note G5, followed by eighth notes F#5, E5, and D5. Measure 201 has a quarter note C5, followed by eighth notes B4, A4, and G4. Measure 202 has a quarter note F#4, followed by eighth notes E4, D4, and C4. Measure 203 has a quarter note B3, followed by eighth notes A3, G3, and F#3.

Vln. *203* *p*

Vln. *208* *f*

Vln. *213* *p* *f*

Vln. *219*

Vln. *224* *3*

This musical score for Violin I spans measures 203 to 224. The key signature is one sharp (F#). The score is divided into five systems, each labeled with a measure number and a dynamic marking. The first system (measures 203-207) begins with a piano (*p*) dynamic and features a rapid sixteenth-note run. The second system (measures 208-212) starts with a forte (*f*) dynamic and continues the sixteenth-note pattern. The third system (measures 213-218) alternates between piano (*p*) and forte (*f*) dynamics, with a melodic line in the first half and a return to the sixteenth-note texture in the second half. The fourth system (measures 219-223) continues the sixteenth-note texture. The fifth system (measures 224-224) concludes with a triplet of eighth notes and a final double bar line.