

Fagotto

# Bassoon Concerto in C major

## RV471

Antonio (Lucio) Vivaldi (1678 - 1741)

Allegro molto

5

9

14

*Piano*

20

*F.*

25

*p.* *F.*

29

33

*t.* *t.*

37

41

44

*t.* *t.* *t.* *t.* *t.* *t.* *t.* *t.*



95



101



105



109



113



118



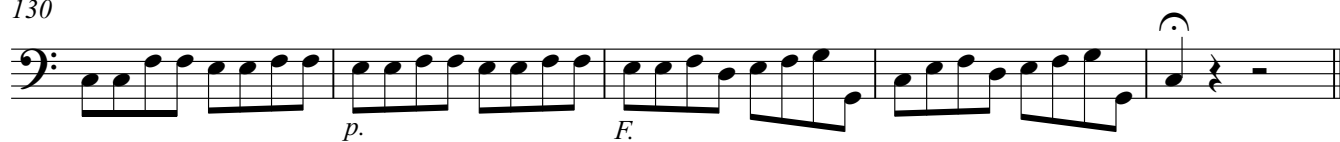
122



127



130



Larghetto

1

9

12

18

23

28

33

38

41

43

2

Allegro

7

The bass line of 'The Rose Tree' is written in 3/4 time. It begins with a treble clef and a key signature of one flat (B-flat). The melody starts on a whole note G2, followed by a half note A2, and a quarter note B-flat2. The next measure contains a half note C3 and a quarter note D3. The third measure has a half note E3 and a quarter note F3. The fourth measure consists of a half note G3 and a quarter note A3. The fifth measure features a half note B-flat3 and a quarter note C4. The sixth measure has a half note D4 and a quarter note E4. The seventh measure contains a half note F4 and a quarter note G4. The eighth measure is a half note A4 and a quarter note B-flat4. The ninth measure has a half note C5 and a quarter note D5. The tenth measure consists of a half note E5 and a quarter note F5. The eleventh measure has a half note G5 and a quarter note A5. The twelfth measure is a half note B-flat5 and a quarter note C6. The thirteenth measure has a half note D6 and a quarter note E6. The fourteenth measure contains a half note F6 and a quarter note G6. The fifteenth measure has a half note A6 and a quarter note B-flat6. The sixteenth measure is a half note C7 and a quarter note D7. The seventeenth measure has a half note E7 and a quarter note F7. The eighteenth measure contains a half note G7 and a quarter note A7. The nineteenth measure has a half note B-flat7 and a quarter note C8. The twentieth measure is a half note D8 and a quarter note E8. The twenty-first measure has a half note F8 and a quarter note G8. The twenty-second measure is a half note A8 and a quarter note B-flat8. The twenty-third measure has a half note C9 and a quarter note D9. The twenty-fourth measure is a half note E9 and a quarter note F9. The twenty-fifth measure contains a half note G9 and a quarter note A9. The twenty-sixth measure has a half note B-flat9 and a quarter note C10. The twenty-seventh measure is a half note D10 and a quarter note E10. The twenty-eighth measure has a half note F10 and a quarter note G10. The twenty-ninth measure is a half note A10 and a quarter note B-flat10. The thirtieth measure has a half note C11 and a quarter note D11. The thirty-first measure is a half note E11 and a quarter note F11. The thirty-second measure contains a half note G11 and a quarter note A11. The thirty-third measure has a half note B-flat11 and a quarter note C12. The thirty-fourth measure is a half note D12 and a quarter note E12. The thirty-fifth measure has a half note F12 and a quarter note G12. The thirty-sixth measure is a half note A12 and a quarter note B-flat12. The thirty-seventh measure has a half note C13 and a quarter note D13. The thirty-eighth measure is a half note E13 and a quarter note F13. The thirty-ninth measure contains a half note G13 and a quarter note A13. The fortieth measure has a half note B-flat13 and a quarter note C14. The forty-first measure is a half note D14 and a quarter note E14. The forty-second measure has a half note F14 and a quarter note G14. The forty-third measure is a half note A14 and a quarter note B-flat14. The forty-fourth measure has a half note C15 and a quarter note D15. The forty-fifth measure is a half note E15 and a quarter note F15. The forty-sixth measure contains a half note G15 and a quarter note A15. The forty-seventh measure has a half note B-flat15 and a quarter note C16. The forty-eighth measure is a half note D16 and a quarter note E16. The forty-ninth measure has a half note F16 and a quarter note G16. The fiftieth measure is a half note A16 and a quarter note B-flat16. The fifty-first measure has a half note C17 and a quarter note D17. The fifty-second measure is a half note E17 and a quarter note F17. The fifty-third measure contains a half note G17 and a quarter note A17. The fifty-fourth measure has a half note B-flat17 and a quarter note C18. The fifty-fifth measure is a half note D18 and a quarter note E18. The fifty-sixth measure has a half note F18 and a quarter note G18. The fifty-seventh measure is a half note A18 and a quarter note B-flat18. The fifty-eighth measure has a half note C19 and a quarter note D19. The fifty-ninth measure is a half note E19 and a quarter note F19. The sixtieth measure contains a half note G19 and a quarter note A19. The sixty-first measure has a half note B-flat19 and a quarter note C20. The sixty-second measure is a half note D20 and a quarter note E20. The sixty-third measure has a half note F20 and a quarter note G20. The sixty-fourth measure is a half note A20 and a quarter note B-flat20. The sixty-fifth measure has a half note C21 and a quarter note D21. The sixty-sixth measure is a half note E21 and a quarter note F21. The sixty-seventh measure contains a half note G21 and a quarter note A21. The sixty-eighth measure has a half note B-flat21 and a quarter note C22. The sixty-ninth measure is a half note D22 and a quarter note E22. The seventieth measure has a half note F22 and a quarter note G22. The seventy-first measure is a half note A22 and a quarter note B-flat22. The seventy-second measure has a half note C23 and a quarter note D23. The seventy-third measure is a half note E23 and a quarter note F23. The seventy-fourth measure contains a half note G23 and a quarter note A23. The seventy-fifth measure has a half note B-flat23 and a quarter note C24. The seventy-sixth measure is a half note D24 and a quarter note E24. The seventy-seventh measure has a half note F24 and a quarter note G24. The seventy-eighth measure is a half note A24 and a quarter note B-flat24. The seventy-ninth measure has a half note C25 and a quarter note D25. The eightieth measure is a half note E25 and a quarter note F25. The eighty-first measure contains a half note G25 and a quarter note A25. The eighty-second measure has a half note B-flat25 and a quarter note C26. The eighty-third measure is a half note D26 and a quarter note E26. The eighty-fourth measure has a half note F26 and a quarter note G26. The eighty-fifth measure is a half note A26 and a quarter note B-flat26. The eighty-sixth measure has a half note C27 and a quarter note D27. The eighty-seventh measure is a half note E27 and a quarter note F27. The eighty-eighth measure contains a half note G27 and a quarter note A27. The eighty-ninth measure has a half note B-flat27 and a quarter note C28. The ninetieth measure is a half note D28 and a quarter note E28. The hundredth measure has a half note F28 and a quarter note G28. The hundred-first measure is a half note A28 and a quarter note B-flat28. The hundred-second measure has a half note C29 and a quarter note D29. The hundred-third measure is a half note E29 and a quarter note F29. The hundred-fourth measure contains a half note G29 and a quarter note A29. The hundred-fifth measure has a half note B-flat29 and a quarter note C30. The hundred-sixth measure is a half note D30 and a quarter note E30. The hundred-seventh measure has a half note F30 and a quarter note G30. The hundred-eighth measure is a half note A30 and a quarter note B-flat30. The hundred-ninth measure has a half note C31 and a quarter note D31. The hundred-tieth measure is a half note E31 and a quarter note F31. The hundred-first measure contains a half note G31 and a quarter note A31. The hundred-twelfth measure has a half note B-flat31 and a quarter note C32. The hundred-thirteenth measure is a half note D32 and a quarter note E32. The hundred-fourteenth measure has a half note F32 and a quarter note G32. The hundred-fifteenth measure is a half note A32 and a quarter note B-flat32. The hundred-sixteenth measure has a half note C33 and a quarter note D33. The hundred-seventeenth measure is a half note E33 and a quarter note F33. The hundred-eighteenth measure contains a half note G33 and a quarter note A33. The hundred-nineteenth measure has a half note B-flat33 and a quarter note C34. The hundred-twentieth measure is a half note D34 and a quarter note E34. The hundred-twenty-first measure has a half note F34 and a quarter note G34. The hundred-twenty-second measure is a half note A34 and a quarter note B-flat34. The hundred-twenty-third measure has a half note C35 and a quarter note D35. The hundred-twenty-fourth measure is a half note E35 and a quarter note F35. The hundred-twenty-fifth measure contains a half note G35 and a quarter note A35. The hundred-twenty-sixth measure has a half note B-flat35 and a quarter note C36. The hundred-twenty-seventh measure is a half note D36 and a quarter note E36. The hundred-twenty-eighth measure has a half note F36 and a quarter note G36. The hundred-twenty-ninth measure is a half note A36 and a quarter note B-flat36. The hundred-thirtieth measure has a half note C37 and a quarter note D37. The hundred-thirty-first measure is a half note E37 and a quarter note F37. The hundred-thirty-second measure contains a half note G37 and a quarter note A37. The hundred-thirty-third measure has a half note B-flat37 and a quarter note C38. The hundred-thirty-fourth measure is a half note D38 and a quarter note E38. The hundred-thirty-fifth measure has a half note F38 and a quarter note G38. The hundred-thirty-sixth measure is a half note A38 and a quarter note B-flat38. The hundred-thirty-seventh measure has a half note C39 and a quarter note D39. The hundred-thirty-eighth measure is a half note E39 and a quarter note F39. The hundred-thirty-ninth measure contains a half note G39 and a quarter note A39. The hundred-fortieth measure has a half note B-flat39 and a quarter note C40. The hundred-forty-first measure is a half note D40 and a quarter note E40. The hundred-forty-second measure has a half note F40 and a quarter note G40. The hundred-forty-third measure is a half note A40 and a quarter note B-flat40. The hundred-forty-fourth measure has a half note C41 and a quarter note D41. The hundred-forty-fifth measure is a half note E41 and a quarter note F41. The hundred-forty-sixth measure contains a half note G41 and a quarter note A41. The hundred-forty-seventh measure has a half note B-flat41 and a quarter note C42. The hundred-forty-eighth measure is a half note D42 and a quarter note E42. The hundred-forty-ninth measure has a half note F42 and a quarter note G42. The hundred-fiftieth measure is a half note A42 and a quarter note B-flat42. The hundred-fifty-first measure has a half note C43 and a quarter note D43. The hundred-fifty-second measure is a half note E43 and a quarter note F43. The hundred-fifty-third measure contains a half note G43 and a quarter note A43. The hundred-fifty-fourth measure has a half note B-flat43 and a quarter note C44. The hundred-fifty-fifth measure is a half note D44 and a quarter note E44. The hundred-fifty-sixth measure has a half note F44 and a quarter note G44. The hundred-fifty-seventh measure is a half note A44 and a quarter note B-flat44. The hundred-fifty-eighth measure has a half note C45 and a quarter note D45. The hundred-fifty-ninth measure is a half note E45 and a quarter note F45. The hundred-sixtieth measure contains a half note G45 and a quarter note A45. The hundred-sixty-first measure has a half note B-flat45 and a quarter note C46. The hundred-sixty-second measure is a half note D46 and a quarter note E46. The hundred-sixty-third measure has a half note F46 and a quarter note G46. The hundred-sixty-fourth measure is a half note A46 and a quarter note B-flat46. The hundred-sixty-fifth measure has a half note C47 and a quarter note D47. The hundred-sixty-sixth measure is a half note E47 and a quarter note F47. The hundred-sixty-seventh measure contains a half note G47 and a quarter note A47. The hundred-sixty-eighth measure has a half note B-flat47 and a quarter note C48. The hundred-sixty-ninth measure is a half note D48 and a quarter note E48. The hundred-seventieth measure has a half note F48 and a quarter note G48. The hundred-seventy-first measure is a half note A48 and a quarter note B-flat48. The hundred-seventy-second measure has a half note C49 and a quarter note D49. The hundred-seventy-third measure is a half note E49 and a quarter note F49. The hundred-seventy-fourth measure contains a half note G49 and a quarter note A49. The hundred-seventy-fifth measure has a half note B-flat49 and a quarter note C50. The hundred-seventy-sixth measure is a half note D50 and a quarter note E50. The hundred-seventy-seventh measure has a half note F50 and a quarter note G50. The hundred-seventy-eighth measure is a half note A50 and a quarter note B-flat50. The hundred-seventy-ninth measure has a half note C51 and a quarter note D51. The hundred-eightieth measure is a half note E51 and a quarter note F51. The hundred-eighty-first measure contains a half note G51 and a quarter note A51. The hundred-eighty-second measure has a half note B-flat51 and a quarter note C52. The hundred-eighty-third measure is a half note D52 and a quarter note E52. The hundred-eighty-fourth measure has a half note F52 and a quarter note G52. The hundred-eighty-fifth measure is a half note A52 and a quarter note B-flat52. The hundred-eighty-sixth measure has a half note C53 and a quarter note D53. The hundred-eighty-seventh measure is a half note E53 and a quarter note F53. The hundred-eighty-eighth measure contains a half note G53 and a quarter note A53. The hundred-eighty-ninth measure has a half note B-flat53 and a quarter note C54. The hundred-ninetyth measure is a half note D54 and a quarter note E54. The hundred-ninety-first measure has a half note F54 and a quarter note G54. The hundred-ninety-second measure is a half note A54 and a quarter note B-flat54. The hundred-ninety-third measure has a half note C55 and a quarter note D55. The hundred-ninety-fourth measure is a half note E55 and a quarter note F55. The hundred-ninety-fifth measure contains a half note G55 and a quarter note A55. The hundred-ninety-sixth measure has a half note B-flat55 and a quarter note C56. The hundred-ninety-seventh measure is a half note D56 and a quarter note E56. The hundred-ninety-eighth measure has a half note F56 and a quarter note G56. The hundred-ninety-ninth measure is a half note A56 and a quarter note B-flat56. The two-hundredth measure has a half note C57 and a quarter note D57. The two-hundred-first measure is a half note E57 and a quarter note F57. The two-hundred-second measure contains a half note G57 and a quarter note A57. The two-hundred-third measure has a half note B-flat57 and a quarter note C58. The two-hundred-fourth measure is a half note D58 and a quarter note E58. The two-hundred-fifth measure has a half note F

12

22

22 

28

28

28

32

32



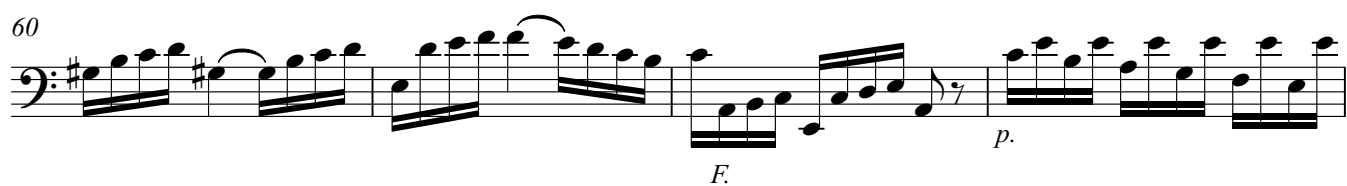
*p.*

35

Musical notation for the bass line of 'The Bird Song'. It features a single staff with a bass clef. The melody consists of eighth notes, with some notes beamed together in groups of four. The notes are mostly on the lower half of the staff, with some higher notes in the final measures.

37

The bass line of 'The Rose Tree' is written on a single staff in bass clef. It begins with a treble clef and a key signature of one flat (B-flat). The melody consists of a series of eighth notes, starting on a G4 (G above middle C) and descending stepwise to a D3 (D below middle C). The notes are: G4, F4, E4, D4, C4, B3, A3, G3, F3, E3, D3. The melody is followed by a whole rest and a final whole note D3.



84

84

[illegible]

93

97



97

101



Musical notation for measure 101, bass clef. The measure contains a complex rhythmic pattern with many beamed notes, primarily eighth and sixteenth notes, and rests.

104

Example 104 is a bass line in 3/4 time. The melody starts on G2, moves to A2, then B2, and continues with eighth and sixteenth notes, ending on G2.

108

111

The musical score for the bass line of 'The Rose Tree' is written on a single staff. It begins with a treble clef and a key signature of one flat (B-flat). The melody starts with a half note G2, followed by a quarter note A2, and then a half note B-flat2. A slur covers the next four notes: G2, A2, B-flat2, and A2. This is followed by a quarter rest, then a half note G2, and a quarter note F2. A slur covers the next four notes: E2, D2, C2, and B-flat2. The piece ends with a final half note B-flat2.

114

t. t.

F.

116

Measure 116 (bass clef) contains a descending eighth-note scale (G4, F4, E4, D4) followed by a half-note chord (D4, F#4).