

Georg Philipp Telemann
(1681-1767)

Sonata B-dur

Solo 5^{to} “in Essercizii Musici” (1739)

Oboe e Basso continuo

Georg Philipp Telemann

Sonata B-dur

Solo 5^{to} “in Essercizii Musici” (1739)

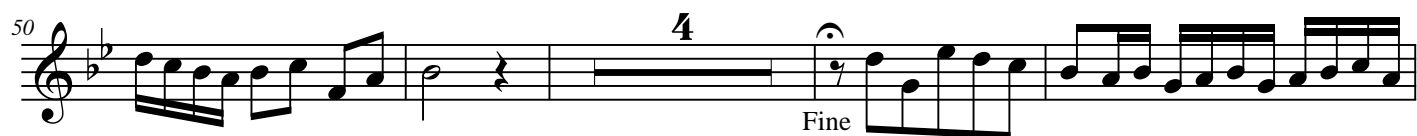
OBOE

Adagio

Adagio section, measures 1-22. The music is written in treble clef, key of B-flat major (two flats), and common time (C). The tempo is marked Adagio. The notation includes various rhythmic values, including eighth and sixteenth notes, and rests. The piece concludes with a double bar line at measure 22.

Allegro

Allegro section, measures 1-17. The music is written in treble clef, key of B-flat major (two flats), and 3/4 time. The tempo is marked Allegro. The notation includes various rhythmic values, including eighth and sixteenth notes, and rests. The piece concludes with a double bar line at measure 17.



D.C. al Fine



Vivace

A musical score for a piece titled "Vivace". The score is written on a single staff in treble clef, with a key signature of two flats (B-flat and E-flat) and a common time signature (C). The tempo is indicated by the word "Vivace" at the top left. The score consists of 35 measures, grouped into 11 lines of four measures each. The notation includes various rhythmic values, including eighth and sixteenth notes, and rests. There are several dynamic markings, including accents (+) and a crescendo hairpin. The piece concludes with a double bar line and repeat dots at the end of the 35th measure.

4

7

10

13

16

19

22

26

29

32

35

Georg Philipp Telemann

Sonata B-dur

Solo 5^{to} “in Essercizii Musici” (1739)

BASSO CONTINUO

Adagio

Adagio section, measures 1-21. The music is in bass clef, 2/4 time, and B-flat major. Fingerings are indicated by numbers 1-5 below the notes. Measure numbers 4, 7, 10, 13, 17, and 21 are marked at the start of their respective staves.

Measures 1-21: The Adagio section consists of six staves of music. The first staff (measures 1-3) has fingerings 6, 6, 6, 6, 6, 6. The second staff (measures 4-6) has fingerings 6, 6, 6, 6, 6, 6. The third staff (measures 7-9) has fingerings 6, 6, 6, 6, 6, 6. The fourth staff (measures 10-12) has fingerings 6, 6, 6, 6, 6, 6. The fifth staff (measures 13-15) has fingerings 6, 6, 6, 6, 6, 6. The sixth staff (measures 16-18) has fingerings 6, 6, 6, 6, 6, 6. The seventh staff (measures 19-21) has fingerings 6, 6, 6, 6, 6, 6.

Allegro

Allegro section, measures 1-18. The music is in bass clef, 3/4 time, and B-flat major. Fingerings are indicated by numbers 1-5 below the notes. Measure numbers 7, 12, and 18 are marked at the start of their respective staves.

Measures 1-18: The Allegro section consists of four staves of music. The first staff (measures 1-3) has fingerings 6, 6, 6, 6, 6, 6. The second staff (measures 4-6) has fingerings 6, 6, 6, 6, 6, 6. The third staff (measures 7-9) has fingerings 6, 6, 6, 6, 6, 6. The fourth staff (measures 10-12) has fingerings 6, 6, 6, 6, 6, 6. The fifth staff (measures 13-15) has fingerings 6, 6, 6, 6, 6, 6. The sixth staff (measures 16-18) has fingerings 6, 6, 6, 6, 6, 6.

[illegible]

Cantabile

[illegible]

Vivace

6 5 6 6 6 5 — 6 6 6 5 6 6

6 — — 6 — — 6 ♭ — ♭ — 6 — 6 — ♭ 6

— 6 ♭ 5 3 — 6 ♭ ♭ 6 9 8 7 6

6 — 7 — ♭ 6 6 ♭ 6 ♭ 6 — 6 — 6 ♭

6 6 ♭ 6 6 5 # 6 6 6 ♭ ♭

6 6 ♭ ♭ 6 ♭ ♭ 4 ♭ 6 — 2

4 6 — — 6 6 6 — 6 6 6 — 6 6 5 — 6 6

6 6 5 6 6 6 5 6 6 6 5 6 6

— 6 6 4 6 6 4 6 5 6 6

