

Piano Sonata No. 4 in E-Flat Major, "Grand"

Contrabass

1. Allegro molto e con brio

Ludwig van Beethoven
Joshua Choe

Allegro molto e con brio

p *sf* *f*

17 *ff* *ff*

31 *ff* *sf* *p* *p*

60 *p*

70 *cresc.*

78 *ff* *pp*

86 *f*

94 *sf* *sf* *sf* *p cresc.* *ff*

101



108



117



126



133



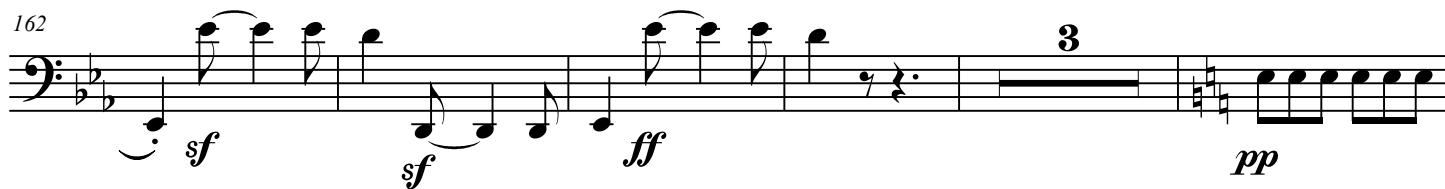
140



156



162



170



ff

178



sffz *p* *p*

186



ff *sffz*

193



p *cresc.*

205



f *ff*

214



p *p*

244



p *p*

254



cresc. *ff*

261 **10**

276

283

291

300

309

315

321 **10**

pp *f* *sf* *sf*

sf *p cresc.* *ff* *ff* *sf*

sf *sf* *p cresc.* *f cresc.* *ff*

sf *sf* *sf* *sf* *sf*

sf *sf* *sf* *sf* *sf* *sf*

sf *sf* *sf* *sf* *ff*

sffz *sffz* *sffz* *p*

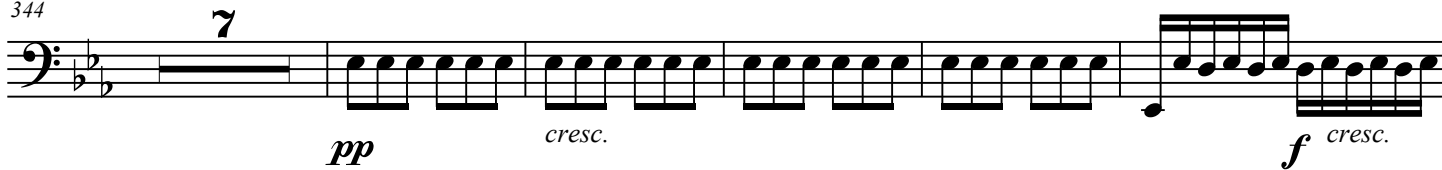
p cresc. *f*

Detailed description: This image shows a page of musical notation for the Piano Sonata No. 4 in E-Flat Major, 'Grand'. The page contains eight staves of music, each starting with a measure number. The first staff (261) has a '10' above it, indicating a ten-measure phrase. The notation includes various dynamic markings such as *pp*, *f*, *sf*, *ff*, *p cresc.*, *f cresc.*, *sffz*, and *p*. The music is written in bass clef with a key signature of two flats (B-flat and E-flat). The notation includes eighth notes, quarter notes, and half notes, with some measures containing slurs or ties. The page number '4' is in the top left corner, and the title 'Piano Sonata No. 4 in E-Flat Major, "Grand"' is at the top center.

336



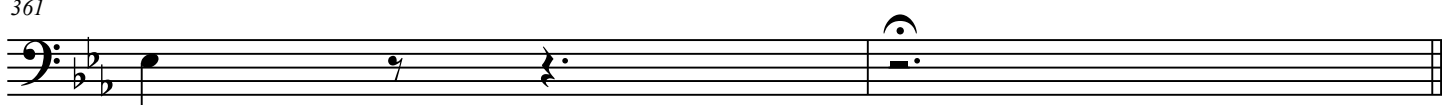
344



356



361



Piano Sonata No. 4 in E-Flat Major, "Grand"

Contrabass

2. Largo, con gran espressione

Ludwig van Beethoven
Joshua Choe

Largo, con gran espressione

8

16

22

28

32

37

50

p *sf* *p*

cresc. *pcresc.* *pcresc.* *f* *pp*

mf *pp* *ff*

pp *pp* *pp*

sf *p* *f*

pp *f* *sf*

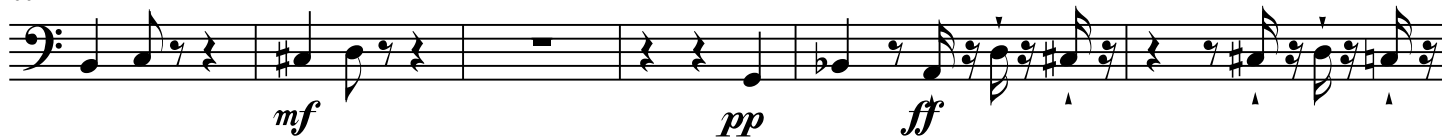
f *p* *sf* *pp* *p*

pp *sf* *pp*

58



66



72



79



89



Piano Sonata No. 4 in E-Flat Major, "Grand"

Contrabass

3. Allegro

Ludwig van Beethoven
Joshua Choe

Allegro

10 6

p *sf* *f*

21 28

sf *pp*

55 24

ff *sf* *sf* *sf* *sf* *sf*

85

f

95 1. 2. *Fine* **Minore**

pp 3 3 3 3 3 3

99

ffpp 3 3 3 3 3 3 3 3 3 3 3 3 *ffpp* 3 3 3

104

3 3 3 3 3 3 3 3 3 3 3 3 *cresc.* *p* *dim.*

109

3 3 3 3 3 3 3 3 3 3 3 3 *pp* *p* 3 3 3

114

ff p

118

ff p cresc.

123

f p ff p

128

ff p

133

sf sf cresc. ff

138

pp

143

ppp

149

2

D.C. al Fine

Piano Sonata No. 4 in E-Flat Major, "Grand"

Contrabass

4. Poco allegretto e grazioso

Ludwig van Beethoven

Joshua Choe

6

p *cresc.* *sf*

13

p *f*

20

p *f*

27

fp

33

7

mf *f* *ff*

47

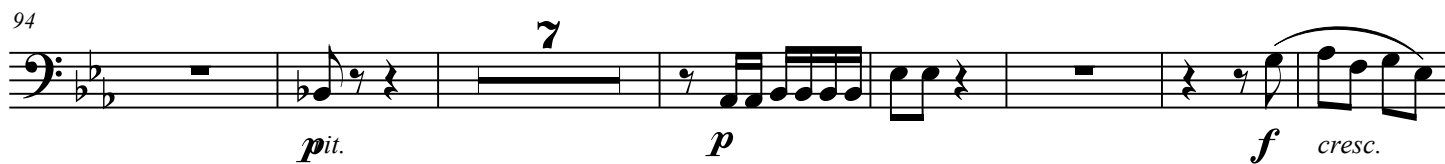
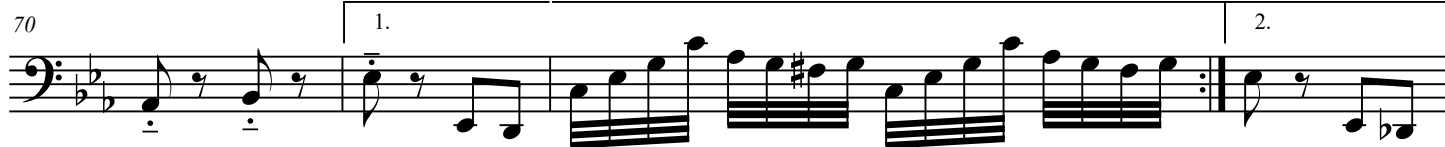
8

p *p* *cresc.* *p*

63

sf *ff*

66



116



122



129



143



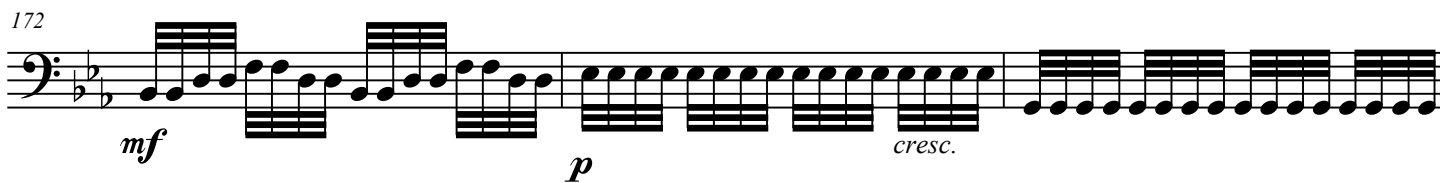
158



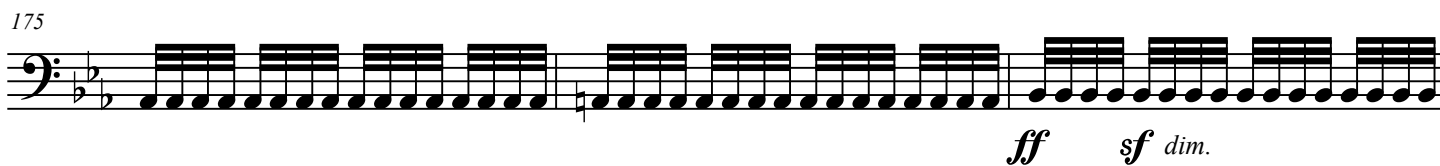
169



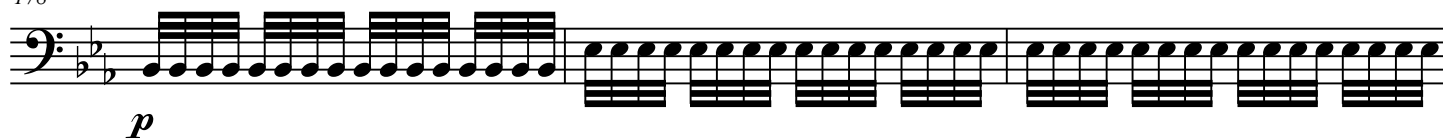
172



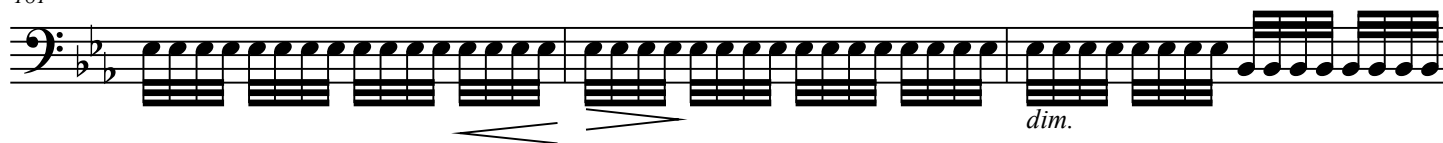
175



178



181



184

