

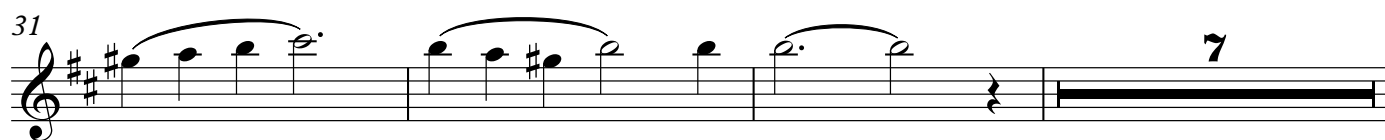
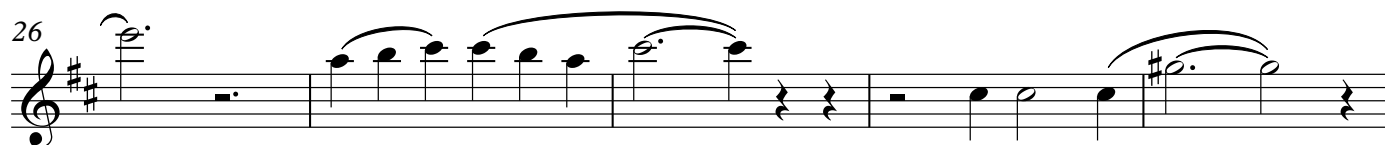
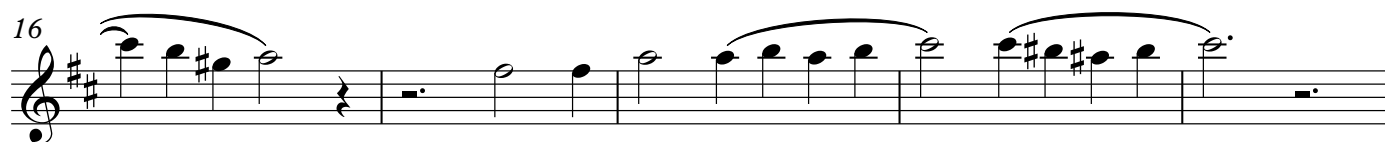
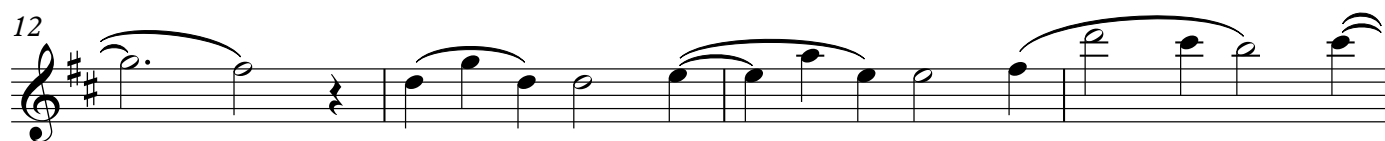
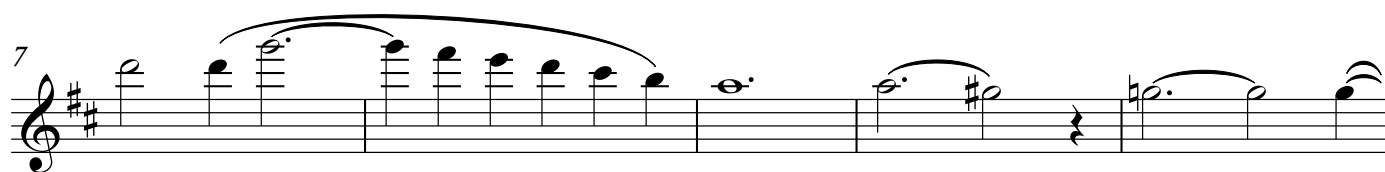
Flute B1

# Ave Maria

for double choir

Holst

Adagio [ma non troppo]  $\text{♩} = 48$



41

46

51

56

60

Detailed description: This image shows five staves of musical notation for a flute part, labeled with measure numbers 41, 46, 51, 56, and 60. The key signature is one sharp (F#). The notation includes various musical symbols such as eighth notes, quarter notes, half notes, and rests, often grouped by beams and slurs. Measure 41 starts with a half note F#4, followed by eighth notes G#4, A4, B4, C5, D5, E5, and F#5. Measure 46 features a half note F#4, followed by eighth notes G#4, A4, B4, C5, D5, E5, and F#5. Measure 51 begins with a half note F#4, followed by eighth notes G#4, A4, B4, C5, D5, E5, and F#5. Measure 56 starts with a half note F#4, followed by eighth notes G#4, A4, B4, C5, D5, E5, and F#5. Measure 60 begins with a half note F#4, followed by eighth notes G#4, A4, B4, C5, D5, E5, and F#5. The notation is written on a five-line staff with a treble clef.