

Gilly's Reason.

Song.

by

W. P. Gilbert

Composed expressly for

& sung by

Madame Emmen - Sherrington

by

James L. Molloy.

Wednesday 15th

Mr. Sharp

Propose of these two songs

Must go in to night to Mr. Cherry

They are much wanted.

This song particularly wanted to be reviewed

W. S. Gilbert

Eily's Reason!

J. L. Molloy

Handwritten musical notation for the piano introduction, consisting of two staves in C major and common time. The melody is in the right hand, and the accompaniment is in the left hand.

Handwritten musical notation for the first vocal line, with lyrics: "All the girls I ever see / Phebe dear you're angry now / Lick and cry and there's a cloud up -".

Handwritten musical notation for the second vocal line, with lyrics: "on yr brow, would you have me / you would have me / shall the share / so & tell".

Handwritten musical notation for the third vocal line, with lyrics: "of the how den they must hear / If I go / even one / love you well / Pure they see your".

Handwritten musical notation for the fourth vocal line, with lyrics: "heart to tell every one I / hope you will / bright-blue eyes / Pure they know you're / brave & wise".



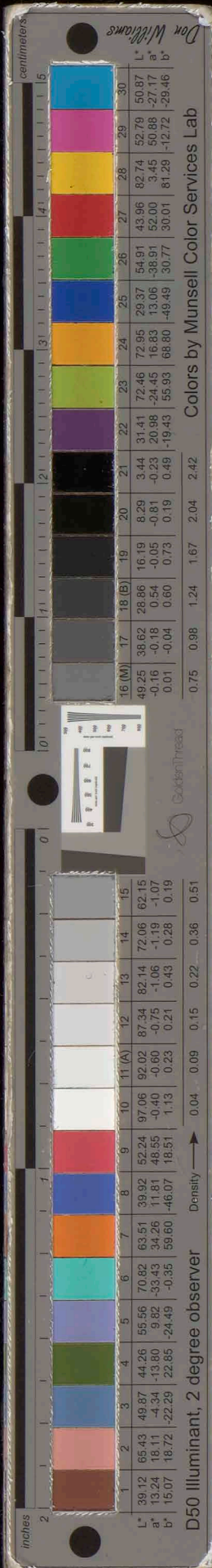
Handwritten musical score for the first system. It consists of three staves: a vocal line in G major, a piano accompaniment in G major, and a bass line in G major. The lyrics are: "Then my love is pure and true / What is left to / Then they know how / Eily will / What has Eily".

Handwritten musical score for the second system. It consists of three staves. The lyrics are: "left to tell / Phelim dear yours / angry now". There are performance markings: "colla voce" and "a tempo".

Handwritten musical score for the third system. It consists of three staves. The lyrics are: "There is a cloud up - / on your brow / you would have me". There is a tempo marking "2/3 A".

Handwritten musical score for the fourth system. It consists of three staves. The lyrics are: "So + tell / 2 rivers on / love you will". There is a tempo marking "2nd music".

Handwritten musical score for the fifth system. It consists of three staves. The lyrics are: "Long the way". There is a tempo marking "3".



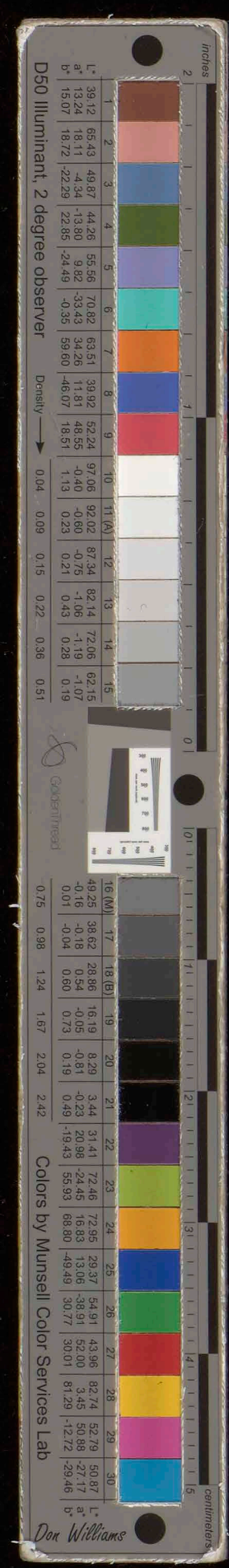
~~loved the oak yet the ivy never chokes~~

~~Quite content to cling & cling & breathe its love in~~

~~whispering Pure it needed not to tell~~

~~that it loved the That it loved the oak so well~~

~~All the trees that round it grew wished they had been~~



2nd verse

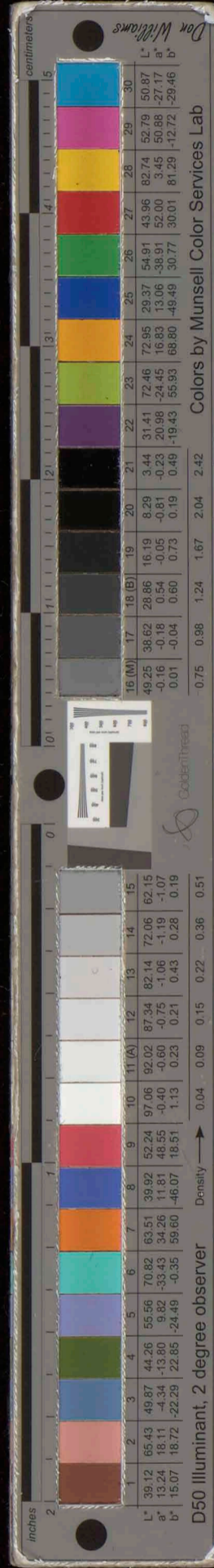
5
H P 4

Long the ivy loved the oak yet the ivy never spoke

Quite content to cling and cling and breathe its love in

whispering Sure it needed not to tell That it loved the

Solemn.
oak so well All the trees that round it grew Wished they had been



6

2

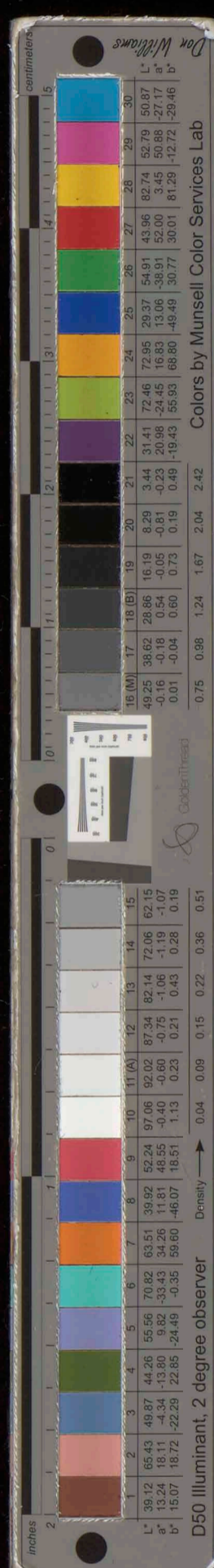
by too

Phelim Don't be angry now

rall

3rd verse the accompaniment like that of the first verse

all the girls I ever saw



rall *a tempo*

ing too Phelin dear you any now

There is a cloud up - on your brow you would have me

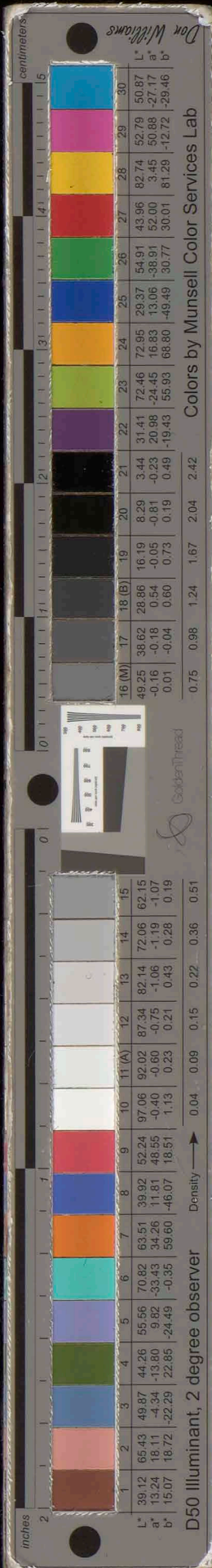
So & look every one I love you well

3rd verse. Accompaniment as on the first page

all the girls

rall

ever see Pigh & cry & every me



P

would you have me swell the strain

of the burden they must bear if I so a - bout to tell

every one I love you well that my love is

ritardando
 pure & true what is left to tell to you

a tempo

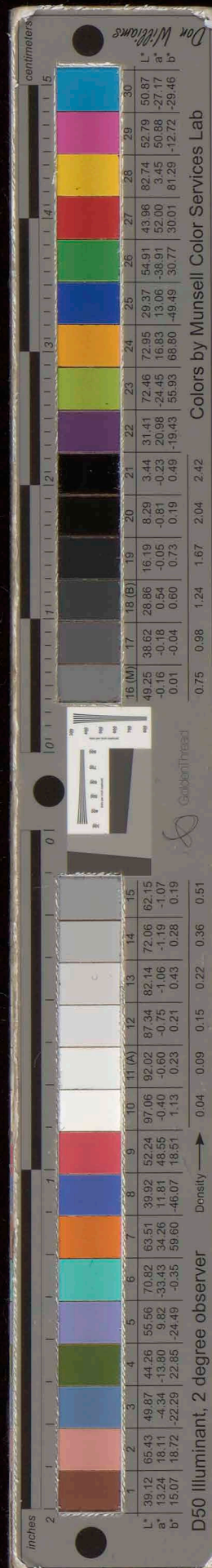
Phelim dont be angry now there a cloud up

(6)

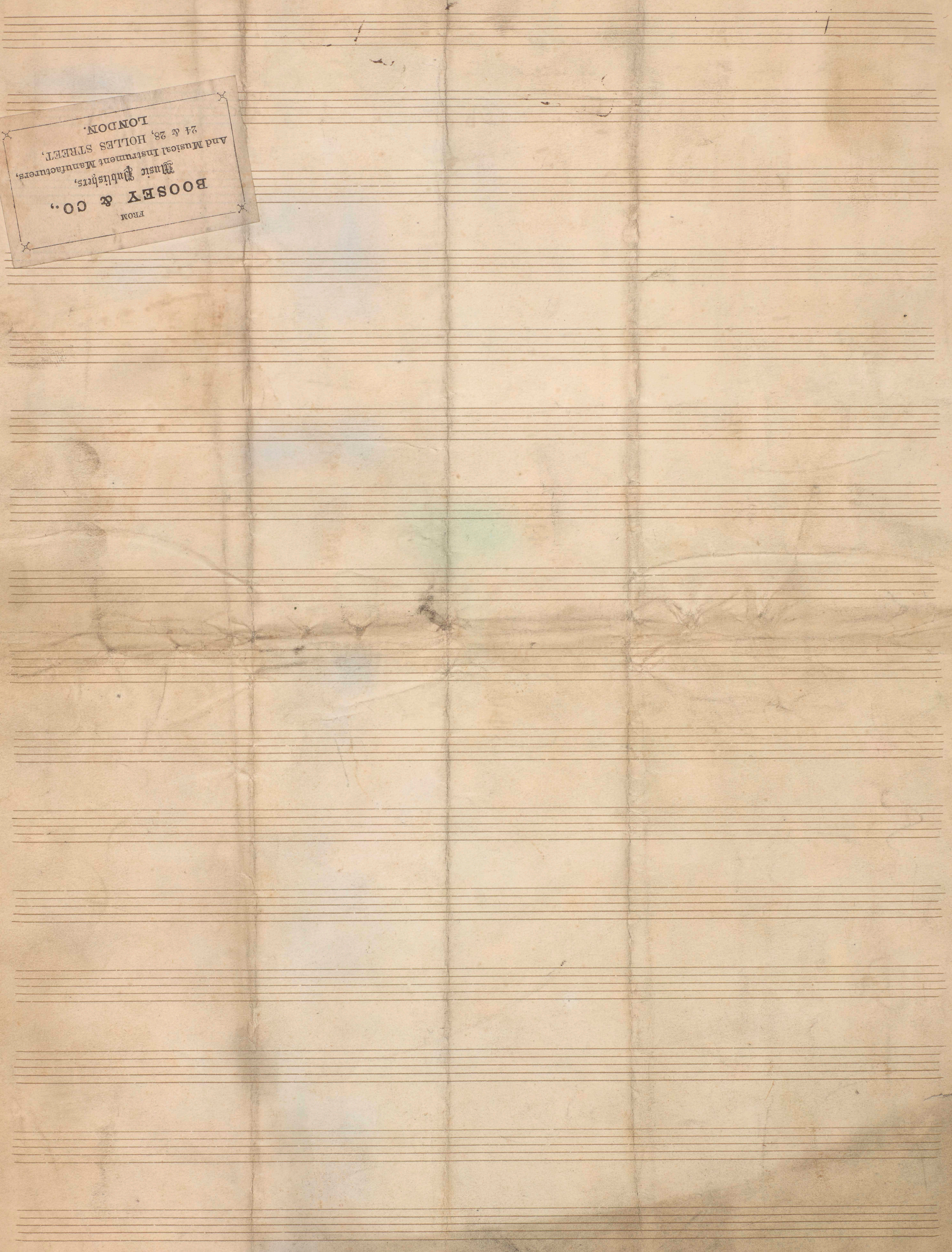
Handwritten musical notation on a single staff. The lyrics are: "on your brow where's the need to go + tell". The notation includes a treble clef, a key signature of one flat (Bb), and a common time signature (C). The melody consists of quarter and eighth notes.

Handwritten musical notation on a single staff. The lyrics are: "every one love you well". The notation includes a treble clef, a key signature of one flat (Bb), and a common time signature (C). The melody consists of quarter and eighth notes. There are handwritten annotations: "Pianissimo" above the staff, "Colla voce" below the staff, and "p" below the staff. A large blue arrow points from the first measure to the second measure.

Handwritten musical notation on a single staff. The notation includes a treble clef, a key signature of one flat (Bb), and a common time signature (C). The melody consists of quarter and eighth notes. There are handwritten annotations: "p" below the staff, "8/19" below the staff, and a large blue arrow pointing from the first measure to the second measure.



FROM
BOOSEY & CO.,
Music Publishers,
And Musical Instrument Manufacturers,
24 & 28, HOLLES STREET,
LONDON.



111702

