

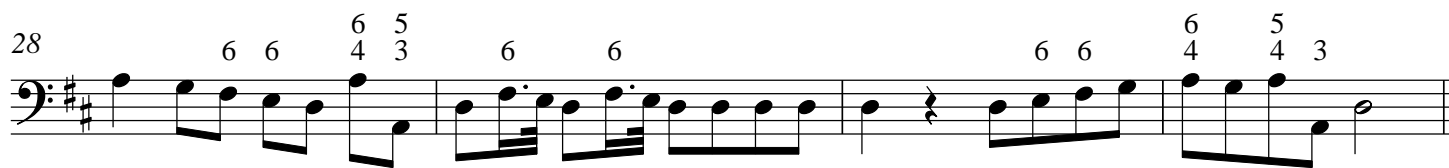
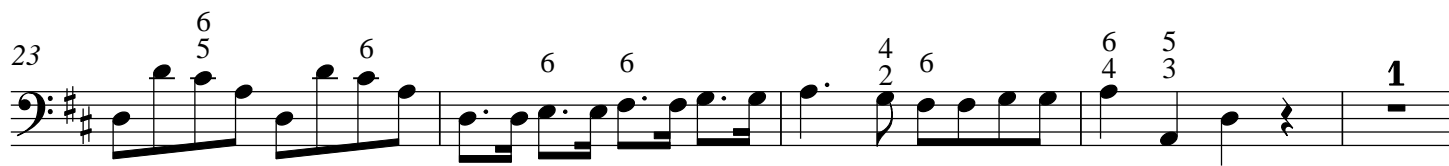
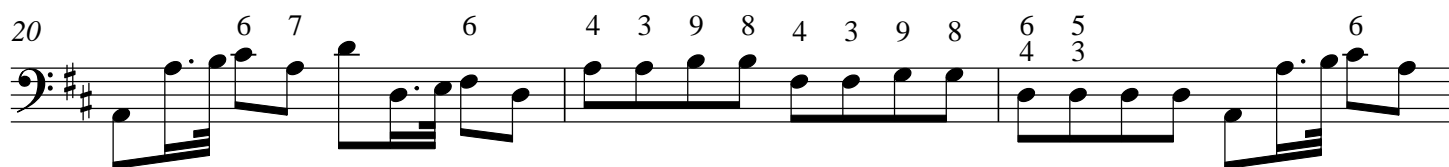
Basso Ripieno.

1

CONCERTO VI

Largo

Avison, after Scarlatti



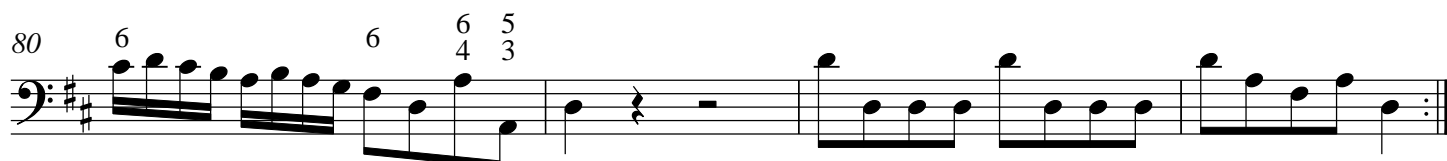
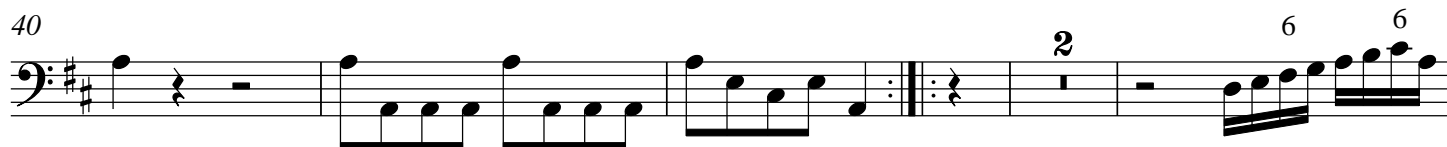
Pianis.

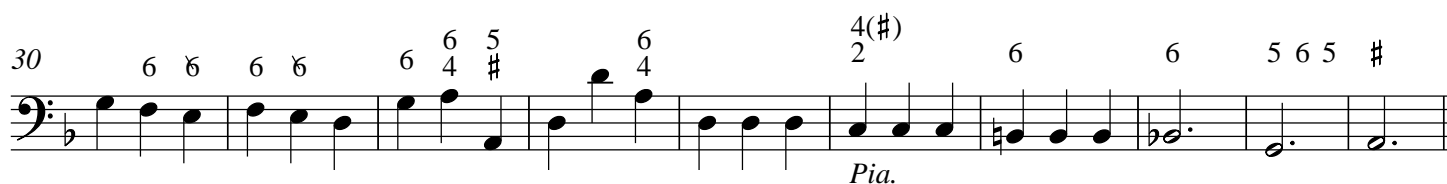
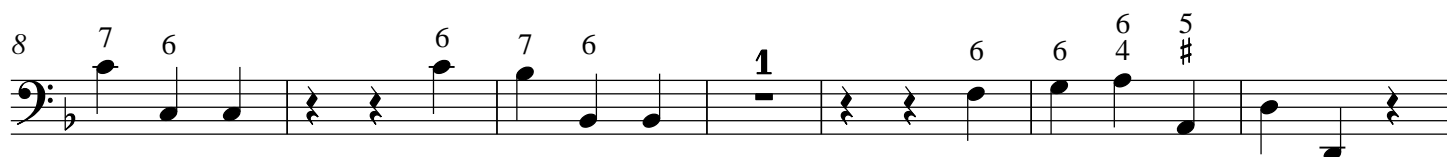
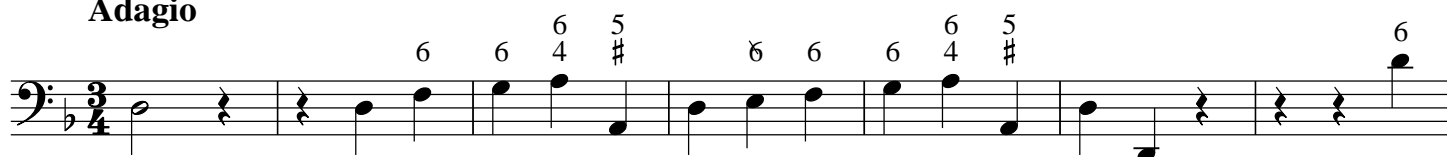
For.

2

37

Measure 37 of the piece 'The Rose Tree' in G major. The notation is on a bass staff with a key signature of one sharp (F#). The measure contains a sequence of eighth and sixteenth notes, with a triplet of eighth notes marked with a '3' and a '6' above it. The measure ends with a double bar line.



Adagio**Vivacemente**

