

Sinfonia No.6

Fa Maggiore
K.43

Wolfgang Amadeus Mozart

f

8

15

p

25

fp fp fp fp fp

38

49

p f

60

p f p f

70

p

79

fp fp fp fp fp f

92

Sinfonia No.6

Fa Maggiore

Wolfgang Amadeus

K.43

Andante

9

15

22

30

37

45

53

61

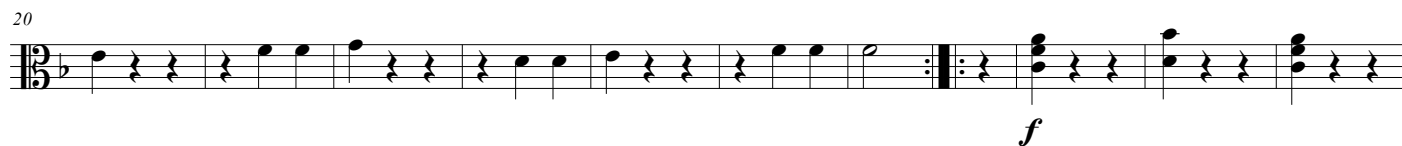
mf

©

Sinfonia No.6

Fa Maggiore
K.43

Wolfgang Amadeus Mozart



Sinfonia No.6

Fa Maggiore

Wolfgang Amadeus Mozart

K.43

Allegro

Musical score for "The Swan" by Camille Saint-Saëns, featuring a single melodic line in bass clef. The score is divided into measures, with measure numbers 11, 26, 37, 48, 59, 73, 84, 94, and 106 indicated at the beginning of their respective staves. The key signature is one flat (B-flat), and the time signature is 6/8. The score includes various dynamic markings such as *f* (forte), *p* (piano), *fp* (fortissimo piano), and *f* (forte). It also features articulations like slurs, ties, and a 4-measure rest. The melody is characterized by its graceful, flowing lines, typical of the piece's depiction of a swan.