

TROISIÈME ŒUVRE

Contenant une Suite a deux Flûtes-Traversieres seules,

Et une autre Suite

Dessus et Basse,

Pour les Hautbois, Flûtes, Violons, etc.

Avec une Réduction de la Chasse

PAR MR. P. PHILIDOR

Paris, 1718

Pierre Danican Philidor

Douxième Suite

Prelude
Tres lentement

The first system of the 'Douxième Suite' consists of two staves. The treble staff is in G major (one sharp) and common time, starting with a half rest followed by a quarter note G. The bass staff is in D major (two sharps) and common time, starting with a half rest followed by a quarter note D. The music is marked 'Prelude' and 'Tres lentement'. The system ends with a measure containing a 6/4 time signature, a sharp sign, and a 'x6' multiplier.

The second system of the 'Douxième Suite' consists of two staves. The treble staff continues the melody with various ornaments and a 3-measure rest. The bass staff provides a harmonic accompaniment. The system ends with a measure containing a 9-measure rest, a 5-measure rest, a 6-measure rest, and a sharp sign.

The third system of the 'Douxième Suite' consists of two staves. The treble staff continues the melody with various ornaments and a 5-measure rest. The bass staff provides a harmonic accompaniment. The system ends with a measure containing a 5-measure rest, a 6-measure rest, a 6-measure rest, and a 5-measure rest.

The fourth system of the 'Douxième Suite' consists of two staves. The treble staff continues the melody with various ornaments and a 6-measure rest. The bass staff provides a harmonic accompaniment. The system ends with a measure containing a 6-measure rest, a 5-measure rest, a 4-measure rest, a sharp sign, a 6-measure rest, a 5-measure rest, a 6-measure rest, and a 5-measure rest.

*flattement

11

13

16

Allemande

Pas trop viste

Allemande

Pas trop vite

x6 6 6 5 # — 6 9 9 # 5

11

Λ +

7— 6 x4 6 7 5 7

b

#

14

6 6 7 7
x4

9 7 6

6 6 5 4

17

6

6 6 5

20

4 2 5

6

5

23

5

6 5

6

Sarabande
Tres proprement

Measures 1-5 of the Sarabande. The treble staff features a melody with slurs and accents. The bass staff provides a rhythmic accompaniment with fingerings 5, 6, 6, 5, 4, and a sharp sign.

Measures 6-10 of the Sarabande. Measure 6 includes first and second endings. Measure 7 has a trill. Measures 8-10 continue the melody with slurs and accents. The bass staff includes a sixteenth-note pattern in measure 10 marked 'x6' and a slur.

Measures 11-15 of the Sarabande. Measure 11 starts with a trill. Measures 12-15 include various articulations and fingerings. The bass staff has fingerings 6, x4, 6, 6, 6, 5, 4, and a sharp sign.

La Parisienne
Tres legerement

Measures 1-6 of La Parisienne. The treble staff has a lively melody with slurs and accents. The bass staff has a rhythmic accompaniment with fingerings 6, 7, b7, 6, 5, 6, a sharp sign, 6, x4, and x6.

Measures 7-12 of La Parisienne. Measure 7 includes a first and second ending. Measures 8-12 continue the melody with slurs and accents. The bass staff includes a sixteenth-note pattern in measure 12 marked '4' and 'fin' markings.

10

6 6 6 5 6 6

15

5 6 6 6 6 7 6 5 6 #

21

6 x6 # 5 5 5 4 #

26

6 x4 6 6 6 6 6 # 6 5 6 x6

32

6 4 # — 6 x4 6 4 # %

Chaconne

Piqué

7

13

19

25

fort

32

4 # 5 6 x4 6 5 6 5 5

38

6 x4 6 5 4 # 6 5

44

5 6 6 6 x6 5 4 # fort 6 x6 6 6

51

6 6 4 # 6 x6 6 6 6 6 4 #

57

6 6 6 6 4 # 6

62

6 5 6 7 5 4 # 6 6 5 6

68

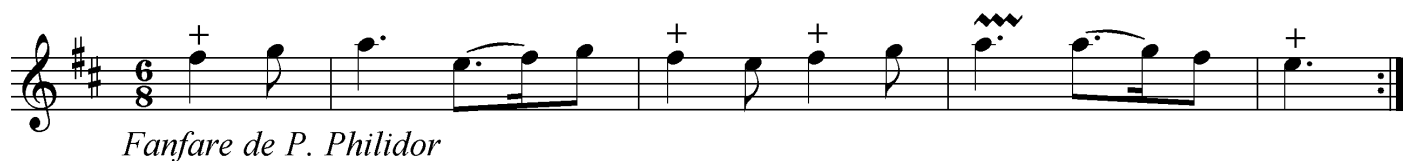
7 5 4 # 6

74

7 6 7 6 x6

80

5 9 6 x6 4 #



Petite Reprise pour finir chaque fanfare de la Chasse