

Timpani

Concerto stilizzato

paraphrase on a motif by Brahms

PARTE PRIMA: "CADENZA"

Adagio $\text{♩} = 60$ Cadenza Tamás Beischer-Matyó

22 25 30

ppp *ff*

poco rall. - - Poco sostenuto

PARTE SECONDA: "FORMA-SONATA"

Allegro con brio $\text{♩} = 180$ ($\text{♩} = 60$)

35 40 55 60 65

ff *ff* *pp*

Hn., Tba. *mf*

f *f* *ff*

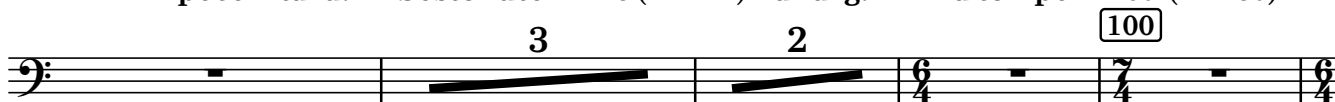
f *p* *f* *p*

Copyright Tamás Beischer-Matyó, 1996

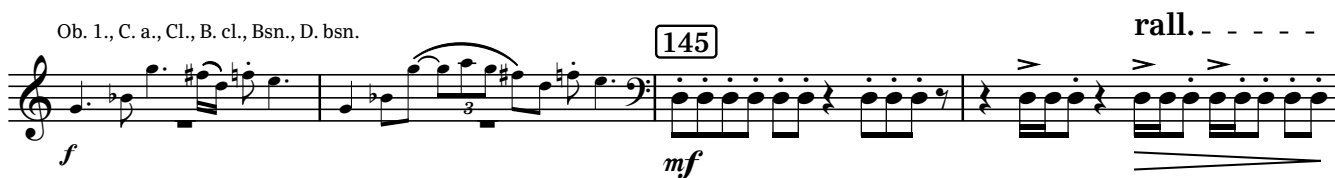
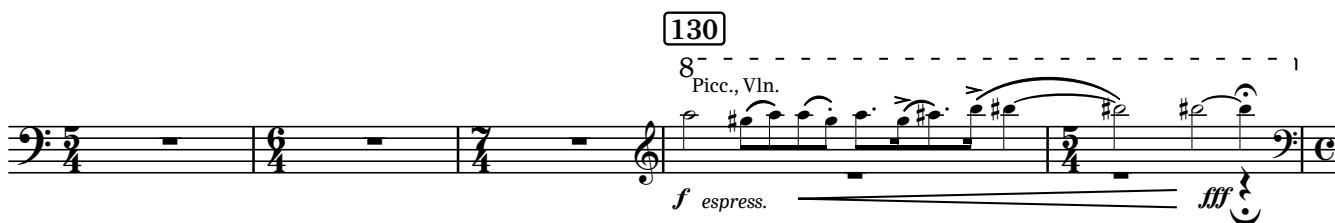
www.beischermatyó.hu/concerto_stilizzato

This work is licensed under the Creative Commons Attribution-NonCommercial-NoDerivatives 4.0 International License.
To view a copy of this license, visit www.creativecommons.org/licenses/by-nc-nd/4.0/

poco ritard. Sostenuto $\text{♩} = 48$ ($\text{♩} = 144$) allarg. a tempo $\text{♩} = 60$ ($\text{♩} = 180$)



poco ritard. a tempo poco ritard. a tempo



Meno allegro $\text{♩} = 120$

(senza rall.) accel. al



PARTE TERZA: "LIED"

subito Adagio molto $\text{♩} = 60$ ($\text{♩} = \text{♩}$) allargando

170 15 185 6 2 10 2

a tempo

205 3 210 2 4

molto rall.

più adagio e molto flessibile $\text{♩} = 48$ poco a poco allarg. - - - - -

220

PARTE QUARTA: "RONDÒ"

a tempo ($\text{♩} = 48$) rall.Allegro vivace $\text{♩} = 180$ ($\text{♩} = 90$)

wood stick

225

B. cl.

ff

230

ff *f*

235

poco rall. a tempo 6 rall.

a tempo

245 timpani mallet

250

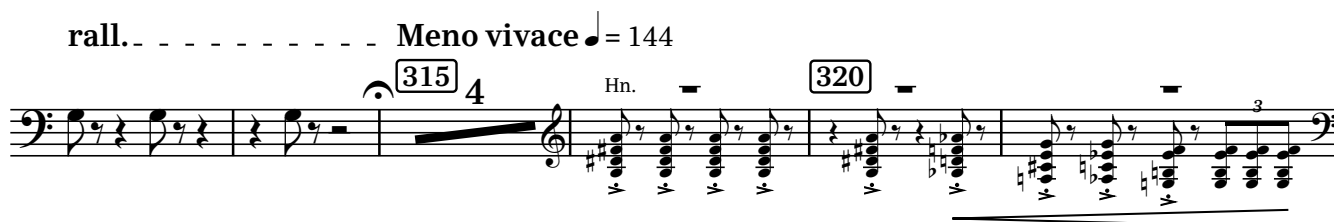
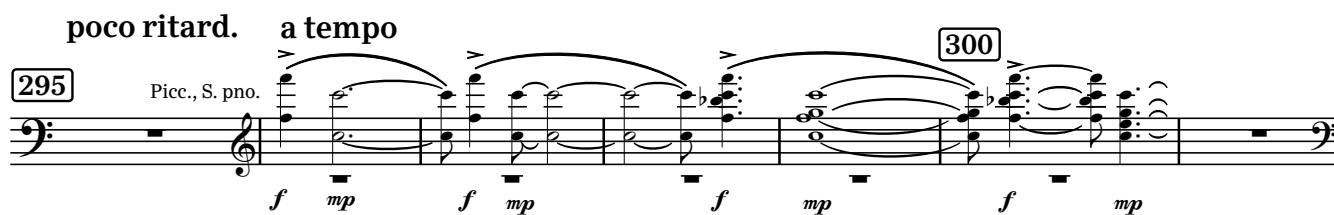
f *f*

255

2 9

270

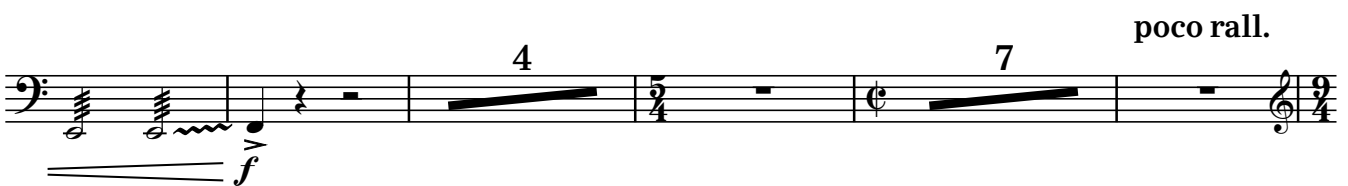
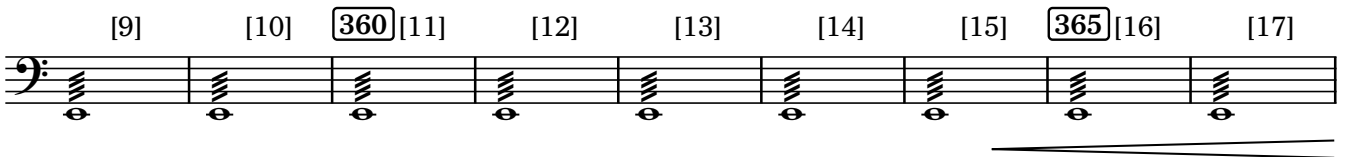
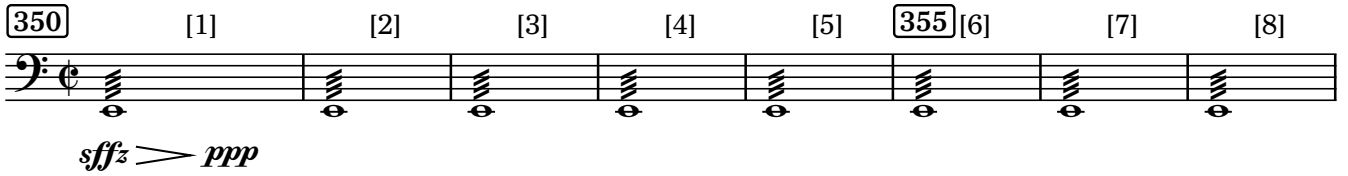
2 2 275 8



rall. - - -

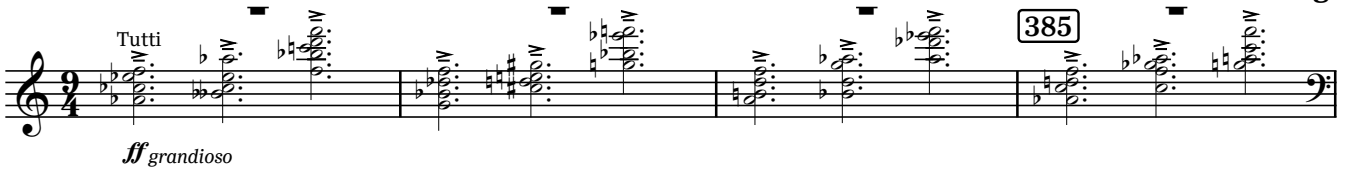


Allegro vivace ♩ = 180



Sostenuto ♩ = 48 (♩ = 144)

allarg.



(allarg.) a tempo ♩ = 180

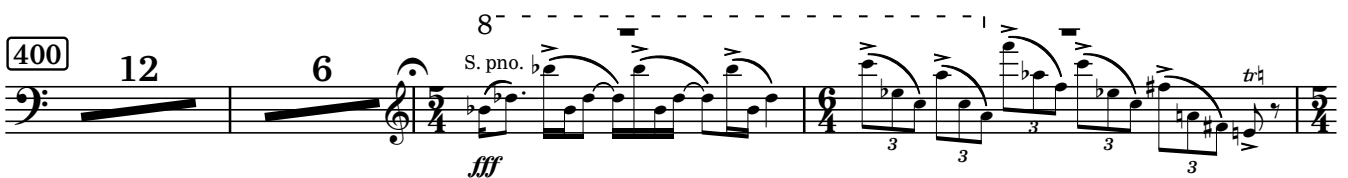
rall. molto - - -



PARTE QUINTA: "CONCLUSIONE"

a tempo ♩ = 180

[395]



420

8

ff

rall.

Poco sostenuto

a tempo, ma poco agitato

2

ff

rall. molto - - - - - a tempo, molto pomposo

430

ff

435

440

ff