

# SINFONIA in C MAJOR

(from: Cantata 'O Fronde Care')  
for 3 Natural Trumpets and Organ

Score (03':20")

Rosa Giacinta Badalli (c.1660 - c.1715)

Arr. Michel Rondeau

Allegro moderato  $\text{♩} = 90$

Trumpet in C 1

Trumpet in C 2

Trumpet in C 3

Timpani

Organ

This system contains the first three staves of the score. The top three staves are for Trumpet in C 1, Trumpet in C 2, and Trumpet in C 3. The Trumpet in C 1 part begins with a quarter rest, followed by a quarter note G4, and then a series of eighth notes. The other two trumpet parts have quarter rests. The Timpani part starts with a quarter note G4, followed by quarter notes C5 and G4. The Organ part consists of two staves: the right hand plays chords and the left hand plays a bass line. A 'G-C' marking is placed above the first measure of the organ part.

C Tpt. 1

C Tpt. 2

C Tpt. 3

Timp.

Org.

This system contains the next three staves of the score. The top three staves are for C Tpt. 1, C Tpt. 2, and C Tpt. 3. C Tpt. 1 has a four-measure rest, then a quarter note G4, followed by a series of eighth notes. C Tpt. 2 has a quarter rest, followed by a quarter note G4, and then eighth notes. C Tpt. 3 has a quarter rest. The Timp. part starts with a quarter note G4, followed by quarter notes C5 and G4. The Organ part continues with two staves, maintaining the chordal and bass line accompaniment.

SINFONIA in C MAJOR - Badalli - Score

2  
7

C Tpt. 1

C Tpt. 2

C Tpt. 3

Timp.

Org.

11

C Tpt. 1

C Tpt. 2

C Tpt. 3

Timp.

Org.

SINFONIA in C MAJOR - Badalli - Score

15

C Tpt. 1

C Tpt. 2

C Tpt. 3

Timp.

Org.

19

C Tpt. 1

C Tpt. 2

C Tpt. 3

Timp.

Org.

SINFONIA in C MAJOR - Badalli - Score

4  
23

C Tpt. 1

C Tpt. 2

C Tpt. 3

Timp.

Org.

23

27

C Tpt. 1

C Tpt. 2

C Tpt. 3

Timp.

Org.

27

SINFONIA in C MAJOR - Badalli - Score

30

C Tpt. 1

C Tpt. 2

C Tpt. 3

Play 2X

Timp.

Org.

34

C Tpt. 1

C Tpt. 2

C Tpt. 3

Timp.

Org.

# SINFONIA in C MAJOR

(from: Cantata 'O Fronde Care')  
for 3 Natural Trumpets and Organ

## C Trumpets

Rosa Giacinta Badalli (c.1660 - c.1715)

Arr. Michel Rondeau

Allegro moderato ♩ = 90

Trumpet in C 1

Trumpet in C 2

Trumpet in C 3

C Tpt. 1

C Tpt. 2

C Tpt. 3

C Tpt. 1

C Tpt. 2

C Tpt. 3

*11*

C Tpt. 1

C Tpt. 2

C Tpt. 3

*15*

C Tpt. 1

C Tpt. 2

C Tpt. 3

*19*

C Tpt. 1

C Tpt. 2

C Tpt. 3

*23*

C Tpt. 1

C Tpt. 2

C Tpt. 3

SINFONIA in C MAJOR - Badalli - C Trumpets

27

C Tpt. 1

C Tpt. 2

C Tpt. 3

This system contains measures 27, 28, and 29. C Tpt. 1 plays a continuous sixteenth-note pattern with a fermata at the end of measure 29. C Tpt. 2 plays a similar pattern with some rests. C Tpt. 3 has whole rests throughout.

30

C Tpt. 1

C Tpt. 2

C Tpt. 3

*Play 2X*

This system contains measures 30, 31, 32, and 33. C Tpt. 1 has rests in measures 30 and 31, then resumes the sixteenth-note pattern. C Tpt. 2 has rests in measures 30 and 31, then resumes. C Tpt. 3 has a 'Play 2X' marking over a sixteenth-note pattern in measures 30 and 31, then has rests in measures 32 and 33.

34

C Tpt. 1

C Tpt. 2

C Tpt. 3

This system contains measures 34, 35, 36, and 37. C Tpt. 1 and C Tpt. 2 have whole rests for all four measures. C Tpt. 3 plays a sixteenth-note pattern throughout, ending with a double bar line and repeat dots in measure 37.



# SINFONIA in C MAJOR

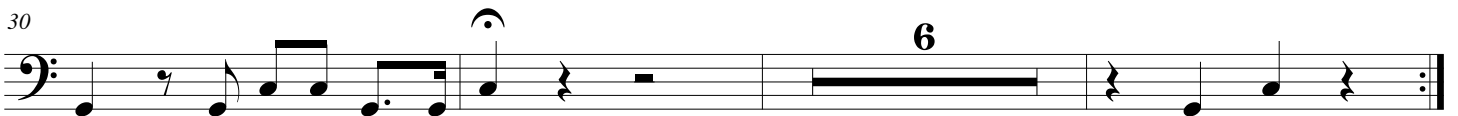
(from: Cantata 'O Fronde Care')  
for 3 Natural Trumpets and Organ

## Timpani (G-C)

Rosa Giacinta Badalli (c.1660 - c.1715)

Arr. Michel Rondeau

Allegro moderato ♩ = 90



# SINFONIA in C MAJOR

(from: Cantata 'O Fronde Care')  
for 3 Natural Trumpets and Organ

Rosa Giacinta Badalli (c.1660 - c.1715)

Arr. Michel Rondeau

## Organ

Trumpet in C 1

Trumpet in C 2

Trumpet in C 3

Timpani

G-C

Organ

Allegro moderato ♩ = 90

C Tpt. 1

C Tpt. 2

C Tpt. 3

Timp.

Org.

# SINFONIA in C MAJOR - Badalli - Organ

2

C Tpt. 1

C Tpt. 2

C Tpt. 3

Timp.

Org.

7

C Tpt. 1

C Tpt. 2

C Tpt. 3

Timp.

Org.

11

SINFONIA in C MAJOR - Badalli - Organ

15

C Tpt. 1

C Tpt. 2

C Tpt. 3

Timp.

Org.

19

C Tpt. 1

C Tpt. 2

C Tpt. 3

Timp.

Org.

SINFONIA in C MAJOR - Badalli - Organ

4

23

C Tpt. 1

C Tpt. 2

C Tpt. 3

Timp.

Org.

27

C Tpt. 1

C Tpt. 2

C Tpt. 3

Timp.

Org.

SINFONIA in C MAJOR - Badalli - Organ

30

C Tpt. 1

C Tpt. 2

C Tpt. 3

Play 2X

Timp.

Org.

34

C Tpt. 1

C Tpt. 2

C Tpt. 3

Timp.

Org.