

Violin I

Alma de la Tierra

Fernando Giunta

1)Edem-Atuel y sus Amigos-Fiesta en la Aldea

Tranquilo ♩ = 76

9

pp *mf*

13

sfz

18 *rit.*..... *a tempo*

p *pp*

23

28

33

p

36 *mf* *arco*

39 *mf*

42 *p*

47 *rit.*.....

51 **A** a tempo

57

61 rit..... a tempo ♩ = 116
pizz.
mf

65

68 p mf p mf

71 p p mf

74 mf p p

77 p mf p p

80 p p p 2

85 arco *p* *p* 3

91 arco *mf*

94

96 a tempo *fp* B

99

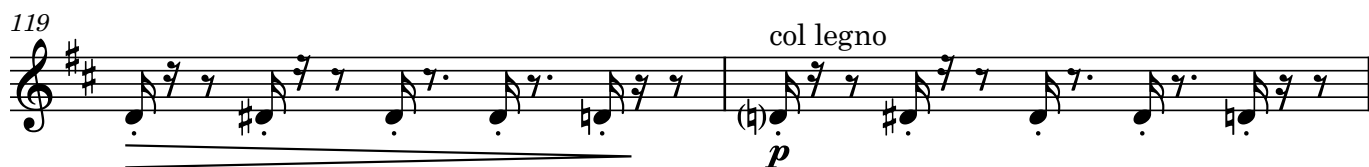
103 2

107 arco *mf* *mf*

110



PONTICHELLO



133 *arco* *f* *rit.* 5

141a tempo 2 *pizz.* *p*

146 3 *arco*

150 C

152 11 *col legno* *f* *p*

165 *rit.*.....a tempo 1 *p* *p*

169 a tempo nat. 2 D a tempo col legno *p*

174

177

180

182 **4** **3** *f* *ff* *arco*

191 **E** Allegro ♩ = 86 **53** *mp*

247 *mp*

251

255

259 **15**

278 *mp*

283 *f* *p*

287

288 *f* *sul pont.*

291

293 *f*

296

299

302 *fp* *mf* *sul pont.* *nat.*

305

308 7

The musical score for Violin I spans measures 288 to 308. The key signature is three sharps (F#, C#, G#). The notation includes slurs, accents (>), and dynamic markings. The instruction 'sul pont.' is used at measures 288 and 302. Measure 308 concludes with a fermata over a whole note chord.

Violin I musical score, measures 309-335. The score is written in treble clef with a key signature of three sharps (F#, C#, G#). The music features a complex rhythmic pattern of eighth and sixteenth notes, often beamed together. Dynamics include *f* (forte), *ff* (fortissimo), *fff* (fortississimo), *p* (piano), and *mp* (mezzo-piano). Performance instructions include *nat.* (natural), *cresc.* (crescendo), and *au talon* (on the heel). A box labeled **F** is present above measure 312. The score ends with a double bar line at measure 335.

309

312 **F** *nat.*

315 *f*

317 *cresc.*

320 *au talon* *ff*

323

326

329

332 *fff* *p* *mp*

335

336 *rit.*.....

mf

339 *rit.*.....

f

Allegretto ♩ = 82

Tamb.

344 *fff*

fff

G

25

10

382 *mp*

mp

385

mp

388

mp

391

mp

394

mp

397

mp

13

412 *mp*

417 *f* *p*

422 *mf*

H

425 *f* *p* *mp*

428 *mf*

432 *mf*

436

440 *tr*

I

446 *f* *rit.* $\text{♩} = 82$

450 *ff* $\text{♩} = 76$ *ff*

Violin I

Alma de la Tierra

Fernando Giunta

II-La Sequía

♩ = 66

pp

5 *p*

9 *f* **A** 7

19 pizz. *p*

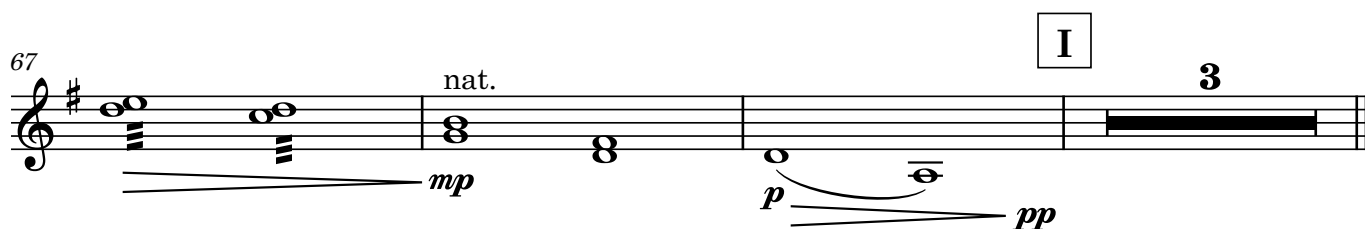
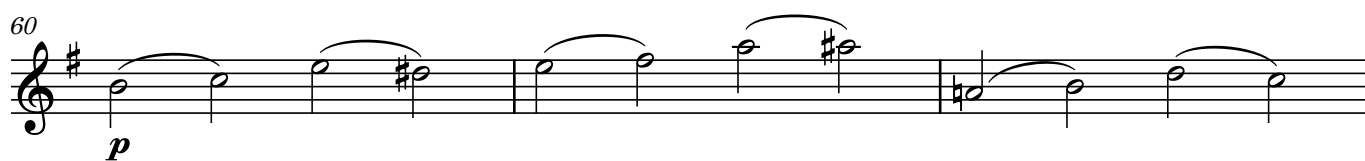
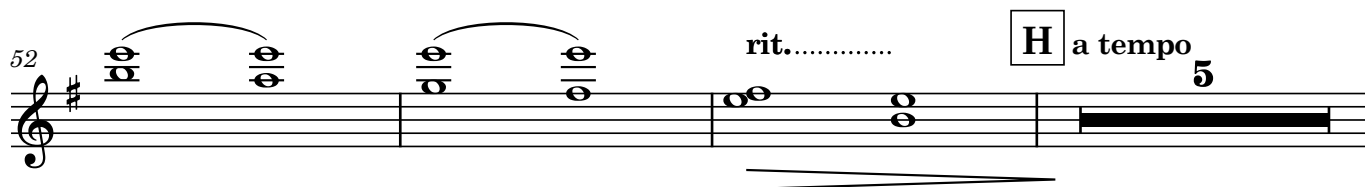
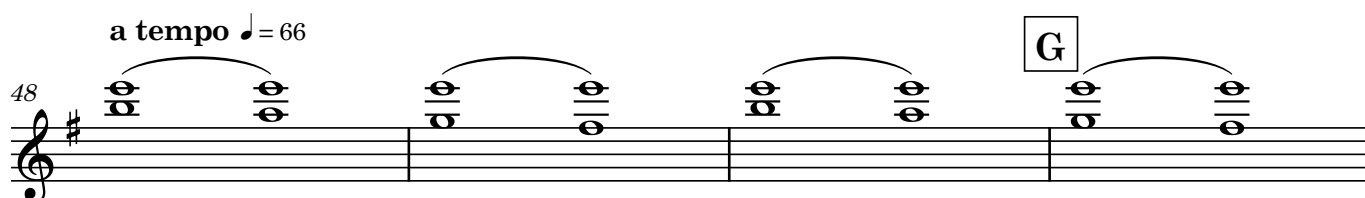
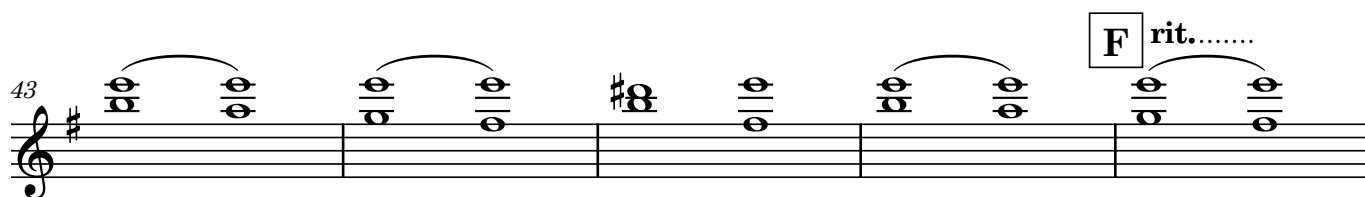
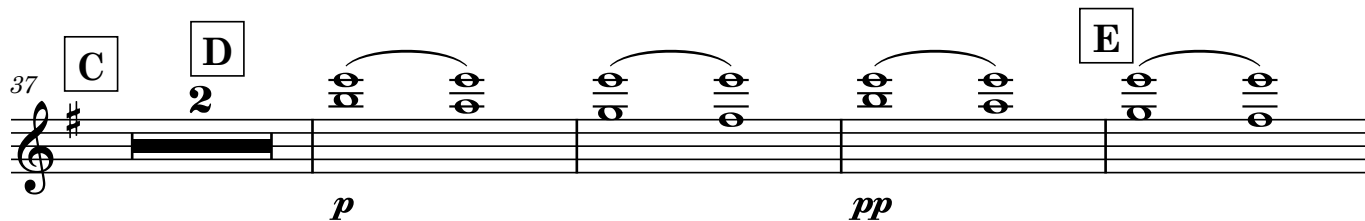
22 arco *p* *pp*

25 **B** *fp*

29 *pp*

31

ATRAS DEL PUENTE



Violin I

Alma de la Tierra

Fernando Giunta

$\text{♩} = 126$

3-Guerra por las Tierras

au talon

ff *ff* *f*

5

8

11

rit.

gliss.

A a tempo Tambór

1

1

17

1

1

39

B

60

C

12

pizz.

pizz.

pizz.

pizz.

pizz.

pizz.

arco

76

f

80 sul pont.
au talon
chicharra

f

84 sul pont.
pizz.

mf

col legno

f

89

D

8

100 pizz.

f

104 arco

f

E

108

f

11

122

mf

126

f

130

F

1

8

col legno

142 *mf*

145 *f* **2** **3** **G** sul pont. *f*

153 *ff* arco

158 sul pont. col legno *f* **3** **3**

162 (sul pont.) **3** **3** arco

166 *mp* *mf*

169 *f*

172 rit.

175 **H** Allegro giusto $\text{♩} = 120$ chicharra **2** *fff* *fff* *p*

182 **2** **35**

p

223 **Nat** **I** **24**

mf

251 **J** *mf*

254 *mf*

258 *f*

261 *f* *mf* *pizz.*

265 *f*

269 **K** **23**

295 **L** *arco* *tr* *f* **19**

arco Violin I

319 **M** *f* 19

343 **N** Tambór *mp*

348 arco *gliss.* *mf* spicc.

352

356 *gliss.* 4 **O** au talon Solo *mf*

363

367 *f*

371

375 rit.....

378 $\text{♩} = 80$ *fz*

382 *f*

388 *Lento* *fff* *mf* **P** *Largo* ♩ = 56
sul pont.
col legno

393

396

399

402

405 **Q** *molto rit.*.....

409 *a tempo* *ff*

Violin I

4-Alma de la Tierra

Fernando Giunta

4-Atuel y clara uyen a la momtaña-Sueña-El milagro

Andante $\text{♩} = 54$

con sord.

4 *p*
 10 *p* con sord.
 17 rit.....
 A
 21 a tempo 9 rit..... $\text{♩} = 92$ 1 sul pont. *pp*
 35 $\text{♩} = 100$ rit..... a tempo *pp* *pp* *pp*
 40 rit..... Andante $\text{♩} = 58$ 5 1 rit.....
 B
 50 a tempo 5 rit..... a tempo 4 rit..... 1 nat. senza sord. pizz.
 63 rit..... $\text{♩} = 62$ 2 1 7 accel..... 1

75 $\text{♩} = 110$ arco
mf

77 $\text{♩} = 110$ C pizz.
p

79 $\text{♩} = 110$

82 accel..... D $\text{♩} = 120$
Violín
PONTICHELLO
f

86 *mf*

88

90 col legno

92

94

[95]

97

100

102

105

113

116

119

120

125

135

pizz.

col legno

mf

p

E

arco

rit.....

a tempo

f

rit.....a tempo

3

a tempo

arco

p

col legno

mf

pizz.

p

col legno

mp

mf

F

arco

mf

punta d'arco

8

f

f

rit.....p.....a tempo

p

p

138 **G** a tempo pizz. **1** **2**

a tempo
pizz.

143 *p* col legno

146

149

152 *ff* rit..... $\text{♩} = 80$ **H** $\text{♩} = 66$ **3**

164 nat. arco *mf* *fz* sul pont.

168 rit..... a tempo **I** Adagietto $\text{♩} = 69$ **15**

190 con sord. *mp*

198 *fz* *f*

203 rit.....

J a tempo 9 Riten. $\text{♩} = 60$ **K** Andante $\text{♩} = 90$ sul pont. arco

209 **5** **4** *pp*

229 a tempo

236 sul pont. arco *mp* *mp*

242 rit..... **L** $\text{♩} = 76$ *mp* *p* *pp*

248 *p*

253 *mp* **M** *mf*

256 *f*

259 *f*

262 *f*

265 *f*

N rit..... $\text{♩} = 84$ molto rit... a tempo *mf* *fff*