

Part in F. J. S.

The Love that lives forever

Put in F
G.S.S.

Words by
Geo. P. Wallihan

Thompson's file!
at the expense

music by
John Philip Sousa

Andante
Canzona

Handwritten musical notation for the piano introduction, featuring a treble and bass clef with a key signature of two flats and a 3/4 time signature. The music is marked 'Andante' and 'Canzona'.

I have no thought that is not thine, No
joy I would not have you share

Handwritten musical notation for the first line of lyrics, including vocal line and piano accompaniment with 'Ped' markings.

The love-light from your glowing eyes, so
me of all things is most dear my

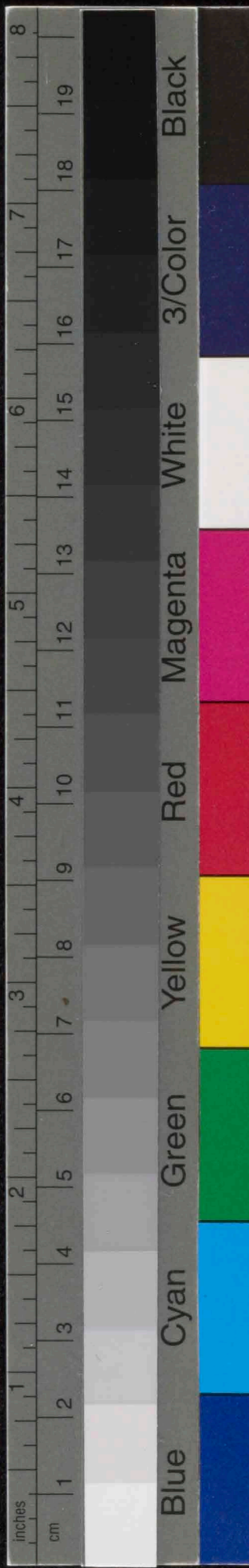
Handwritten musical notation for the second line of lyrics, including vocal line and piano accompaniment with 'Ped' markings.

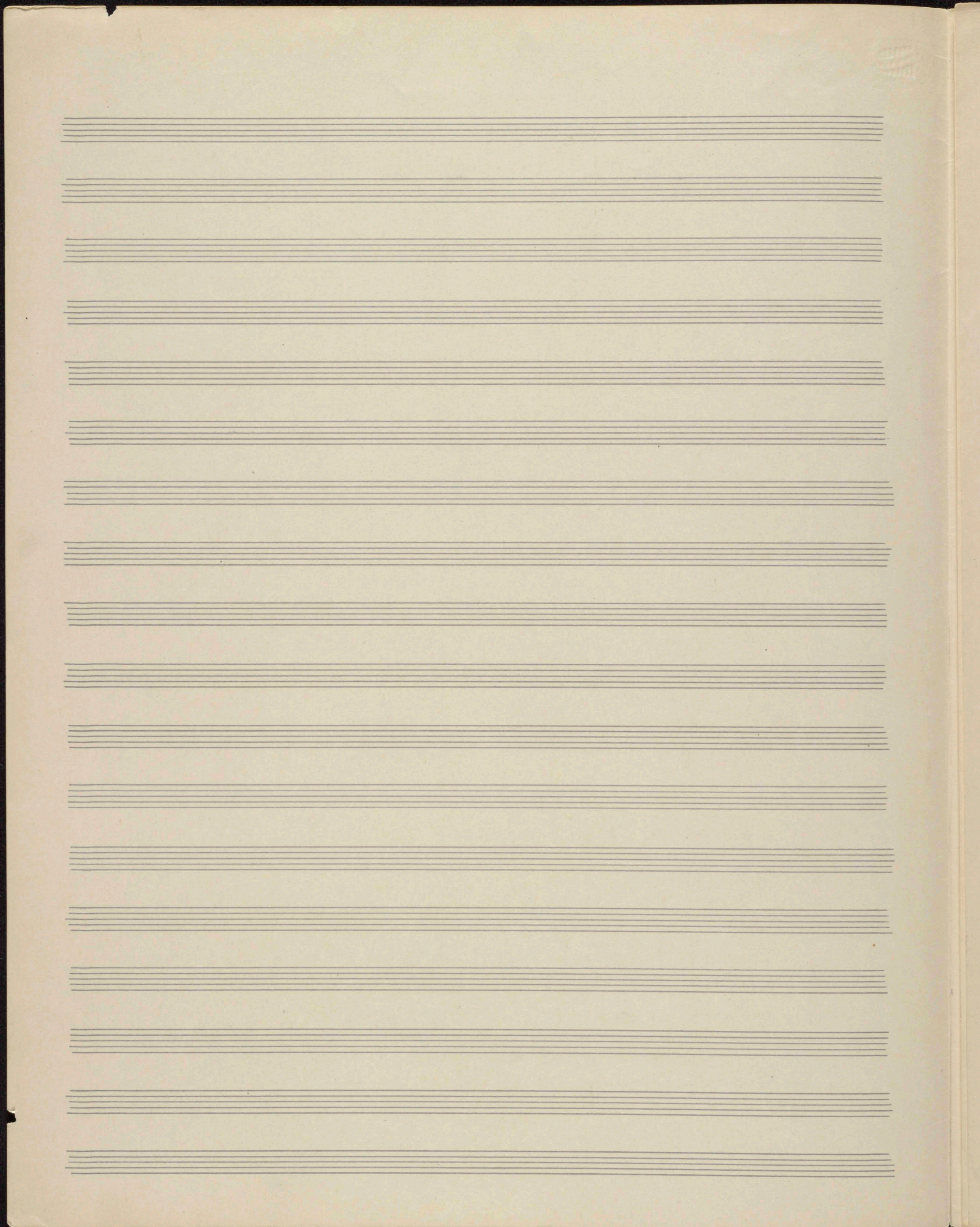
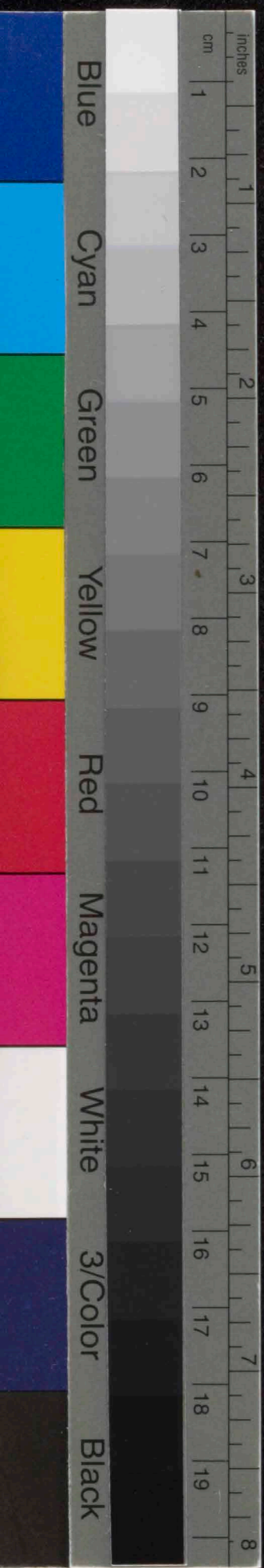
with great expression
Love is like the stars of night, that
cease from shining, never my

Handwritten musical notation for the third line of lyrics, including vocal line and piano accompaniment with 'Ped' markings.

rit
Love is deep, my
Love is true. No
love that lives forever

Handwritten musical notation for the fourth line of lyrics, including vocal line and piano accompaniment with 'rit' marking.





disless tenor

So long as roses bud and bloom, so long as song-birds

Red ♯

sweetly sing, so long as dew on flowers fall, my loving heart to yours will

Red ♯

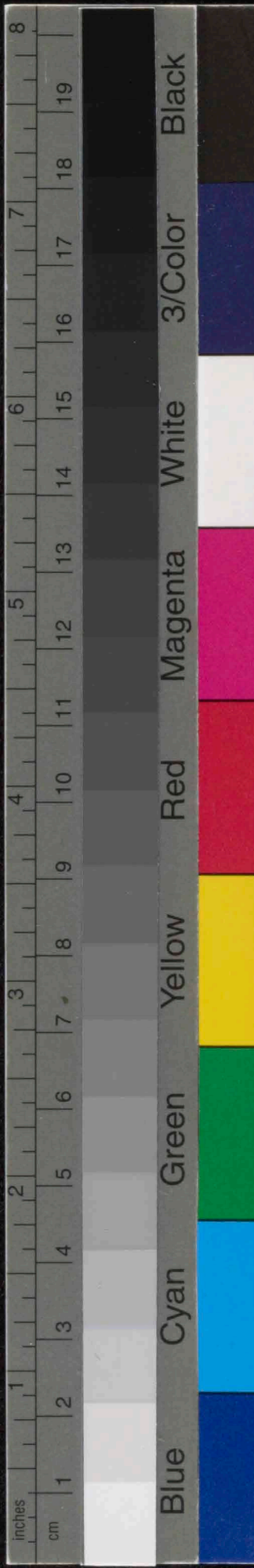
With great expression

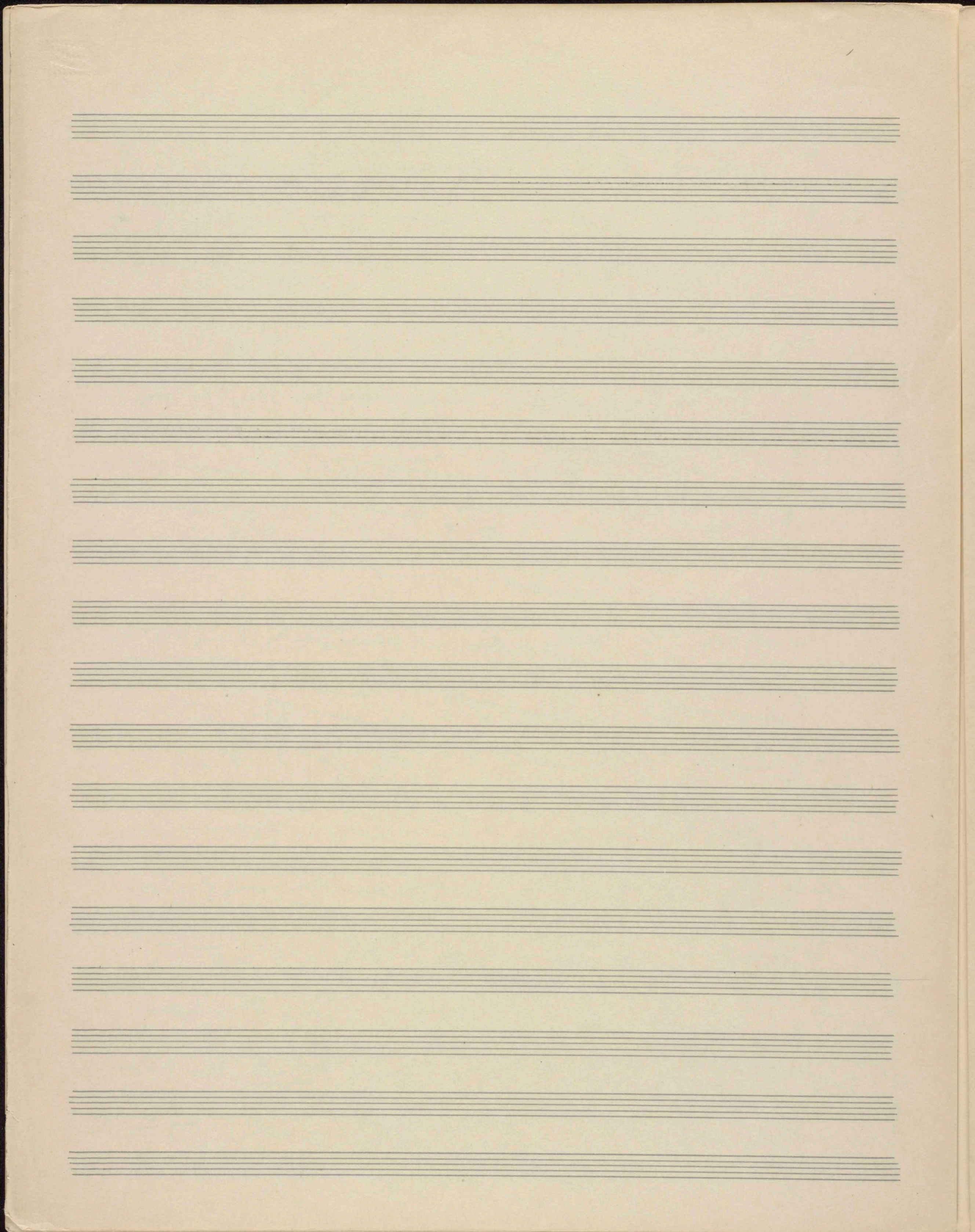
cling. My love is like the ocean's waves, that cease from rolling

never, -- my love is deep, my love is true, the love that lives forever

allamento

Red ♯





Handwritten musical notation on three staves. The notation includes various notes, rests, and dynamic markings. The first staff has a treble clef and a key signature of three flats. The second staff has a bass clef and a key signature of three flats. The third staff has a bass clef and a key signature of three flats. There are some annotations like 'er!' and '8' written above the notes.

Handwritten musical notation on three staves. The notation includes various notes, rests, and dynamic markings. The first staff has a treble clef and a key signature of three flats. The second staff has a bass clef and a key signature of three flats. The third staff has a bass clef and a key signature of three flats. There are some annotations like 'd' and 'MB.' written above the notes.

