

Concerto en Re menor RV 127

I

Antonio VIVALDI

Allegro

f

3

6

9

12

15

17

19

22

25

27

30

33

36

39

42

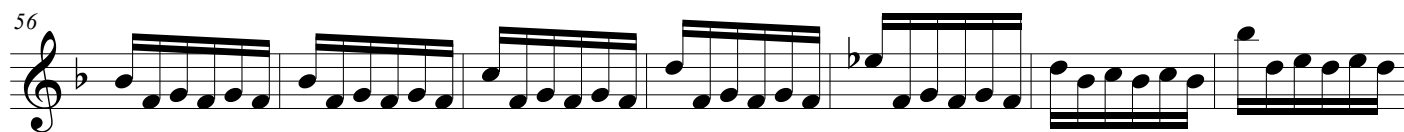
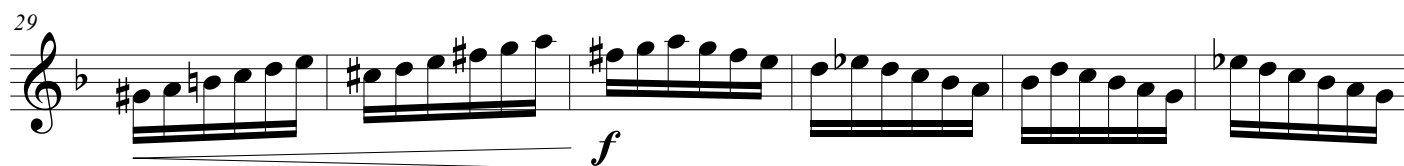
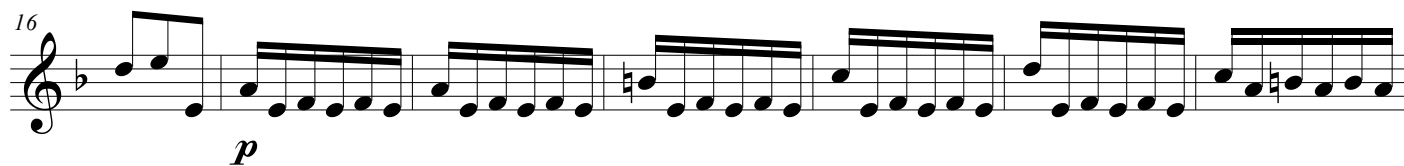
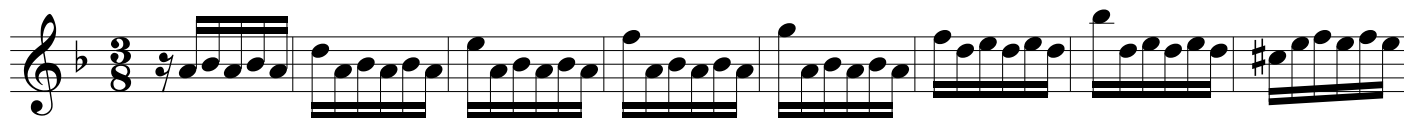
rit.

II

Largo

11

III



63

70

78

rit.

Detailed description: The image shows three systems of musical notation for a single melodic line in treble clef. The key signature is one flat (B-flat). The first system (measures 63-69) features a continuous eighth-note pattern. The second system (measures 70-77) continues this pattern with some variations in grouping. The third system (measures 78-84) shows a deceleration marked 'rit.' starting at measure 78, with the eighth-note pattern gradually slowing down and ending with a half note in measure 84.