

Basso

Concierto para Corno N° 2

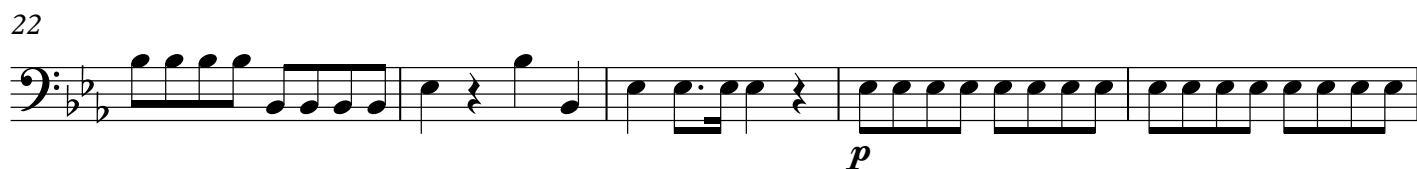
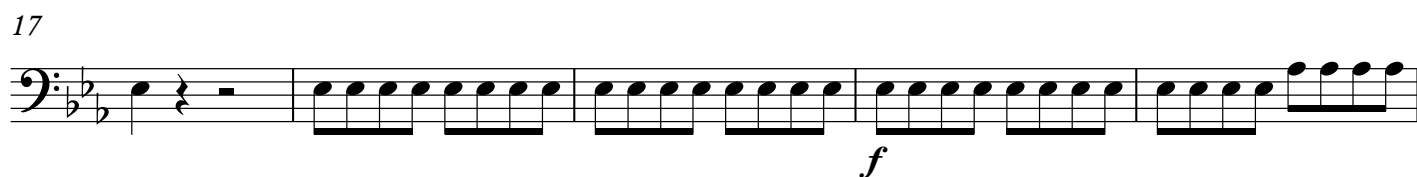
en Mib

Wolfgang Amadeus Mozart

K. 417

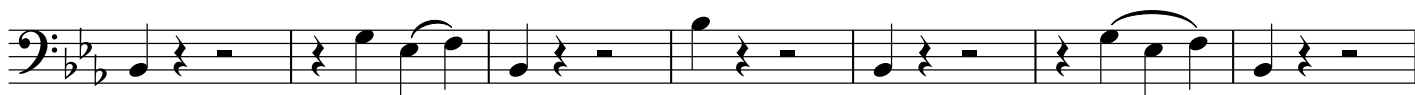
I

Allegro maestoso.



V.S. !!

46



53



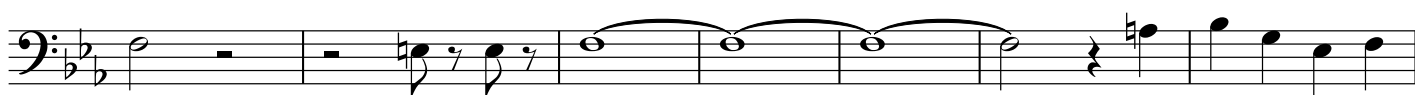
59



64



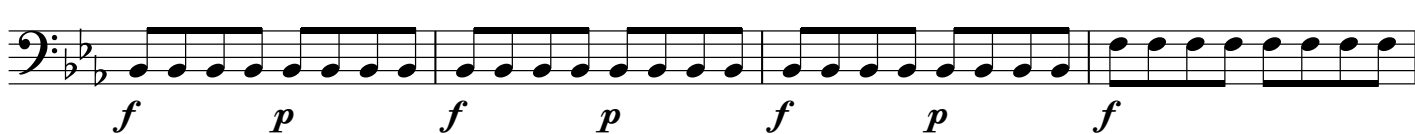
71



78



83



87



94



102

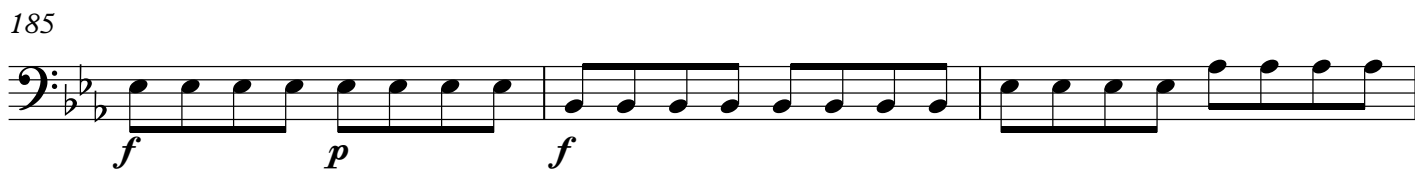


111



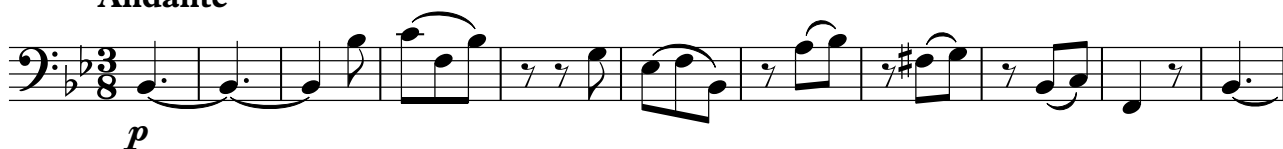
117





II

Andante



58



70



78



III

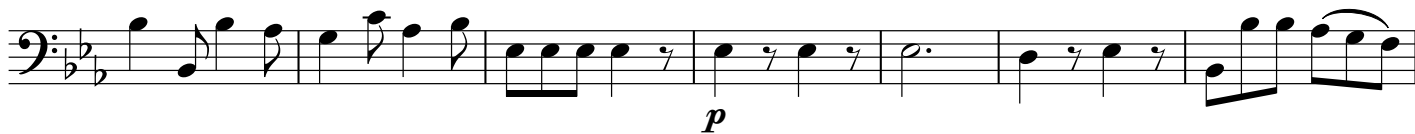
Rondo



7



14



21



30



38



[illegible][illegible]

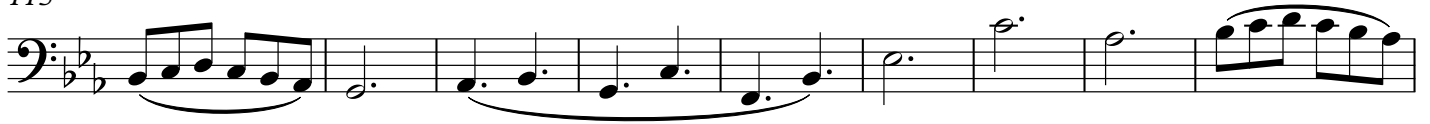
The first staff of music is written in bass clef with a key signature of two flats (B-flat and E-flat). It begins with a dynamic marking of *fp* (fortissimo piano). The notation includes a series of eighth and quarter notes, some beamed together, and rests, indicating a rhythmic pattern.

[illegible][illegible]

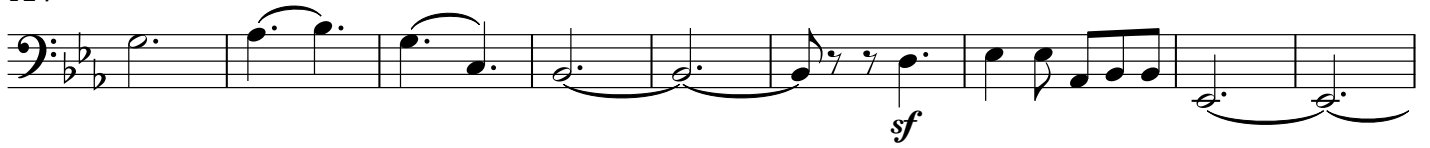
First staff of music, featuring a bass clef, key signature of two flats, and a 3/4 time signature. The melody starts with a forte (*f*) dynamic and includes a piano (*p*) dynamic marking.

[illegible]

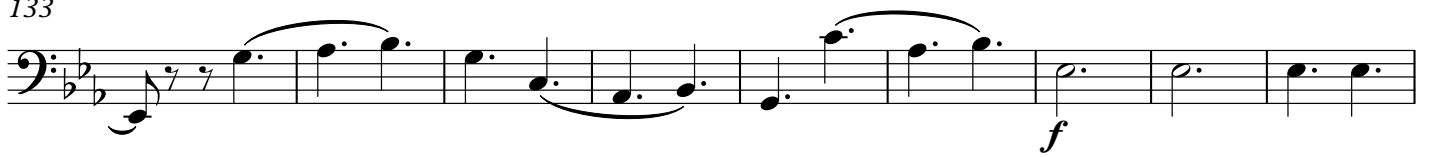
115



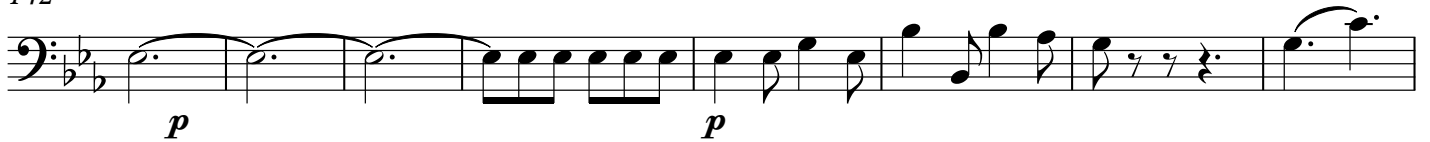
124



133



142



150

Più Allegro.

157



164



168

