

Cantos infantiles y Columpios

Allegretto

Handwritten musical score for 'Allegretto'. It consists of three staves. The top staff is in treble clef with a key signature of one flat and a common time signature. It contains a melodic line with several measures of chords and a triplet of eighth notes. Pedal markings 'Ped.' and asterisks are present. The middle staff contains dynamic markings 'S', 'F', and 'P'. The bottom staff is in bass clef with a key signature of one flat and a common time signature, containing a bass line with chords and a triplet of eighth notes.

Bargo

Handwritten musical score for 'Bargo'. It consists of three staves. The top staff is in treble clef with a key signature of one flat and a common time signature. It contains a melodic line with several measures of chords and a triplet of eighth notes. Pedal markings 'Ped.' and asterisks are present. The middle staff contains dynamic markings 'S', 'F', and 'P'. The bottom staff is in bass clef with a key signature of one flat and a common time signature, containing a bass line with chords and a triplet of eighth notes.

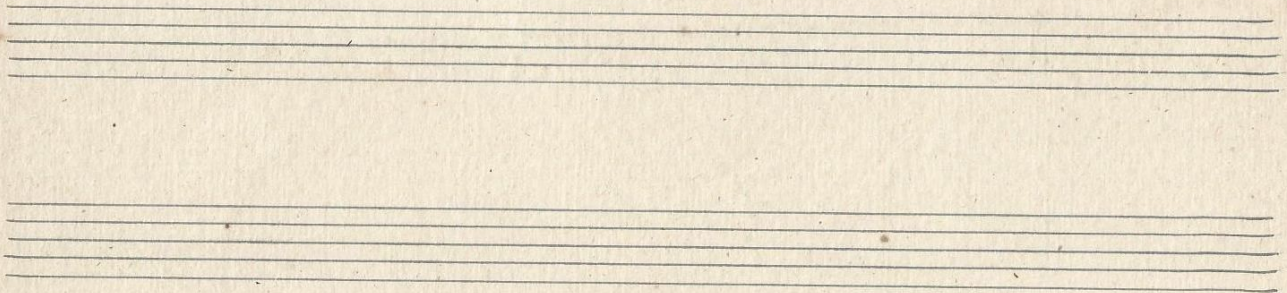
Allegretto

Handwritten musical score for the *Allegretto* section. It consists of three staves. The top staff contains a melodic line with notes and rests, including a fermata. The middle staff has a piano (*p*) dynamic marking and a large, sweeping slur. The bottom staff contains a bass line with notes and rests. Pedal markings (*Ped*) are present on the top staff, with asterisks indicating specific points. A key signature change to three flats is indicated by a double bar line.

Adagio

Handwritten musical score for the *Adagio* section. It consists of three staves. The top staff contains a melodic line with notes and rests, including a fermata. The middle staff has a piano (*p*) dynamic marking and a large, sweeping slur. The bottom staff contains a bass line with notes and rests. Pedal markings (*Ped*) are present on the top staff, with asterisks indicating specific points. A key signature change to three flats is indicated by a double bar line.

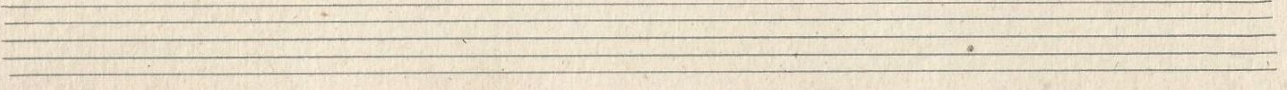
Four empty musical staves, consisting of four sets of five horizontal lines each, arranged vertically.



Handwritten musical notation for the first system. The top staff contains notes with slurs and accents. Below it, a staff contains dynamic markings: *p*, *p*, *SF*, and *p*. Pedal markings are present: ** Ped ** under the first measure, *Ped* under the second measure, and ** Ped ** under the fourth measure. The bottom staff shows chordal accompaniment with slurs.

Largo

Handwritten musical notation for the second system. The top staff contains notes with slurs and accents. Below it, a staff contains dynamic markings: *SF*, *p*, *p*, and *p*. Pedal markings are present: *Ped* under the first measure, ** Ped ** under the second measure, and *Ped.* under the third measure. The bottom staff shows chordal accompaniment with slurs.



Esta composición debe
ejecutarse en la 4^{ta} y 5^{ta}
Octavas de los agudos