

Johann Sebastian Bach



Alla Breve in D major BWV 589 for Organ Transcribed for String Orchestra full score

edited by Alan Bonds

ABOUT THIS WORK

Fairly little is known about this work's origins. Its authenticity has been hotly disputed by Bach experts.

The existing manuscript was originally titled "Allabreve con Pedale pro Organo pleno". Peter Williams, one of the foremost experts on Bach's organ music, says it is "not a close copy of a Bach manuscript" and the author or copyist is not known.

Some have also labelled it a 'Prelude' - a fairly meaningless title. Most Bach 'preludes' have an improvisable quality, and this piece is not - it is a carefully crafted exercise in counterpoint.

ABOUT THIS TRANSCRIPTION

This particular transcription is in the original key of D major. This key suits a string quartet or string orchestra (with the bass part doubled on Contrabass transposing the bottom D's 8va).

However I have also transposed it to E major for String Orchestra (and both versions are on IMSLP) to enjoy those low pedal notes.

It has not been bowed or fingered.

Allabreve
BWV589

J.S.Bach

4

8

15

22

29

36

42

48

54

60

67

74

81

88

1

VIOLIN I

94



101



108



115



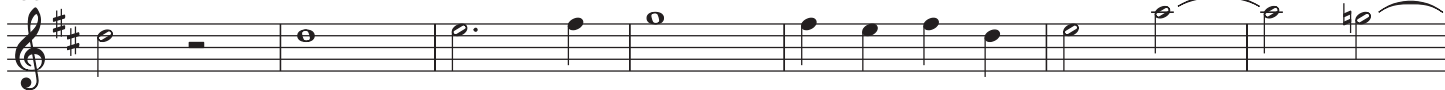
122



129



135



142



149



155



168



175



184



191



Allabreve
BWV589

J.S.Bach

6

8

15

23

33

40

47

61

68

75

82

89

96

VIOLIN 2

103



110



117



124



131



138



145



152



162



170



177



184



191



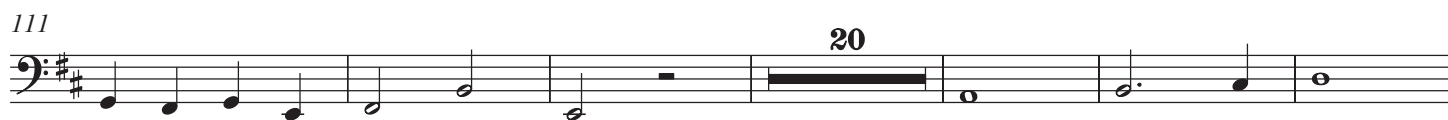
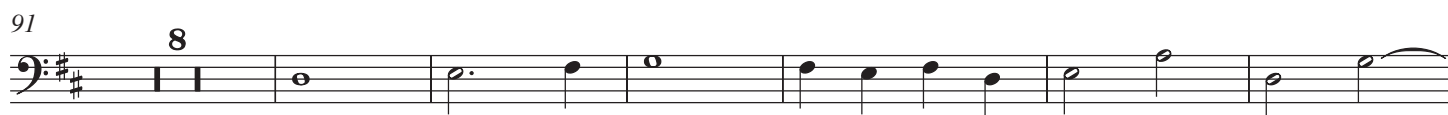
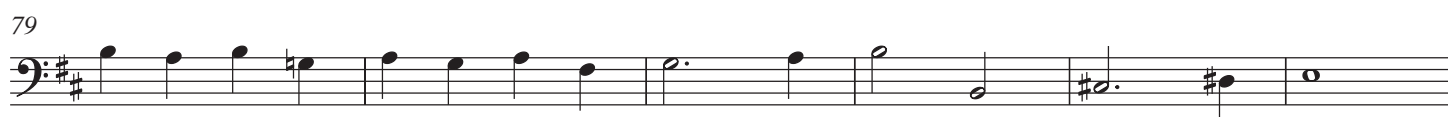
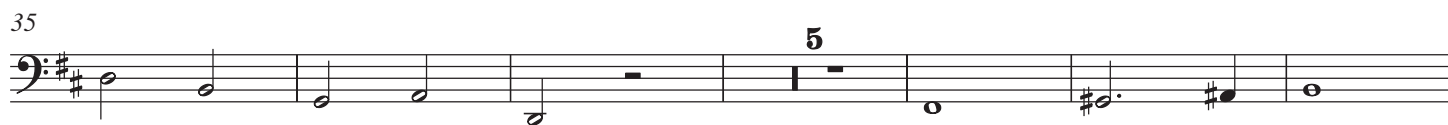
Allabreve
BWV589

J.S.Bach



Allabreve
BWV589

J.S.Bach



VIOLONCELLO

144



149



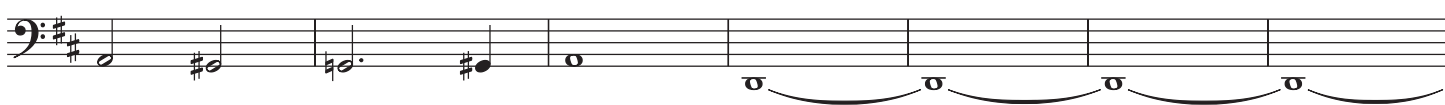
155



176



183



190

