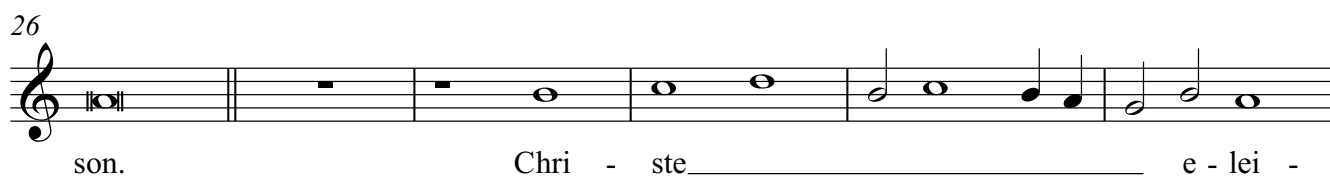
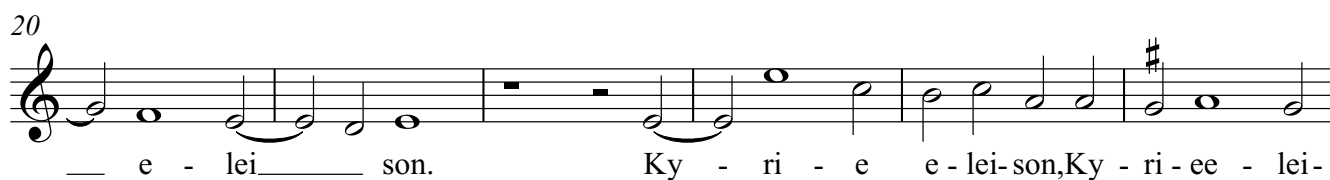
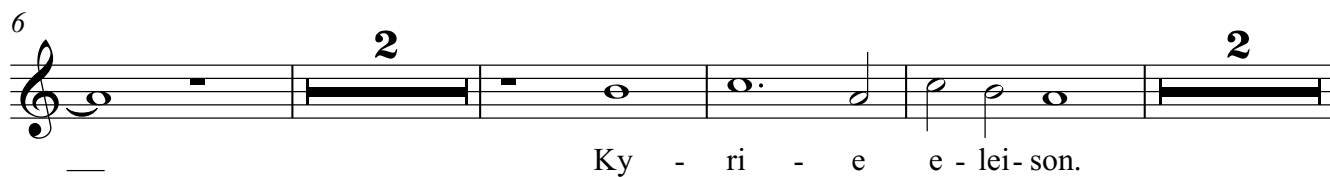


Kyrie

Missa Quando Lieta Sperai

Andrea Gabrieli

♩=92



40
Chri-ste e - lei - son, Chri - ste e - lei - son.

46
Chri - ste e - lei - son, Chri - ste e - lei - son.

51
Chri - ste e - lei - son. Ky - ri - e e - lei -

57
son, Ky - ri - ee - lei - son. Ky - ri - e e -

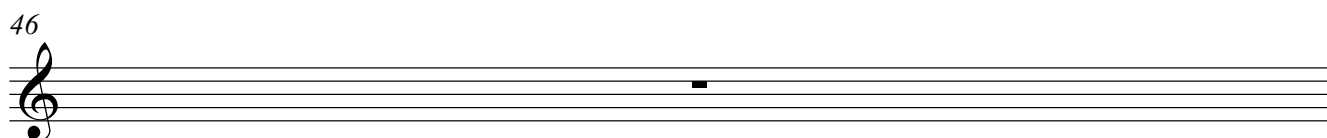
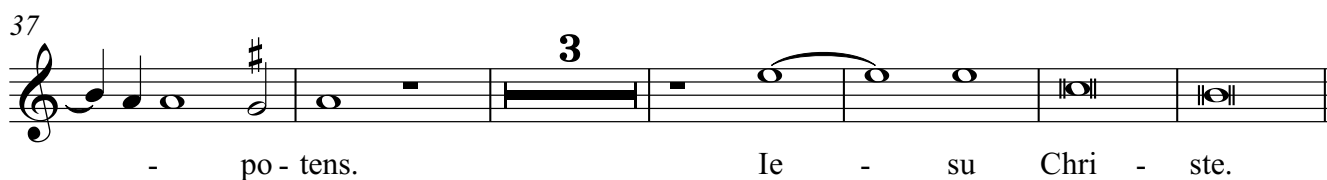
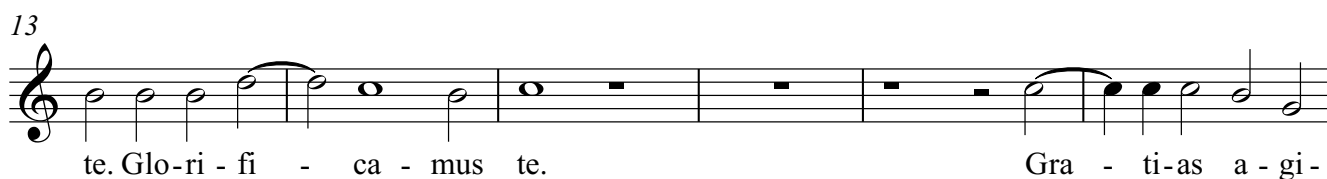
67
- lei-son. Ky - ri - ee-lei-son, Ky - ri - e e - lei-son.

75
Ky-ri - e e - lei - son. Ky-ri - e e - lei-son.

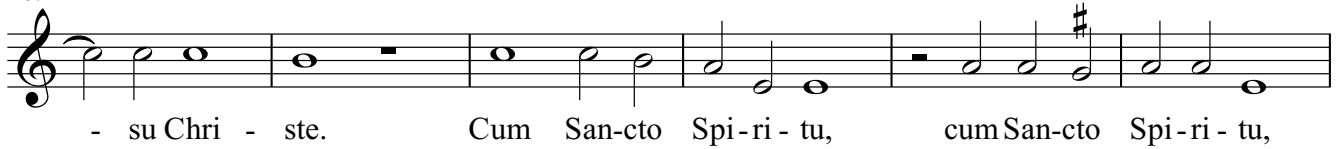
82
Ky - ri - e e - lei - son. Ky - ri - e e - lei - son.

Gloria

3



109

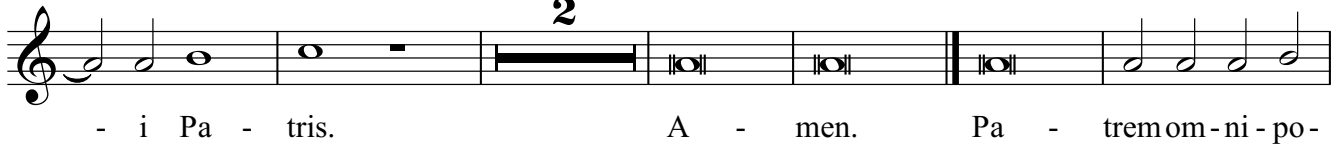


115



Credo

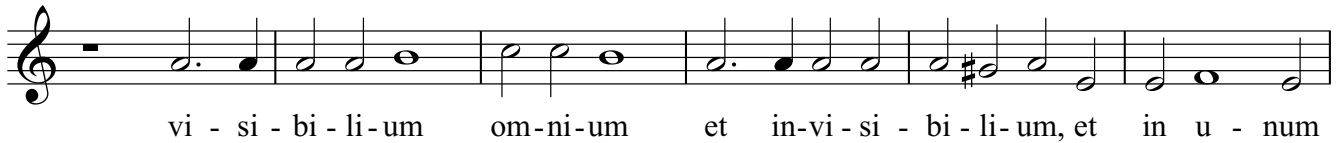
121



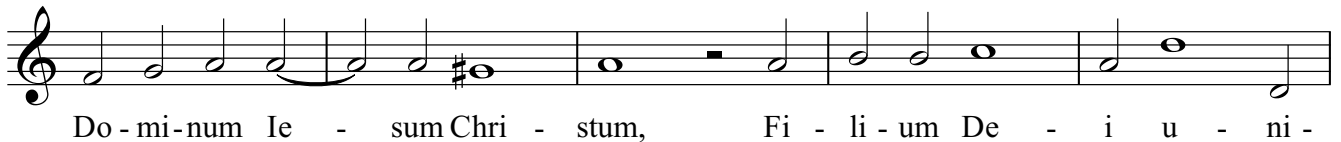
3



13



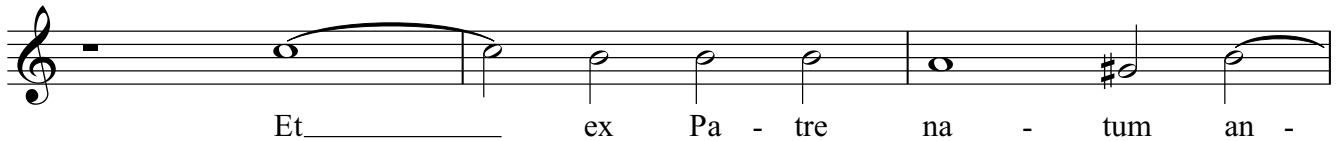
19



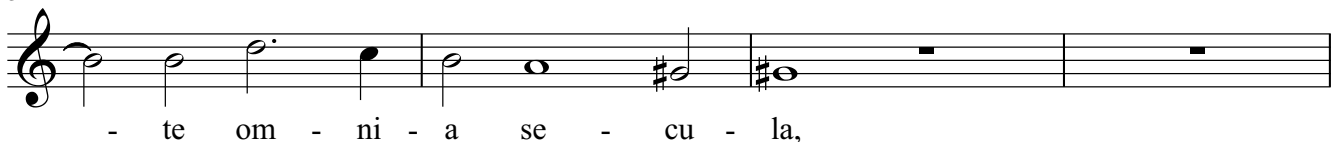
24



29



32



36

 lu - men de lu - mi - ne, De - um ve - rum de De - o ve - ro, Ge - ni -

42

 tum non fac - tum con - sub - stan - ti - a - lem Pa - tri, Per quem om

48

 - ni - a fa - - cta sunt. Qui prop -

54

 ter nos ho - mi - nes et prop - ter no - stram sa - lu - tem

60

 De - scen - dit de ce - lis, de - scen - dit de ce -

67 $\text{♩} = 96$

 lis. Et in - car - na - tus est de Spi - ri - tu

73

 San - cto Ex Ma - ri - a vir - gi - ne, et

79

 ho - mo fac - tus est.

85

 Cru - ci - fi - xus e - ti - am pro no - bis

94

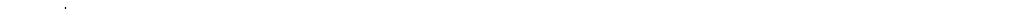
 sub Pon - ti - o Pi - la - to, sub Pon - ti - o Pi -

la - - to, Pas - sus et se - pul - - tus est.

2

Et re-sur-re-xit ter-ti-a di-e se-cun-dum

scrip-tu - - ras, Et as-cen - dit in ce - lum, se-det ad


 dex - te - ram Pa - tris.

tu - rus est cum go - ri - a iu - di - ca - re cu -

- ius re - gni non e - rit fi - nis.

Et _____ in Spi - ri-tum San-ctum Do - mi-num Qui

— ex Pa - tre Fi - li - o - que pro - ce - dit, Qui cum Pa - tre et

The musical notation shows the first five measures of the hymn. The melody begins on G4, moves to A4, then B4, followed by two whole rests. In the fifth measure, it starts on C5, goes down to B4, then A4, and ends on G4.

150

et con-glo - ri - fi - ca - tur, Qui lo - cu - tus est per pro-phe -

155

tas, Et u-nam san - ctam ca - tho - li - cam et a-po-sto-li-cam

160

ec - cle - si - am. Con - fi - te - or u - num bap-ti - sma in re - mis - si -

165

o - nem pec-ca - to - rum. Et ex - pe -

171 $\text{♩} = 150$

- - - cto re - sur - re - cti - o - nem mor - tu -

177 $\text{♩} = 100$

o - rum Et vi - tam ven - tu -

183

- - ri se - cu - li A - men, et vi - tam ven - tu -

188

- - ri se - cu - li A - men.

Sanctus

9

1 $\text{♩} = 84$

3

San - - - ctus, San - - - ctus

9

San - - - - - ctus,

15

Do - mi-nus De-us Sa - ba-oth, Do - mi-nus De-us

21 $\text{♩} = 90$

Sa-ba-oth, Do - mi-nus De-us Sa-ba-oth. Ple - ni sunt ce -

27

2

- li et ter - ra glo - ri - a tu - a,

34

glo - ri - a tu - a, glo - ri -

38 $\text{♩} = 120$

a tu - - a, glo - ri - a tu - a.

Osanna

42

 O - san - na in ex - cel - sis, o - san - na in ex -

50

 cel - sis, o - san - na in ex - cel - sis, o - san - na

56

 in ex-cel - sis, o - san - na in ex-cel - sis, o - san - na in ex-cel -

61

 sis, o - san - na in ex-cel - sis, o - san - na in ex-cel - sis.

61

 sis, o - san - na in ex-cel - sis, o - san - na in ex-cel - sis.

1

 TACET A - - gnus De - i, A - - gnus De -

5

 - i, A - gnus De - - i,

16

 qui tol - lis pec - ca - ta mun - di, qui

22

 tol - lis pec - ca - ta mun - di, mi - se -

29

 re - re no - bis, mi - se - re - re no - bis,

35

 mi - se - re - re no - bis, mi - se - re - re

40

no - bis, mi - se - re - re no - bis. _____

Kyrie

Missa Quando Lieta Sperai

Andrea Gabrieli

$\text{♩} = 92$

Ky - ri - e _____ e - lei - son.

11

Ky - ri - e e - lei - son, Ky - ri - e e - lei - son. Ky - ri - e _____

17

_____ e - lei - son. Ky -

22

- ri - e e - lei - son, Ky - ri - e e - lei - son.

27

Chri - ste e - lei - son, _____ Chri - ste e - lei -

33

son, Chri - ste e - - - lei - son.

39

Chri - ste e - lei - son, Chri - ste e - - lei -

44

son. Chri - ste e - lei - son. _____

Sextus

50

Chri - ste e - lei - son.

54

Ky - ri - e e - lei - son.

4

63

Ky - ri - e e - lei - son. Ky - ri - e

69

e - lei - son. Ky - ri - ee - lei - son. _____

75

Ky - ri - - - e e - lei - - - son.

2

82 *1*

Ky - ri - e e - lei Gloria son. Et in ter - ra


2

pax ho-mi-ni - bus bo - nae vo-lun - ta - tis. Lau-da - mus te. Be-

8

ne - di - ca-mus te. Ad - o - ra - mus te. Glo - ri - fi -

14



ca-mus te, glo - ri - fi-ca-mus te. Gra - ti-as

20

a - gi-mus ti - bi pro - pter ma - - gnam glo -

27
ri - am tu - am. **2** Do - mi - ne De - us, Rex cae - le -

34
stis, De - us Pa - ter om - ni - po - tens. **4** Ie - su

44
Chri - ste. Do - mi - ne De - us, A - - gnus De -

50
- i, Do - mi - ne De - us, Do - mi - ne De - us, A -

56
- gnus De - i, Fi - li - us Pa - tris, Fi - li - us

61
Pa - tris, Fi - li - us Pa - tris, Fi - li - us Pa -

66
tris, Fi - li - us Pa - tris, Fi - li - us Pa - tris.

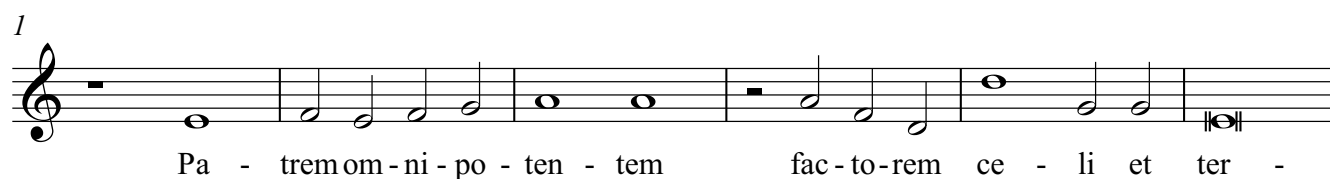
70 = 94
Qui tol - lis pec - ca - ta mun - di, **3** mi - se -

78
re - re no - bis. Qui tol - lis pec - ca - ta mun

83
- - di su - sci - pe



Credo



29

- ni-tum. Et ex Pa-tre na-tum an-te om-ni-a se-cu-la, De-

35

The musical notation for measure 35 consists of a single staff with a treble clef and a key signature of one sharp (F#). The melody begins with a quarter note F#, followed by a quarter note G#. This is followed by two measures of whole rests. In the fourth measure, there is a dotted half note F#. The fifth measure contains a half note G#. The sixth measure has a half note A. The seventh measure features a half note B. Finally, the eighth measure concludes with a half note C.

um de De - o, De - um ve - rum de De-o ve -

41

- ro, Ge - ni-tum non fac - tum con - sub-stan-ti - a - lem Pa -

46

- tri, Per quem om - ni - a fa - cta sunt.

53

Qui prop - ter nos ho - mi - nes et prop-ter no - - stram sa - lu -

58

- tem, De - scen - dit de ce - lis,

63

de - scen - dit de ce - lis, de - scen - dit de ce - lis.

68 $\text{♩} = 96$

Et in - car - na - tus est de Spi - ri - tu San - cto

75

Ex Ma - ri - a vir - gi - ne, et ho - mo

81

fac - tus est, et ho - mo fac - tus est.

85 **27** **23** $\text{♩} = 100$

Et in Spi - ri-tum San-ctum Do-mi-num, et vi-vi - fi -

139

can - tem, Qui ex Pa - tre Fi - li - o - que pro - ce - dit, Qui

144

cum Pa - tre et Fi - li - o si - mul a - do - ra - tur

149

et con-glo - ri - fi - ca - tur, et con-glo - ri - fi - ca - tur, Qui lo - cu - tus

154

est per pro-phe - tas. Et u-nam san - ctam ca - tho - li - cam

159

et a-po-sto-li-cam ec - cle - si - am. Con-fi-te-or u - num bap-ti - sma

164 **2**

in re - mi - si - o - nem pec-ca - to - rum. Et ex -

171 $\text{♩} = 150$ $\text{♩} = 100$

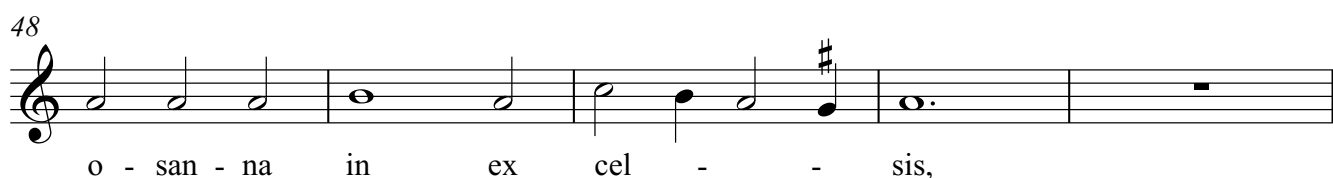
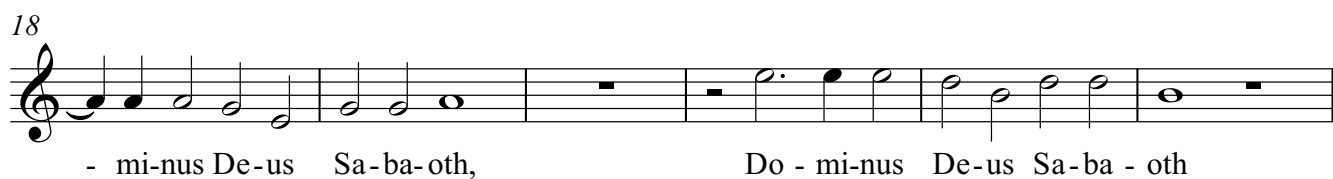
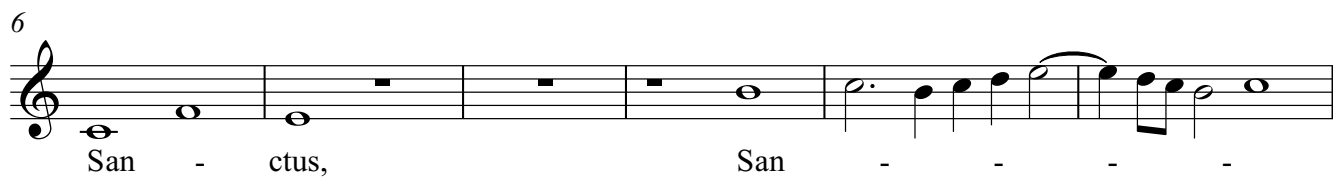
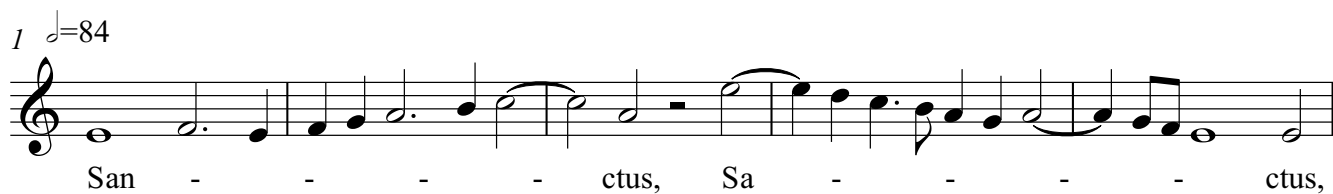
pe - c - to re - sur - re - cti - o - nem mor - tu - o -

178 **2**

rum Et vi - tam ven - tu - ri se -

185

-cu - li A - men et vi - tam



53 $\text{♩}=90$ $\text{♩}=120$

o - san - na in ex - cel - sis, o - san - na in ex - cel - sis, o - san - na

60 $\text{♩}=90$

in ex - cel - sis, o - san - na in ex - cel - sis. _____

Benedictus
Agnus Dei

1 $\text{♩}=100$ **TACET** $\text{♩}=86$

A - - gnus De - - i, _____

7 **3**

A - - gnus De - - i, _____

14

qui tol - lis pec - ca - ta mun -

20

- di, qui tol - lis pec - ca - ta mun - di, mi -

26

- se - re - re no - bis, mi - se - re - re no - bis, mi - se -

32

re - re no - bis, mi - se - re - re no - bis, mi -

38

- se - re - re no - bis, mi - se - re - re no - bis, mi -

42

- se - re - re no - - - bis.

Kyrie

Missa Quando Lieta Sperai

Andrea Gabrieli

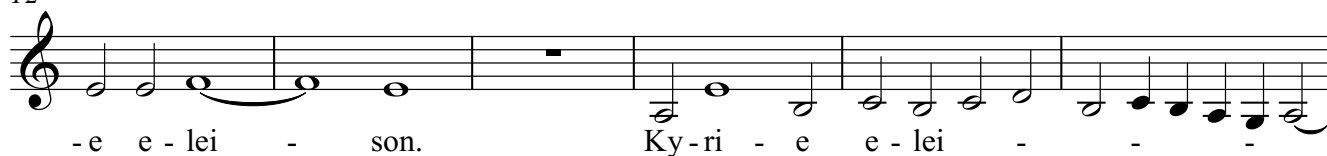
♩=92



6



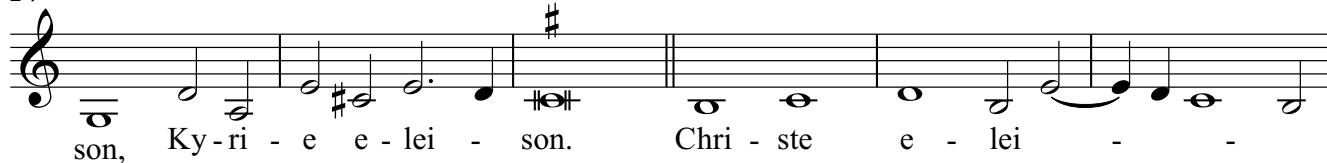
12



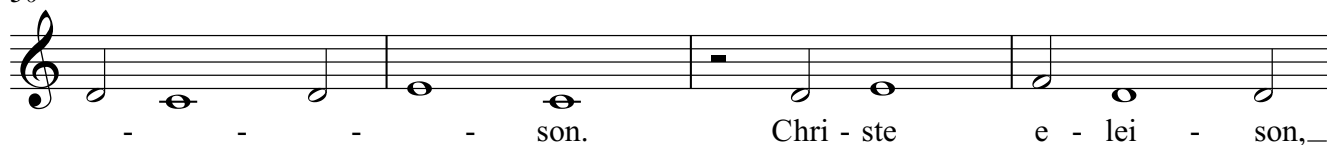
18



24



30



34



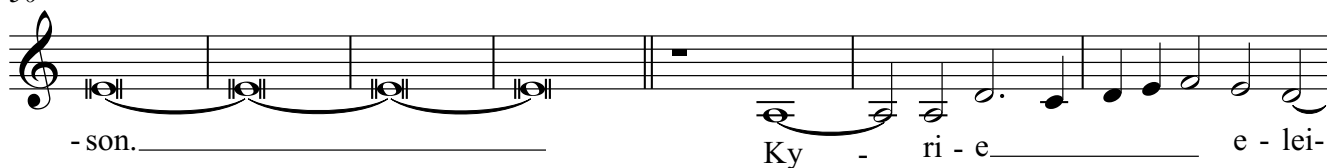
38



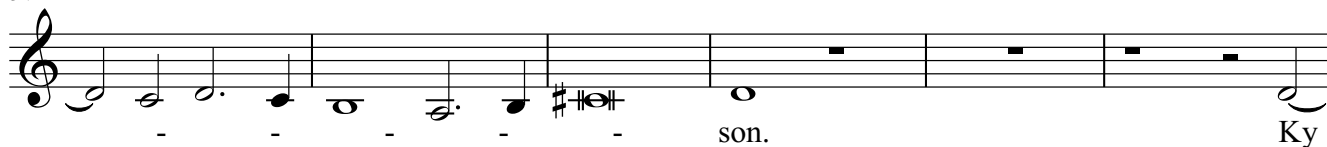
44



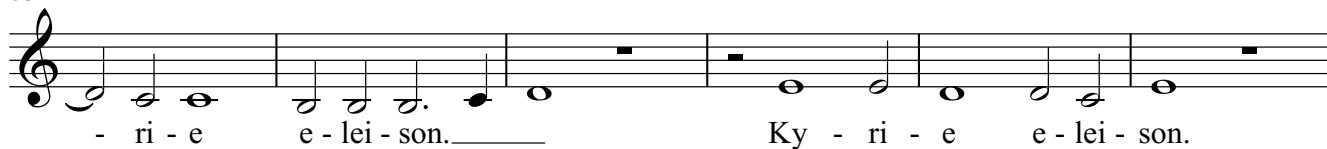
50



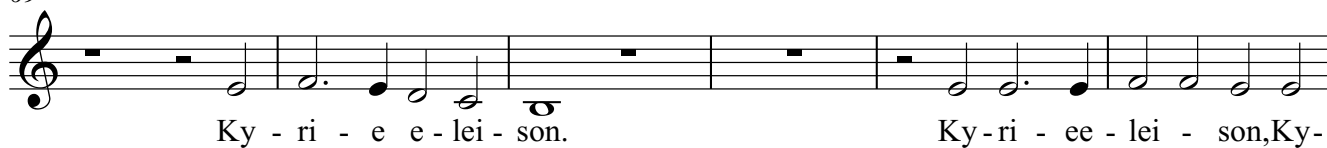
57



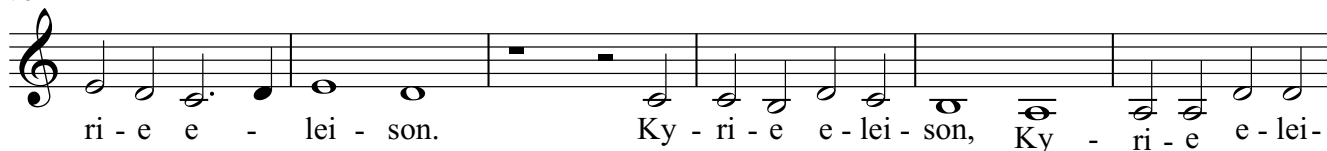
63



69



75



81



1 **4**

Lau-da - mus te, lau - da-mus te. Ad -

10

o - ra - mus te. Glo - ri - fi - ca - mus te. Glo -

16

- ri - fi - ca - mus te. Gra - ti - as a - gi - mus ti -

21

- bi pro - pter mag-nam glo - ri-am tu - am, pro

26

- pter mag-nam. Do - mi - ne De - us, Rex cae - le -

31

- stis, De - us Pa - ter om - ni - po - tens.

37

Do - mi - ne Fi - li u - ni - ge -

41

- ni - te Ie - su Chri - ste.

46 **4**

50
Do - mi - ne De - us, Do - mi - ne De - us, A -

56
- - gnus De - i, Fi - li - us Pa - tris,

61
Fi - li - us Pa - tris, Fi - li - us Pa - - -

65
- tris, Fi - li - us Pa - tris, Fi - li - us Pa - tris.

70 $\text{♩} = 94$
Qui tol - lis pec - ca - ta mun - di, **3** mi -

78
se - re - re no - - bis. Qui tol - lis pec - ca - ta

83
mun - di su - sci-pe de - pre - ca - ti - o - nem no - stram, de - pre - ca - ti - o - nem

89
no - stram. Qui se - des ad dex - te - ram Pa - tris, mi - se - re - re no - bis,

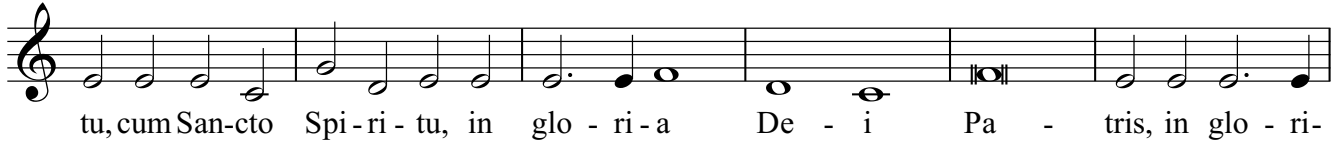
95 $\text{♩} = 100$
mi - se - re - re no - bis, mi - se - re - re no - bis.

101
Quo - ni - am tu so - lus san - ctus, Tu so - lu al -

107



114



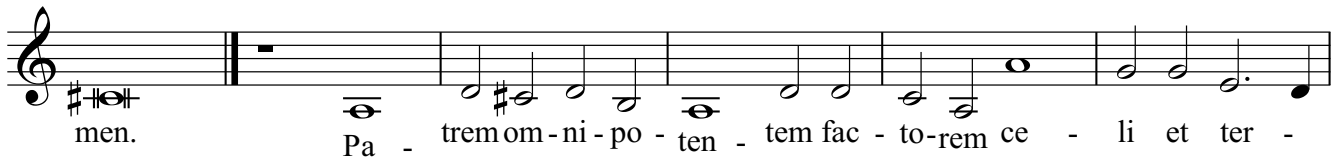
120



Credo

126

1

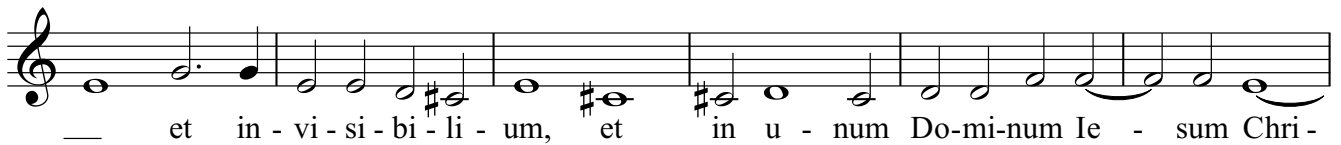


6

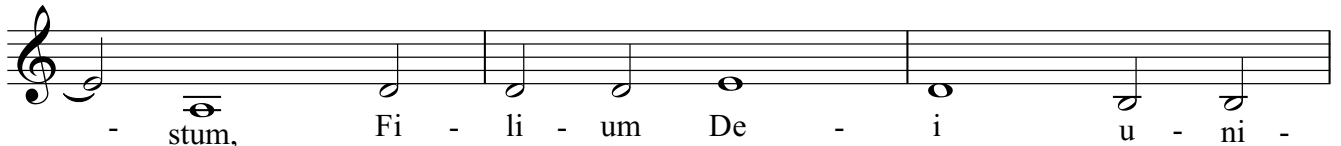
4



15

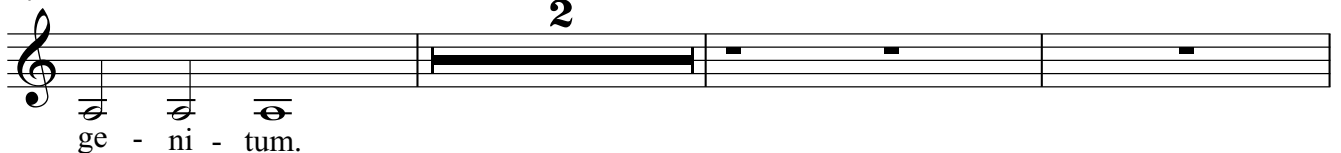


21



24

2



29
Et ex Pa - tre na - - tum an - te om - ni - a se - cu -

34
la, De - um de De - o, lu-men de lu-mi-ne, De - um ve - rum de -

40
De - o ve - ro, Ge - ni-tum non fac - tum con - sub-stan - ti -

45
a - lem Pa - - - - tri Perquem om - ni - a fac -

50
- ta sunt, Qui prop - ter nos ho-mi - nes et prop-ter

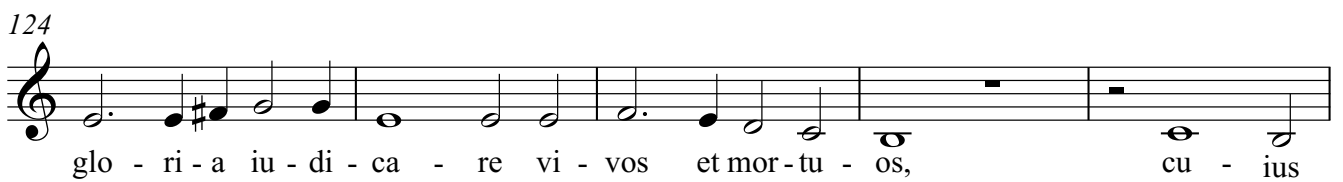
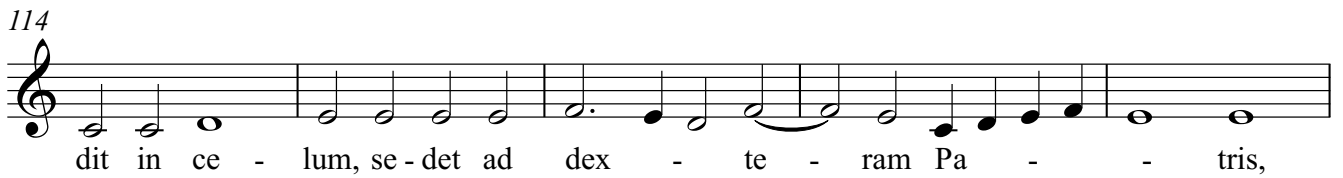
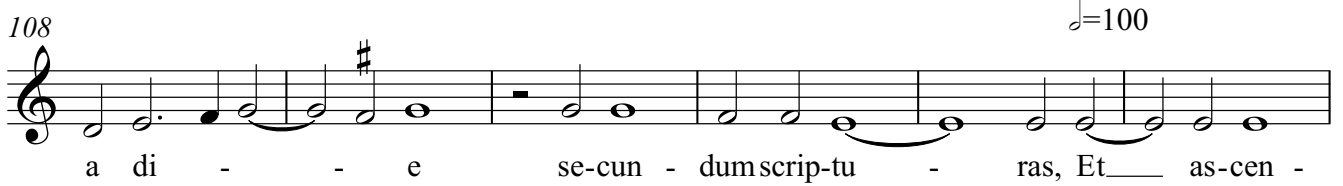
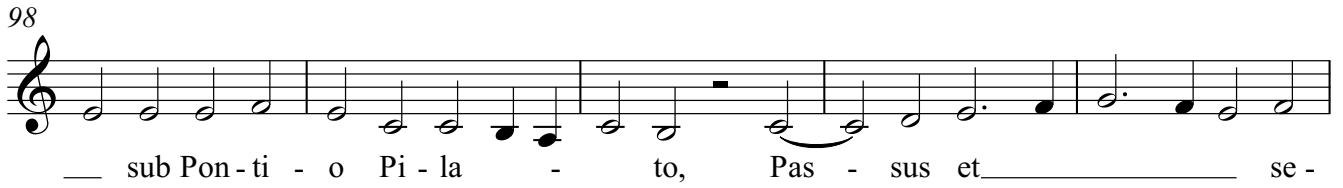
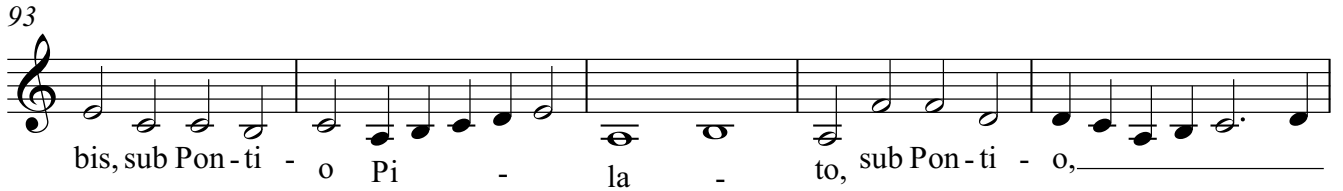
56
no - stram sa - lu - tem, de-scen - dit de ce - lis, de-scen -

62
dit de ce - lis, de-scen - dit de ce - lis.

68 = 96
Et in - car - na - tus est de Spi-ri - tu San - cto

75
Ex Ma - ri - a vir - gi - ne, et ho - mo fac - tus

82
est, fac - tus est. Cru - ci - fi - xus e - ti - am pro no -



140
 tem, Qui ex Pa - tre Fi - li - o - que pro ce - dit, _____

145
 Qui cum Pa - tre et Fi - li - o si - mul a - do - ra - tur et con - glo -

150
 ri - fi - ca - tur Qui lo - cu - tus est per _____ pro - phe -

155
 tas. Et u - nam san - ctam ca - tho - li - cam et a - po -

160
 sto - li - cam ec - cle - si - am. Con - fi - te - or u - num bap - ti - sma in re -

165
 mi - si - o - nem pec - ca - to - rum. Et _____ ex - pe -

172
 - cto re - sur - re - cti - o - nem mor - tu - o - rum

179
 Et vi - tam ven - tu - ri _____ se -

185
 - cu - li A - men, et vi - tam ven - tu - ri

190
 se - - cu - li A - men.

Sanctus

9

1 $\text{♩} = 84$

2

San - ctus, San -

7

- ctus, San - ctus,

13

San - ctus, Do - mi-nus De-us Sa-ba-oth, Do

19

- mi-nus De-us Sa-ba-oth, Do - mi-nus De-us Sa-ba-

24 $\text{♩} = 90$

oth. Ple - ni sunt ce - li et ter - ra,

30

ce - li et ter - ra glo - ri - a tu - a,

36 $\text{♩} = 120$

glo - ri - a tu - a,

Osanna

glo - ri - a tu - a.

42

O - san - na in ex - cel - sis,

46

o - san - na in ex - cel - sis,

2

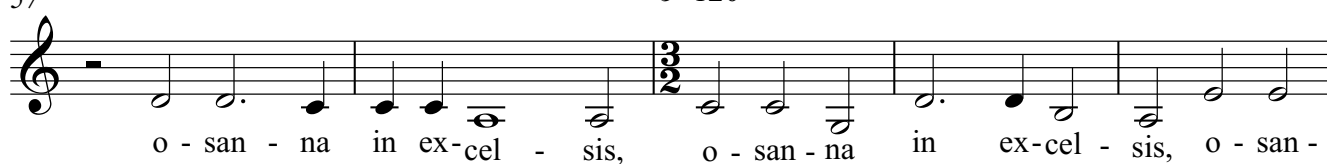
51

♩=90



57

♩=120



62

♩=90

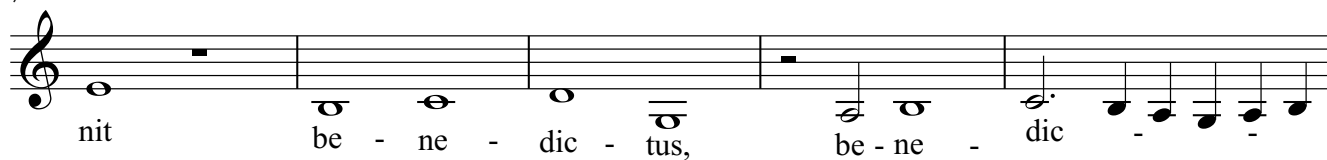


Benedictus

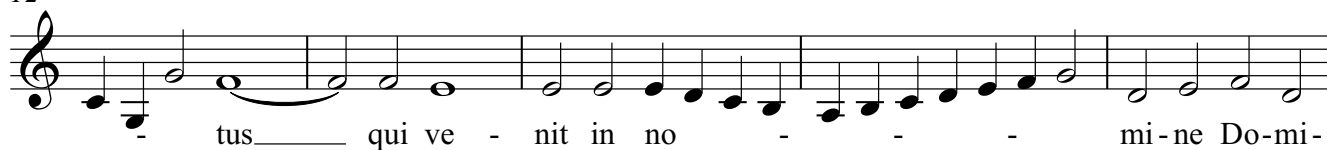
1 ♩=100



7

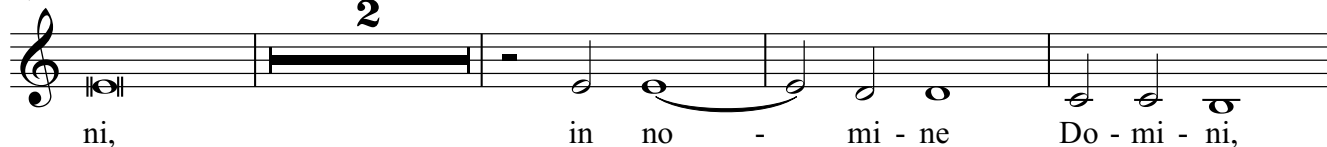


12



17

2

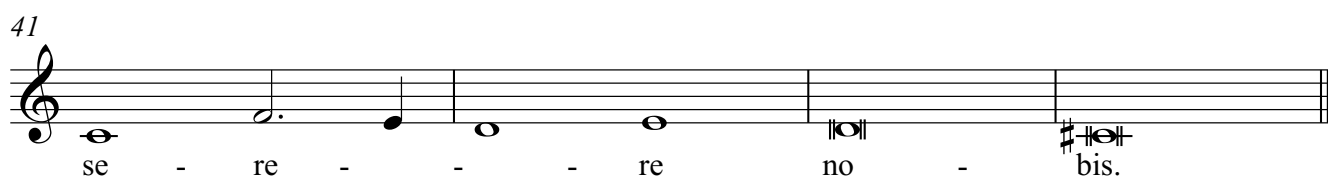
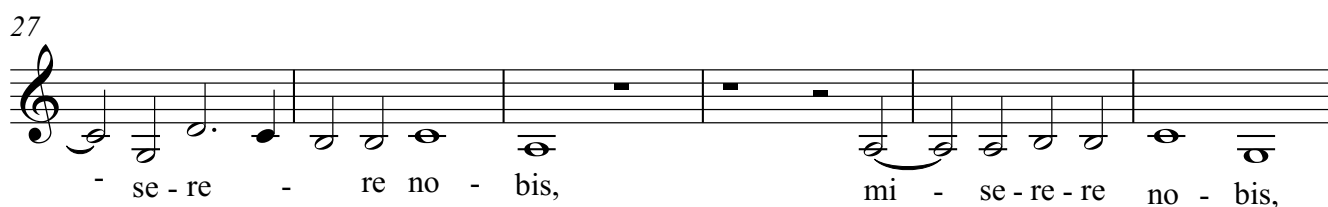
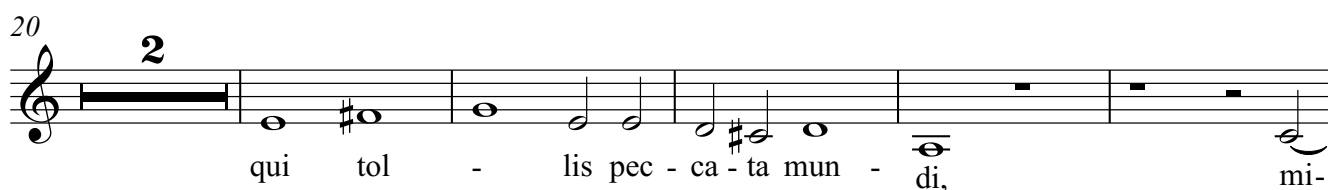
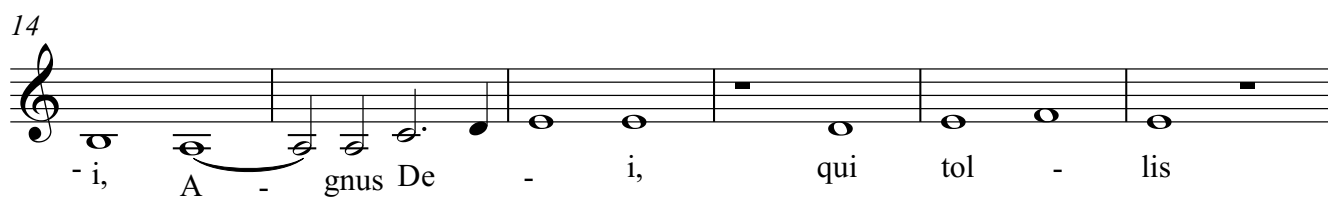


23



Agnus Dei

11



Kyrie

Missa Quando Lieta Sperai

Andrea Gabrieli

$\text{♩} = 92$

4

8 Ky - ri - e e - lei - son, Ky - ri - e e - lei - son, Ky - ri - e e - lei -

10 son. _____ Ky - ri - e e - lei - - -

15 son, Ky - ri - e e - lei son, Ky - ri - e e - lei - son. Ky

21 - ri - e e - lei - son, Ky - ri - e e - lei - - - son.

27 **4** Chri - ste e - lei - - - - - son.

36 Chri - ste e - lei - son. _____ Chri - ste e -

42 lei - son, _____ Chri - ste _____ e - le - son. _____

48 Chri - ste e - lei - son, Chri - ste _____ e - lei - son. _____

54 **4**

58
8 Ky - ri - e _____ e - lei - son, Ky - ri - ee - lei son. Ky

64
8 - ri - e e - lei - son. _____ Ky - ri - e e - lei - son, Ky -

70
8 ri - e e - lei - son, Ky - ri - ee - lei - son, Ky - ri - e e - lei - son.

75
8 Ky - ri - e e - lei - son, Ky - ri - e e - lei - son. Ky - ri - ee - lei -

80
8 son, Ky - ri - ee - lei - son, Ky - ri - e e - lei son, Ky - ri - ee - lei - son. _____

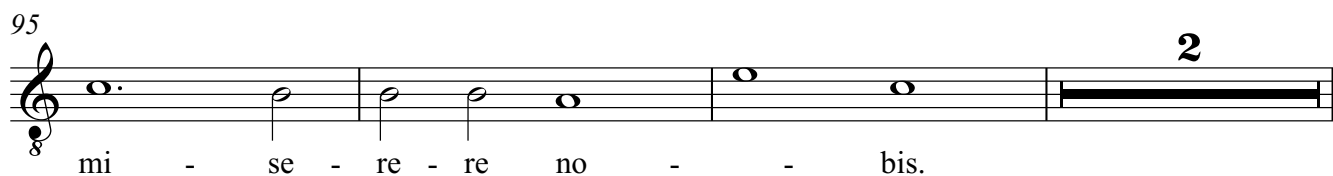
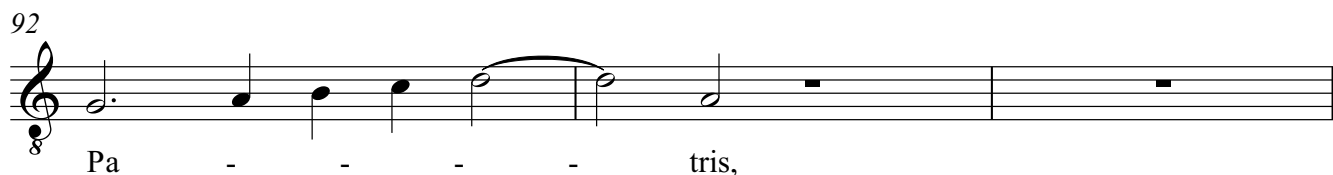
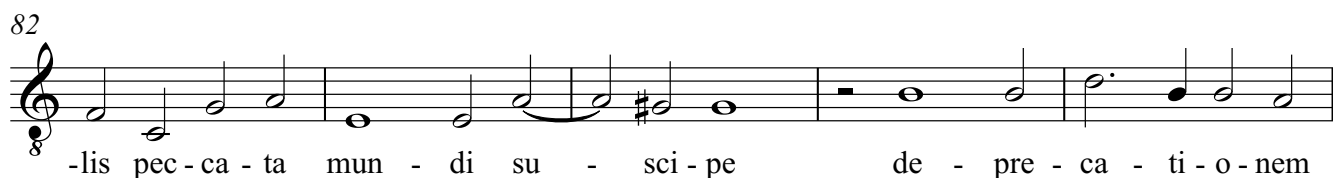
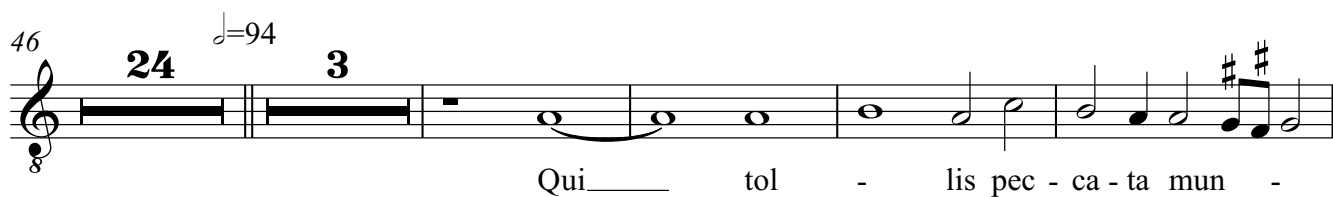
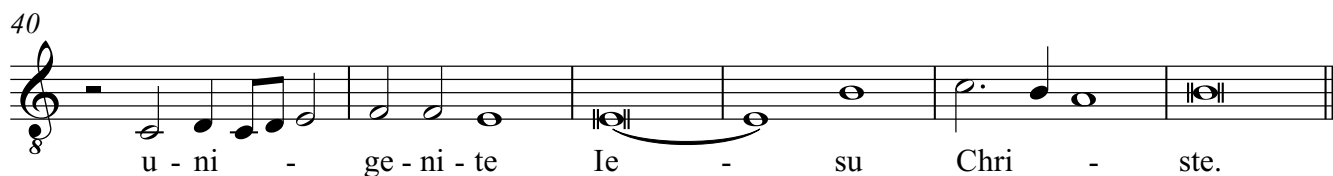
86
8 *1* **5** _____ Lau - da - mus te. Be - ne - di - ci - mus

10
8 te. _____ Ad - o - ra - mus te. Glo - ri - fi - ca -

15
8 **2** - mus te. Gra - ti - as a - gi - mus ti -

22
8 **2** bi pro - pter mag - nam glo - ri - am tu - am. Do - mi

29
8 ne De - us, Rex cae - le - stis, Do - mi - ne De - us, Rex cae - le -



100 $\text{♩} = 100$

8 Quo - ni - am tu so - lus san - ctus, Tu so -

106

8 lus al - tis - si - mus, Ie - su Chri - ste, Ie - su Chri -

112

8 ste. Cum San-cto Spi - ri - tu, cum San-cto Spi - ri - tu,

118

8 in glo - ri - a De - i Pa - tris, in glo - ri - a De - i Pa -

Credo

123

8 - - - tris. A - men. Pa - trem om -

8

8 ni - po - ten - - - tem, fac - to - rem ce - li - et ter - re,

13

8 vi - si - bi - li - um om - ni - um et in - vi - si - bi - li - um,

20

8 Fi - li - um De - i u - ni - ge - ni - tum, Fi - li - um De -

26

8 i u - ni - ge - - - ni - tum, Et ex Pa - tre na -

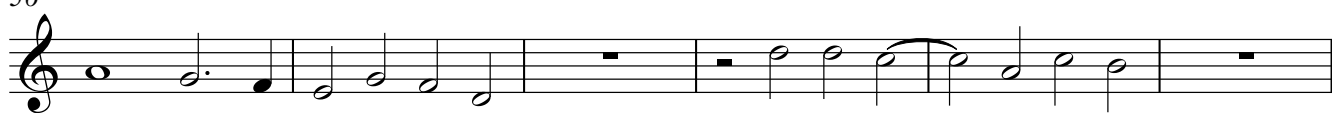
31

8 - tum an - te om - ni - a se - cu - la, lu - men de

37
8 
lu - mi - ne, De - um ve - rum de De - o ve - ro,


46
8 
Per quem om - ni - a fac - - - - ta sunt,

51
8 
Qui prop - ter nos ho - mi - nes, Qui prop - ter nos ho - mi - nes et prop - ter

56
8 
no - stram sa - lu - tem de - scen - dit de ce - lis,

62
8 
de - scen - dit de ce - lis, de - scen - dit de ce - lis.

68 $\text{♩} = 96$
8 
Et in - car - na - tus est de Spi - ri - tu San -

73
8 
- cto Ex Ma - ri - a vir - gi - ne, et

79
8 
ho - mo fac - tus est, et ho - mo fac - tus est.

85
8 
Cru - ci - fi - xus e - ti - am pro no - bis

92
8 
sub Pon - ti - o Pi - la - to,

97
8 sub Pon - ti - o Pi - la - - to, Pas - sus et

102
8 se - pul - tus est. Et re - sur - re - xit ter - ti - a di

107
8 e ter - ti - a di - e se - cun - dum scrip - tu - ras, Et ♩=100

113
8 as - cen - dit in ce - lum, se - det ad dex - te -

119
8 - ram Pa - - - tris. Et i - te - rum ven - tu - rus est cum

124
8 glo - ri - a iu - di - ca - re vi - vos et mor - tu - os, cu -

129
8 - ius re - gni non e - rit fi - - -

134
8 nis. Et in Spi - ri - tum San - ctum Do - mi - num et vi - vi - fi - can -

140
8 - tem, Qui ex Pa - ter Fi - li - o - que pro - ce - dit, Qui cum

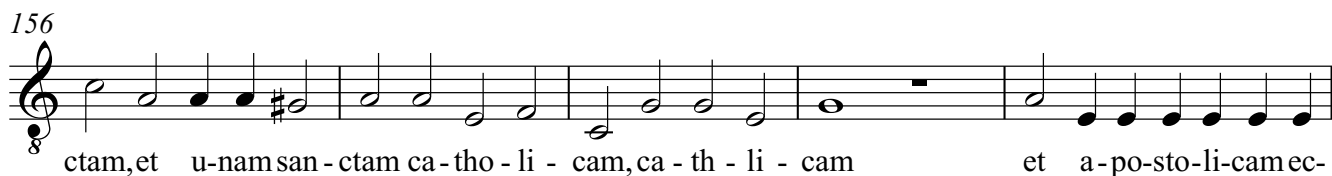
146
8 Pa - tre et Fi - li - o si - mul a - do - ra - tur et con - glo - fi - fi - ca - tur, et

151



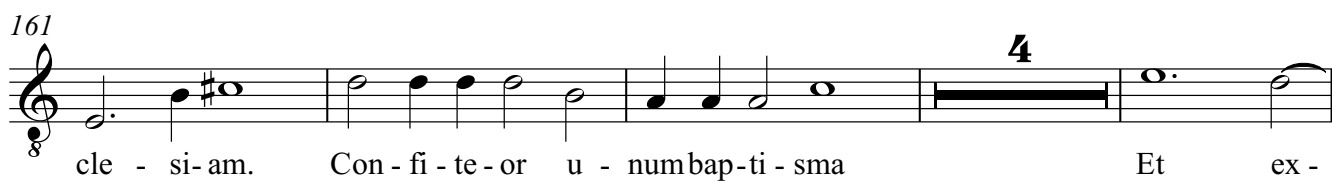
con-glo - ri - fi - ca - tur, Qui lo - cu - tus est per pro-phe - tas Et u-nam san -

156



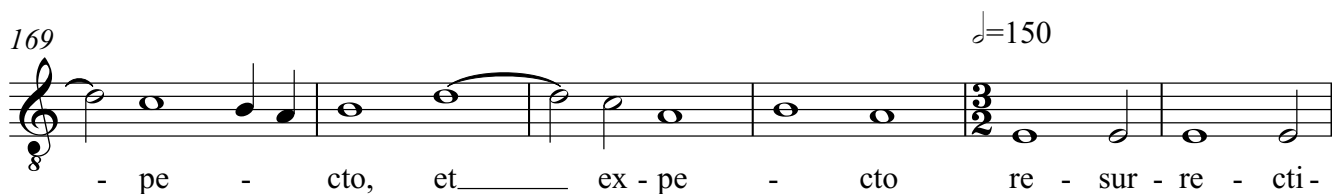
ctam, et u-nam san - ctam ca - tho - li - cam, ca - th - li - cam et a-po-sto-li-camec -

161



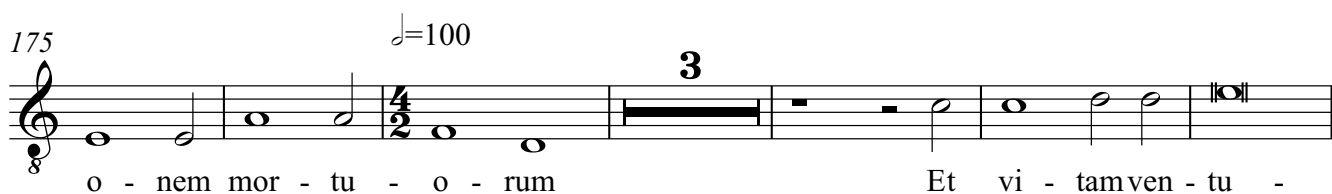
cle - si - am. Con - fi - te - or u - num bap - ti - sma Et ex -

169




- pe - cto, et ex - pe - cto re - sur - re - cti -

175



o - nem mor - tu - o - rum Et vi - tam ven - tu -

184



ri se - cu - li A - men, et vi -

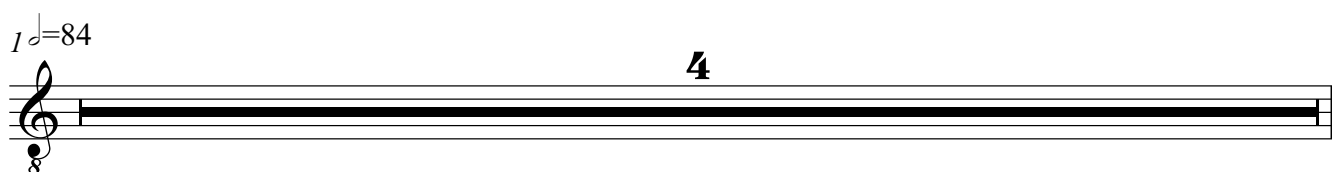
190



tam ven - tu - ri se - cu - li A - men.

Sanctus

1



tam ven - tu - ri se - cu - li A - men.

5
8
San - - - ctus, San - - -

10
8
ctus, San - - - ctus, San - ctus, Do

16
8
- mi-nus De - us Sa - ba - oth, Do - mi-nus De - us, Do - mi

21
8
nus De - us Sa - ba - oth. $\text{♩} = 90$
Ple - ni sunt ce - li et ter - ra,

27
8
2
ple - mi sunt ce - li et ter - ra glo - ri - a tu - a,

34
8
glo - ri - a tu - a, **Osanna** glo - ri - a tu - a.

41
8
 $\text{♩} = 120$
3
O - san - na in ex - cel - sis, o - san - na in ex -

50
8
 $\text{♩} = 90$
cel - sis, o - san - na in ex - cel - sis, in ex - cel - sis,

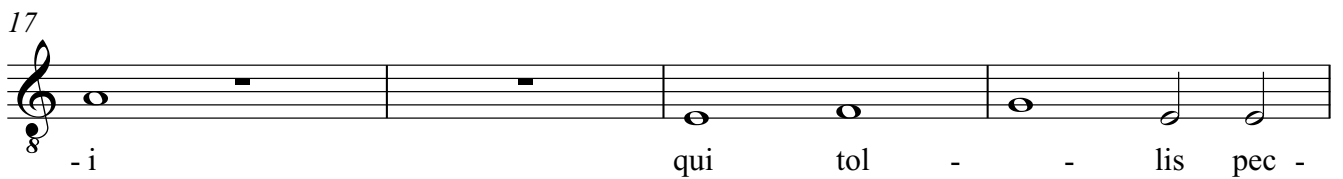
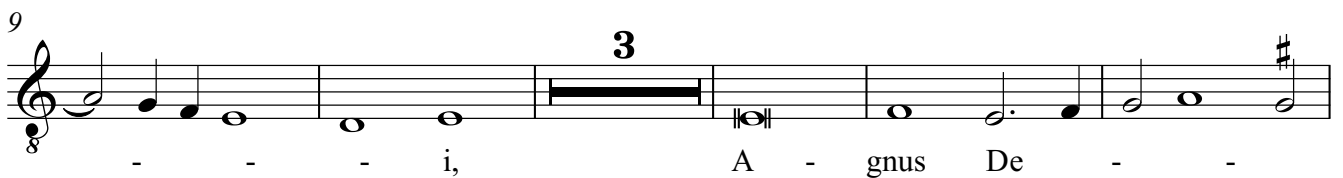
56
8
 $\text{♩} = 120$
2
o - san - na in ex - cel - sis,

61
8
 $\text{♩} = 90$
o - san - na in ex - cel - sis.

Benedictus

9

1 $\text{♩} = 100$



25

mi - se - re - re no - bis, mi - se - re - re no -

31

bis, mi - se - re - re no - bis, mi - se - re - re no - bis, mi -

36

- se - re - re no - bis, mi - se -

40

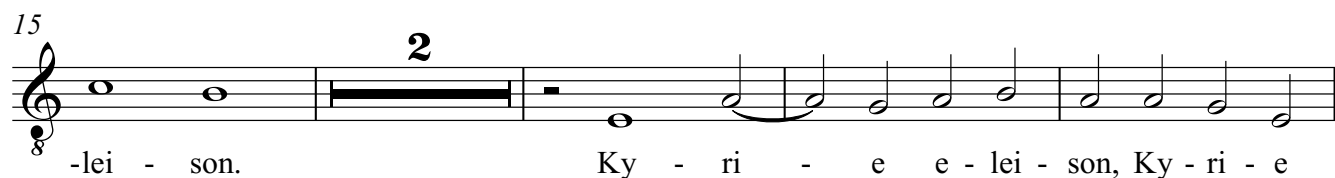
re - re no - bis, mi - se - re - re no - bis.

Tenor

Kyrie

Missa Quando Lieta Sperai

Andrea Gabrieli



44
8 Chri-ste e lei - son, Chri - ste e - lei - son, Chri-

49
8 ste e - lei - son. Chri - ste e - lei - son.

54
8 5 Ky - ri - e e - lei - son.

64
8 Ky - ri - e e - lei - son, Ky - ri - e e - lei - son, Ky-

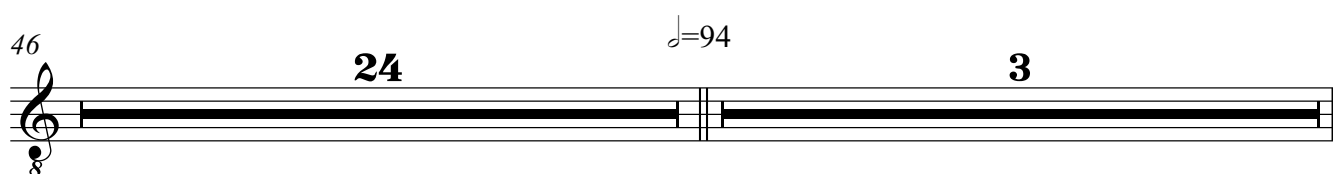
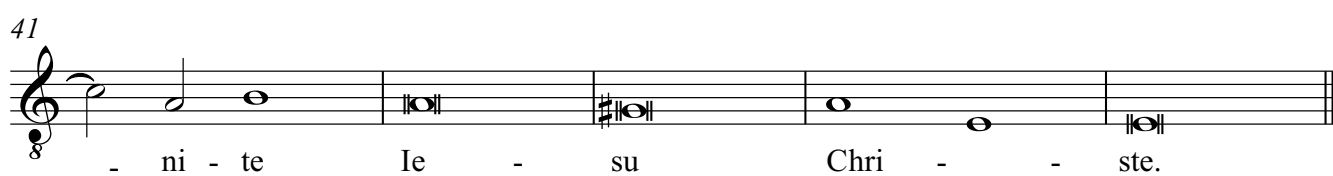
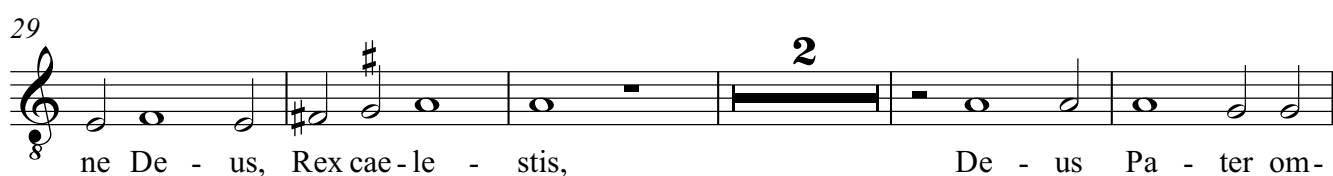
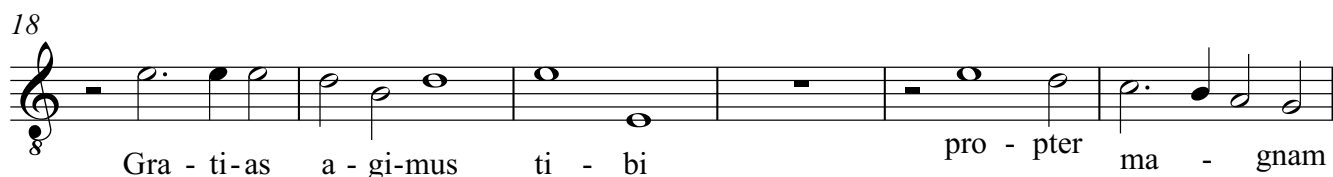
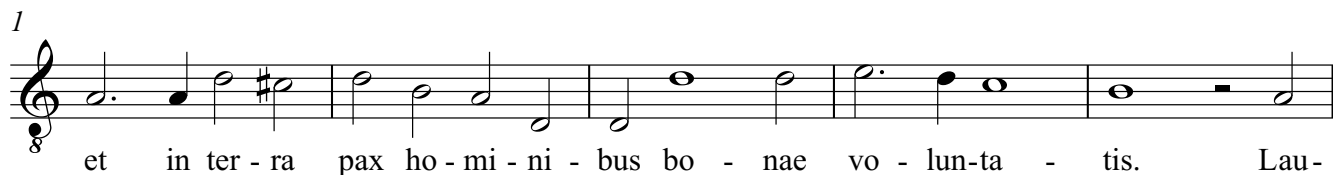
70
8 ri - ee-lei - son. Ky - ri - ee - lei - son. Ky - ri - e e -

76
8 - lei - son. Ky - ri - e e - lei-

81
8 - son. Ky - ri - e e - lei - son, Ky - ri - e e - lei - son.

Gloria

3



73
8 Qui tol - - lis pec - ca - ta mun - di,

78
8 mi - se - re - r no - bis. Qui tol - - - lis pec - ca - ta

83
8 mun - di sus - ci - pe de - pre - ca - ti - o - nem

89
8 no - stram. Qui se - des ad dex - te - ram Pa - tris mi - se - re - re

95
8 no - bis, mi - se - re - re no - bis. $\text{♩} = 100$

101
8 **2** Tu so - lus Do - mi - nus - - - tu so - lus al -

108
8 tis - si - mus, Ie - su Chri - ste, - - - Cum San - cto Spi - ri - tu cum

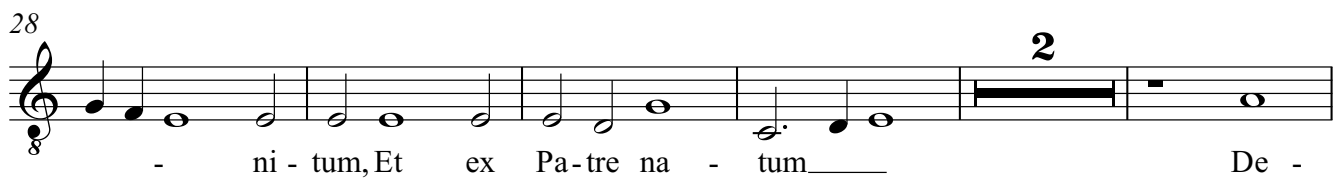
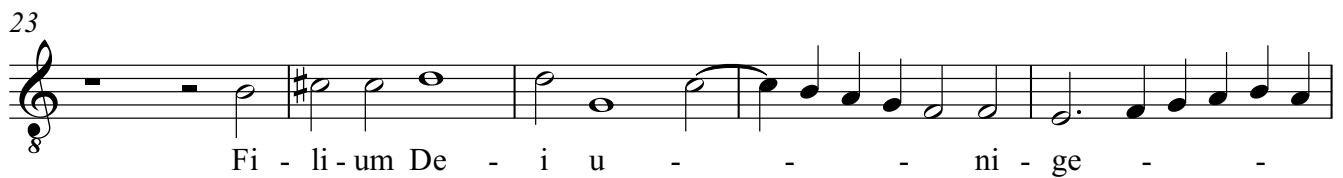
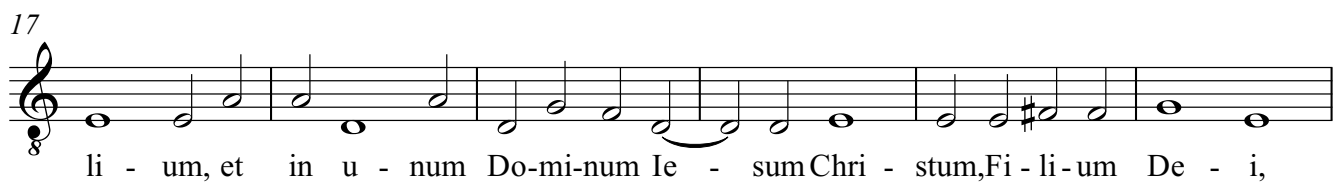
114
8 San - cto Spi - ri - tu in glo - ri - a De - i Pa -

119
8 - tris, in glo - ri - a De - i Pa -

123
8 tris. A - - - - men.

Credo

5



61
8 de-scen - dit de ce - lis, de - scen - dit de ce -

66
8 - - lis. Et in - car - na - tus est de

72
8 Spi - ri - tu San - - cto et ho -

80
8 mo fac - tus est, et ho - mo fac - tus est.

85
8 27 23 $\text{♩}=100$ Et in Spi - ri - tum San - ctum Do - mi - num et vi -

139
8 vi - fi - can - tem, Qui ex Pa - tre Fi - li - o - que pro - ce - dit,

144
8 Qui cum Pa - tre et Fi - li - o, Qui cum Pa - tre et Fi - li - o si - mul a - do - ra - tur

149
8 et con - glo - ri - fi - ca - tur, Qui lo - cu - tus est per pro - phe -

155
8 tas. Et u - nam san - ctam, et u - nam san - ctam ca - tho - li - cam, ca - th - li - cam et a - po - sto - li -

160
8 cam ec - cle - si - am. Con - fi - te - or u - num bap - ti - sma

3

167 $\text{♩} = 150$

Et ex - pe - cto re - sur - re - cti - o - nem

176 $\text{♩} = 100$

mor - tu - o - rum Et vi - tam ven - tu - ri,

182

et vi - tam ven - tu - ri se - cu - li A - men, se -

187

cu - li A - men et vi -

191

tam ven - tu - ri Sanctus cu - li A - men.

1 $\text{♩} = 84$

San - ctus, San -

9

- ctus, San - ctus, San -

14

- ctus, Do - mi-nus De-us Sa - ba -

20 $\text{♩} = 90$

oth, Do - mi-nus De-us Sa - ba - oth. Ple - ni sunt

25

ce - li et ter - ra, ple - ni-sunt ce - li et ter - ra, ple - ni sunt ce - li V.S.

Agnus Dei

9

1 $\text{♩} = 86$

5

8 A - - gnus De - - i, A - gnus

12

8 De - - - - i, A - gnus De - i

17

8 qui - - tol - lis pec - ca - ta mun - -

22

2

8 - di, mi - se - re - re no - bis, mi - se - re - re

29

8 no - - - - bis, mi - se - re - re no - bis,

34

8 mi - se - re - re no - bis, mi - se - re - re

39

8 no - bis, mi - se - re - re no - - - bis.

Bassus

Kyrie
Missa Quando Lieta Sperai

Andrea Gabrieli

$\text{♩} = 92$

4

4

 Ky - ri - e e - lei - son, Ky - ri - e e - lei -

10

son, Ky - ri - e e - lei - son, Ky - ri - e e - lei - son_____

16

2

2

Ky - ri - e e - lei - son, Ky - ri - ee - lei - son

22

— Ky - ri - e e - lei - son.

27

5

5

Chri - ste e - lei - son. Chri - ste

37

3

e - - lei - son. **3** Chri-ste e - lei - son,

45

Chri - ste e - lei - - - son.

1 G, making consecutive octaves with sextus.

50

Chri - - ste e - lei - son.

54

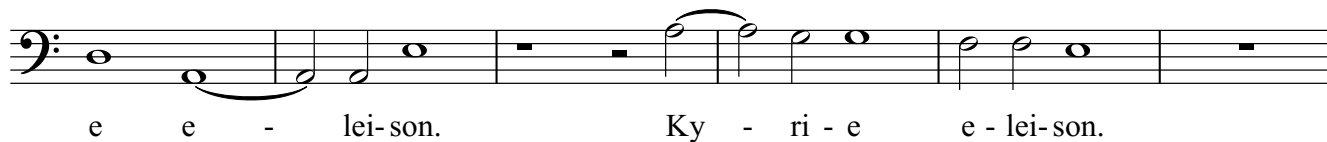
5

A blank musical staff with a bass clef. The staff consists of five horizontal lines. The bass clef is positioned at the beginning of the staff, with its hook pointing downwards. The staff is otherwise empty, with no notes or other markings.

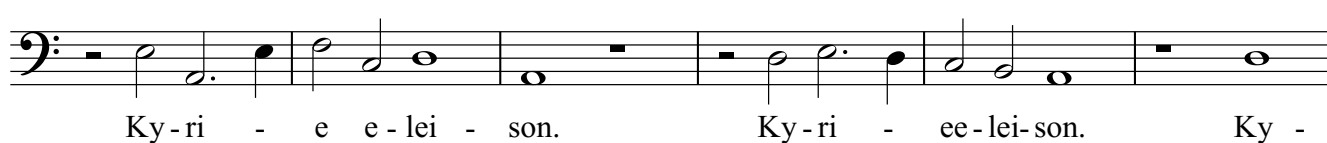
59



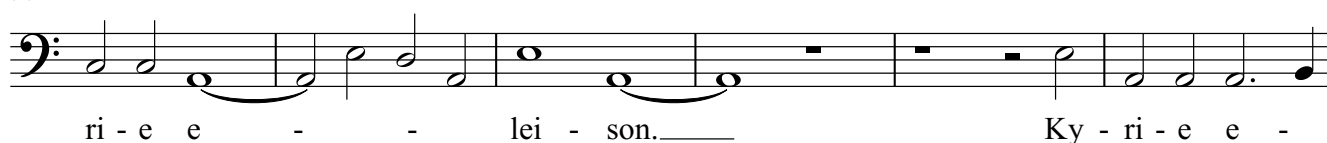
65



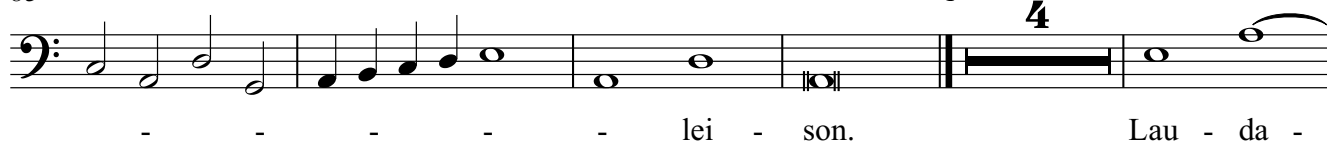
71



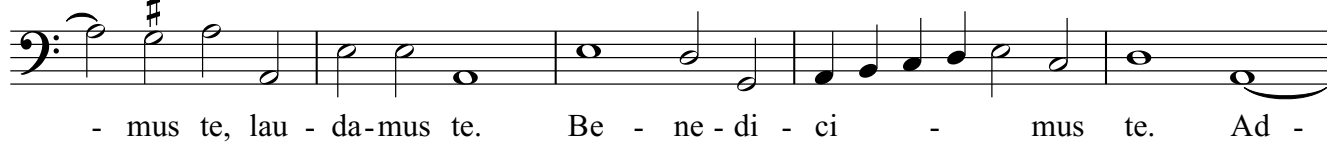
77



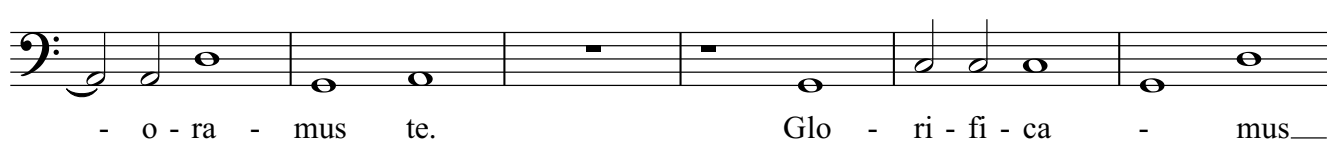
83



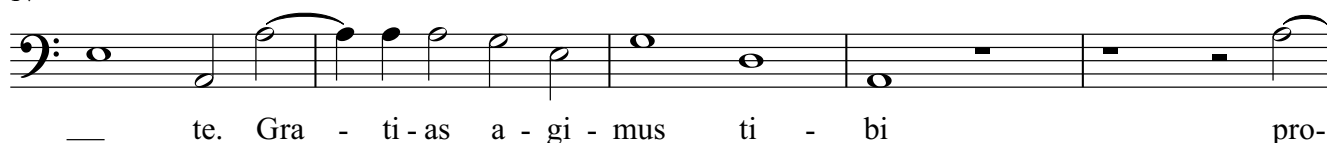
6



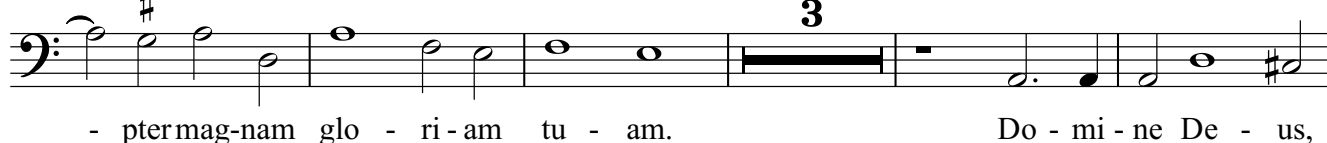
11



17



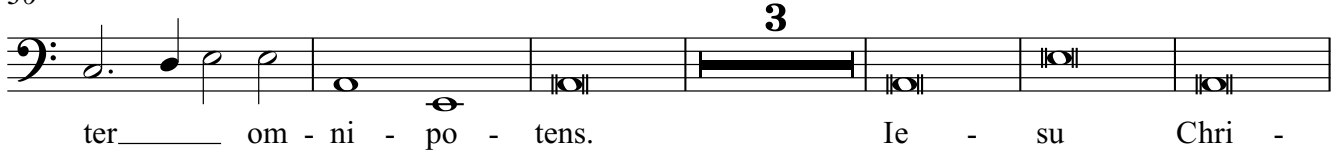
22



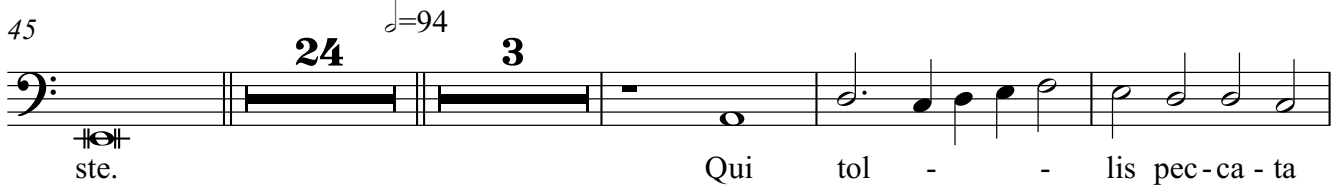
30



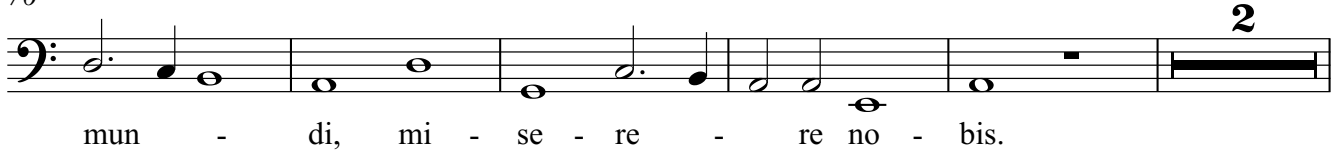
36



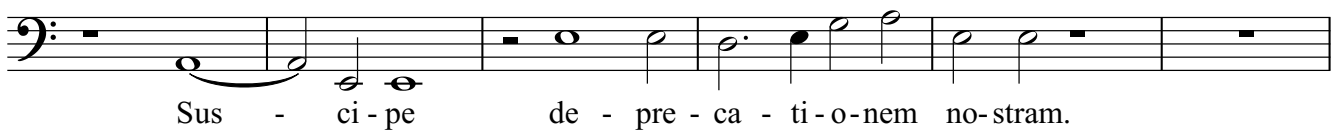
45



76



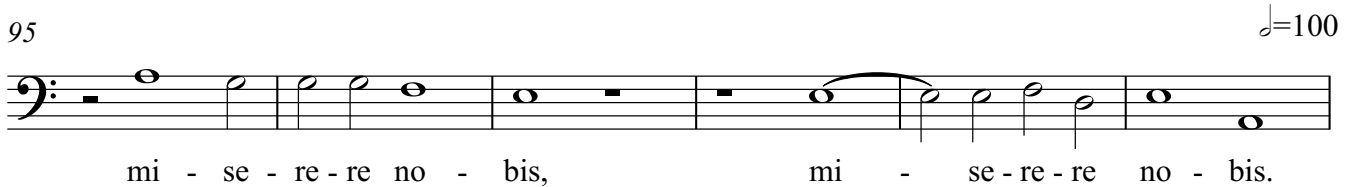
83



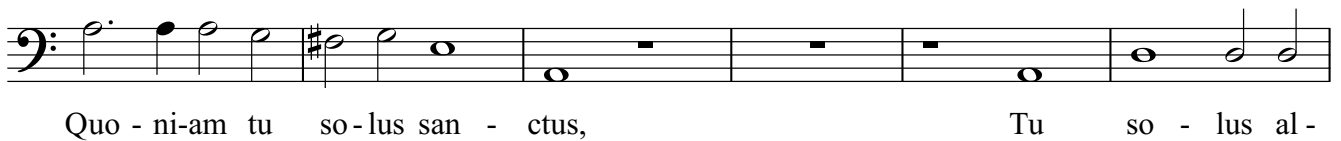
89



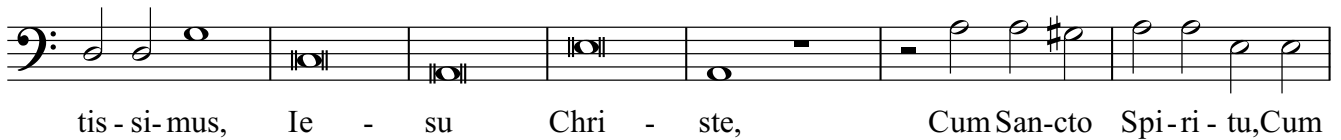
95



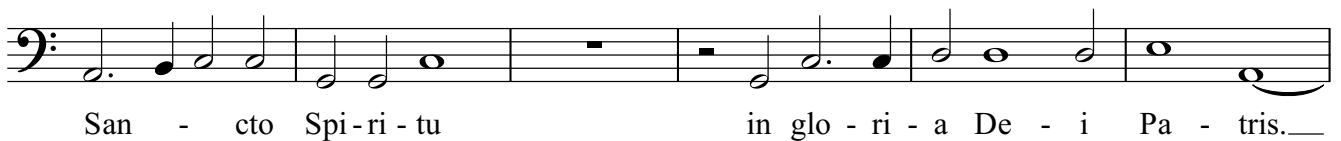
101



107



114



120



Credo

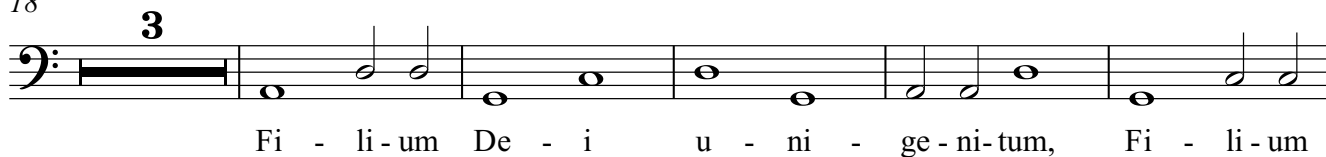
1



12



18



26



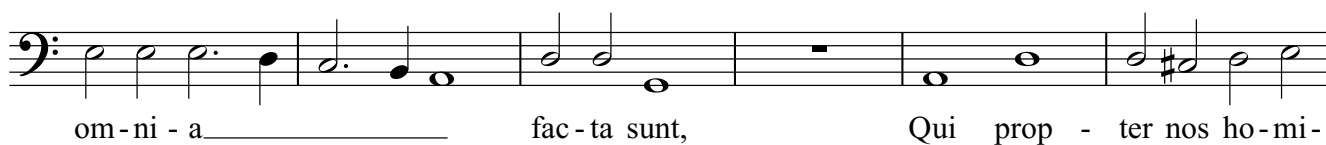
32



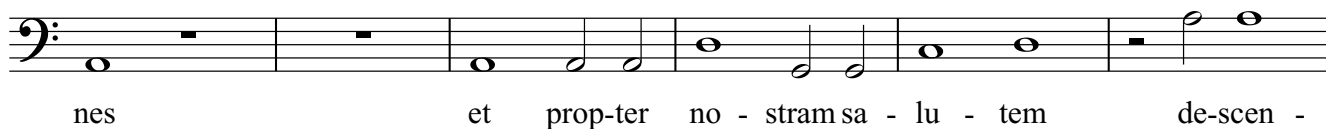
38



47



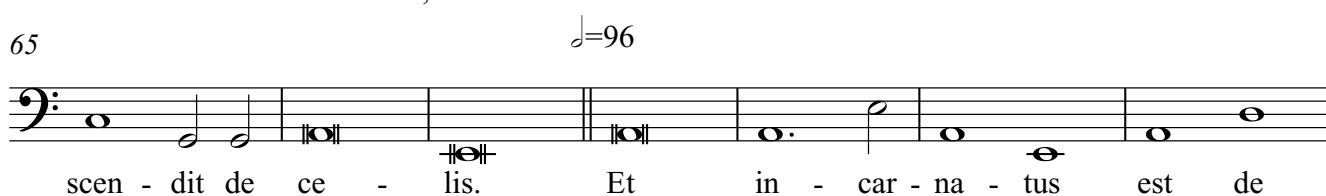
53



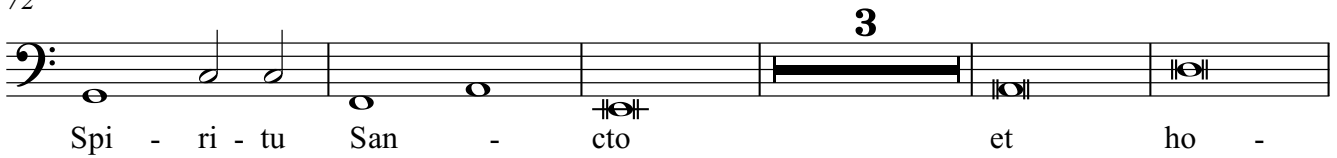
59



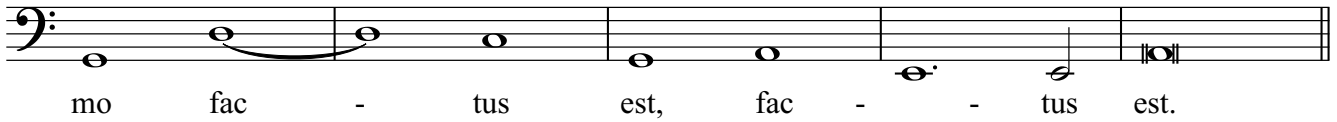
65



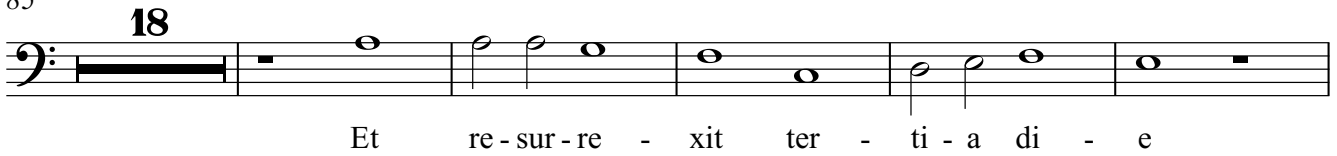
72



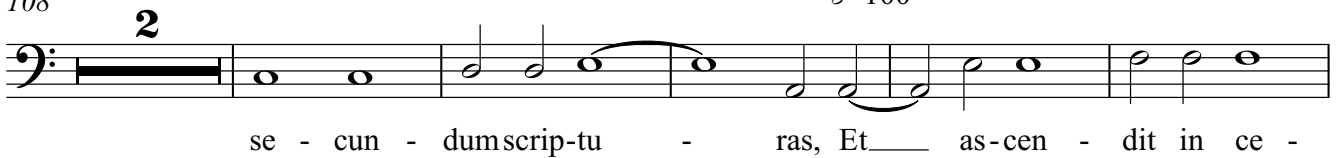
80



85



108



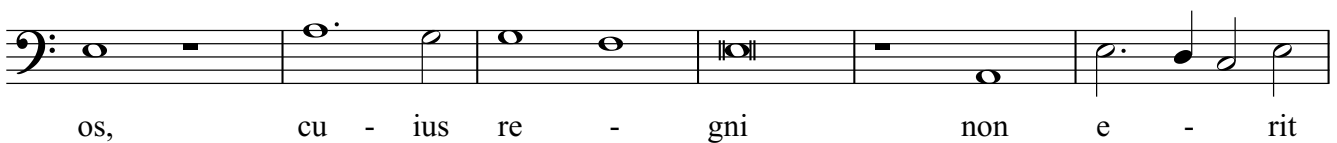
115



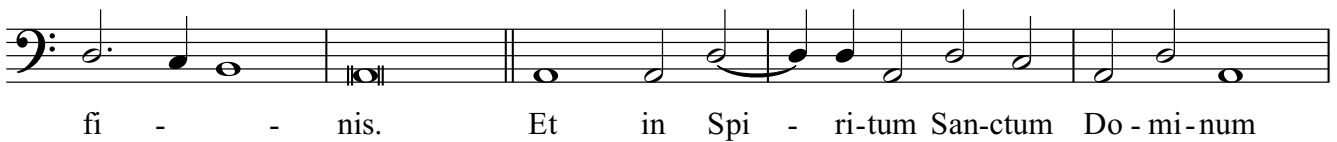
122



127



133



138



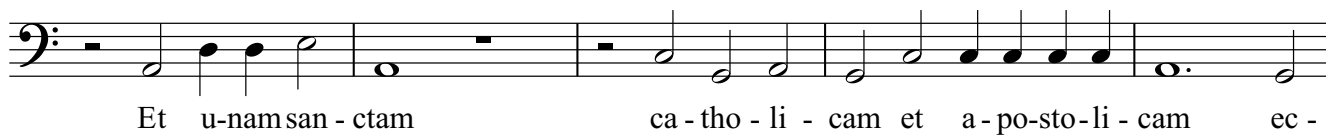
144



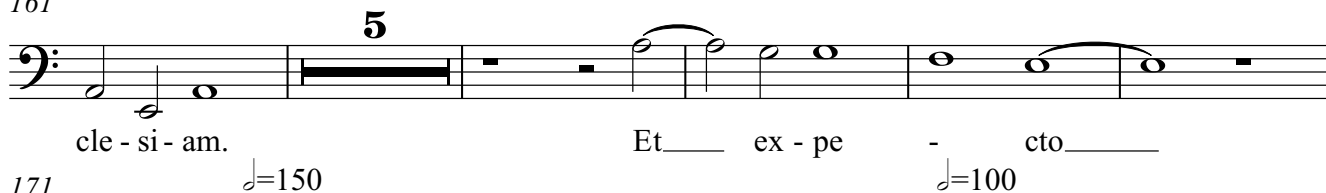
150



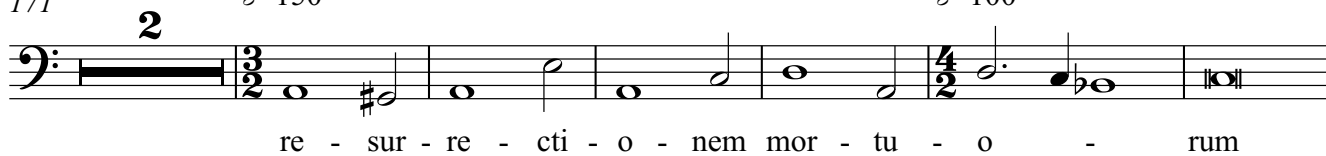
156



161



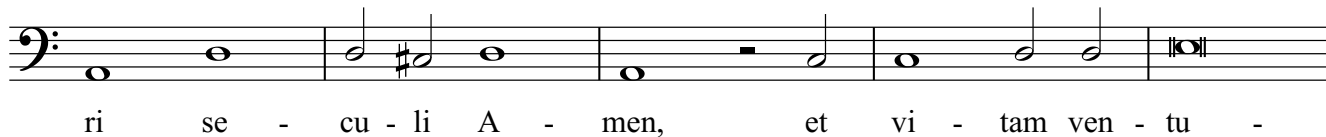
171



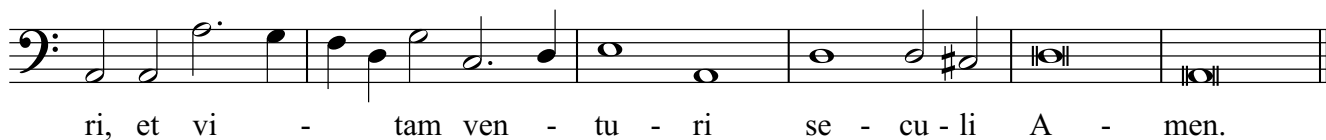
179



184



189



Sanctus

7

I $\mathcal{J}=84$

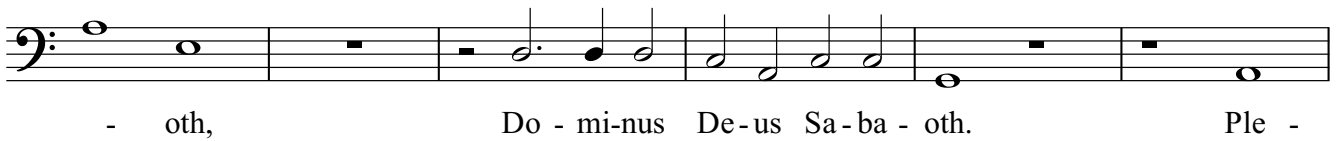
6



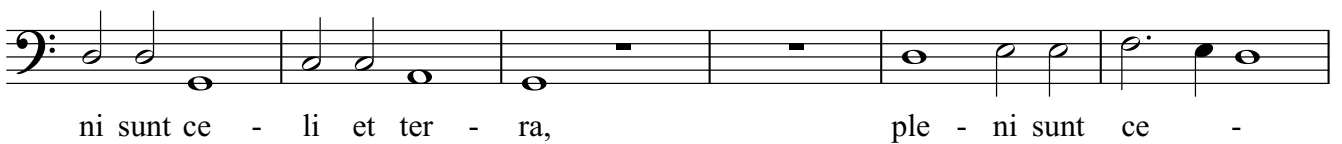
12



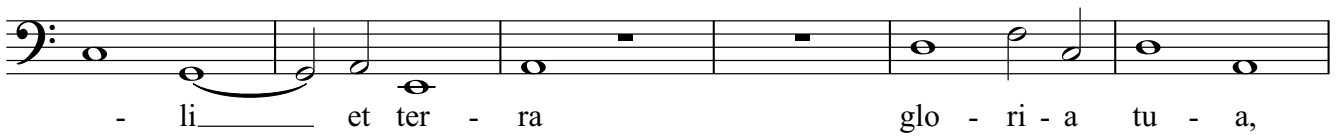
18



24 $\text{♩} = 90$

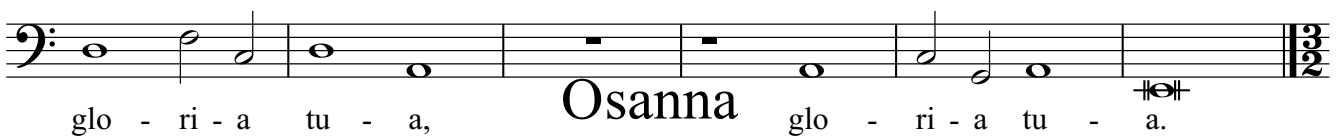


30



36

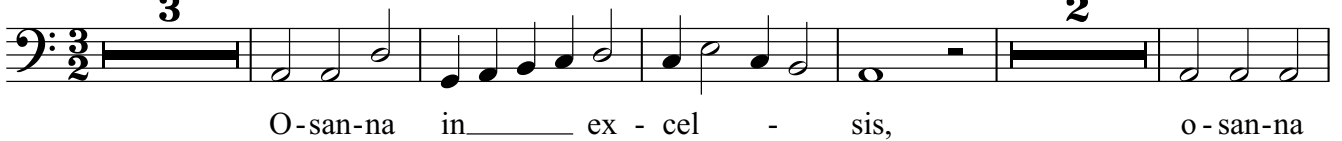
$\text{♩} = 120$



42

3

2



52

 $\mathcal{J}=90$ 

58

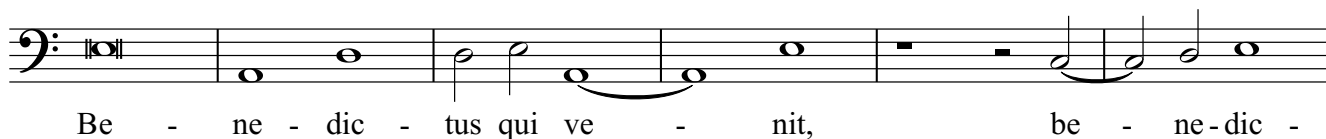
$\text{♩} = 120$



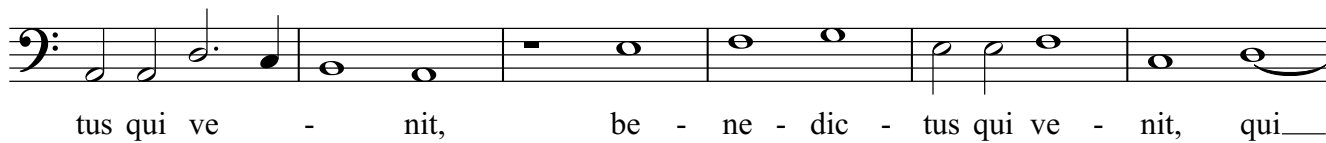
62

 $\mathcal{J}=90$ 

Benedictus

1 $\text{♩} = 100$ 

7



13



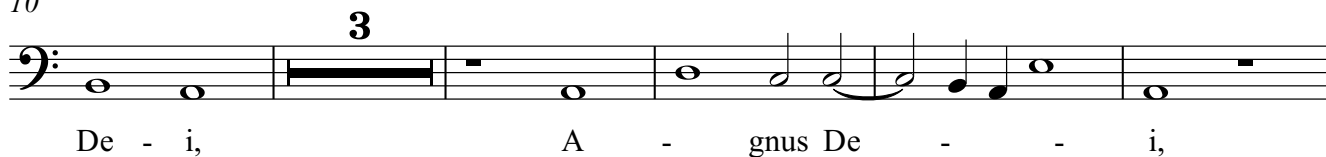
20



26



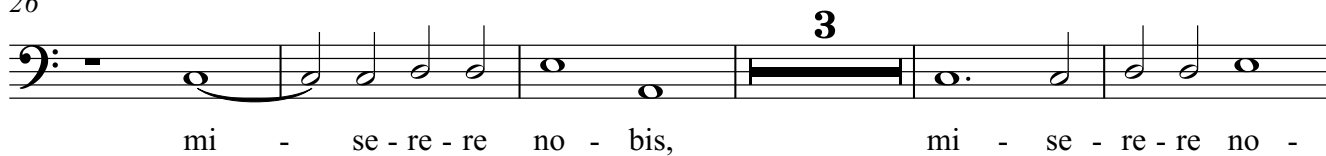
10



18



26



34



40



Agnus Dei