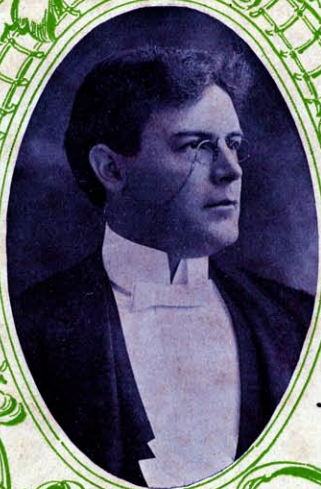


*Memorabilia*

350  
B49



WRITTEN FOR  
AND SUNG BY  
**BEN MCGAHEN**  
LATE OF  
CASTLE SQUARE  
GRAND OPERA  
COMPANY

**BECAUSE I AM  
YOUR FRIEND**

WORDS AND MUSIC  
BY **CARRIE JACOBS BOND**



5

CHICAGO:  
**C. J. BOND,**  
42-31st STREET.

JULES F. WEGMAN 1900



# BECAUSE I AM YOUR FRIEND.

CARRIE JACOBS-BOND.

*Moderato.*



Introduction for piano, marked *Moderato*. The music is in 2/4 time with a key signature of two flats (B-flat and E-flat). It begins with a piano (*p*) dynamic. The right hand features a melody of eighth and quarter notes, while the left hand provides a simple harmonic accompaniment.

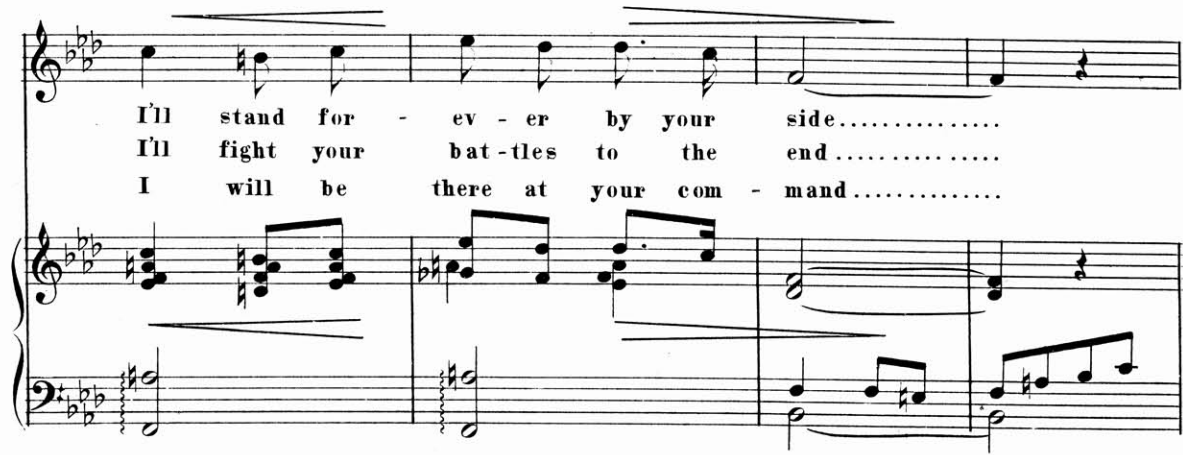


Vocal line and piano accompaniment for the first two verses. The vocal line starts with a piano (*p*) dynamic. The piano accompaniment continues with a steady accompaniment.

1. Through ev-ry ill that may be - tide .....

2. Be sure your honor I'll de - fend .....

3. Reach in the dark and find my hand .....



Vocal line and piano accompaniment for the final verse. The vocal line continues with the same melody. The piano accompaniment provides a consistent accompaniment.

I'll stand for - ev - er by your side .....

I'll fight your bat - tles to the end .....

I will be there at your com - mand .....

Will - ing and glad to be with you .....

I'll take your part, though you be wrong .....

Lay all your bur - dens at my feet .....

*rall.*

Prov - ing my friendship strong and true .....

And nev - er count the task too long .....

Try me, and make your faith com - plete .....

*rall.*

**REFRAIN.***Tempo di Valse.*

*p*

1.&2. Be - cause you are my friend .....

3. Be - cause I am your friend .....

On me you may de -

On me you may de -

*p*

- pend; I'll stand for - ev - er by your side, Because you

*rit.* *a tempo.*  
are my friend..... Dark days may come to you.....

Those whom you trust prove un - true..... Still on my love you

*ad lib.*  
may de - pend, Be-cause I am your friend.....