

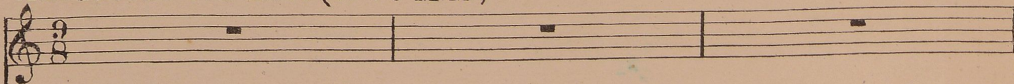
STARY PIES I STARY SŁUGA

(Ig: Krasickiego)

Muzyka Z. NOSKOWSKIEGO Op:1 N°1.

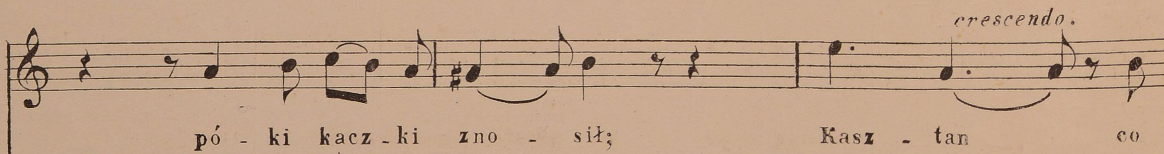
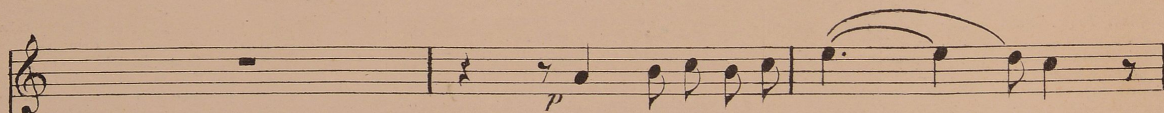
Andantino con moto (♩ = 72 M.M.)

SPIEW



Andantino con moto (♩ = 72 M.M.)

PIANO



© 2132 W

Дозволено Цензурою Варшавы 9 Февраля 1898г.

lit. Mękarski 40 Krak. Przedm. w Warszawie

1965 K 799/94



Mus. III. 87. 276

chciał, u pa-na swo - je - - go wy - pro - - - sił

p

dolcissimo

Ze - sta - rzał się; ze -

p *pp*

- sta - rzał się; az zo we - - go pańskie-go pieś - ci - dła

A

molto espressivo

mf Psi - - sko stare nie - zdat - - ne, od da - no do

mf di - mi - nu - en - do.

by di - mi - nu - en - dła.

p

pp pp p

Widząc że pies nie - bo - - rak

G 2132 W

Detailed description: This is a page of a musical score for voice and piano. The score is written in a key with one flat (B-flat major or D minor) and a 3/4 time signature. It consists of a vocal line and a piano accompaniment. The vocal line begins with the lyrics 'Psi - - sko stare nie - zdat - - ne, od da - no do' and continues with 'di - mi - nu - en - do.' and 'by di - mi - nu - en - dła.' The piano accompaniment features a variety of textures, including arpeggiated chords, flowing sixteenth-note passages, and sustained chords. Dynamic markings include *mf* (mezzo-forte), *p* (piano), and *pp* (pianissimo). The tempo/style marking is *molto espressivo*. The score is divided into systems, with the vocal line and piano accompaniment often on separate staves. The bottom of the page contains the publisher's information 'G 2132 W'.

ob - li - zu - je koś - ci, *mf* Ży - wił go

mf

sta - ry sza - faż, *cresc:* ży - wił go *f* sta - ry sza - faż

cres - cen - do. *f*

p nie - gdyś pod - sta - roś -

p

- ci.

pp *p* *pp*

Red. * *Red.* G 2132 W * *Red.* * *Red.*

