

Canzoni Canto No 1

arr. Hans Jorgen Messerschmidt

Girolamo Frescobaldi (1583-1643)

Andante (♩=88)

Euphonium



6



12



18



Adagio (♩=69)

24

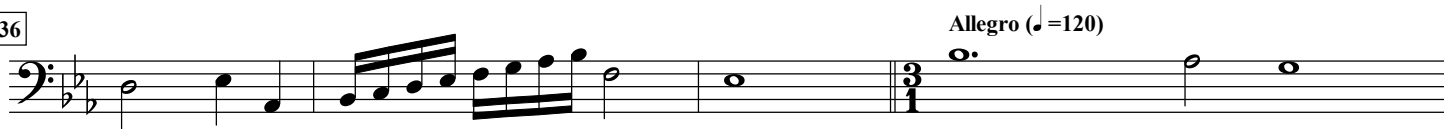


Allegro (♩=120)

30

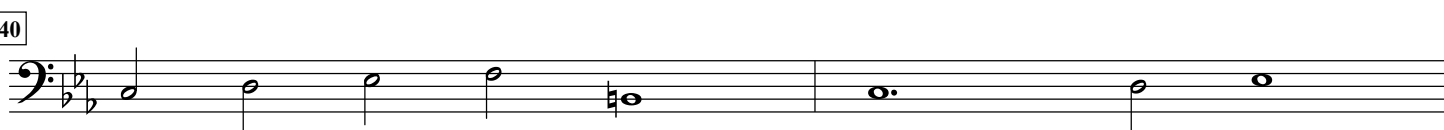


36

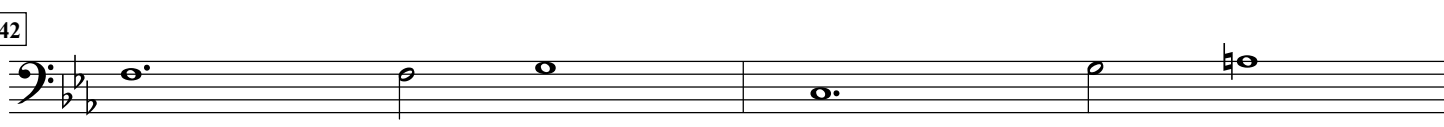


Allegro (♩=120)

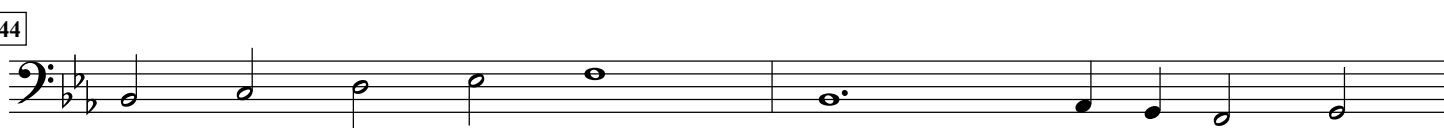
40



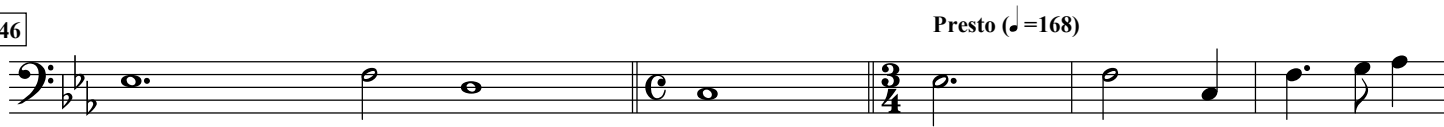
42



44



46



Presto (♩=168)

51

Euphonium

51 52 53 54 55 56 57

58

Adagio (♩=66)

58 59 60 61 62 63 64

65

Allegro (♩=120)

65 66 67 68 69

70

70 71 72 73 74 75

76

76 77 78 79 80 81

82

82 83

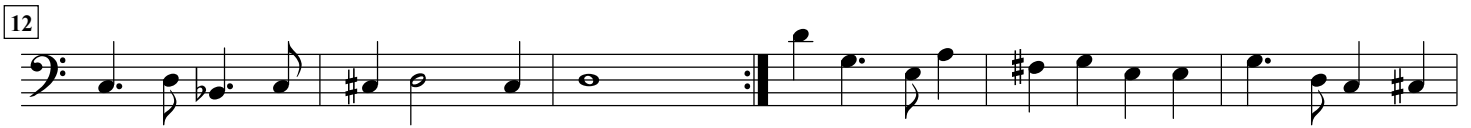
Canzoni Canto No 2

arr. Hans Jorgen Messerschmidt

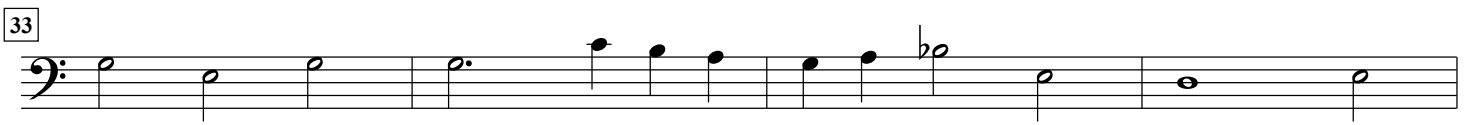
Girolamo Frescobaldi (1583-1643)

Allegro (♩=120)

Euphonium

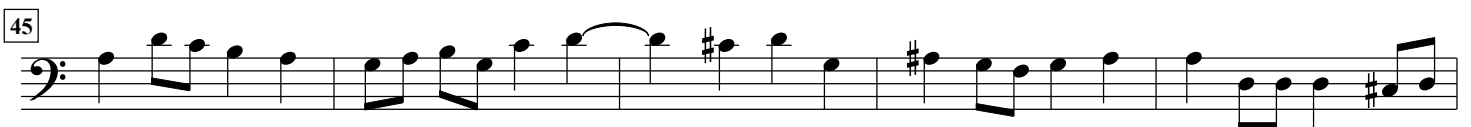


Allegro (♩=120)



Adagio (♩=66)

Allegro (♩=120)



56

Euphonium




61



66

Allegro (♩=120)



70



74



78

Adagio (♩=66)

Allegro (♩=120)



83



88



93



Canzoni Canto N 3

arr. Hans Jorgen Messerschmidt

Girolamo Frescobaldi (1583-1643)

Allegro (♩=120)

Euphonium



6

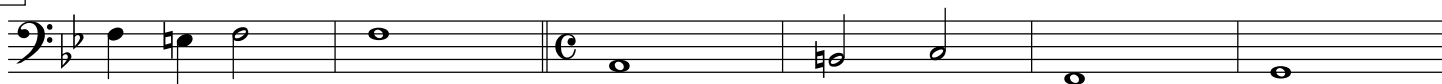


11



16

Adagio (♩=66)



22

Allegro (♩=124)



27



32

Adagio (♩=70)



37

Allegro (♩=120)



41



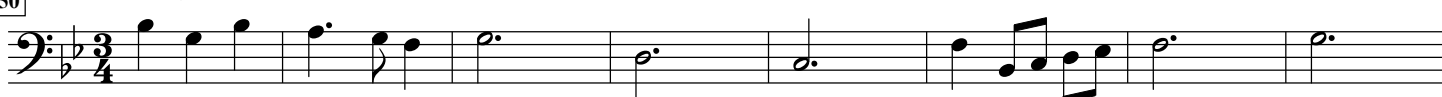
45

Adagio (♩=66)



50

Allegro (♩=120)



58 Euphonium



65 Adagio (♩=66)




72



77 Allegro (♩=120)



82



88



94



99



105



Canzoni Canto No 4

arr. Hans Jorgen Messerschmidt

Girolamo Frescobaldi (1583-1643)

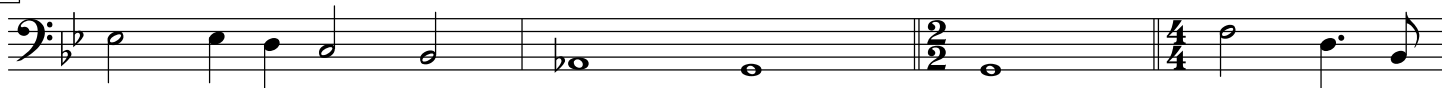
Adagio (♩=66)

Euphonium



4

Allegro (♩=120)



8



14



20

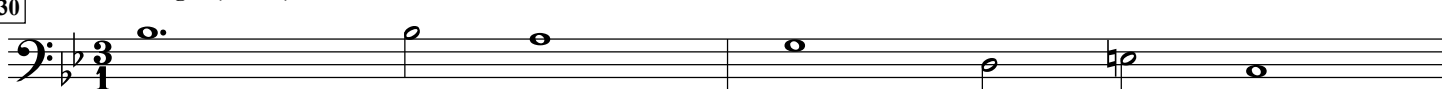


26

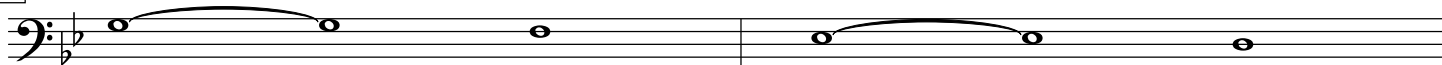


30

Allegro (♩=120)



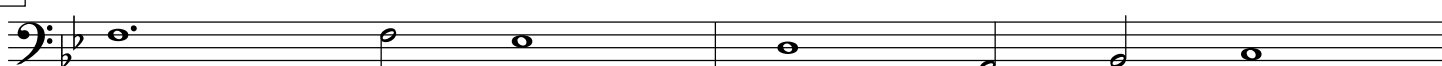
32



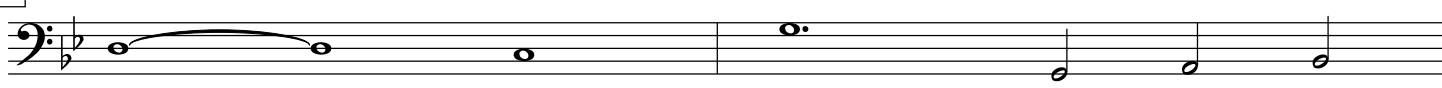
34



36



38



40

Euphonium

The image shows a musical score for Euphonium, measures 40 and 41. The staff is in bass clef with a key signature of one flat (B-flat). Measure 40 contains three half notes: B-flat (first line), D-flat (second line), and E-flat (third line). Measure 41 contains three half notes: F (third space), G (fourth space), and A (first line). The notes are connected by a single horizontal line across the bar line.

42 Adagio (♩ = 70)



The musical score for Example 42 is written in bass clef with a key signature of one flat (B-flat). It begins with a whole note chord of B-flat and D. This is followed by a half note chord of B-flat and D, then a half note chord of B-flat and D. The piece concludes with a whole note chord of B-flat and D.

46 Allegro (♩=120)

Example 46

[illegible]

57

62 **Allegro - Euphonium solo** (♩=120)

62 **Allegro - Euphonium solo** (♩=120)

66

Exercise 66 is a short piece in bass clef, 3/4 time. It consists of two measures of eighth notes followed by a whole rest. The notes are G₂, A₂, B₂, C₃, D₃, E₃, F₃, G₃.

[illegible]

71

73

Musical notation for exercise 73: A bass clef with a key signature of one flat (B-flat). The melody consists of two measures. The first measure contains a half note B-flat, a quarter note A, a quarter note G, a quarter note F, and a half note E. The second measure contains a half note D, a quarter note C, a quarter note B, a quarter note A, and a half note G.

75

Musical notation for exercise 75, featuring a bass clef, a key signature of one flat (B-flat), and a melody consisting of eighth notes followed by a whole note.

77

Exercise 77 is a short piece in bass clef, G major, 4/4 time. It begins with a series of eighth notes: G2, A2, B2, C3, D3, E3, F#3, and G3. This is followed by a whole note G3, and then a whole rest.

80

Euphonium

The image shows a musical score for the Euphonium part, measures 80 and 81. The key signature is one flat (B-flat), and the time signature is 4/4. The staff is a bass clef. Measure 80 contains six half notes: B-flat, A, G, F, E, and D. Measure 81 contains six half notes: C, B-flat, A, G, F, and E.


82

82

84

84

Bass clef, one sharp (F#). The melody consists of eighth notes: G2, F#2, E2, D2, C2, B1, A1, G1. The final measure contains a whole note G1 and a whole rest.

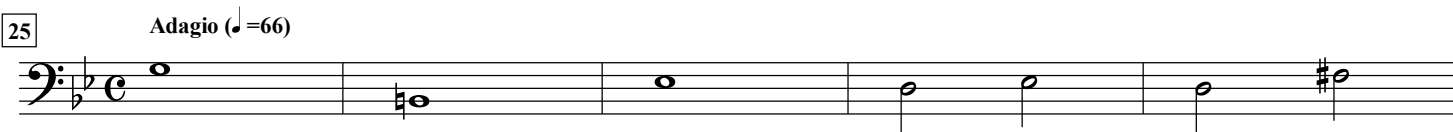
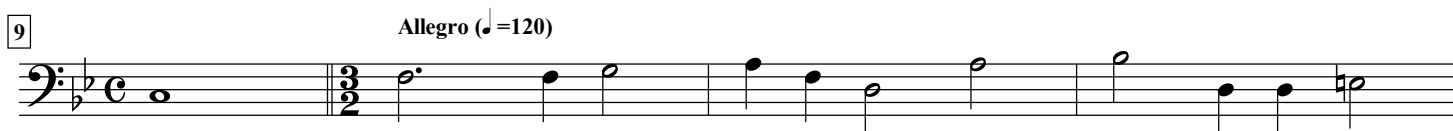
86  Allegro (♩=120)

[illegible][illegible]

Canzoni Canto No 5

arr. Hans Jorgen Messerschmidt

Girolamo Frescobaldi (1583-1643)



Allegro (♩=120)



Allegro (♩=120)

Musical notation for the bass line of 'The Rose Tree'. The key signature is one flat (B-flat), and the time signature is 4/4. The melody consists of the following notes: G2, A2, Bb2, A2, G2, F2, E2, D2, C2, Bb1, A1, G1, F1, E1, D1, C1, Bb0, A0, G0, F0, E0, D0, C0, Bb-1, A-1, G-1, F-1, E-1, D-1, C-1, Bb-2, A-2, G-2, F-2, E-2, D-2, C-2, Bb-3, A-3, G-3, F-3, E-3, D-3, C-3, Bb-4, A-4, G-4, F-4, E-4, D-4, C-4, Bb-5, A-5, G-5, F-5, E-5, D-5, C-5, Bb-6, A-6, G-6, F-6, E-6, D-6, C-6, Bb-7, A-7, G-7, F-7, E-7, D-7, C-7, Bb-8, A-8, G-8, F-8, E-8, D-8, C-8, Bb-9, A-9, G-9, F-9, E-9, D-9, C-9, Bb-10, A-10, G-10, F-10, E-10, D-10, C-10, Bb-11, A-11, G-11, F-11, E-11, D-11, C-11, Bb-12, A-12, G-12, F-12, E-12, D-12, C-12, Bb-13, A-13, G-13, F-13, E-13, D-13, C-13, Bb-14, A-14, G-14, F-14, E-14, D-14, C-14, Bb-15, A-15, G-15, F-15, E-15, D-15, C-15, Bb-16, A-16, G-16, F-16, E-16, D-16, C-16, Bb-17, A-17, G-17, F-17, E-17, D-17, C-17, Bb-18, A-18, G-18, F-18, E-18, D-18, C-18, Bb-19, A-19, G-19, F-19, E-19, D-19, C-19, Bb-20, A-20, G-20, F-20, E-20, D-20, C-20, Bb-21, A-21, G-21, F-21, E-21, D-21, C-21, Bb-22, A-22, G-22, F-22, E-22, D-22, C-22, Bb-23, A-23, G-23, F-23, E-23, D-23, C-23, Bb-24, A-24, G-24, F-24, E-24, D-24, C-24, Bb-25, A-25, G-25, F-25, E-25, D-25, C-25, Bb-26, A-26, G-26, F-26, E-26, D-26, C-26, Bb-27, A-27, G-27, F-27, E-27, D-27, C-27, Bb-28, A-28, G-28, F-28, E-28, D-28, C-28, Bb-29, A-29, G-29, F-29, E-29, D-29, C-29, Bb-30, A-30, G-30, F-30, E-30, D-30, C-30, Bb-31, A-31, G-31, F-31, E-31, D-31, C-31, Bb-32, A-32, G-32, F-32, E-32, D-32, C-32, Bb-33, A-33, G-33, F-33, E-33, D-33, C-33, Bb-34, A-34, G-34, F-34, E-34, D-34, C-34, Bb-35, A-35, G-35, F-35, E-35, D-35, C-35, Bb-36, A-36, G-36, F-36, E-36, D-36, C-36, Bb-37, A-37, G-37, F-37, E-37, D-37, C-37, Bb-38, A-38, G-38, F-38, E-38, D-38, C-38, Bb-39, A-39, G-39, F-39, E-39, D-39, C-39, Bb-40, A-40, G-40, F-40, E-40, D-40, C-40, Bb-41, A-41, G-41, F-41, E-41, D-41, C-41, Bb-42, A-42, G-42, F-42, E-42, D-42, C-42, Bb-43, A-43, G-43, F-43, E-43, D-43, C-43, Bb-44, A-44, G-44, F-44, E-44, D-44, C-44, Bb-45, A-45, G-45, F-45, E-45, D-45, C-45, Bb-46, A-46, G-46, F-46, E-46, D-46, C-46, Bb-47, A-47, G-47, F-47, E-47, D-47, C-47, Bb-48, A-48, G-48, F-48, E-48, D-48, C-48, Bb-49, A-49, G-49, F-49, E-49, D-49, C-49, Bb-50, A-50, G-50, F-50, E-50, D-50, C-50, Bb-51, A-51, G-51, F-51, E-51, D-51, C-51, Bb-52, A-52, G-52, F-52, E-52, D-52, C-52, Bb-53, A-53, G-53, F-53, E-53, D-53, C-53, Bb-54, A-54, G-54, F-54, E-54, D-54, C-54, Bb-55, A-55, G-55, F-55, E-55, D-55, C-55, Bb-56, A-56, G-56, F-56, E-56, D-56, C-56, Bb-57, A-57, G-57, F-57, E-57, D-57, C-57, Bb-58, A-58, G-58, F-58, E-58, D-58, C-58, Bb-59, A-59, G-59, F-59, E-59, D-59, C-59, Bb-60, A-60, G-60, F-60, E-60, D-60, C-60, Bb-61, A-61, G-61, F-61, E-61, D-61, C-61, Bb-62, A-62, G-62, F-62, E-62, D-62, C-62, Bb-63, A-63, G-63, F-63, E-63, D-63, C-63, Bb-64, A-64, G-64, F-64, E-64, D-64, C-64, Bb-65, A-65, G-65, F-65, E-65, D-65, C-65, Bb-66, A-66, G-66, F-66, E-66, D-66, C-66, Bb-67, A-67, G-67, F-67, E-67, D-67, C-67, Bb-68, A-68, G-68, F-68, E-68, D-68, C-68, Bb-69, A-69, G-69, F-69, E-69, D-69, C-69, Bb-70, A-70, G-70, F-70, E-70, D-70, C-70, Bb-71, A-71, G-71, F-71, E-71, D-71, C-71, Bb-72, A-72, G-72, F-72, E-72, D-72, C-72, Bb-73, A-73, G-73, F-73, E-73, D-73, C-73, Bb-74, A-74, G-74, F-74, E-74, D-74, C-74, Bb-75, A-75, G-75, F-75, E-75, D-75, C-75, Bb-76, A-76, G-76, F-76, E-76, D-76, C-76, Bb-77, A-77, G-77, F-77, E-77, D-77, C-77, Bb-78, A-78, G-78, F-78, E-78, D-78, C-78, Bb-79, A-79, G-79, F-79, E-79, D-79, C-79, Bb-80, A-80, G-80, F-80, E-80, D-80, C-80, Bb-81, A-81, G-81, F-81, E-81, D-81, C-81, Bb-82, A-82, G-82, F-82, E-82, D-82, C-82, Bb-83, A-83, G-83, F-83, E-83, D-83, C-83, Bb-84, A-84, G-84, F-84, E-84, D-84, C-84, Bb-85, A-85, G-85, F-85, E-85, D-85, C-85, Bb-86, A-86, G-86, F-86, E-86, D-86, C-86, Bb-87, A-87, G-87, F-87, E-87, D-87, C-87, Bb-88, A-88, G-88, F-88, E-88, D-88, C-88, Bb-89, A-89, G-89, F-89, E-89, D-89, C-89, Bb-90, A-90, G-90, F-90, E-90, D-90, C-90, Bb-91, A-91, G-91, F-91, E-91, D-91, C-91, Bb-92, A-92, G-92, F-92, E-92, D-92, C-92, Bb-93, A-93, G-93, F-93, E-93, D-93, C-93, Bb-94, A-94, G-94, F-94, E-94, D-94, C-94, Bb-95, A-95, G-95, F-95, E-95, D-95, C-95, Bb-96, A-96, G-96, F-96, E-96, D-96, C-96, Bb-97, A-97, G-97, F-97, E-97, D-97, C-97, Bb-98, A-98, G-98, F-98, E-98, D-98, C-98, Bb-99, A-99, G-99, F-99, E-99, D-99, C-99, Bb-100, A-100, G-100, F-100, E-100, D-100, C-100, Bb-101, A-101, G-101, F-101, E-101, D-101, C-101, Bb-102, A-102, G-102, F-102, E-102, D-102, C-102, Bb-103, A-103, G-103, F-103, E-103, D-103, C-103, Bb-104, A-104, G-104, F-104, E-104, D-104, C-104, Bb-105, A-105, G-105, F-105, E-105, D-105, C-105, Bb-106, A-106, G-106, F-106, E-106, D-106, C-106, Bb-107, A-107, G-107, F-107, E-107, D-107, C-107, Bb-108, A-108, G-108, F-108, E-108, D-108, C-108, Bb-109, A-109, G-109, F-109, E-109, D-109, C-109, Bb-110, A-110, G-110, F-110, E-110,

The bass line of 'The Rose Tree' is written on a single staff in bass clef with a key signature of one flat (B-flat). The melody consists of the following notes: G2 (quarter), A2 (quarter), B-flat2 (quarter), A2 (quarter), G2 (quarter), F2 (half), E2 (half), D2 (half), C2 (half), B-flat2 (quarter), A2 (quarter), G2 (quarter), F2 (half), E2 (half), D2 (half), C2 (half). The notes are grouped into measures: G2 A2 B-flat2 A2 G2 | F2 E2 D2 C2 | B-flat2 A2 G2 F2 | E2 D2 C2 B-flat2 | A2 G2 F2 E2 | D2 C2 B-flat2 A2 | G2 F2 E2 D2 | C2 B-flat2 A2 G2.

65