

Keyboard Sonata in C major

Joseph Siegmund Bachmann 1754-1825

Fuga (♩ = 120.)

f

7

12

17

22

26

31

The musical score for measures 31-34 of 'The Swan' by Camille Saint-Saëns. The score is in 3/4 time, key of D major, and features a piano accompaniment. The melody is in the right hand, and the bass line is in the left hand. The music is characterized by a gentle, flowing melody and a simple harmonic accompaniment.

36

The musical score for measures 36-39 is written for piano. The right hand (treble clef) plays chords and eighth-note patterns, while the left hand (bass clef) plays a continuous eighth-note accompaniment. The key signature has two flats (B-flat major), and the time signature is 2/4. Measure 36 starts with a B-flat chord in the right hand and a descending eighth-note line in the left hand. Measure 37 continues the eighth-note line in the left hand with a B-flat chord in the right hand. Measure 38 features a B-flat chord in the right hand and a descending eighth-note line in the left hand. Measure 39 ends with a B-flat chord in the right hand and a descending eighth-note line in the left hand.

40

p

f

44

p *f*

48

49

50

51

53

58

63

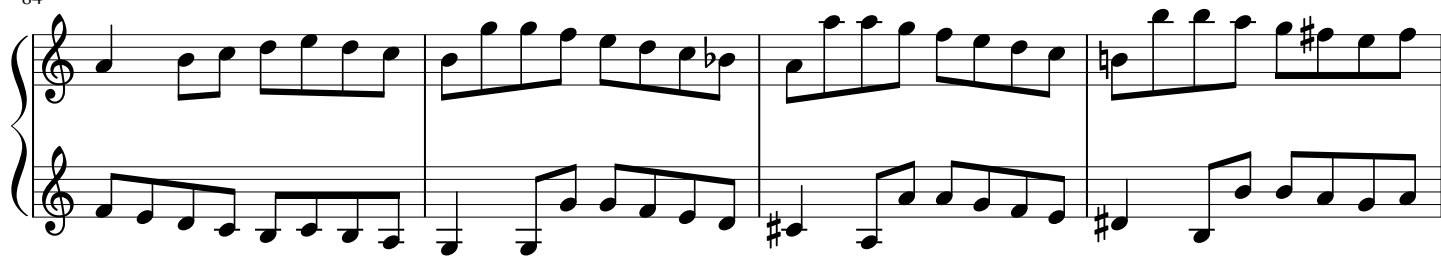
67

72

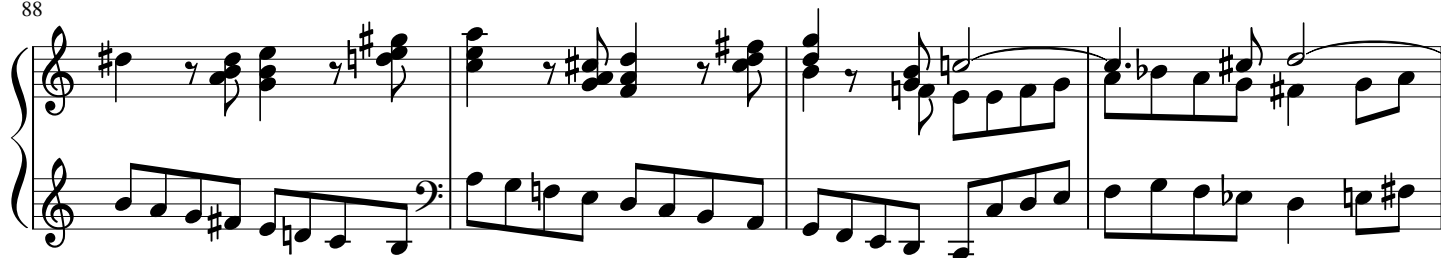
77

80

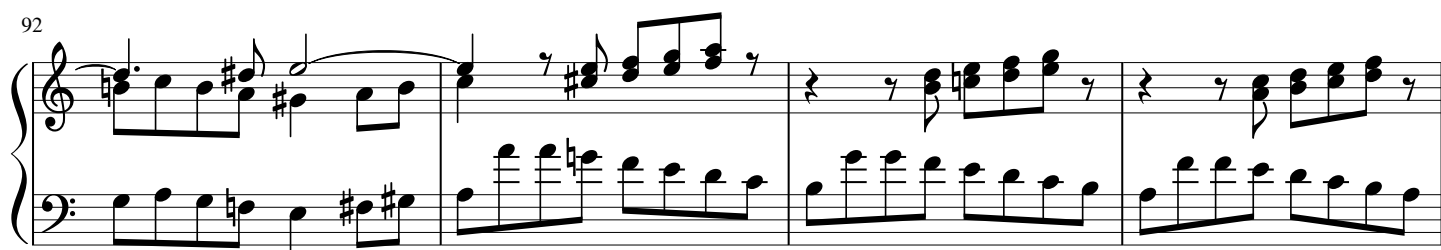
84



88



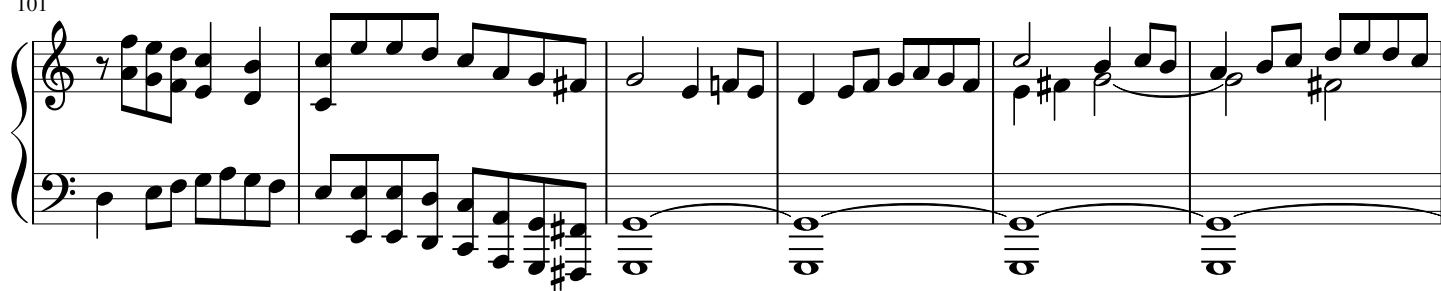
92



96



101



107



112

117

122 *Poco Adagio* (♩ = 60)

126

130

135

139

142

cresc.

f

145

p *f* *f* *f*

p *f* *p* *f*

148

cresc.

p *f*

152

Dolce

ff *p* *f* *p*

156

p *Dolce*

160

Measures 160-164. The music is in B-flat major. Measure 160 features a piano (p) dynamic. Measure 161 has a forte (f) dynamic. Measure 162 has a piano (p) dynamic. Measure 163 has a piano (p) dynamic. Measure 164 has a piano (p) dynamic.

165

Measures 165-167. Measure 165 has a crescendo (cresc.) dynamic. Measure 166 has a forte (f) dynamic. Measure 167 has a forte (f) dynamic.

168

Measures 168-170. Measure 168 has a Dolce dynamic. Measure 169 has a Dolce dynamic. Measure 170 has a Dolce dynamic.

171

Measures 171-173. Measure 171 has a Dolce dynamic. Measure 172 has a Dolce dynamic. Measure 173 has a Dolce dynamic.

174

Measures 174-176. Measure 174 has a crescendo (cresc.) dynamic. Measure 175 has a forte (f) dynamic. Measure 176 has a forte (f) dynamic.

177

Measures 177-181. Measure 177 has a piano (p) dynamic. Measure 178 has a fortissimo (ff) dynamic. Measure 179 has a Dolce (Dol.) dynamic. Measure 180 has a Dolce (Dol.) dynamic. Measure 181 has a Dolce (Dol.) dynamic.

183

f *p* *f*

Dol.

188

p *p*

cres.

191

f *f* *p*

194

sf *sf* *f* *p* *f* *p*

cres.

198

f *p* *f*

201

cres. *f*

204

p
ff

207

cres.
f
p

211 *Allegro* (♩ = 120)

p
tr

217

f
pf
p

222

f

227

f
p

232

Measures 232-236. The right hand features a melodic line with eighth and sixteenth notes, including a triplet in measure 235. The left hand plays a steady eighth-note accompaniment. A forte (*f*) dynamic marking is present in measure 236.

237

Measures 237-242. The right hand has a melodic line with some grace notes. The left hand continues with an eighth-note accompaniment. A forte (*f*) dynamic marking is present in measure 240.

243

Measures 243-248. The right hand features a melodic line with grace notes and a triplet in measure 245. The left hand has an eighth-note accompaniment. Dynamics include piano (*p*) in measures 243, 245, and 248, and forte (*f*) in measure 246.

249

Measures 249-253. The right hand has a melodic line with grace notes. The left hand features an eighth-note accompaniment. Dynamics include piano (*p*) in measures 249 and 251, and forte (*f*) in measures 250 and 252.

254

Measures 254-258. The right hand has a melodic line with grace notes. The left hand features an eighth-note accompaniment. A piano (*p*) dynamic marking is present in measure 258.

259

Measures 259-263. The right hand has a melodic line with grace notes. The left hand features an eighth-note accompaniment. A piano (*p*) dynamic marking is present in measure 259.

263

Measures 263-268. The piece is in a key with one flat (B-flat major or D minor). The right hand features a melodic line with eighth-note patterns and rests, while the left hand provides a rhythmic accompaniment with eighth-note chords and single notes. A forte (*f*) dynamic marking is present in measure 267.

269

Measures 269-274. The right hand continues with a melodic line, including a trill in measure 270. The left hand maintains a steady eighth-note accompaniment. The key signature remains one flat.

275

Measures 275-280. The right hand features a melodic line with a trill in measure 276. The left hand provides a harmonic accompaniment with chords. Dynamics of forte (*f*) and piano (*p*) are indicated in measures 278 and 280.

280

Measures 280-283. The right hand plays a continuous eighth-note melodic line. The left hand consists of a simple harmonic accompaniment with chords. Dynamics of *fp* (fortissimo piano) and *f* (forte) are marked.

284

Measures 284-288. The right hand continues with a melodic line, including a trill in measure 285. The left hand provides a harmonic accompaniment. Dynamics of *p* (piano) and *f* (forte) are indicated.

289

Measures 289-294. The right hand features a melodic line with a trill in measure 290. The left hand provides a harmonic accompaniment. Dynamics of *f* (forte) and *p* (piano) are indicated.

294

299

305

310

316

322

327

327

fp *fp* *f* *cresc.*

332

332

ff *p*

338

338

fp *fp* *fp*

344

344

fp *f*

350

350

cresc.

355

355

ff