

Stephen W. Beatty

2707 Vocalise for
Baritone in C major

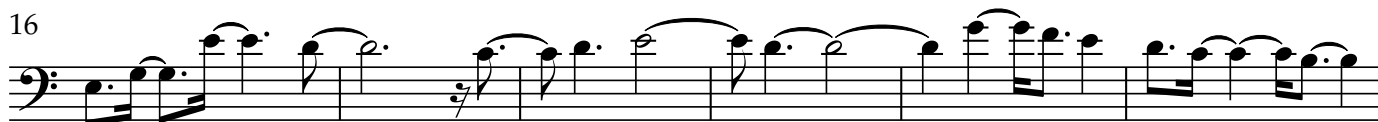
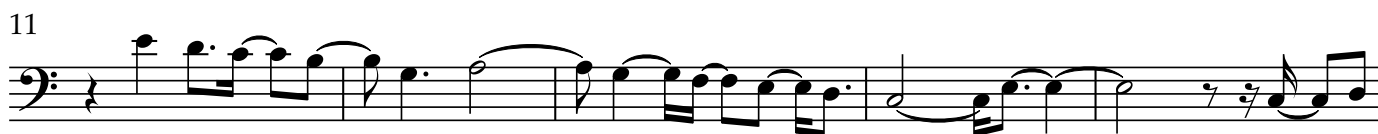
2707 Vocalise for Baritone in C major

Stephen W. Beatty (1938)

♩ = 110
Moderate

mf

Baritone Solo



43 

48 Lively *mf*

The musical notation for measures 48-51 is written on a single staff in bass clef. Measure 48 contains a half note G2, a quarter note F2, a quarter note E2, a quarter note D2, a half note C2, and a quarter note B1. Measure 49 is a whole rest. Measure 50 contains a half note B1, a quarter note A1, a quarter note G1, a quarter note F1, a half note E1, and a quarter note D1. Measure 51 contains a half note C1, a quarter note B0, a quarter note A0, a quarter note G0, a half note F0, and a quarter note E0. The tempo marking 'Lively' and dynamic marking 'mf' are placed above the staff at the beginning of measure 50.

54

54

59

59

63

63

67

67

71

76

76

80

84



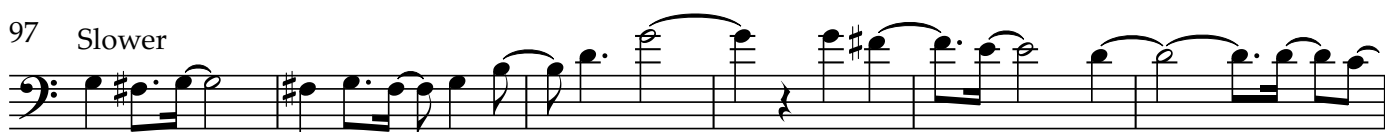
88



92



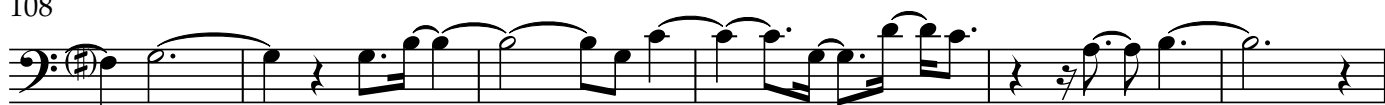
97 Slower



103



108



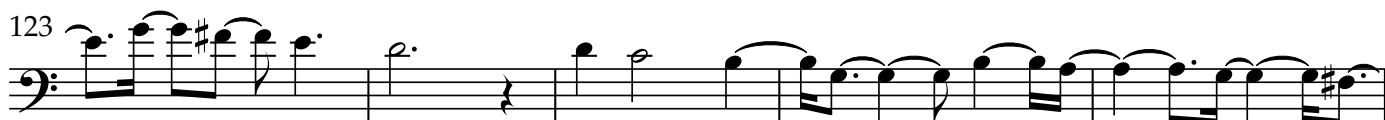
114



119



123



128



133



138



143



148



153



157



161



165



6

