

Gratulations-Menuett

minuet for orchestra

Violin I

Ludwig van Beethoven
WoO 3, 1822

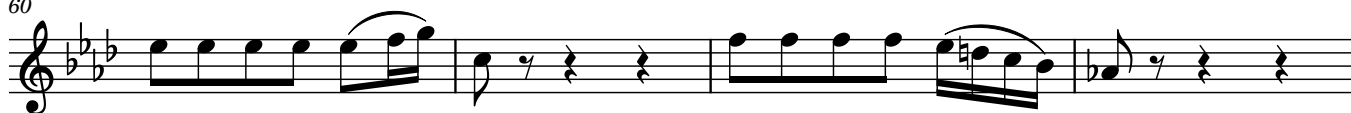
Tempo di Menuetto quasi Allegretto

Violin I score for the Gratulations-Menuett. The score is written in 3/4 time with a key signature of two flats (B-flat and E-flat). The tempo is marked 'Tempo di Menuetto quasi Allegretto'. The score consists of 54 measures, divided into systems of five measures each. The first system (measures 1-5) includes a trill (tr) and dynamic markings *f*, *f*, *sf*, and *p*. The second system (measures 6-10) includes a trill (tr). The third system (measures 11-15) includes a trill (tr). The fourth system (measures 16-20) includes a fortissimo (*ff*) marking. The fifth system (measures 21-25) includes *sf*, *sf*, *p cresc.*, and *p* markings. The sixth system (measures 26-30) includes *cresc.*, *f*, and *sf* markings. The seventh system (measures 31-35) includes a *sf* marking. The eighth system (measures 36-40) includes a first ending (1.) and a second ending (2.) with a *ff* marking. The ninth system (measures 41-45) includes a *4* marking and a *p sempre* marking. The tenth system (measures 46-50) includes a *Cl.* marking. The eleventh system (measures 51-54) includes a *p* marking.

Violin I score for the Gratulations-Menuett. The score is written in 3/4 time with a key signature of two flats (B-flat and E-flat). The tempo is marked 'Tempo di Menuetto quasi Allegretto'. The score consists of 54 measures, divided into systems of five measures each. The first system (measures 1-5) includes a trill (tr) and dynamic markings *f*, *f*, *sf*, and *p*. The second system (measures 6-10) includes a trill (tr). The third system (measures 11-15) includes a trill (tr). The fourth system (measures 16-20) includes a fortissimo (*ff*) marking. The fifth system (measures 21-25) includes *sf*, *sf*, *p cresc.*, and *p* markings. The sixth system (measures 26-30) includes *cresc.*, *f*, and *sf* markings. The seventh system (measures 31-35) includes a *sf* marking. The eighth system (measures 36-40) includes a first ending (1.) and a second ending (2.) with a *ff* marking. The ninth system (measures 41-45) includes a *4* marking and a *p sempre* marking. The tenth system (measures 46-50) includes a *Cl.* marking. The eleventh system (measures 51-54) includes a *p* marking.

2

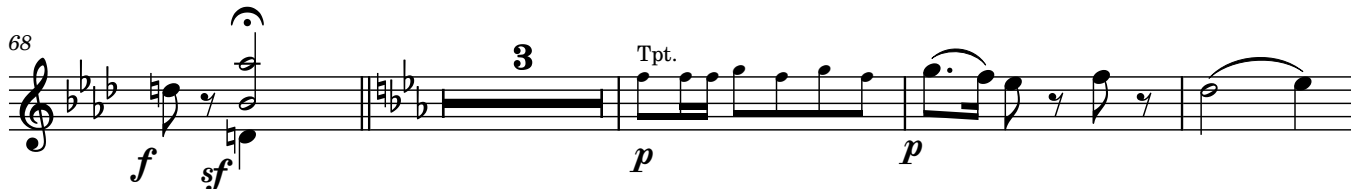
60



64



68



75



81



86



91



96



101



107

