

Ouverture und Suiten aus Thésée¹

J.-B. Lully

Overture

Fagott

gott

[illegible]

11



16 1. 2. *[Allegro]*

6

[illegible]

28

34

Exercise 34 is a short piece in bass clef, 2/4 time. It begins with a G2 quarter note, followed by a F2 quarter note, then a G2 quarter note with a sharp sign. The next measure contains eighth notes G2, A2, B2, C3. The following measure contains eighth notes D3, C3, B2, A2. The next measure contains a half note G2 with a flat sign, followed by eighth notes F2, E2, D2. The final measure contains eighth notes C2, B1, A1, G1.

39

Exercise 39 is an 8-measure piece in bass clef. It begins with a whole note G2, followed by a whole note F2. The third measure contains an eighth-note G2, an eighth-note A2, a quarter-note B2, and a quarter-note C3. The fourth measure contains an eighth-note B2, an eighth-note A2, a quarter-note G2, and a quarter-note F2. The fifth measure contains a quarter-note G2, a quarter-note A2, and a half-note G2. The sixth measure contains an eighth-note G2, an eighth-note A2, a quarter-note B2, and a quarter-note C3. The seventh measure contains an eighth-note B2, an eighth-note A2, a quarter-note G2, and a quarter-note F2. The eighth measure contains a quarter-note G2, a quarter-note A2, and a half-note G2.

45

Musical notation for exercise 45, bass clef. The piece begins with a treble clef and a key signature of one sharp (F#). It consists of two staves. The first staff contains a melody starting on G4, moving up stepwise to D5, then down stepwise to G4, and finally down to E4. The second staff contains a bass line starting on E3, moving up stepwise to A3, then down stepwise to E3, and finally down to C2. The piece ends with a double bar line.

[1. Suite]

1. Prélude



[7] Trio



[15] tous



[21] Trio

tous



[29] Trio



[37] tous



2. Trio

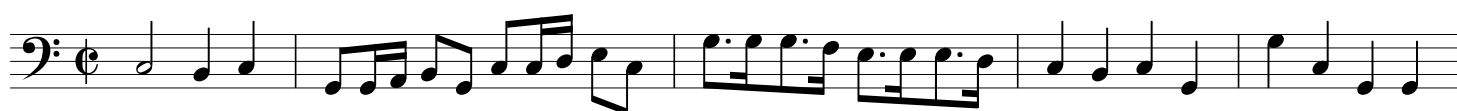
3



10



3. Combattans



6



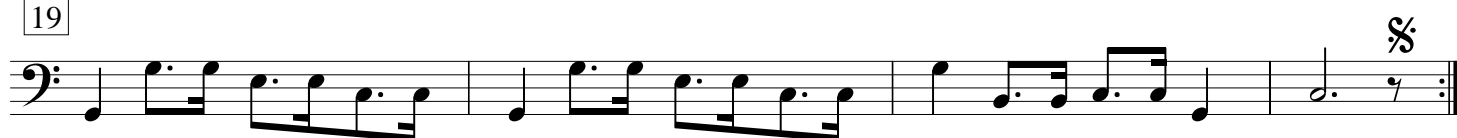
11



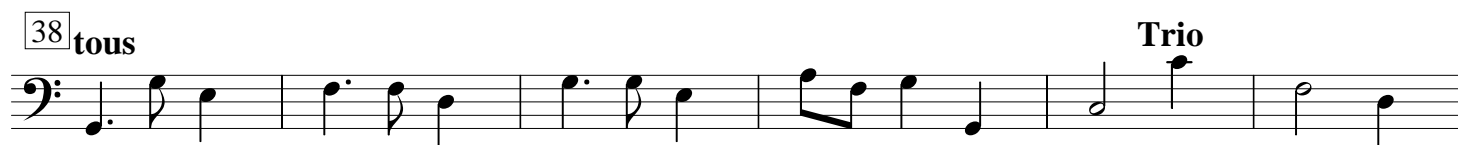
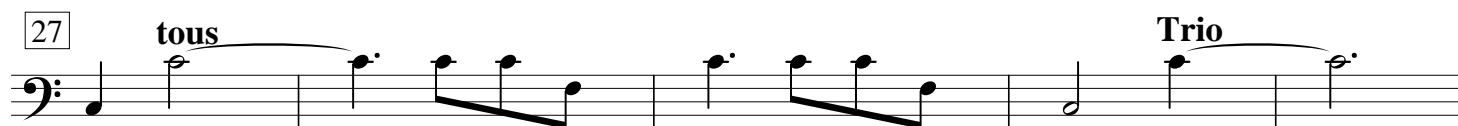
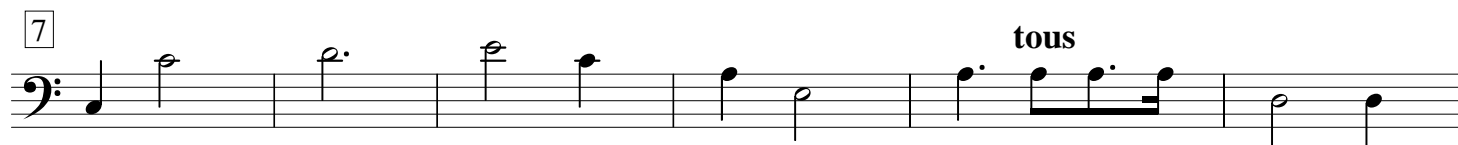
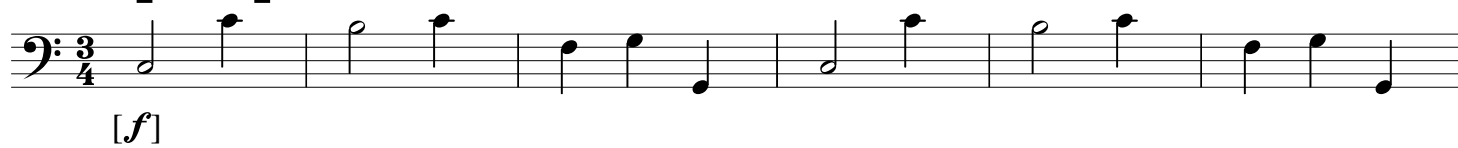
15



19



4. [Air]



2. Suite

7. Prélude



7



14



20



27



8. Air



6



11



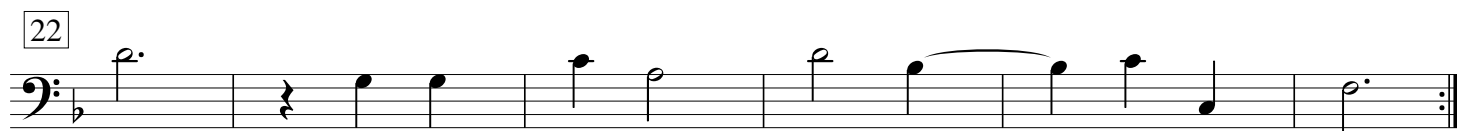
16



21

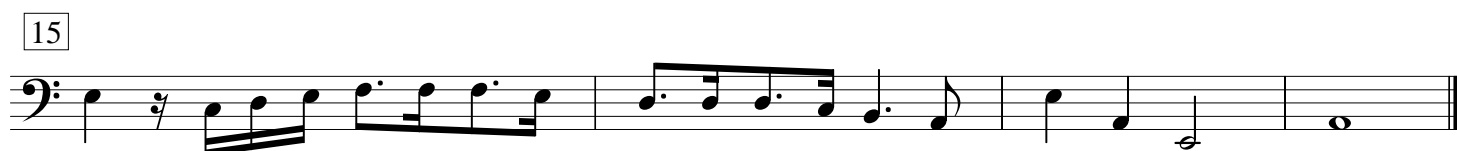


9. Air

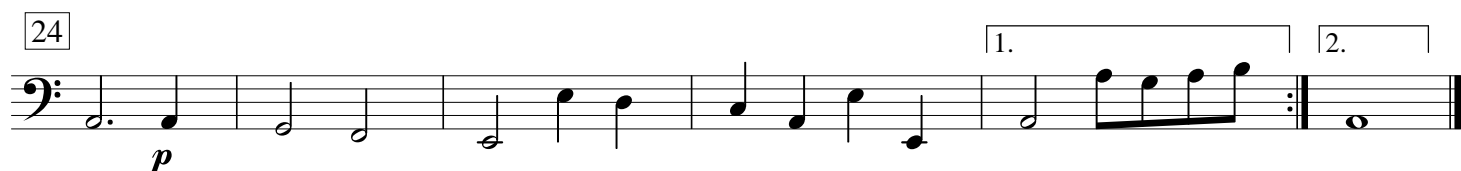


3. Suite

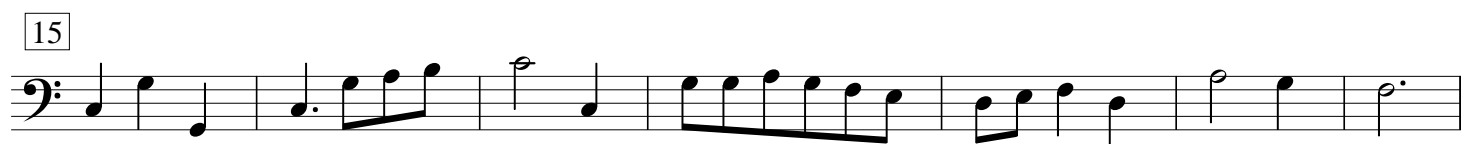
10. Prélude



11. Air



12. Trio



22



29



36



43



13. Air



7



12



4. Suite

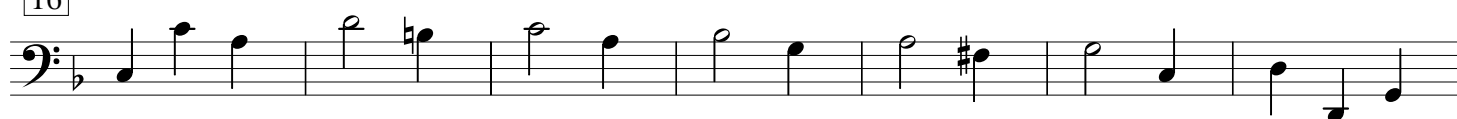
14. Air



9



16



23



15. Gique

%

fin



5



9



14



da capo %