

Symphony No. 5 in B-flat Major

Violoncell

1. SATZ

Anton Bruckner

Introduction
Adagio
pizz.

pp

10

dim. sempre

arco stacc.
ff marcato
2 20 3
stacc.
ff marc.

4 30 1 A *Bewegter (im künftigen Allegro-Tempo)*
Kb. *trem.* *pp*
poco a poco cresc.

40 *Ursprüngliches Adagio*
trem.
ff
sempre cresc.

50 *B Allegro* 3 *gezogen*
div.
dim. *pp* *p*

60 *gezogen*
mf cresc. *dim.* *mf* *dim.* *p*

70 *dim.* *pp* *dim.* *ppp* *p poco a poco cresc.*

sempre cresc. *ff*

80

90 2
dim.

Violoncell

3 100 1 C *pizz.*
pp dim. *ppp* *p*

pp *p* *cresc.* *ppp*

110
pp *p* *cresc.* *pp* *p* *cresc.*

ritard. *Tempo I*
ppp *p* *cresc.* *pp*

120
p *cresc. sempre* *f* *pp*

ritenuto 130 *α Tempo* 8 140 1 *Fl. 1*
ppp *ppp*

Klar. 1 *Fl. 1* *E. z.* *(pp) arco*
pp *cresc. f* *pp* *cresc.* *ppp*

150
f

1 *pizz.* 1 160 *F arco*
f *pp* *ppp* *p*

170
cresc. *ff* *gestrichen, gezogen*

mf cresc. sempre *ff marcato*

180 *(marcato)*
ff sempreff *p*

gestrichen, kurz 190 gestrichen gestrichen
cresc. sempre *f*

kurz gestrichen gestrichen gestrichen
ppp *pp* *p poco a poco cresc.*

gestrichen gestrichen gestrichen
mf sempre cresc. *ff sempreff*

200

1 210 3
p cresc. sempre *ppp*

220 I 230
ppp
Tempo v. d. Introduction
Adagio

240
arco stacc. *Allegro* *Adagio*
pp pizz.

250 7 260 5 K
ff marc. *stacc.* *pp* *Allegro*
ff

270 5 280 3
gezogen *ff* *gezogen*

Violoncell

L *ff marc. stacc. sempre* *ff* *gezogen*

290 *ff sempre* *ff*

pp **300** *ff stacc. sempre* M

ff *ff* **310**

pp

pp sempre

N *fff* **320**

fff

330 *ppp* *pizz.* *p*

dim. *ppp* **340** *ppp* *pp*

350 *pp n. 1* *arco* *pp* *poco a poco cresc.*

f cresc. sempre 360

ff *gezogen* *mf*

gezogen 370 *pp* *ff* **3**

380 **1** *P* *pizz.*
p cresc. *pp* *P cresc.* *ppp*

ritardando *Q* *Tempo I* 390
p cresc. *pp*

p cresc. sempre *f* *pp*

ritenuto 400 *a Tempo* **5**

R I 410 *arco* *pp* *ppp* *f* *cresc. f*

1 *pizz.* 420 **1**
f

S arco
PP *ppp* *p*

430 *cresc.* *ff* *p*

kurz gestrichen *gestrichen* *gestrichen*

poco a poco cresc. *cresc.*

ff

pizz. *U pizz.*

pp *pl*

poco a poco cresc.

V arco

mf cresc. sempre *f cresc.* *ff*

W 4 X sempre ff stacc.

ff marc.

Y 2

gezogen *p poco a poco cresc.*

Z

mf cresc. *fff*

1 2 3 4 5 6

7 8 9 10

1 E Lang gestrichen

P Lang gezogen *ff*

ff

immer lang gestrichen *ff*

90 *P* *cresc. sempre*

ff *ff* *ff*

Lang gestrichen

f 100 3 Lang gezogen 2

pp 3

F *pizz.*

P *cresc.* *cresc.*

110

p dim. 5 120 1

(arco)

mf cresc. *f cresc.* gezogen *dim*

1 2 130 gezogen *mf*

G

P *ff* gezogen

140 10

(dim.)

Detailed description: This page of a cello score contains ten staves of music. The first staff begins with a measure marked '1' and an 'E' above the staff, followed by the instruction 'Lang gestrichen'. The first two staves feature a melodic line with sixteenth-note patterns, marked with dynamics *P* and *ff*. The third staff includes a measure marked '90' and the instruction '*P cresc. sempre*'. The fourth staff continues the melodic line with dynamics *ff*. The fifth staff has a measure marked '100' and includes the instruction 'Lang gezogen'. The sixth staff begins with a measure marked '110' and the instruction 'F pizz.'. The seventh staff has a measure marked '120' and the instruction '*p dim.*'. The eighth staff starts with '(arco)' and includes dynamics *mf cresc.*, *f cresc.*, and 'gezogen'. The ninth staff has a measure marked '130' and the instruction 'gezogen'. The tenth staff begins with a measure marked '140' and the instruction '10'. The piece concludes with a final measure marked '(dim.)'.

150 9 FL. 1 H Beinahe Melodie im gleichen Rhythmus wie im

pp

Allabreve-Takte, jedoch langsamer

p poco a poco cresc. ff dim.

p p ff

180

ppp

pp poco a poco cresc.

190

ff ff (sempre) div.

dim. pp

ff dim

M 200

p p pizz.

210

ppp

3. SATZ. SCHERZO

Molto vivace (Schnell)

pp *p*

10 *cresc.* *ff*

20 *pp* *cresc.* **Bedeutend langsamer**

30 *ff* *diminuendo* *ff*

40 *dim.* *pp poco a poco cresc.* **Allmählich wieder ins schnelle Tempo** **A** *poco a poco accel. et cresc.*

50 *sempre accelerando* *sempre cresc.* *f* *cresc.*

60 *ff* *p diminuendo* **70**

ff *p diminuendo* **B** **80** *pp poco a poco cresc.*

90 *f* *cresc.*

ff **C** *3* **100** *pp*

110 D 5
cresc. *dim.*

120
ppp *dim.* *ppp*

130 1 E 7 140 10
sempre ppp

150 6 Trp. (ff) (arco) ff 160

F 170 1 PP

180 3 3 ritardando 2

Bedeutend langsamer

pizz.

190 P poco a poco cresc.

200 P (1) diminuendo arco G 5 210 8

Ob.1 220 H p poco a poco cresc. mf sempre cresc.

230 f (cresc.) ff J

240 ritardando 1 PP dim. ppp

Violoncell

K Schnell Tempo I

250

pp p

cresc. ff

Bedeutend langsamer pp cresc.

ff dim ff

dim. pp poco a poco accel. et cresc.

sempre accel. (f) cresc.

(ff) cresc.

(p) (dim.)

pp poco a poco cresc. f (cresc.)

ff

PPP

dim. ff

Measures 370-380. Bass clef, 4/4 time. Measure 370 contains a boxed measure number '370'. Measure 380 contains a boxed measure number '380'. The notation consists of a single melodic line with various articulations and dynamics.

Trio im gleichen Tempo

Measures 10-20. Bass clef, 4/4 time. Measure 10 contains a boxed measure number '10'. Measure 20 contains a boxed measure number '20'. Above measure 20 is the marking 'n.1'. Measure 19 has a '9' below it. Measure 20 has an 'A' above it. Dynamics include 'pp' and 'pp hervortretend'.

Measures 30-40. Bass clef, 4/4 time. Measure 30 contains a boxed measure number '30'. Measure 40 has a 'B pizz.' above it. Dynamics include 'dim.', 'ppp', and 'p'.

Measures 40-50. Bass clef, 4/4 time. Measure 40 contains a boxed measure number '40'. Measure 50 has an 'arco' above it. Dynamics include 'sempre cresc.' and 'p'.

Measures 50-60. Bass clef, 4/4 time. Measure 50 contains a boxed measure number '50'. Measure 60 contains a boxed measure number '60'. Measure 60 has a 'C 5' above it. Measure 60 has a 'Kb. pizz.' above it. Dynamics include 'dim.', 'pp', and 'pp'.

Measures 70-80. Bass clef, 4/4 time. Measure 70 contains a boxed measure number '70'. Measure 80 has a 'cresc. sempre' above it. Dynamics include 'p' and 'cresc. sempre'.

Measures 80-90. Bass clef, 4/4 time. Measure 80 contains a boxed measure number '80'. Measure 90 contains a boxed measure number '90'. Measure 90 has a 'D 3' above it. Dynamics include 'sempre diminuendo'.

Measures 100-110. Bass clef, 4/4 time. Measure 100 contains a boxed measure number '100'. Measure 110 contains a boxed measure number '110'. Measure 110 has an 'E' above it. Measure 110 has a '1' above it. Dynamics include 'ff' and 'ff'.

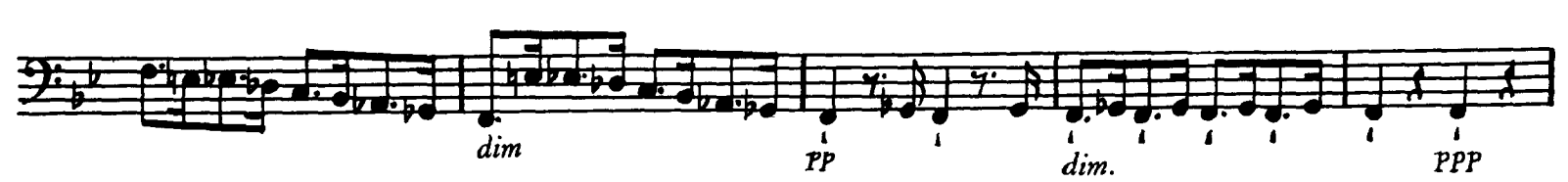
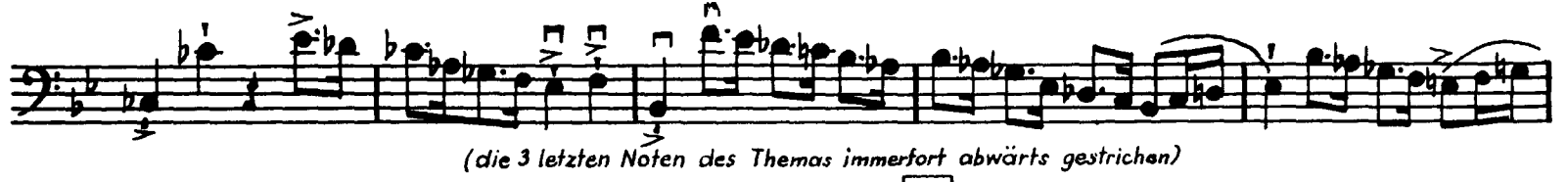
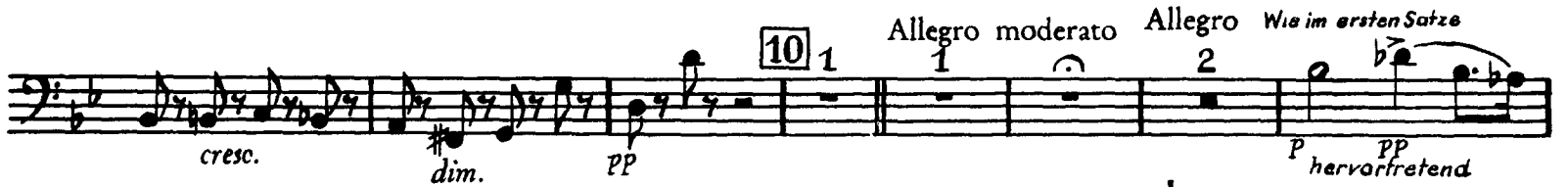
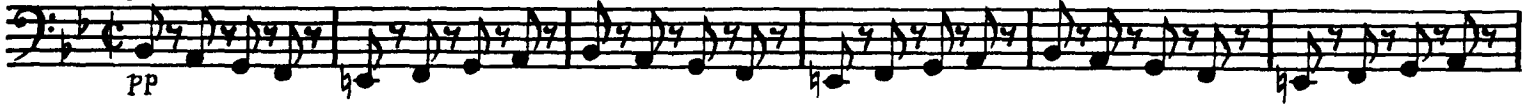
Measures 120-130. Bass clef, 4/4 time. Measure 120 contains a boxed measure number '120'. Measure 130 contains a boxed measure number '130'. Measure 130 has an 'F pizz.' above it. Dynamics include 'mf', 'p', and 'pp'.

Measures 130-140. Bass clef, 4/4 time. Measure 130 contains a boxed measure number '130'. Measure 140 contains a boxed measure number '140'. Measure 140 has a 'pizz.' above it. Dynamics include 'pp', '(cresc.)', '(dim.)', and 'p'.

Measures 140-150. Bass clef, 4/4 time. Measure 140 contains a boxed measure number '140'. Measure 150 has a 'Scherzo da capo' to its right. Dynamics include 'dim.', 'pp', and 'pizz.'.

FINALE

Adagio
pizz.



70

B deutlich hervortretend pizz.

p *poco a poco cresc.* *P* *poco a poco cresc.*

PP *cresc.* *mf*

PP *dim.* *PP* deutlich hervortretend

80

poco a poco cresc. *arco*

C Etwas mehr langsam

1 *mf hervortretend* *p* *immer hervortretend*

p cresc. *mf* *f* *mf cresc.* *f*

90

immer hervortretend
mf cresc.
Früheres Tempo

D pizz.

P *poco a poco cresc.* *P* *poco a poco cresc.* *PP*

100

poco a poco cresc.

ff *sempre f* *arco*

110

dim. *p dim.*

p *pizz.* *arco* *pizz.* *mf*

3

Violoncell

120 1 arco (f) cresc. dim. PP PP

130 PP dim. PPP PP *rubata* *markiert gestrichen*

F ff *markiert gestrichen* marcato

140 *sempre ff*

150 *markiert gestrichen*

160 1 P dim.

170 3 PPP PPP

180 2 H 5 Tba. 1 ff

190 pizz. 2 PPP

200 *divisi* arco PPP *sempre ppp* pizz.

210 1 I 4 pizz. 3 220 PP PPP

K 7 230 *v1* f

240 *arco* PPP *cresc.* f *cresc.* *cresc.*

diminuendo *p* 250 *pp*

ppp *cresc.* *cresc. sempre* 260

f *cresc. sempre* 260 *f*

Vi = ♩ (bis Q) *dim* *p* *poco a poco cresc.*

270 *L* *ff* *tr*

Die letzten 3 Noten des Hauptthemas immerfort kurz abwärts

p *cresc.* *ff* 280

(sempre) ff

290 *mf* *cresc.*

300 *cresc.* *ff*

PP *PP sempre* 310

sempre (pp) *dim.* *PP* *(dim.)* *PPP* *sempre PPP*

320 *sempre cresc.* *mf*

Violoncell

ff *dim.* P PP PP

ff *cresc.* fff

dim. pp *sempre pp*

dim. ff P PP

PP PP PPP *sempre PPP*

P poco a poco cresc.

mf *cresc.* f *cresc.* ff *cresc.*

fff

fff *sempre*

molto ritenuto

p *dim.* PP *dim.* PPP

a Tempo
pizz. 400

p (*deutlich hervortretend*) *cresc.* *p* *cresc.*

pp *cresc.* 410

deutlich hervortretend immerfort dim. *pp* *Etwas langsamer* *poco a poco cresc.*

cresc. *mf hervortretend* *S arco*

420

p *mf* *p cresc.* *mf* *mf*

f hervortretend *mf crescendo* *f* *T pizz.* *pp deutlich cresc.* *dim.*

p cresc. *dim.* *ppp* 430 *f cresc.*

pizz *pp deutlich* *cresc.* *sempre cresc.*

ff *sempre ff*

440 *dim.* *mf* *arco*

crescendo *diminuendo* 450 *pp* **2**

pp *p poco a poco cresc.* *f cresc.*

V **460** *ff*

470 *sempre ff* **480**

sempre ff

490 *p* *pp* *PPP* *pp* **W**

500 *poco a poco cresc.*

mf (cresc.) *ff* *pp* *pp sempre* **510** **3**

520 *pp* *pp* *p* *p*

X *ff* *sempre ff* *ff*

530 *pp* **Y** **3** *harvortretend* **1** **540** **8**

Hrn. 1

ppp pp pp

p poco a poco cresc.

cresc. f cresc. fff(div.)

trem. *Z div.*

fff sempre fff fff sempre

fff sempre

Choral bis zum Ende fff

fff

fff

fff

fff sempre fff

marcato