

Concerto stilizzato

paraphrase on a motif by Brahms

PARTE PRIMA: "CADENZA"

Adagio $\text{♩} = 60$

12

B. cl.

15

+Bsn. 1

+Bsn. 2

Tamás Beischer-Matyó

p espressivo

20

3

Cadenza

25

ppp \rightarrow *ff*

30

ff

poco rall. - - Poco sostenuto

ff *ff*

PARTE SECONDA: "FORMA-SONATA"

Allegro con brio $\text{♩} = 180$ ($\text{♩} = 60$)

35

40

ff *ff* *ff* *ff* \rightarrow *pp*

45

C. a.

p

50

B. cl.

f

55

2

Copyright Tamás Beischer-Matyó, 1996

www.beischermatyó.hu/concerto_stilizzato

This work is licensed under the Creative Commons Attribution-NonCommercial-NoDerivatives 4.0 International License.
To view a copy of this license, visit www.creativecommons.org/licenses/by-nc-nd/4.0/

Musical score for Clarinet in B \flat 1, measures 60-105. The score includes various dynamics, articulations, and performance instructions.

Measures 60-69: *f* (measures 60-64), *ff* (measures 65-69). Articulation: *ord.* (measure 60).

Measures 70-74: *f* (measures 70-74). Articulation: *flutt.* (measures 70-74).

Measures 75-79: *f* (measures 75-79). Articulation: *fl.* (measures 75-79).

Measures 80-84: *p* *espressivo* (measures 80-84), *f* *espressivo* (measures 85-89). Articulation: *fl.* (measures 80-84).

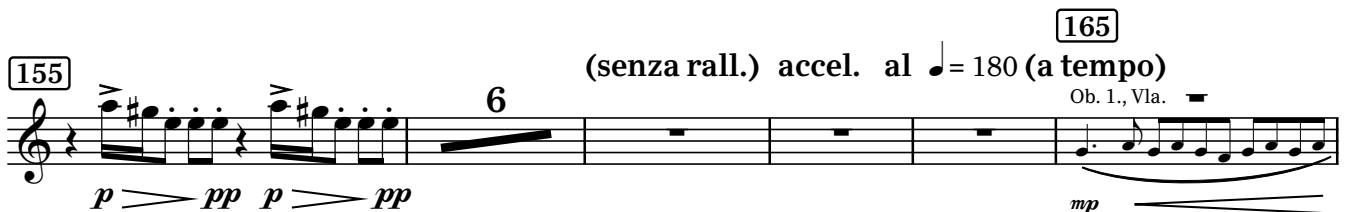
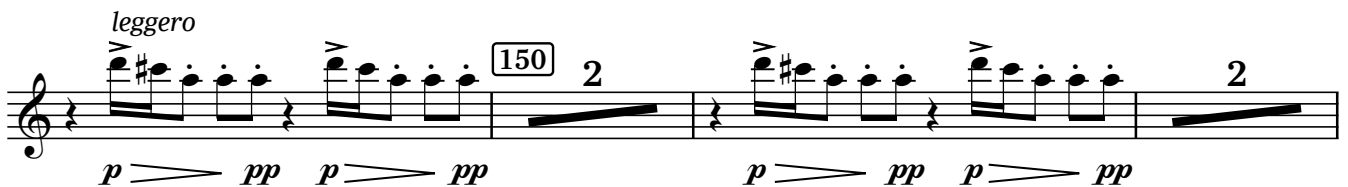
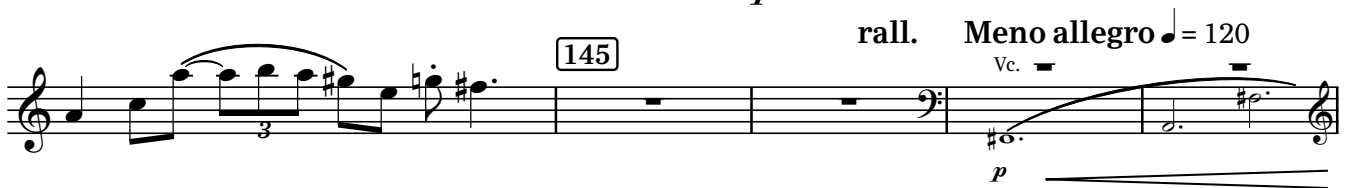
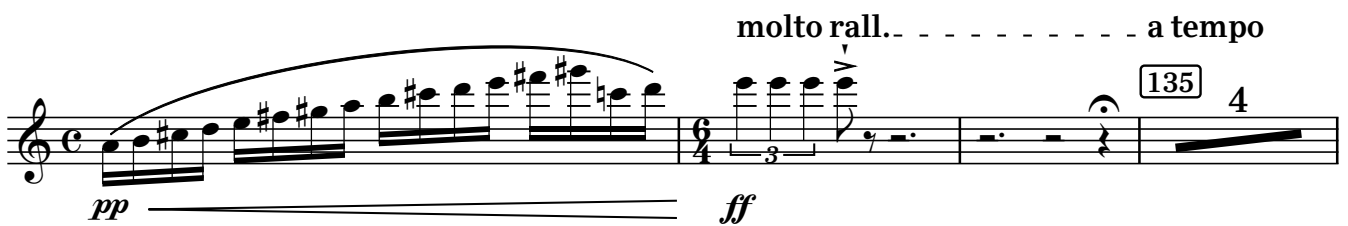
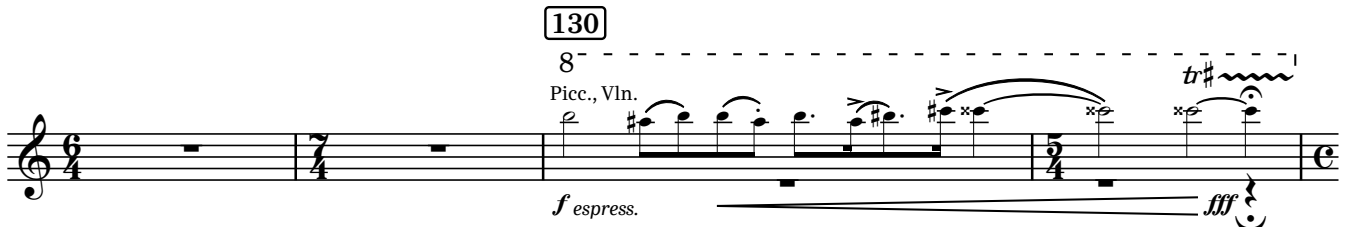
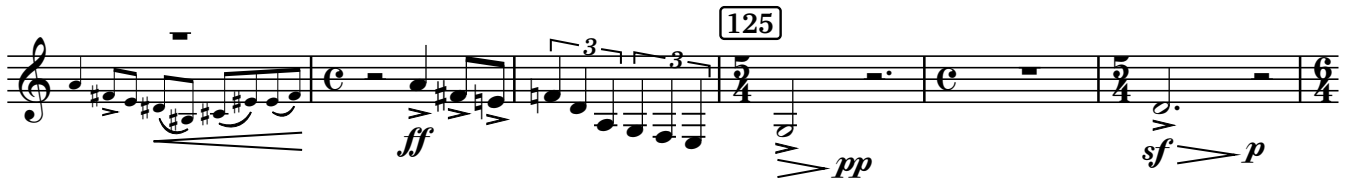
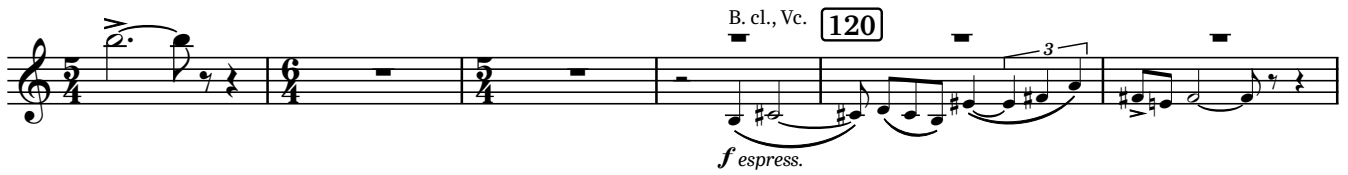
Measures 90-94: *ff* (measures 90-94). Articulation: *fl.* (measures 90-94).

Measures 95-99: *ff* *grandioso* (measures 95-99). Tempo: *poco ritard.* *Sostenuto* $\text{♩} = 48$ ($\text{♩} = 144$).

Measures 100-104: *ff* (measures 100-104). Tempo: *allarg.* *a tempo* $\text{♩} = 60$ ($\text{♩} = 180$).

Measures 105-109: *mf* *pp* (measures 105-109). Tempo: *poco ritard.* *a tempo* *poco ritard.*

110 a tempo



Measures 165-184. The music is in 2/4 time. Measures 165-169 feature a melodic line with dynamics *mf*, *f*, *f*, and *ff*. Measure 170 has a dynamic of *ff* and a fermata. Measures 171-174 continue the melodic line. Measure 175 has a dynamic of *ff* and a fermata. Measures 176-184 continue the melodic line with various dynamics and articulations.

PARTE TERZA: "LIED"

Measures 185-205. The music is in 3/4 time. Measure 185 is marked *subito Adagio molto* with a tempo of 60 (♩ = 60). Measures 186-194 continue the melodic line with dynamics *ppp* and *senza colore*. Measure 195 has a dynamic of *p* and a fermata. Measures 196-199 continue the melodic line. Measure 200 has a dynamic of *mf* and a fermata. Measure 201 is marked *allargando*. Measures 202-205 continue the melodic line. Measure 206 is marked *a tempo* and *S. pno.* Measures 207-215 continue the melodic line with dynamics *ff* and *appassionato*.

martellato con tutta forza

210

215

pppp

molto rall. *più adagio e molto flessibile* ♩ = 48 *poco a poco allarg.*

220

PARTE QUARTA: "RONDÒ"

a tempo (♩ = 48) *rall.* *Allegro vivace* ♩ = 180 (♩ = 90)

225

p marcato *ff ff*

230

poco rall.

f

a tempo *rall.*

2

p *p* *p* *mf* 3

245 *a tempo* *flutt.* 250 *(flutt.)* *ord.*

2

p *f* *p* *f* *p* *ff*

255

2

mf < *f*

260

p

265

270

f *p*

275

4 3

S. pno.

p marcato *f*

290

295

poco ritard. a tempo

f *p* *f*

310

Tpt. 1

flutt.

ff *ff*

rall.

ord. flutt.

315

Meno vivace ♩ = 144

Hn.

320

ord.

p

325

330

8 340 *rall.* *a tempo* Tpt. 1 S. pno.

mp

345 *ff*

rall. - - - - - *Allegro vivace* ♩ = 180

350 3 *f marcato*

355 360

365

370

375

poco rall. *Sostenuto* ♩ = 48 (♩ = 144)

380 *ff grandioso*

allarg. - - *a tempo* ♩ = 180

385 *tr* 390 *rall. molto* 2

PARTE QUINTA: "CONCLUSIONE"

a tempo $\text{♩} = 180$

395

fff *sf* *sf* *sf*

400

ff marc.

405

410

4

C. a., B. cl.

f *ff* *pp*

flutt.

ord. *tr*

420

p *ff* *p* *ff*

rall. - - - - - Poco sostenuto

a tempo, ma poco agitato

425

p *ff* *ff*

rall. molto - - - - - a tempo, molto pomposo

430

ff *ff*

435

440