

Missa solemnis in c

KV 139 · "Waisenhausmesse"

Trombone III · Basso

Wolfgang A. Mozart
MDCCLVI - MDCCXCI

Kyrie

Adagio

Chor S VI I Trb. I,II Chor S Trb. I,II

Ky - ri - e, Ky - ri - e, VI.

f *p* *f* *p*

5 Chor S Trb. I,II

Ky - ri - e, VI.

f *p* *f* VI.

10 13 **Allegro** Ob. 8

VI.

23 VI I+II +Ob., Trp. *f*

28 1 3 *fp*

37 1 *f* *p*

44 *f*

50 7

63 Bassi

f

1

69

fp

f

3

78

p

f

1

85

f

91

f

2

96

f

2

100

Andante

f

3

105 S solo

(Fine)

Chri - ste e - lei - son,

34

(dal Segno al Fine)

Kyrie **Allegro** (T. 13) da capo

Gloria

Allegro

f

6

f

12

f

18

f

3

Andante

VI I 24 6 32 12 44 22 VI I *Nachspiel ohne Soli*

A solo S solo

68 (VI I) **Adagio** *f*

73 **Vivace** Trb. I

78

83 **Andante** VI I 5 91 10 101 12 113 26 T solo B solo T solo

139 **Adagio** VI I *f*

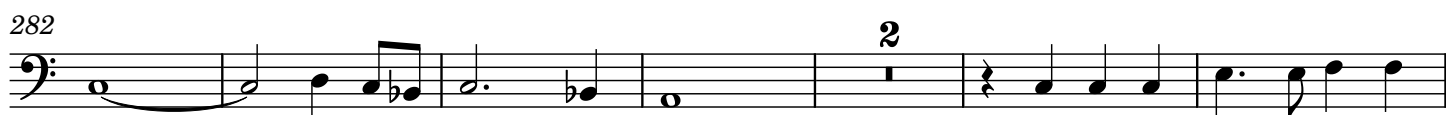
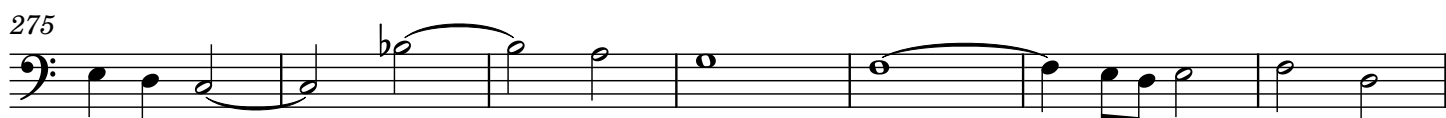
144

150

156

161

166 **Allegro** VI I 6 174 35 209 30 S solo S solo

Nachspiel ohne S solo**Allegro**

324 1 (-12) 2 3 4 5 6 7 8

333 9 10 11 12

324 333

Allegro**Credo**

7 *f*

13 2 16

20

26

32 1

38

43

49

54 2

61 2 63 8

7 13 20 26 32 38 43 49 54 61 63

Andante
75 S solo
18 95 20 VI I
Et in - car - na - tus est de S, A soli

Adagio
116 Trp. a 4 con sord.
fp Trp. fp Trp. fp

120 fp Trp. fp

124 p

Allegro
128 S solo
Et re - sur - re - - - - (-xit)

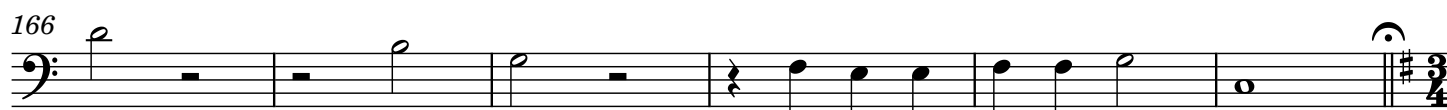
132 f

137

142

147 3

Adagio **Allegro**
154



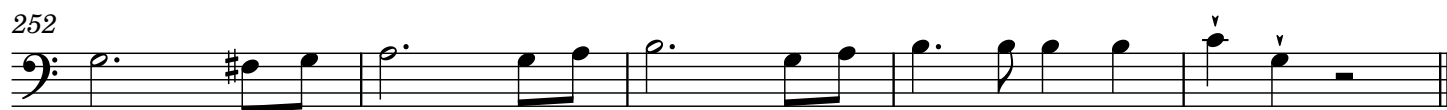
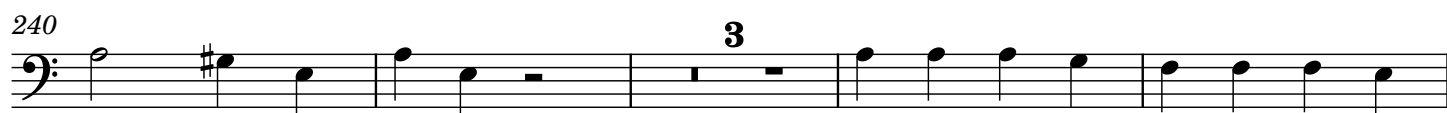
Andante

172 VI I 11 185 44 VI I

T solo

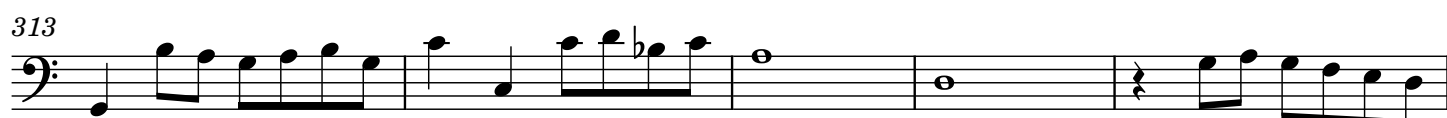
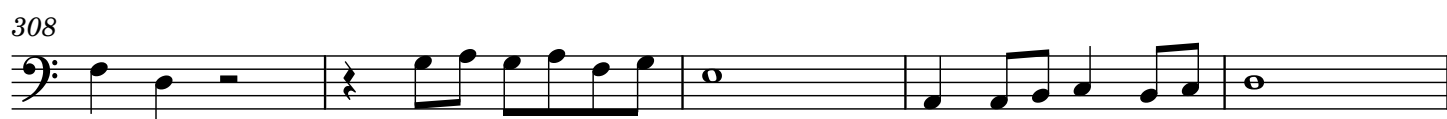
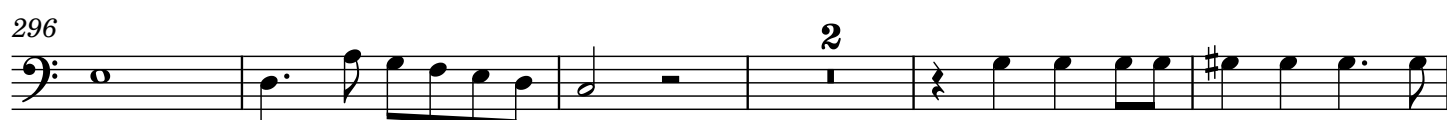
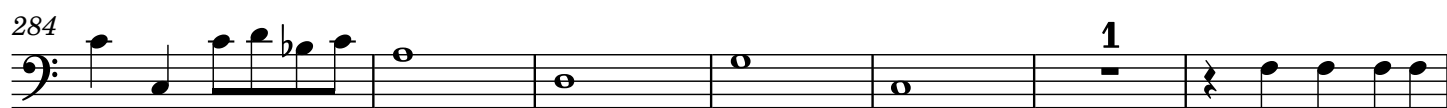
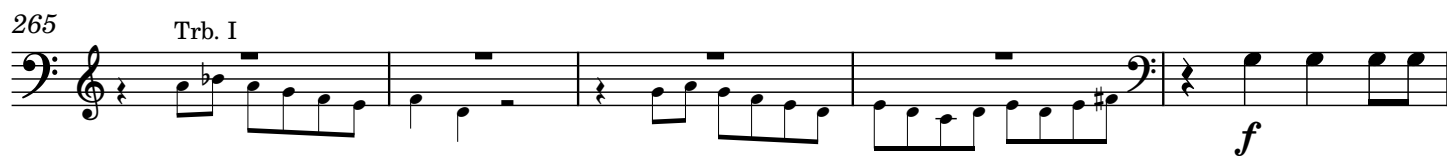
Allegro Chor S

231 Et u - nam f 1



Adagio **Allegro**

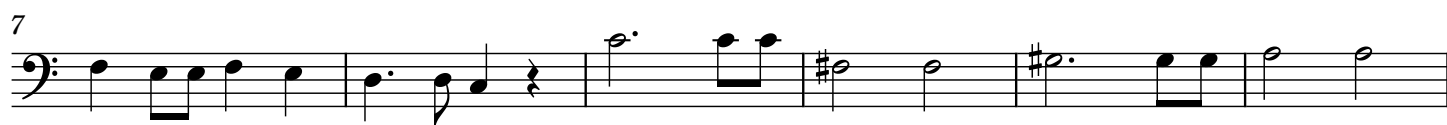
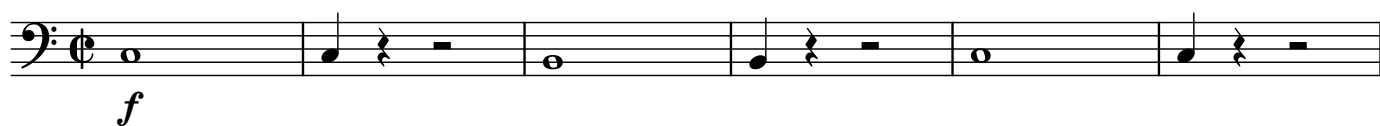
257 VI I+II 4



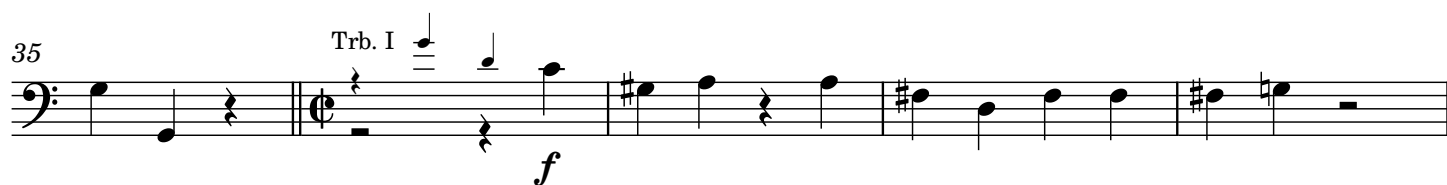


Sanctus

Adagio



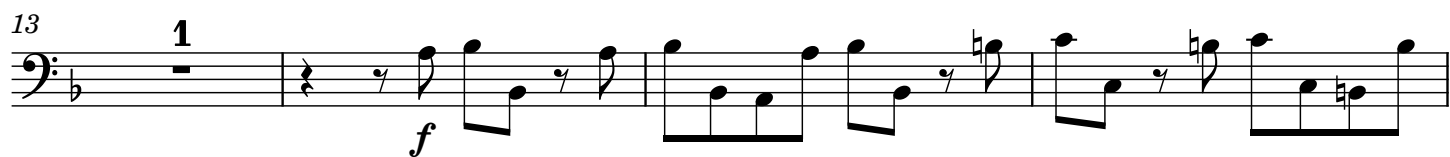
Allegro



Benedictus

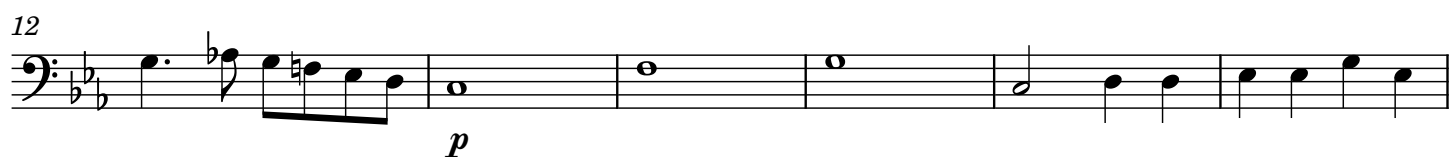
Andante

S solo



Andante

Agnus Dei



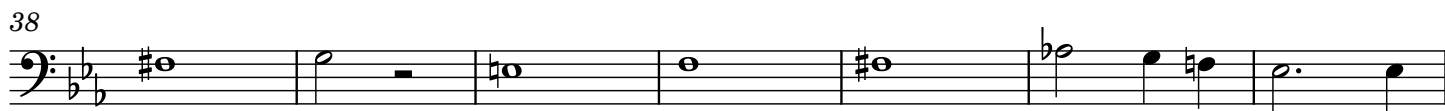
24



31



38



45



56



67



76



83



94



102



109



118



Notizen