

Violoncello
Violone
Fagotto

Rodrigo-Suite

Georg Friedrich Händel
HWV 5

$\text{♩} = 100$

OUVERTURE



8



1.

$\text{♩} = 75$

2.

12



19



23



30

Tutti



36



41

$\text{♩} = 100$

Lentement



47



1.

2.

53

$\text{♩} = 75$



GIGUE

9



18

**SARABANDE**

12



24



♩ = 190

MATELOT

7



15



24



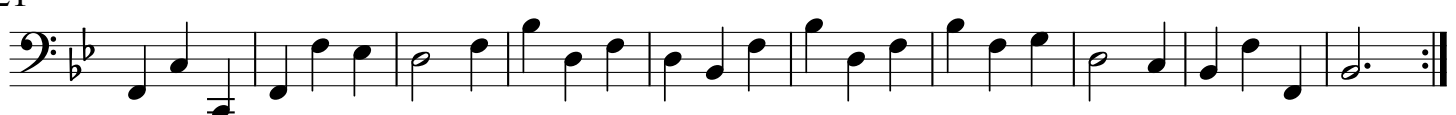
♩ = 108

MENUET I

10



21



PASSACAILLE

9 B.C

18

27 Tutti

34

39

47

50

53

60 Tutti Fg.

67 Tutti

74

82

91

4

Violoncello/ Violone/ Fagotto

