

Bass Recorder

# "The Flatt Consort"

Set 2

Matthew Locke (1630 - 1677)

## 1. Fantasia I

♩ = 110

8

12

20

26

34

42

48

54

60

65

## 2. Courant

♩ = 160

8

11

8

34

Detailed description: This block contains the first four systems of musical notation for the piece '2. Courant'. The notation is in bass clef with a key signature of two flats (B-flat and E-flat) and a 3/4 time signature. The first system starts at measure 8 and ends with a whole rest. The second system starts at measure 11 and ends with a double bar line. The third system starts at measure 8 and ends with a double bar line. The fourth system starts at measure 34 and ends with a double bar line.

## 3. Fantasia II

♩ = 110

8

6

13

5

25

32

40

48

Detailed description: This block contains the first eight systems of musical notation for the piece '3. Fantasia II'. The notation is in bass clef with a key signature of two flats (B-flat and E-flat) and a common time signature (C). The first system starts at measure 8 and ends with a double bar line. The second system starts at measure 6 and ends with a double bar line. The third system starts at measure 13 and ends with a double bar line. The fourth system starts at measure 5 and ends with a double bar line. The fifth system starts at measure 25 and ends with a double bar line. The sixth system starts at measure 32 and ends with a double bar line. The seventh system starts at measure 40 and ends with a double bar line. The eighth system starts at measure 48 and ends with a double bar line.

54



60



67



74



## 4. Saraband

**♩ = 100**



11



21



## 5. Fantasia III

**♩ = 110**



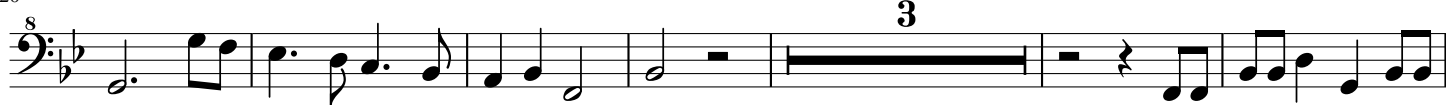
8



14



20



29



34



41



47



53



58



## 6. Jigg

♩ = 70



8

♩ = 100

