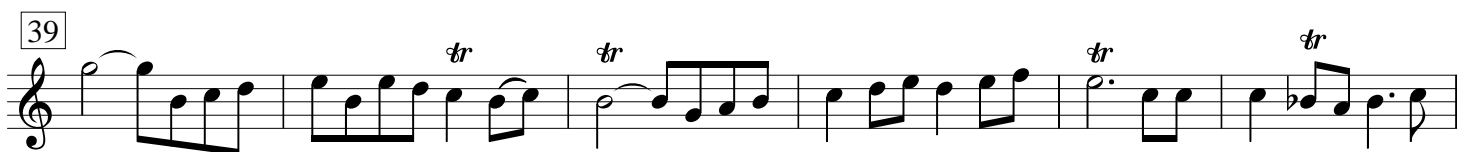
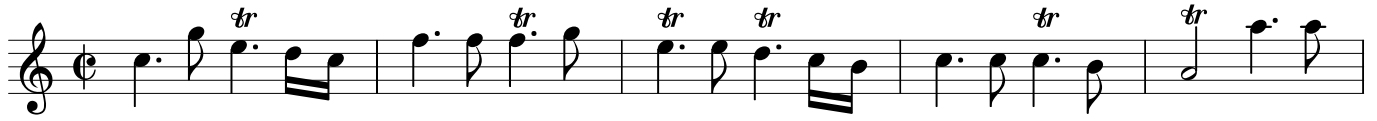


Ouverture und Suiten aus Thésée¹

J.-B. Lully

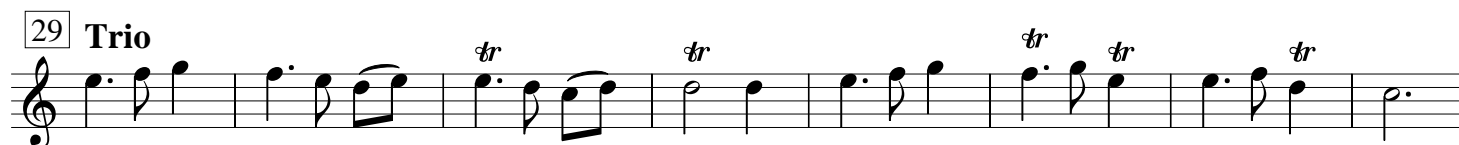
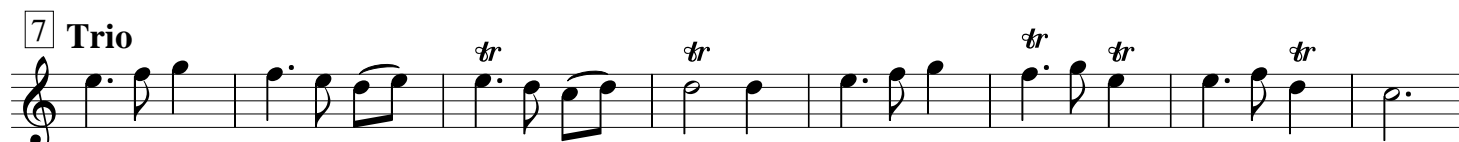
Ouverture

Oboe 1



[1. Suite]

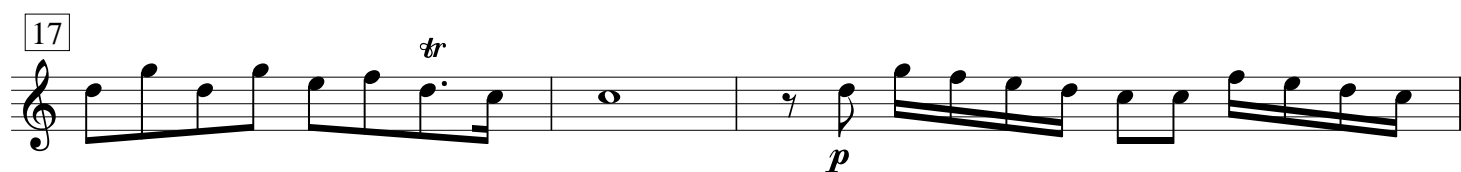
1. Prélude



2. Trio



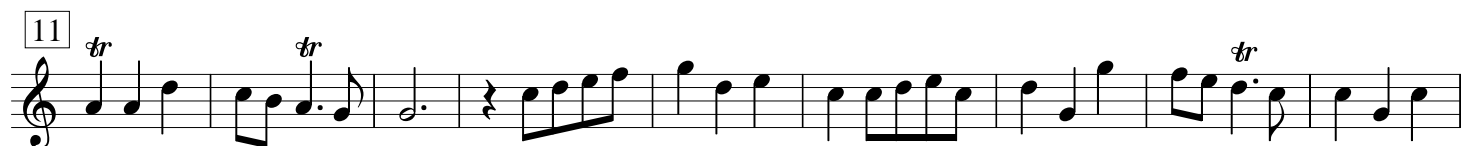
3. Combattans



4. [Air]



5. Air



6. Trio



2. Suite

7. Prélude

7

13

19

25

8. Air

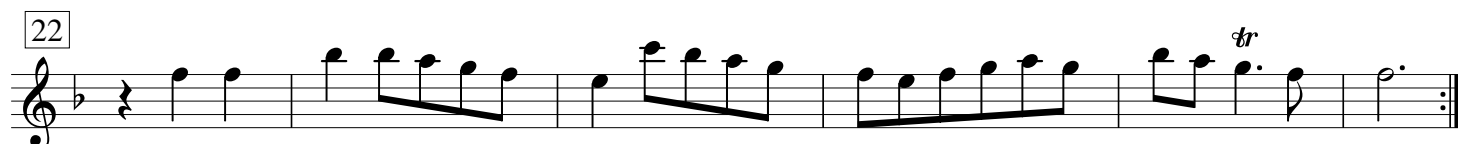
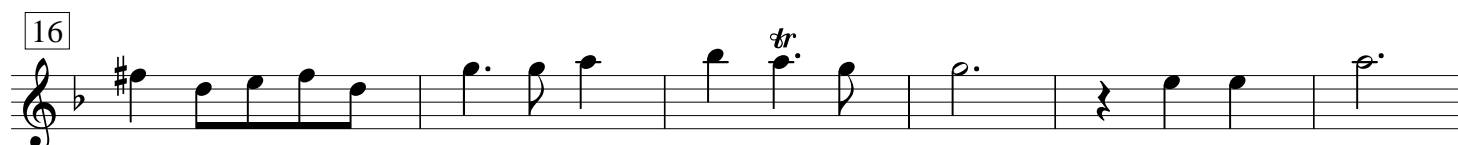
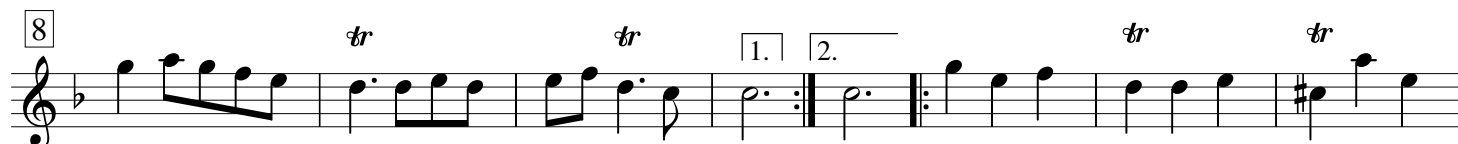
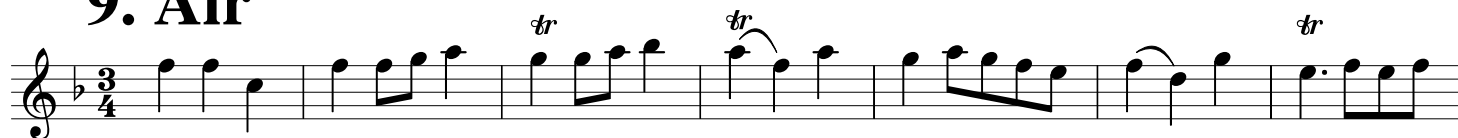
6

11

16

21

9. Air



3. Suite

10. Prélude

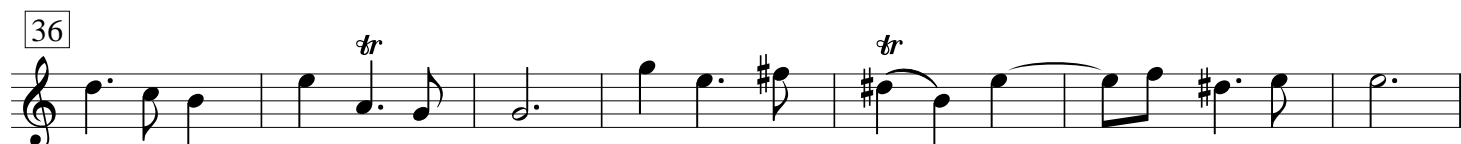


11. Air

Musical score for "11. Air" in C major, 4/4 time. The score consists of five staves of music. The first staff (measures 1-6) includes a first ending bracket. The second staff (measures 7-12) includes a second ending bracket. The third staff (measures 13-18) continues the melody. The fourth staff (measures 19-23) includes a first ending bracket. The fifth staff (measures 24-28) includes a second ending bracket and a *p* (piano) dynamic marking. Trills are marked with *tr* above the notes.

12. Trio

Musical score for "12. Trio" in 3/4 time. The score consists of four staves of music. The first staff (measures 1-7) includes a *p* (piano) dynamic marking. The second staff (measures 8-14) includes a first ending bracket. The third staff (measures 15-21) includes a second ending bracket. The fourth staff (measures 22-28) includes a first ending bracket. Trills are marked with *tr* above the notes.



13. Air



[illegible]

15. Gique

14

Musical notation for exercise 14, measures 1-5. The notation is on a single staff with a treble clef and a key signature of one flat (B-flat). The melody consists of eighth and quarter notes. Measure 1: B-flat, A, G, F, E, D. Measure 2: C, B-flat, A, G, F, E. Measure 3: D, C, B-flat, A, G, F. Measure 4: E, D, C, B-flat, A, G. Measure 5: F, E, D, C, B-flat, A. The exercise ends with a double bar line.

da capo §