

Nicolai Rimsky-Korsakov
Capriccio Espagnole, Op. 34

Trombone I.

I. Alborada.

Vivo e strepitoso.

f A 12 B C 30 *attacca*

II. Variazioni.

Andante con moto 21 19 Poco meno mosso. 28 1 Viol. I. 1 2 3
4 3 3 3
Tempo I. 12 F 15 G 8 3 *rit.* *attacca*

III. Alborada.

Vivo e strepitoso.

f II 12 I *f* K 29 *lunga* *f* *attacca*

Trombone I.

T 18 **U** 12 *Vcl. I. & II.*

f 13 14 15 16

17 18 19 20 *fz* *fz*

2 *fz* *fz* *fz* 18 *ff* *W*

X

Coda.

Vivo. (Tempo di comincio.)

11 *fz* 11 *f* 11 *Z*

Y

Presto.

Nicolai Rimsky-Korsakov
Capriccio Espagnole, Op. 34

Trombone II.

I. Alborada.

f

A 12 B *f*

C 30 *attacca*

II. Variazioni.

Andante con moto. 21 D 19 E Poco meno mosso. 28 Viol. I. 1 2 3 4

3 3

Tempo I. 12 F 15 G 8 3 *rit* *attacca*

III. Alborada.

Vivo e strepitoso. *f*

H 12

Trombone II.

Musical notation for Trombone II, measures 1-29. The piece is in 3/8 time with a key signature of one flat. Measure 1 starts with a forte (*f*) dynamic. Measure 29 features a *fz* dynamic and a *lunga* marking. The section concludes with an *allaccu* marking.

IV. Scena e Canto gitano.

Allegretto.

Musical notation for Trombone II, measures 30-66. The section is marked *Allegretto*. It features several cadenzas: quasi Cadenza (I), Cadenza (II) for Violino Solo, Cadenza (III) for Flauto Solo, Cadenza (IV) for Clarinetto Solo, and Cadenza (V) for Arpa Solo. The tempo is *a tempo*. Measure 30 has a *fz* dynamic. Measure 31 is marked *L*. Measure 32 has a *fz* dynamic. Measure 33 is marked *M*. Measure 34 has a *fz* dynamic. Measure 35 is marked *N*. Measure 36 has a *fz* dynamic. Measure 37 is marked *O*. Measure 38 has a *fz* dynamic. Measure 39 is marked *P*. Measure 40 has a *fz* dynamic. Measure 41 is marked *mf*. Measure 42 has a *fz* dynamic. Measure 43 is marked *mf*. Measure 44 has a *fz* dynamic. Measure 45 is marked *mf*. Measure 46 has a *fz* dynamic. Measure 47 is marked *mf*. Measure 48 has a *fz* dynamic. Measure 49 is marked *mf*. Measure 50 has a *fz* dynamic. Measure 51 is marked *mf*. Measure 52 has a *fz* dynamic. Measure 53 is marked *mf*. Measure 54 has a *fz* dynamic. Measure 55 is marked *mf*. Measure 56 has a *fz* dynamic. Measure 57 is marked *mf*. Measure 58 has a *fz* dynamic. Measure 59 is marked *mf*. Measure 60 has a *fz* dynamic. Measure 61 is marked *mf*. Measure 62 has a *fz* dynamic. Measure 63 is marked *mf*. Measure 64 has a *fz* dynamic. Measure 65 is marked *mf*. Measure 66 has a *fz* dynamic. The section concludes with a *p cresc.* dynamic and an *allaccu* marking.

Trombone II.

V. Fandango asturiano.

Musical score for Trombone II, measures 1-20. The score is in 3/4 time with a key signature of two sharps (F# and C#). It begins with a *ff* dynamic marking. Rehearsal marks U, R, S, T, V, W, and X are placed above the staff. Measure numbers 12, 13, 14, 15, 16, 17, 18, 19, and 20 are indicated below the staff. The piece concludes with a double bar line and a 2/4 time signature.

Coda.

Vivo. (Tempo di comincio.)

Musical score for Trombone II, Coda section, measures 21-30. The score is in 2/4 time with a key signature of two sharps. It begins with a *f* dynamic marking. Rehearsal marks Y and Z are placed above the staff. Measure numbers 11 and 11 are indicated below the staff. The section concludes with a double bar line.

Presto.

Nicolai Rimsky-Korsakov
Capriccio Espagnole, Op. 34

Trombone III.

I. Alborada.

Vivo e strepitoso.

f

A 12 B *f*

C 30 *attacca*

II. Variazioni.

Andante con moto.

21 D 19 E Poco più mosso. Violini.

28 1 2 3 4

4 4

Tempo I. 12 F 15 G 8 3 *rit.* *attacca*

p

III. Alborada.

Vivo e strepitoso.

f

H 12 I *f*

K 29 *lunga* *fz* *attacca*

Trombone III.

IV. Scena e Canto gitano.

Allegretto.

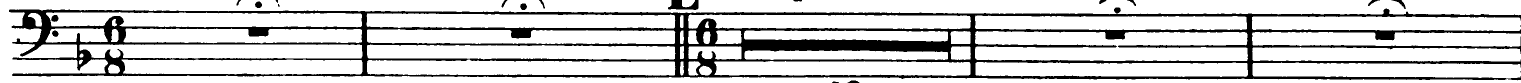
quasi Cadenza (I)

Cadenza (II) Violino Solo

L *a tempo*

Cadenza (III) Flauto

Cadenza (IV) Clarinetto



10

a tempo

Cadenza (V) Arpa

a tempo



5



M

9



f

f



N

22

f



O

14

P

6

Ob. Fl.

7

8

5



10

f



4

mf



p cresc.

allacca

V. Fandango asturiano.



ff

20

R

25

S

40

Trombone III.

Musical score for Trombone III, measures 13-20. The score is written in bass clef with a key signature of two sharps (F# and C#). Measure 13 is marked with a 'T' and a '18' above it. Measure 14 is marked with a 'U' and a '12' above it. Measure 15 is marked with 'Viol. I.u. II.' above it. Measure 16 is marked with a '2' above it. Measure 17 is marked with a '17' below it. Measure 18 is marked with a '18' below it. Measure 19 is marked with a '19' below it. Measure 20 is marked with a '20' below it. Measure 21 is marked with a '2' above it. Measure 22 is marked with a 'V' above it. Measure 23 is marked with a '18' above it. Measure 24 is marked with a 'W' above it. Measure 25 is marked with an 'X' above it. The score includes various musical notations such as slurs, accents, and dynamic markings like *fz*.

Coda.

Vivo. (Tempo de comincio)

Musical score for Coda, measures 25-31. The score is written in bass clef with a key signature of two sharps (F# and C#). Measure 25 is marked with a 'Y' above it. Measure 26 is marked with a '11' above it. Measure 27 is marked with a 'Z' above it. The score includes various musical notations such as slurs, accents, and dynamic markings like *fz*.

Prèsto.

Musical score for Prèsto, measures 32-38. The score is written in bass clef with a key signature of two sharps (F# and C#). The score includes various musical notations such as slurs, accents, and dynamic markings like *fz*.

Nicolai Rimsky-Korsakov
Capriccio Espagnole, Op. 34

Tuba.

I. Alborado.

Vivo e strepitoso.

A 12 B C 30 *attacca*

II. Variazioni.

Andante con moto. D

19

E Poco meno mosso.

4

21 33 4 5 6 7 8 *rit.* *attacca*

III. Alborado.

Vivo e strepitoso.

H 12 I K 29 *lunga* *f* *attacca*

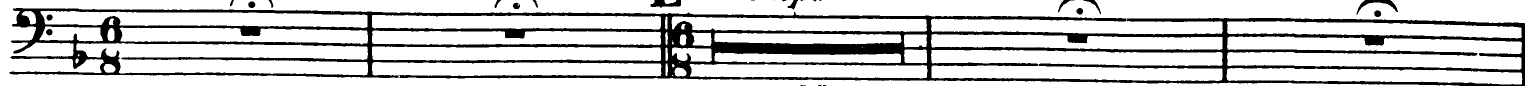
Tuba.

IV. Scena e Canto gitano.

Allegretto.

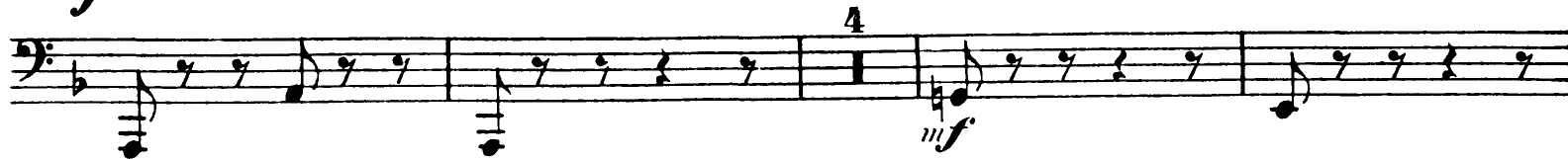
quasi Cadenza (I) Cadenza (II) Violino Solo. **L** *a tempo*

Cadenza (III) Flauto Solo. Cadenza (IV) Clarinette Solo.



10

a tempo Cadenza (V) Arpa Solo *a tempo*



V. Fandango asturiano.

20 **R** 25



Tuba.

S 40 T 18 U 12 Viol. I u. II. 13 14 15 16

17 18 19 20 2

2 V 18 III. W 19 f

X

Coda.
Vivo. (Tempo di comincio.)

2 4 Y

11

Z 1 1 1 1 1 Presto.