

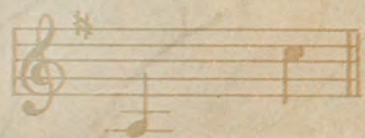
BY THE COMPOSER OF THE FAMOUS BALLAD "NINE"

Mary Abrams

Olive Katherine McCluron

SHIP OF MY DREAMS

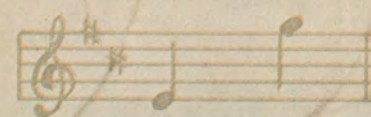
BASS or CONTRALTO in G.



BARITONE or ALTO in B \flat



HIGH BAR. or MEZZO SOP. in D.



TENOR or SOPRANO in F.



POEM BY

ARTHUR J. LAMB

MUSIC BY

ALFRED SOLMAN 5

Respectfully inscribed to Miss Irene Hunt, New York City.

2

SHIP OF MY DREAMS.

CONTRALTO or BASS in G

Words by
ARTHUR J. LAMB.

Music by
ALFRED SOLMAN.
Composer of "MINE"

Moderato.

The piano introduction consists of two staves. The right hand plays a melody in G major, starting with a quarter note G, followed by eighth notes A-B-A, quarter notes C-D-C, quarter notes E-F-E, and quarter notes G-A-G. The left hand plays a rhythmic accompaniment of eighth notes: G-A-B-A-G, G-A-B-A-G, G-A-B-A-G, and G-A-B-A-G. The tempo is marked 'Moderato'.

A - gain I ling - er by the sad sea - shore, Where
My ship of dreams is filled with thoughts of you, For

The piano accompaniment for the first verse continues the melody from the introduction. The right hand plays the vocal line with accompaniment, and the left hand provides harmonic support. The tempo is marked 'il basso ben marcato'.

il basso ben marcato

last we said good - by; A - gain I'm dream-ing of the
true love ne'er for - gets; My ship of dreams is filled with

The piano accompaniment for the second verse continues the melody. The right hand plays the vocal line with accompaniment, and the left hand provides harmonic support.

Copyright 1913 by The Joe Morris Music Co. 130 W. 37th Street New York.

The Publishers reserve the right to the use of this Music or Melody for Mechanical Instruments.

International Copyright Secured

All rights reserved.

Albert & Sons Australian Agents Sidney.

days of yore And love that can - not die. A -
 long - ings too, For true love still re - grets. Re-

gain I watch the state-ly ves - - sels glide A -
 grets that you and I should e - - ver part, And

cross the silv' - ry spray, But where's the ship of which I
 yet at times it seems, That you and I have al - ways

dream at night, Why does it stay so long a - way?
 been, sweet-heart, To - geth-er on my ship of dreams!

REFRAIN.
Valse lente. *With a broad swing.*

Bring back the one I love, Ship

molto espressivo.

of my dreams Speed home a -

cresc.

cross the foam, Where star - light gleams!

My heart by night and day

dolce.

So wea - ry seems Bring

cresc.

Detailed description: This system contains the first two lines of music. The vocal line (treble clef) has a key signature of one sharp (F#) and a 4/4 time signature. The lyrics are "So wea - ry seems Bring". The piano accompaniment (grand staff) features a right hand with chords and a left hand with a steady bass line. A *cresc.* (crescendo) marking is present in the piano part.

back the one I love, Ship of my

f *p*

Detailed description: This system contains the third and fourth lines of music. The vocal line continues with the lyrics "back the one I love, Ship of my". The piano accompaniment includes dynamic markings of *f* (forte) and *p* (piano). The piano part features a mix of chords and moving lines.

dreams Bring back the one I

f

Detailed description: This system contains the fifth and sixth lines of music. The vocal line has the lyrics "dreams Bring back the one I". The piano accompaniment features a *f* (forte) dynamic marking. The piano part continues with harmonic support for the vocal melody.

love, Ship of my dreams!

lento.

Detailed description: This system contains the seventh and eighth lines of music. The vocal line concludes with the lyrics "love, Ship of my dreams!". The piano accompaniment features a *lento.* (ritardando) marking. The piano part ends with sustained chords.

It is needless to comment on the success of Alfred Solman's "IF I HAD A THOUSAND LIVES TO LIVE," but many more friends than the above song has won, are acclaiming the spontaneous triumph of the same composer's most recent composition—a ballad of the heart-entitled, "MINE." • As simple as it's title, yet most effective for the singer, the song "MINE" is a distinctive feature wherever performed, and is destined to become a favorite with every music lover.

MINE

Refrain

Music by
ALFRED SOLMAN

Animato

Mine when the dawn is break - ing Mine in my dreams at

of a tempo

night, Mine when the birds are

il Basso marcato

wak - ing, Mine when the stars are

A ritard

cresc. ut

a tempo

bright, Mine while the years are fly - ing,

a tempo animato *ff* *mf* *mf*

valla *valla* *valla* *valla*

Copyright 1911 by Carl Laemmle Music Co.
International Copyright Secured.
Copyright transferred to Joe Morris Music Co. 1923.

"MINE" IS PUBLISHED IN 4 KEYS.

"MINE" IS FOR SALE, WHEREVER MUSIC IS SOLD.

PUBLISHED BY
JOE MORRIS MUSIC CO.,
130 WEST 37TH. ST., NEW YORK CITY.