

# Schuler - Concertino

Violin II 1

Opus 5

Adolf Huber  
Matthew Dakoutros

**Allegro maestoso**

**ff** **p**

**p**

**p**

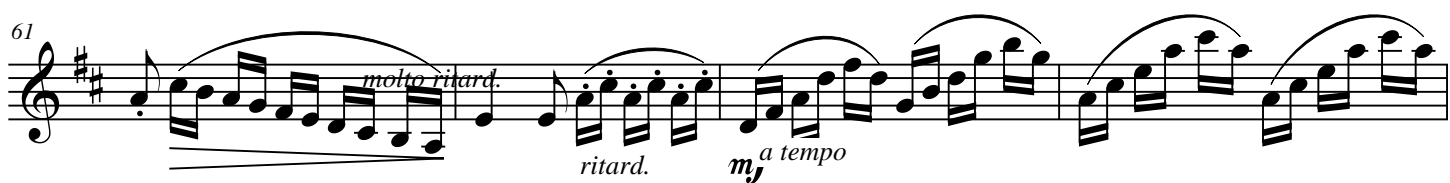
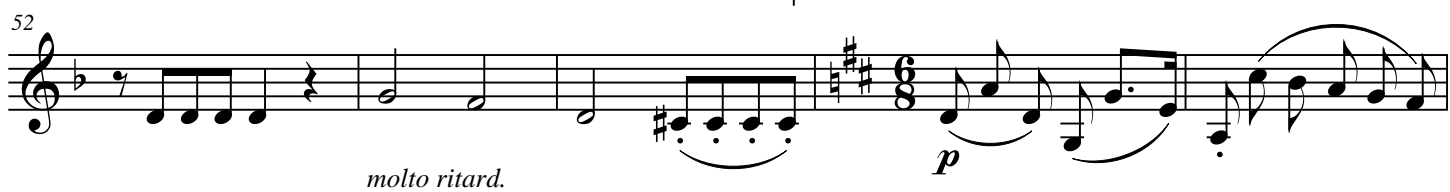
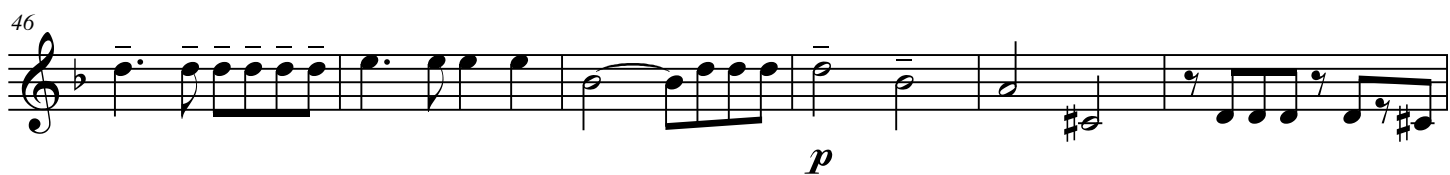
**f** **p** **f** *ritard.*

*a tempo* **p**

*a tempo* **p** **f** *ritard.*

*a tempo* **p** *gracioso* **pp** *ritard.* **mf**

*a tempo*



*a tempo*

*a tempo*

*ritard.*

*ritard.*

*ritard.*

77 *ritard.* *p*

81 *p*

86 *ritard.* *p*

91 *ritard.* *mf* *cresc.*

96 *f*

101 *a tempo* *ritard.*

106 *f* *a tempo*

111 *ritard.* *a tempo* *p*

*ritard.*

*a tempo*

*ritard.*

116

117 118 119 120 121

*cresc.* *ff*

Detailed description: This musical staff contains measures 116 through 121. Measure 116 begins with a treble clef, a key signature of one flat (B-flat), and a common time signature. It features a series of eighth notes with stems pointing down. Measures 117 through 121 continue with a melodic line of eighth and sixteenth notes, some with stems pointing up and some down. A dashed line with the word 'cresc.' (crescendo) is placed below the staff, starting under measure 118 and ending under measure 121. The dynamic 'ff' (fortissimo) is written below the staff at the end of measure 121. The staff concludes with a double bar line.

122

122

Detailed description: This musical staff contains measure 122. It begins with a treble clef, a key signature of one flat (B-flat), and a common time signature. The measure contains a single eighth note with a stem pointing down. The staff concludes with a double bar line.