

Contrabass

Brahms/Johnson

1 Non troppo presto [$\text{♩}=110$]

[illegible]

41 **Var. 2**

f 10

55

p

pizz.

The bass line of 'The Rose Tree' is written on a single staff with a bass clef. It consists of six measures. The first three measures are: G2 (quarter), A2 (quarter), B2 (quarter), G2 (quarter), F2 (quarter), E2 (quarter). The last three measures are: D2 (quarter), C2 (quarter), B1 (quarter), A1 (quarter), G1 (quarter), F1 (quarter). The notes are written as eighth notes.

[illegible]

Contrabass

90 **Var. 4** 16 *arco* *mf*

109

113 **Var. 5** *pizz.* *p*

120

128 **Var. 6** 2 1. 2. 4 8 **Var. 7** *arco* *f*

145

151

157 1. 2.

Var. 8 9 **Var. 9** 8 *f pp* *fp*

184 6 1. 2. rit. **Var. 10** *mp*

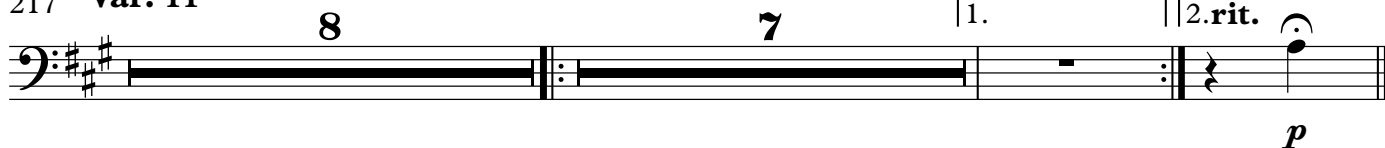
199



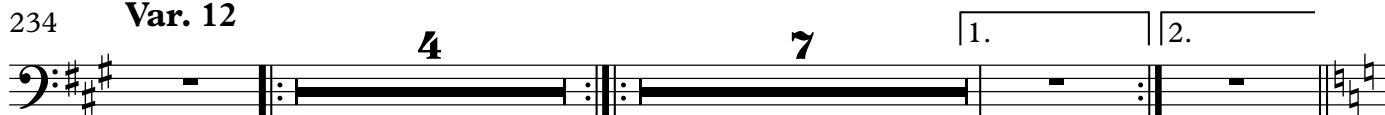
209



217 **Var. 11**



234 **Var. 12**



Var. 13

Vivace et scherzando

248 pizz.



255



Var. 14

261 **Allegro**

arco



266



271



276



