

# LE JOURNAL DU PRINTEMPS

## Suite 1 Ouverture

**Taille**

*Johann Kaspar  
Ferdinand Fischer*

7

13

17

21

25

29

33

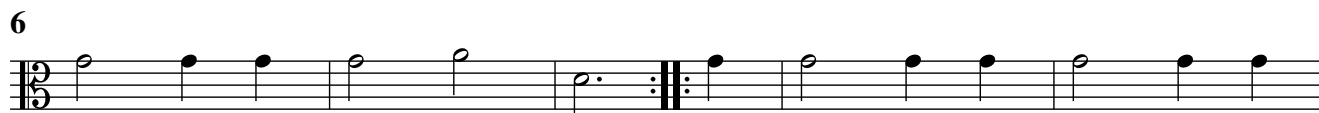
## Marche

Musical score for 'Marche' in Taille. The score consists of three staves. The first staff contains measures 1 through 5. The second staff contains measures 6 through 11, with a repeat sign at the beginning of measure 6. The third staff contains measures 12 through 15, with first and second endings marked at the end of measure 15.

## Air des Combattans

Musical score for 'Air des Combattans' in Taille. The score consists of nine staves. The first staff is marked 'Vite' and contains measures 1 through 5. The second staff contains measures 6 through 10. The third staff contains measures 11 through 16. The fourth staff contains measures 17 through 21. The fifth staff contains measures 22 through 27. The sixth staff contains measures 28 through 32. The seventh staff contains measures 33 through 37. The eighth staff contains measures 38 through 42, ending with a fermata on the final note.

# Rigaudon



# Menuet



## Chaconne



75



83



89



95



102



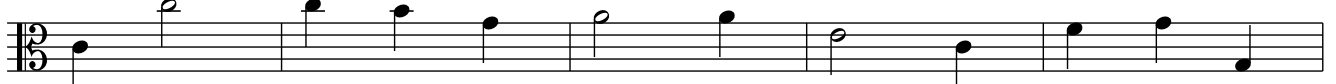
110



118



124



129



137



*Johann Kaspar  
Ferdinand Fischer*

# Taille



6



12



17



27



36



44



51



# Plainte

Lentement



9



18



26



34



43





# Bourrée

Musical notation for the Bourrée section, measures 1-11. The notation is in 2/5 time, key of A major (one sharp). The melody consists of eighth and quarter notes, with a repeat sign at measure 6. Measure 11 ends with a double bar line and repeat dots.

# Trio

Musical notation for the Trio section, measures 1-13. The notation is in 2/5 time, key of A major. The melody features a mix of eighth and quarter notes. Measure 7 contains a repeat sign. Measure 13 ends with a double bar line and repeat dots.

# Bourrée da capo

# Menuet

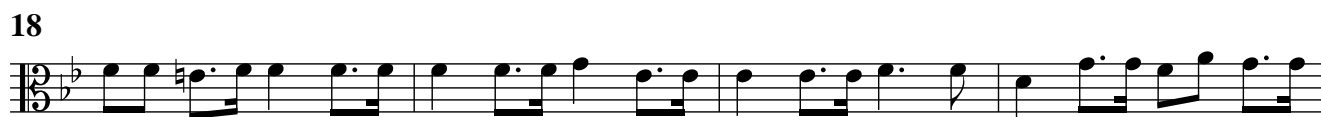
Musical notation for the Menuet section, measures 1-17. The notation is in 3/4 time, key of A major. The melody is composed of half and quarter notes. Measure 9 starts with a repeat sign. Measures 16 and 17 include first and second endings, indicated by bracketed numbers 1 and 2. Measure 17 ends with a double bar line and repeat dots.

# Suite 3

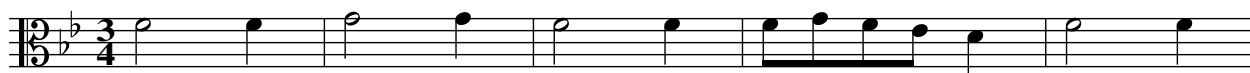
## Ouverture

*Johann Kaspar  
Ferdinand Fischer*

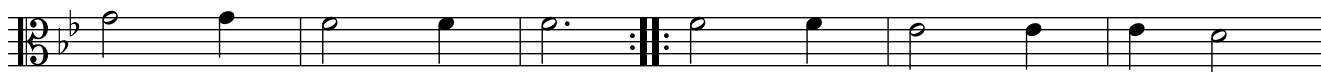
### Taille



# Menuet



6



12



# Gavotte



5



10



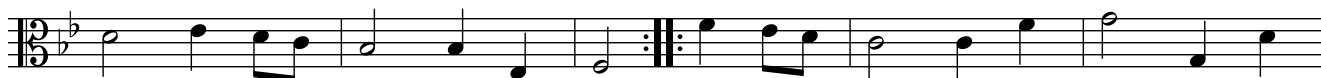
15



# Trio



6



11



# Gavotte da capo

## Chaconne



6



12



18



24



30



36



42



48



52



57



62



67



72



77



84



91



98



105



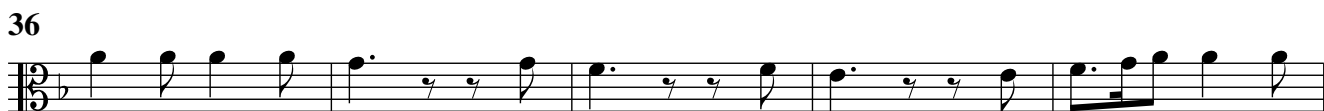
111



Taille  
**Suite 4**  
 Ouverture

*Johann Kaspar  
 Ferdinand Fischer*

**Taille**



# Entrée

5

10

15

20

# Rondeau

7

13

20

27

33

40

Fine

## Gavotte



## Menuet



## Passacaille



38



44



52



60



68



75



82



90



97



102



108



# Suite 5

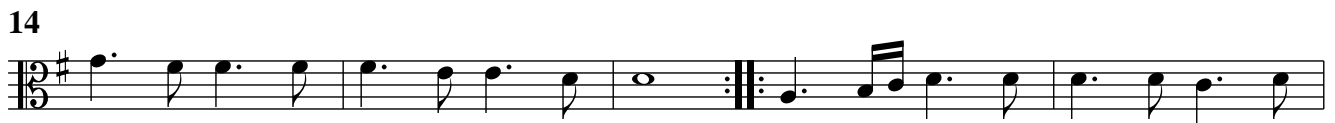
## Ouverture

### Taille

Johann Kaspar  
Ferdinand Fischer



# Entrée



## Chaconne

6

12

19

26

32

38

44

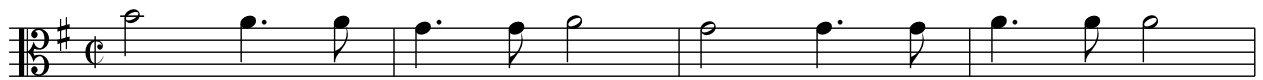
50

57

63

Fin

## Traquenard



## Menuet



# Suite 6

## Ouverture

*Johann Kaspar  
Ferdinand Fischer*

### Taille



Taille  
Brandle

23

6

12

19

25

33

1 2 Gay

1 2

Detailed description: This block contains the musical notation for the 'Brandle' section in Taille. It consists of six staves of music. The first staff is measures 1-5. The second staff is measures 6-11, starting with a measure rest of 6. The third staff is measures 12-18, starting with a repeat sign. The fourth staff is measures 19-24, with first and second endings marked above measures 23 and 24. The fifth staff is measures 25-32, starting with a repeat sign. The sixth staff is measures 33-36, with first and second endings marked above measures 35 and 36. The key signature has one flat (B-flat), and the time signature is 2/4.

Amener

8

16

Detailed description: This block contains the musical notation for the 'Amener' section. It consists of two staves of music. The first staff is measures 1-7, in 3/4 time. The second staff is measures 8-15, in 2/4 time, starting with a measure rest of 7. The key signature has one flat (B-flat).

Gavotte

6

Detailed description: This block contains the musical notation for the 'Gavotte' section. It consists of two staves of music. The first staff is measures 1-5, in 2/4 time. The second staff is measures 6-11, in 2/4 time, starting with a measure rest of 5. The key signature has one flat (B-flat).

Taille  
Courante

5

9

The Courante piece is written in G minor (two flats) and 3/2 time. It consists of 9 measures. The notation includes a key signature of two flats, a 3/2 time signature, and various note values including quarter, eighth, and sixteenth notes, as well as rests and repeat signs.

## Sarabande

9

The Sarabande piece is written in G minor (two flats) and 3/4 time. It consists of 9 measures. The notation includes a key signature of two flats, a 3/4 time signature, and various note values including quarter, eighth, and sixteenth notes, as well as rests and repeat signs.

## Bourrée

5

11

The Bourrée piece is written in G minor (two flats) and common time (C). It consists of 11 measures. The notation includes a key signature of two flats, a common time signature, and various note values including quarter, eighth, and sixteenth notes, as well as rests and repeat signs.

## Menuet

7

12

The Menuet piece is written in G minor (two flats) and 3/4 time. It consists of 12 measures. The notation includes a key signature of two flats, a 3/4 time signature, and various note values including quarter, eighth, and sixteenth notes, as well as rests and repeat signs. First and second endings are indicated by numbers 1 and 2 above the staff.

# Suite 7

## Ouverture

**Taille***Johann Kaspar  
Ferdinand Fischer*

## Passacaille



87



94



101



108



114



## Bourrée



5



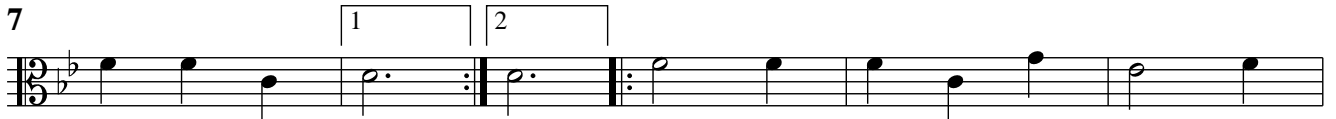
10



## Menuet



7



12



18



# Suite 8

## Ouverture

*Johann Kaspar  
Ferdinand Fischer*

### Taille

6

12

17

21

25

29

33

37

41

45

52



59



## Entrée



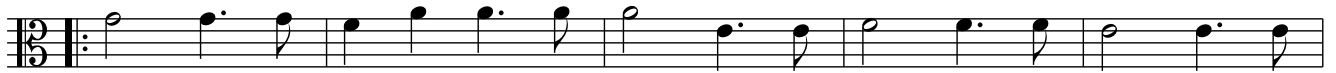
6



11



15



20



24



## Canaries



5



10



## Gavotte en Rondeau



8



16



24



32



41



## Passepied



8



17



Taille  
Echo

31

9

18

26

36

44

*f p f p f p*

*f p f p f p*

*f p*

*f p f p*

*f p*

Menuet

11

Trio

11

Menuet da capo