

Oboe Primo

Sinfonia

RV 122

1. Allegro

Antonio Vivaldi
(1678 - 1741)

4

7

10

13

17

23

26

29

34

p

f

p

f

f

V.S.

[illegible]

41



Measure 41 continues the melodic and harmonic development. It features a treble clef and a key signature of two sharps (F# and C#). The notation is dense with many beamed sixteenth notes, creating a rapid, flowing melody. The measure is divided into two main groups of notes, each with a strong rhythmic pulse.


44



47



51



55

p

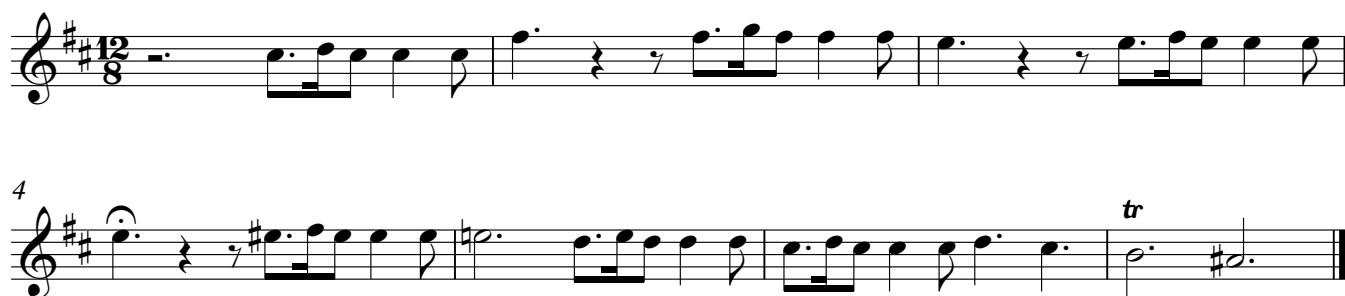
58

Measures 58-60 of the piece. Measure 58: Treble clef, key of D major (two sharps). The melody consists of eighth notes: D4, E4, F#4, G4, A4, B4, C5, B4, A4, G4, F#4, E4, D4. Measure 59: Treble clef, key of D major. The melody starts with a quarter rest, followed by an eighth note D4, then eighth notes E4, F#4, G4, A4, B4, C5, B4, A4, G4, F#4, E4, D4. Measure 60: Treble clef, key of D major. The melody consists of eighth notes: D4, E4, F#4, G4, A4, B4, C5, B4, A4, G4, F#4, E4, D4. A dynamic marking 'f' (forte) is placed below the first eighth note of measure 60.

61



2. Largo



3. Presto

Five staves of music in treble clef, key of D major (two sharps), and 3/8 time. The first staff contains measures 1 through 6. The second staff, starting with a measure number '10' above the first measure, contains measures 7 through 12 and includes a repeat sign. The third staff, starting with a measure number '20' above the first measure, contains measures 13 through 16 and includes a trill (tr) above the second measure. The fourth staff, starting with a measure number '25' above the first measure, contains measures 17 through 21. The piece concludes with a double bar line.