

Clarinet 1 in A

A Venezuelan Christmas

(Three carols)

Johnson

Freely **Allegro**

3

f *mf*

12

mp

20

28

mp

38

44

49

6

55 *f* **2**

66 *mp* **4**

77 *mf*

83

89 *mf* *mp*

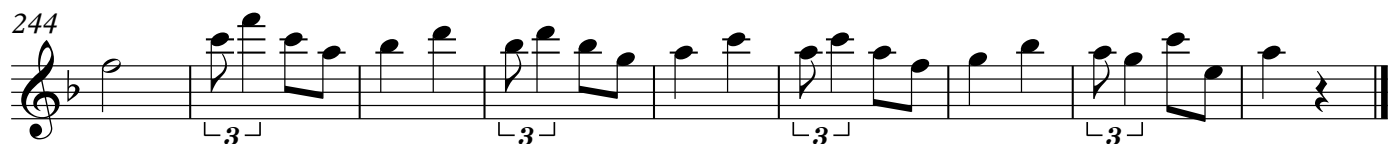
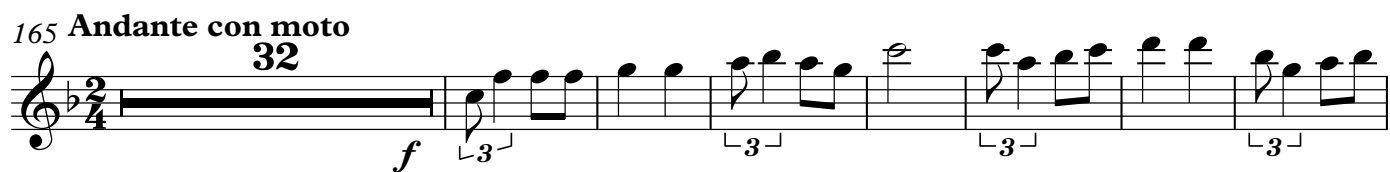
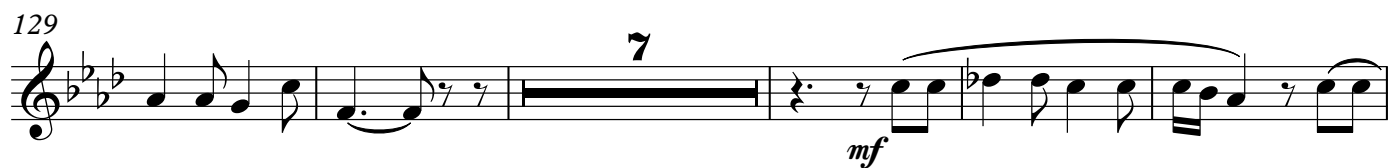
98

105 **5**

114 **Moderato** *mf*

120 *mf* **3**

The musical score for Clarinet 1 in A, measures 55 to 120, is written in treble clef with a key signature of two flats (B-flat and E-flat). The score includes various musical notations such as triplets, slurs, and dynamic markings. Measure 55 starts with a forte (f) dynamic and a triplet of eighth notes. Measure 66 has a mezzo-piano (mp) dynamic and a fourth note. Measure 77 has a mezzo-forte (mf) dynamic and a triplet. Measure 83 continues the triplet pattern. Measure 89 has mf and mp dynamics. Measure 98 continues the triplet pattern. Measure 105 has a fifth note. Measure 114 is marked 'Moderato' and 'mf'. Measure 120 has a mezzo-forte (mf) dynamic and a triplet of eighth notes.



Clarinet 2 in A

A Venezuelan Christmas

(Three carols)

Johnson

The image displays a musical score for a piano piece, likely 'The Swan' by Camille Saint-Saëns. The score is written on a single staff with a treble clef and a key signature of one flat (B-flat). The time signature is 6/8, indicated by a '6' over the staff and an '8' below it. The piece is divided into two main sections: 'Freely' and 'Allegro'. The 'Freely' section begins with a tempo marking of 'Ad libitum' and a dynamic of 'f' (forte). The 'Allegro' section follows, marked with a tempo of 'Allegro' and a dynamic of 'mf' (mezzo-forte). The score includes various musical notations such as triplets (indicated by a '3' over a bracket), slurs, and dynamic markings like 'f', 'mf', and 'mp' (mezzo-piano). The piece concludes with a final measure marked with a double bar line and a '6' below the staff, indicating the end of the 6/8 measure.

55 *f*

65 *mp*

76 *mf*

83

89 *mf* *mp*

97

104 *mf*

114 **Moderato** *mf*

131 *mf*

143

3

mp

This musical staff contains measures 143 through 151. It begins with a whole rest followed by a triplet of eighth notes. The remainder of the staff consists of eighth notes, many of which are beamed in pairs. The dynamic marking *mp* is placed below the first eighth note.

152

4

This musical staff contains measures 152 through 161. It features eighth notes, some beamed in pairs, and a triplet of eighth notes. A whole rest is present in measure 158. The dynamic marking *mp* from the previous staff continues.

162

Andante con moto

44

f

This musical staff contains measures 162 through 171. It starts with eighth notes and a half note, followed by a double bar line. The key signature changes to two flats, and the time signature changes to 2/4. The staff then contains a whole rest, a triplet of eighth notes, and eighth notes. The dynamic marking *f* is placed below the first triplet.

212

mf

This musical staff contains measures 212 through 220. It features eighth notes, many beamed in pairs, and triplet markings over groups of eighth notes. The dynamic marking *mf* is placed below the staff.

221

12

ff

This musical staff contains measures 221 through 240. It includes eighth notes, triplet markings, and a whole rest. The dynamic marking *ff* is placed below the staff.

241

This musical staff contains measures 241 through 246. It features eighth notes, many beamed in pairs, and triplet markings over groups of eighth notes.

247

This musical staff contains measures 247 through 256. It features eighth notes, many beamed in pairs, and triplet markings over groups of eighth notes, ending with a double bar line.