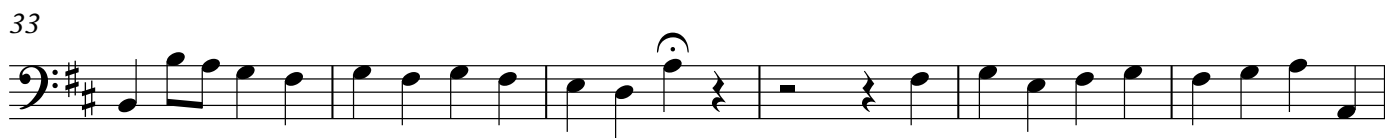
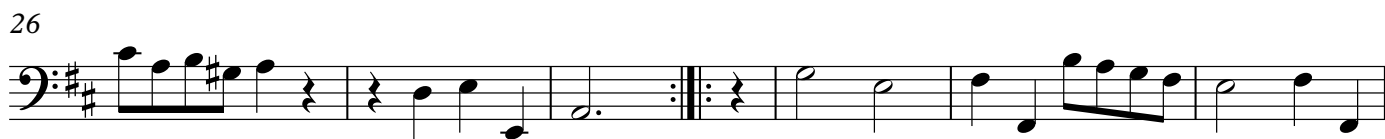
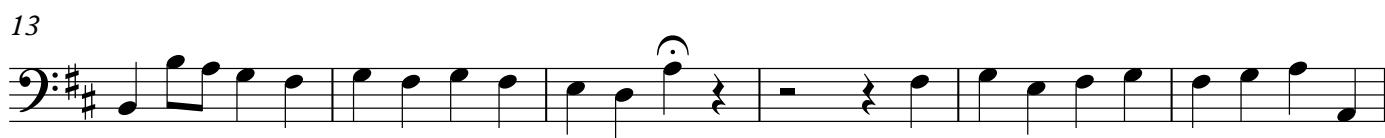
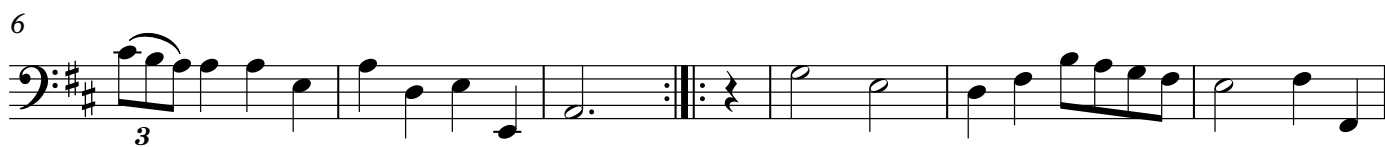


Bass

I - *The Power of Beauty* **Allegrementa**



II - *Why heaves my fond Bosom*

7



14



20

Variation



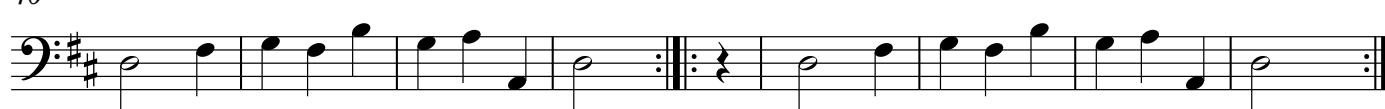
26



31



40



III - *The Modest Question*

8



17



25

Variation



33

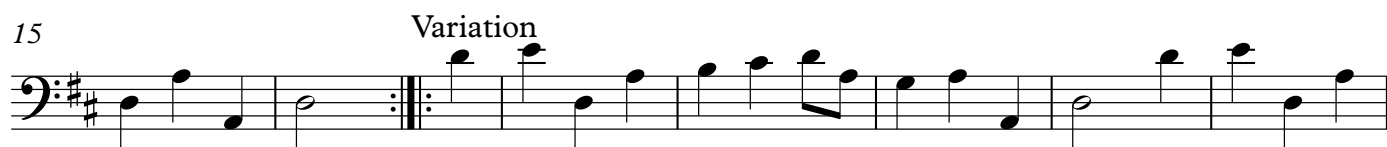


42



48



IV - *Hosiers Ghosts*

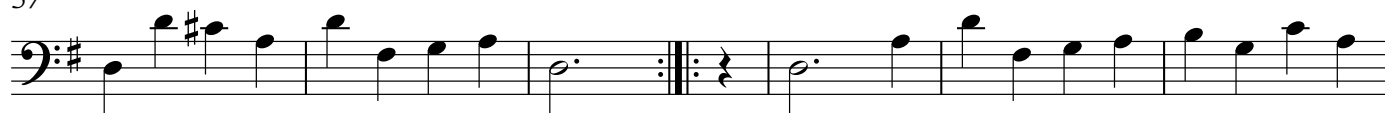
V - *The faithful Shepherdess*
Lively but not too brisk

Bass

5



57



64

Variation



71



77



84



90





7



14



20

Variation



27



33



40



45



VII - *Arno's Vale*

11



22



32

Variation



40



47



58



VIII - *Cease your Funning*

D.C.



9 Variation



17



24



29



33

Giga

37



41



45

Minuet

56

Da Capo



IX - *Bumpers Esquire Jones*

7



13



18 Variation



24



30



37



45



X - Stella and Flavia

12



21



31

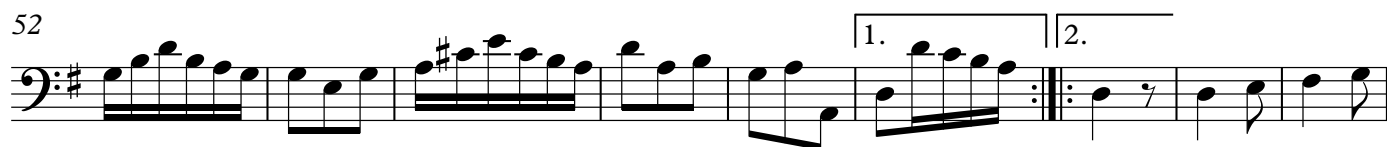
Variation



41



52

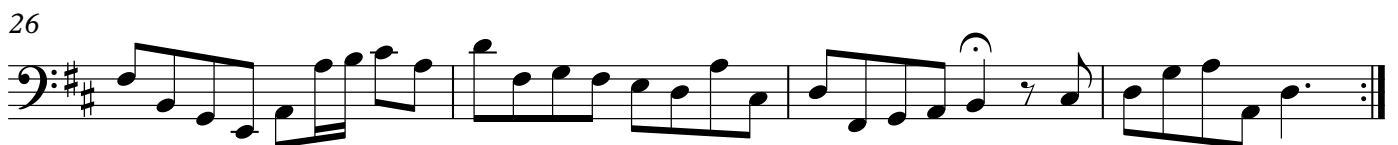
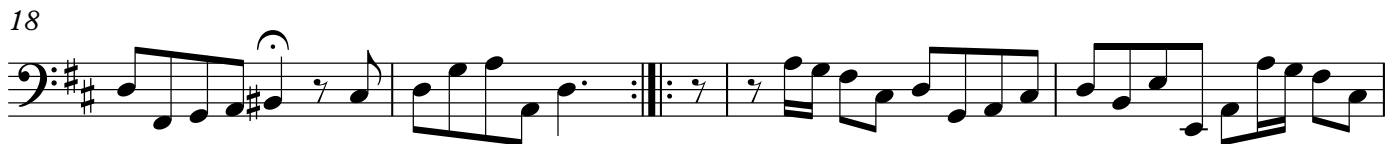


61

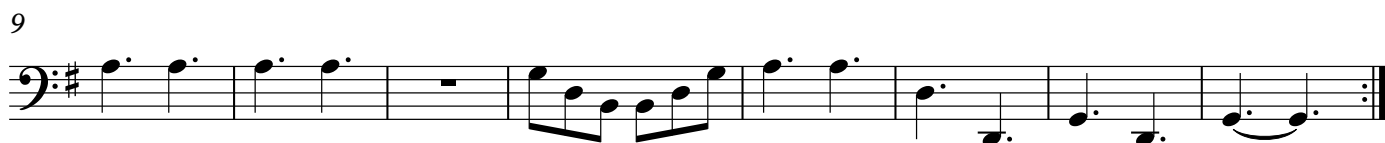


67

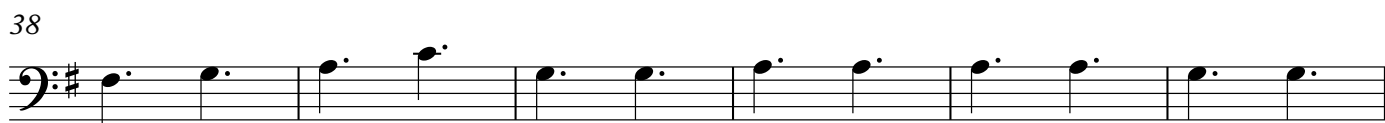
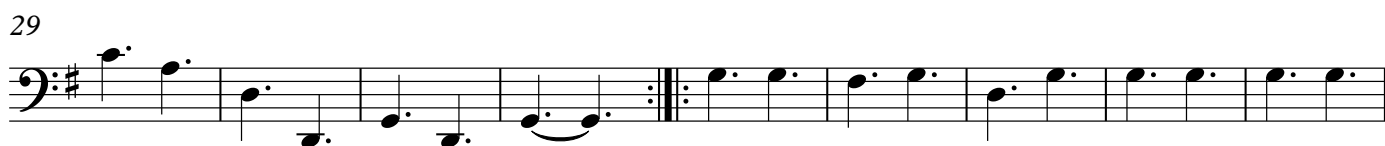


XI - *The Generous Confession*

XII - *Generous Love*

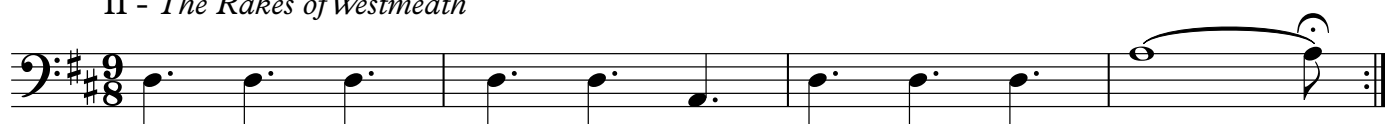
I - *Balin a mone*

17 Variation



14

Bass

II - *The Rakes of Westmeath*

5



9 Variation



13



17



21



25

Da Capo



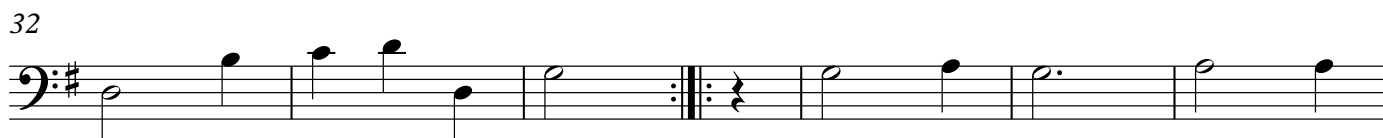
Slow
III - *Molly St. George*

Bass

15



26 Variation



16

Bass

IV - *My Nanny O*

8



14



19

Variation
Presto

26



33



40



Bass

6

11

16

20

The bass line of 'The Rose Tree' is written in G major (one sharp) and 2/4 time. It consists of 12 measures. The first measure contains a dotted quarter note G2, an eighth note A2, and a dotted quarter note B2. The second measure contains a dotted quarter note C3, an eighth note D3, and a dotted quarter note E3. The third measure contains a dotted quarter note F3, an eighth note G3, and a dotted quarter note A3. The fourth measure contains a dotted quarter note B3, an eighth note C4, and a dotted quarter note D4. The fifth measure contains a dotted quarter note E4, an eighth note F4, and a dotted quarter note G4. The sixth measure contains a dotted quarter note A4, an eighth note B4, and a dotted quarter note C5. The seventh measure contains a dotted quarter note D5, an eighth note E5, and a dotted quarter note F5. The eighth measure contains a dotted quarter note G5, an eighth note A5, and a dotted quarter note B5. The ninth measure contains a dotted quarter note C6, an eighth note D6, and a dotted quarter note E6. The tenth measure contains a dotted quarter note F6, an eighth note G6, and a dotted quarter note A6. The eleventh measure contains a dotted quarter note B6, an eighth note C7, and a dotted quarter note D7. The twelfth measure contains a dotted quarter note E7, an eighth note F7, and a dotted quarter note G7.

Variation

The bass line of 'The Rose Tree' is written in G major (one sharp) and 2/4 time. It consists of 12 measures. The first measure has a whole note G2. The second measure has a whole note A2. The third measure has a whole note B2. The fourth measure has a half note G2 and a half rest. The fifth measure is a double bar line. The sixth measure has a whole note G2. The seventh measure has a quarter note A2 and a quarter note B2. The eighth measure has a quarter note C3 and a quarter note B2. The ninth measure has a quarter note A2 and a quarter note G2. The tenth measure has a quarter note F#2 and a quarter note E2. The eleventh measure has a quarter note D2 and a quarter note C3. The twelfth measure has a whole note B2.

32

[illegible]

38

43

48

The bass line of 'The Rose Tree' is written in G major (one sharp) and 2/4 time. It consists of 10 measures. The notes are: G2 (half), A2 (half), B2 (quarter), A2 (quarter), G2 (half), F#2 (half), E2 (quarter), D2 (quarter), C2 (half), and B1 (half). The piece ends with a double bar line and repeat dots.

VI - *Planks of Connaught*

7



14



21



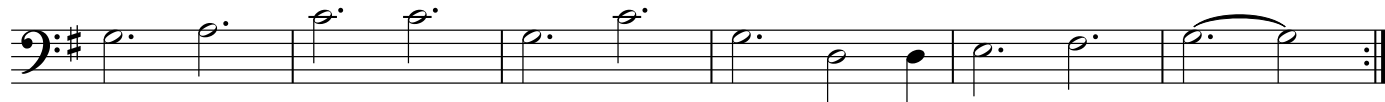
27 Variation



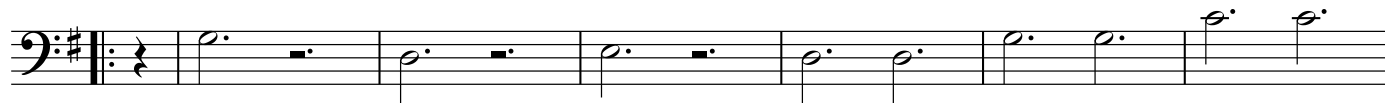
33



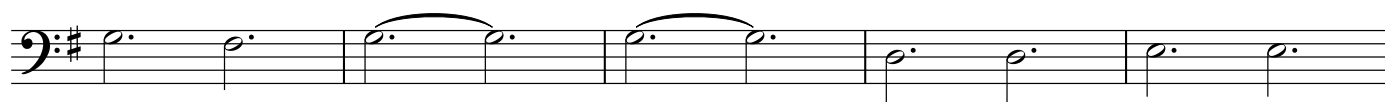
39



45



52

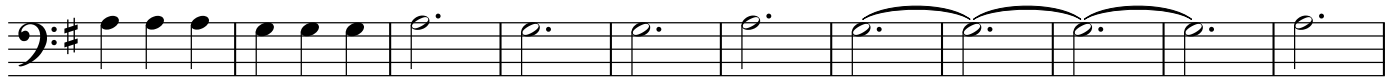


57



VII - *The dangling of the Irish Bearn*

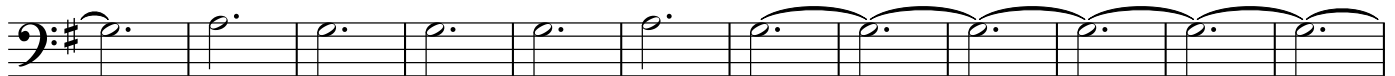
12



23



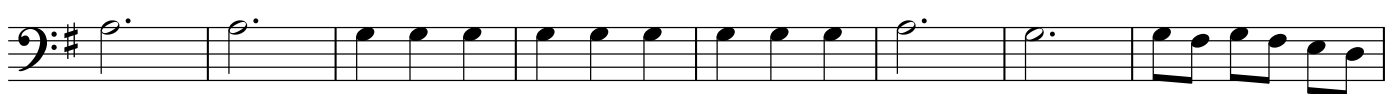
33



45



57



65



74



VIII - *The Irish Ragg*

IX - *Thomas Burk*

7



14



19



24



31



37



22

X - Plea Rorkeh na Rourkough

Bass

Brisk

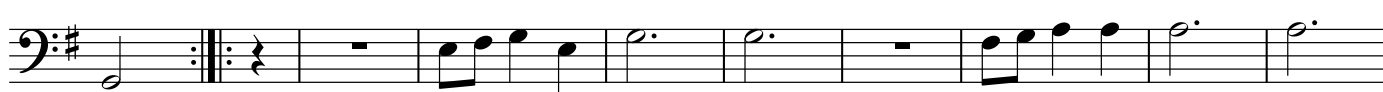
7



16



24



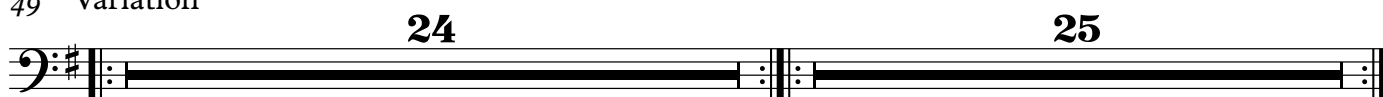
33



41



49 Variation



XI - *The Rakes of Mallow*

24

XII - *The Fin Galian's Dance*
Vivace

Bass



9



16



23



31

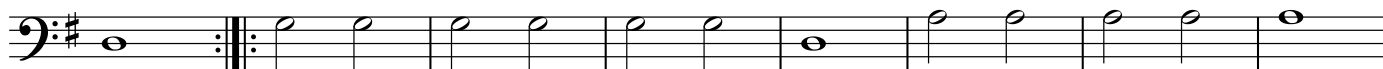
Variation



40



48



56



61

Da Capo

