

La Catedral

arr. for viola solo

I. Preludio saudade

Lento

6

11

15

19

24

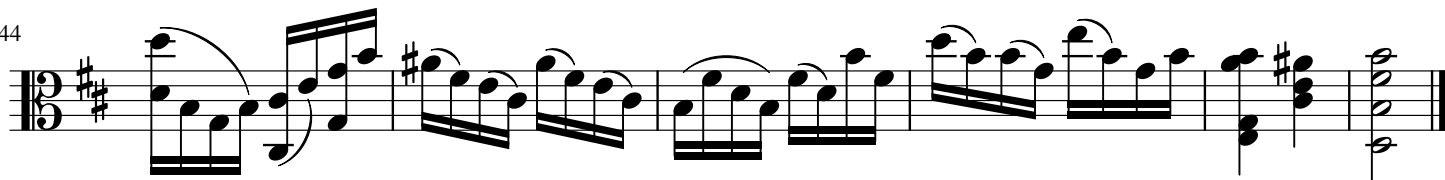
29

34

39

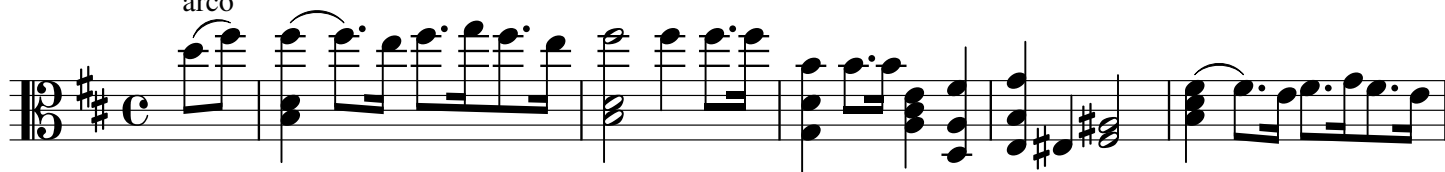


44



II. Andante religioso

arco



7



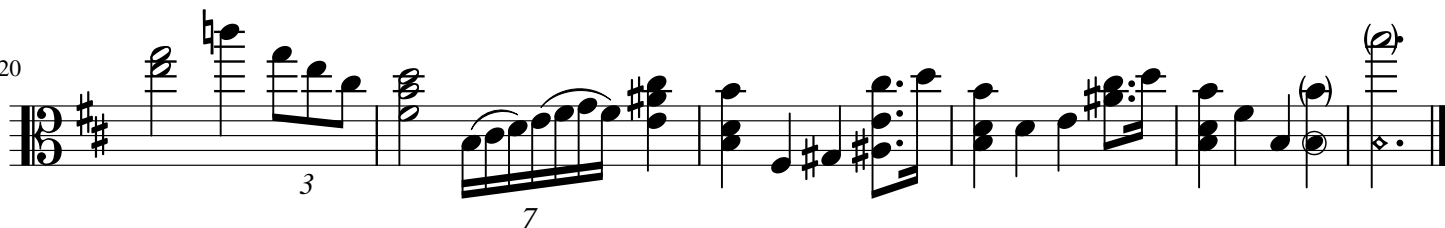
12



16



20



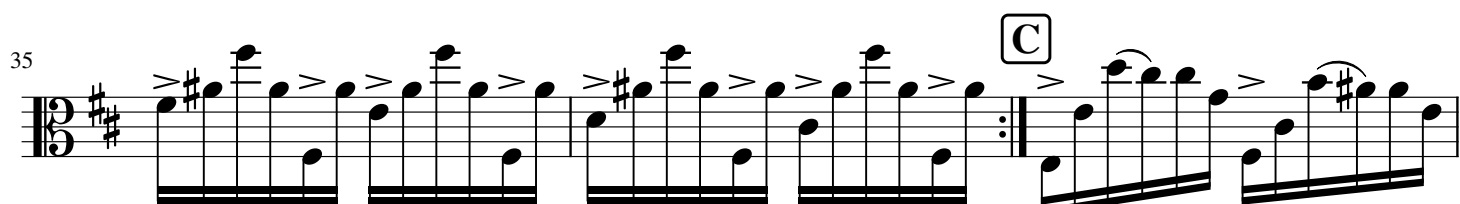
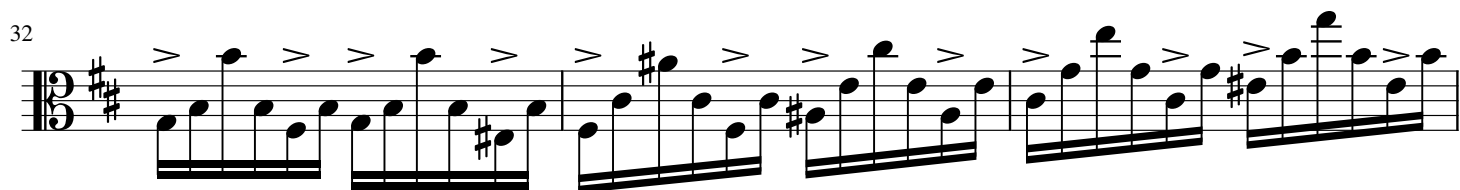
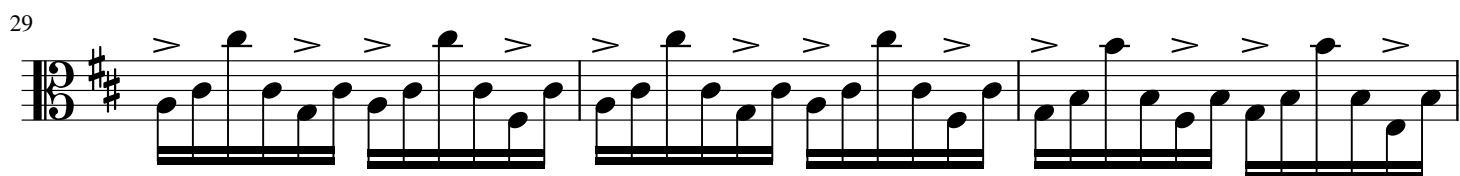
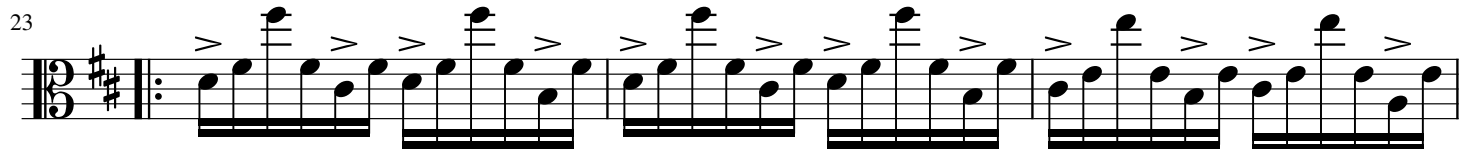
III. Allegro solenne

A

Section A of the musical score, measures 1 through 18. The music is written in 3/8 time with a key signature of one sharp (F#). The notation features a series of eighth and sixteenth notes, often beamed together, with various articulations such as slurs and accents. Measure 10 includes a repeat sign followed by two first and second endings. The section concludes in measure 18 with a double bar line and a final chord.

B

Section B of the musical score, measures 19 through 22. The notation continues with eighth and sixteenth notes, including slurs and accents. Measure 22 ends with a double bar line and a final chord.



D.C. to B
and skips to C

