

Oboe 1

Soler Flair

1.

Soler/Johnson

Allegro

14

37

52

65

74

103

117

133

f

p

f

p

f

p

f

p

5

14

8

3

15

2

2

6

6

9

4

5

tr

tr

tr

tr

Oboe 1

Oboe 1

146 *f*

154

2.

165 **Allegro**) $\text{♩} = 104$

f

173

p

181

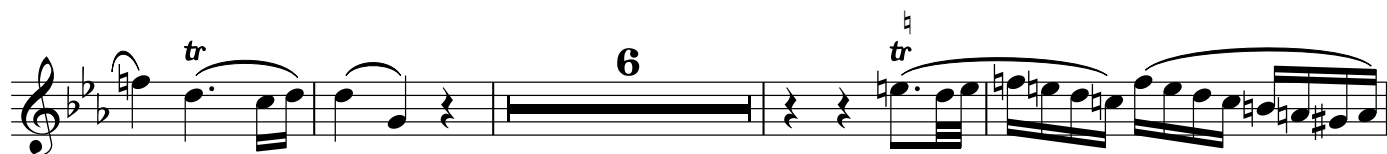
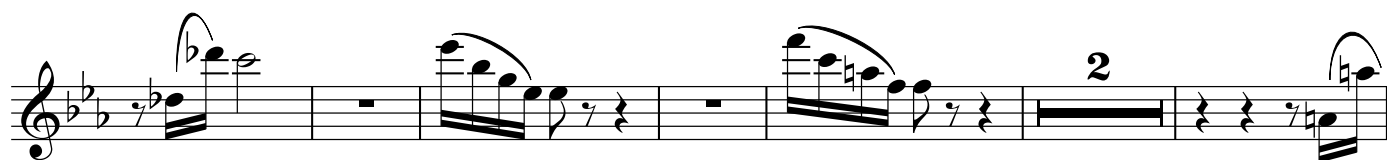
188

199 *f*

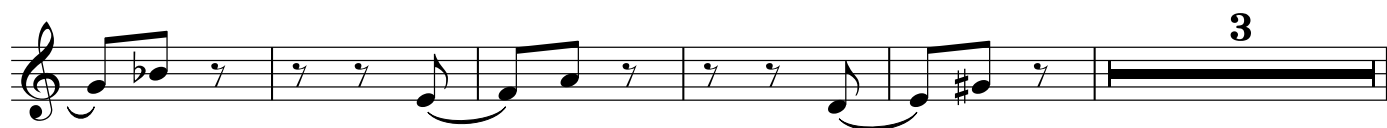
205

213

p

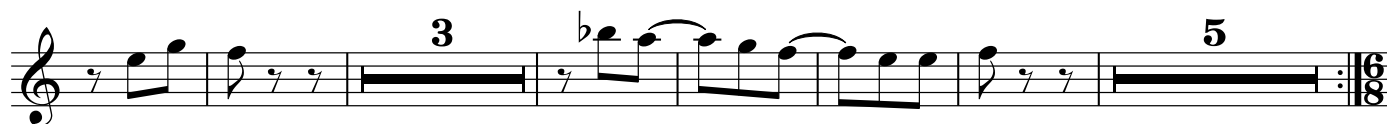
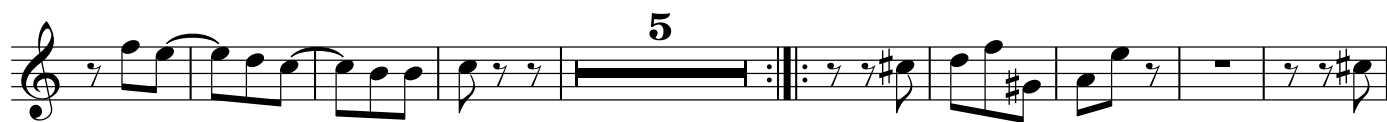
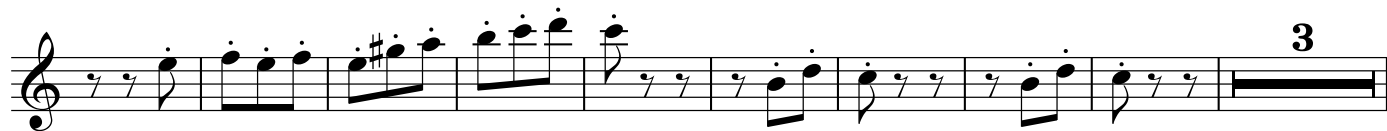
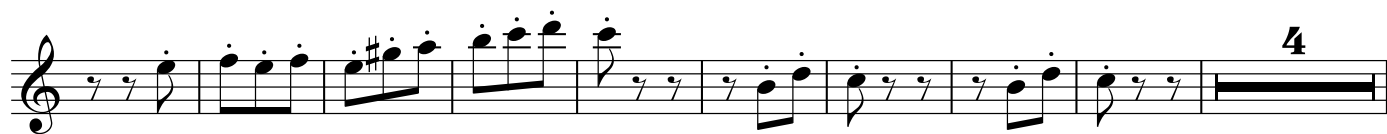


3.



Oboe 1

Oboe 1



4.

Allegro non tanto (♩=108)



3

4

tr

8

tr

tr

7

f

3

2

p

5

f

4

tr

(tr)

tr

6

Oboe 1

2

2

2

2

tr.

Oboe 2

Soler Flair

1.

Soler/Johnson

Allegro

5

f

14

14

p

3

f

38

13

f

58

tr

3

70

15

p

2

2

95

6

f

7

116

126

7

p

4

7

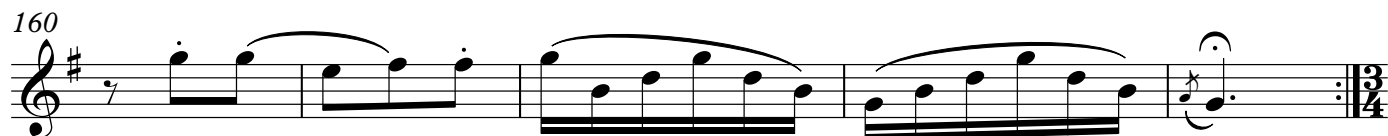
f

149

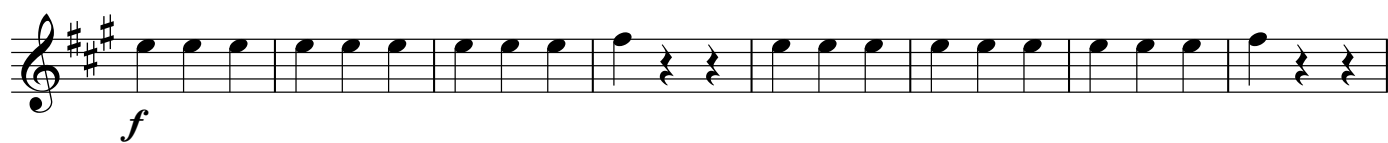
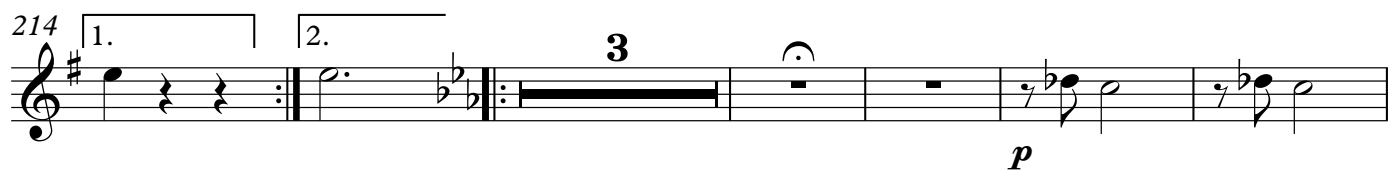
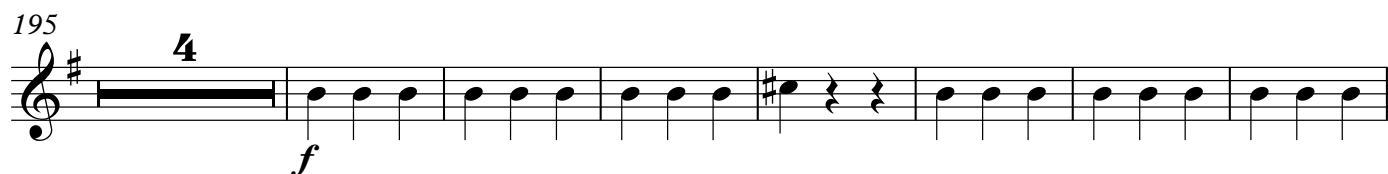
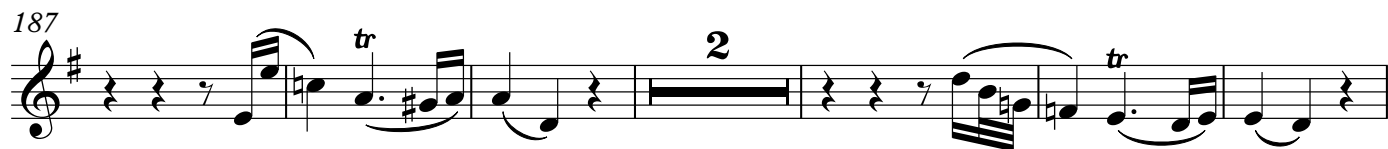
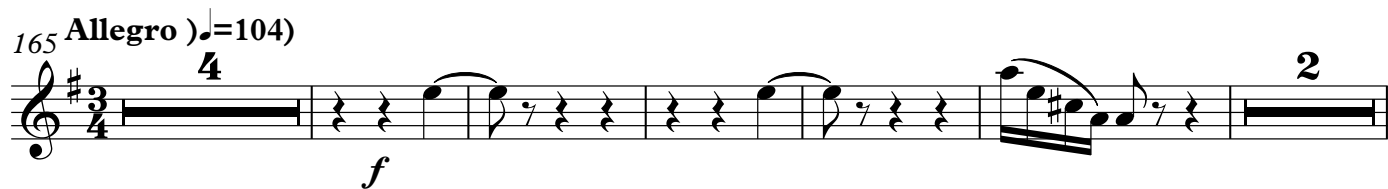
3

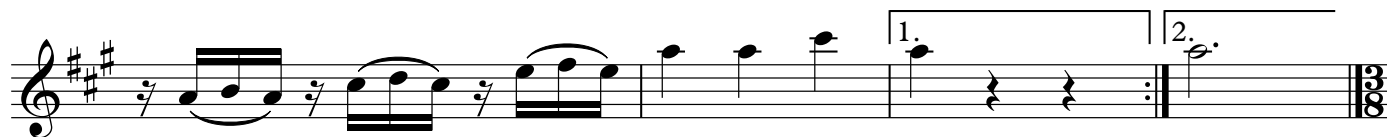
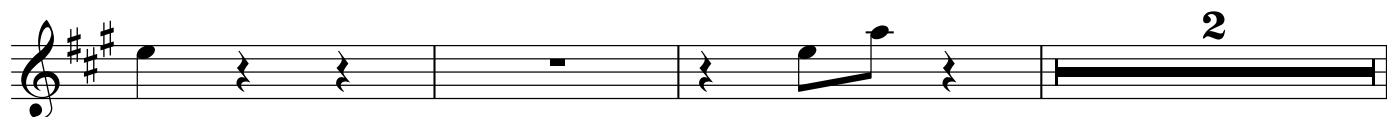
Oboe 2

Oboe 2



2.





3.



Oboe 2

Oboe 2

Musical score for Oboe 2, measures 1-12. The score is written in treble clef with a key signature of one flat (B-flat). The tempo is marked 'Allegro non tanto' with a metronome marking of 108. The score includes various musical notations such as eighth notes, quarter notes, and rests. There are also dynamic markings like 'f' (forte) and 'fz' (forzando). The score is divided into measures, with some measures containing multiple notes and others containing rests. The final measure of the first system is a double bar line followed by a repeat sign and a final double bar line.

4.

Allegro non tanto (♩=108)

Musical score for Oboe 2, measures 13-21. The score is written in treble clef with a key signature of one flat (B-flat). The tempo is marked 'Allegro non tanto' with a metronome marking of 108. The score includes various musical notations such as eighth notes, quarter notes, and rests. There are also dynamic markings like 'f' (forte) and 'fz' (forzando). The score is divided into measures, with some measures containing multiple notes and others containing rests. The final measure of the first system is a double bar line followed by a repeat sign and a final double bar line.

3
f

3

2
p

5
f

15

tr *tr* 6

2