

Trombone 2
mute: straight

Concerto stilizzato

paraphrase on a motif by Brahms

PARTE PRIMA: "CADENZA"

Adagio ♩ = 60 Cadenza Tamás Beischer-Matyó

22 25 30 35

ppp *ff* *ff*

poco rall. Poco sostenuto

6/4

PARTE SECONDA: "FORMA-SONATA"

Allegro con brio ♩ = 180 (♩ = 60)

35 40 55 60 65

ff *ff* *ff* *ff* *meno f* *p*

Hn., Tba. *f* *mf* *f*

4 Fl. 1 *f molto espressivo*

Copyright Tamás Beischer-Matyó, 1996

www.beischermatyó.hu/concerto_stilizzato

This work is licensed under the Creative Commons Attribution-NonCommercial-NoDerivatives 4.0 International License.
To view a copy of this license, visit www.creativecommons.org/licenses/by-nc-nd/4.0/

75 Hn. 2, 4 80

p *mf* *f*

85

f *sf* *p* *mf* *p* *mf* *p*

poco ritard. Sostenuto $\text{♩} = 48$ ($\text{♩} = 144$)

95

p *ff grandioso*

allarg. a tempo $\text{♩} = 60$ ($\text{♩} = 180$)

100

105 Hn. 1-3 poco ritard. a tempo

f *pp*

110 S. pno. poco ritard. a tempo ten. ten.

mp *pp* *mp*

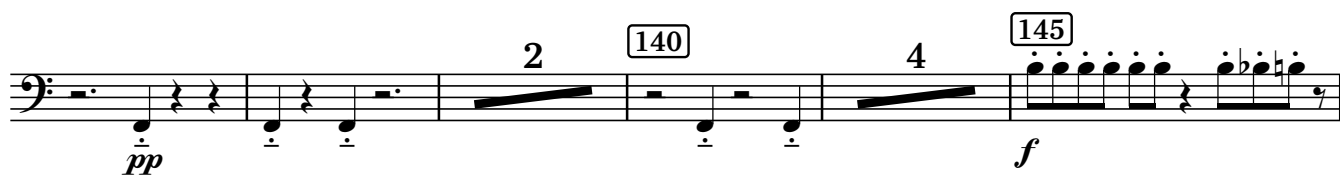
115

mf *f*

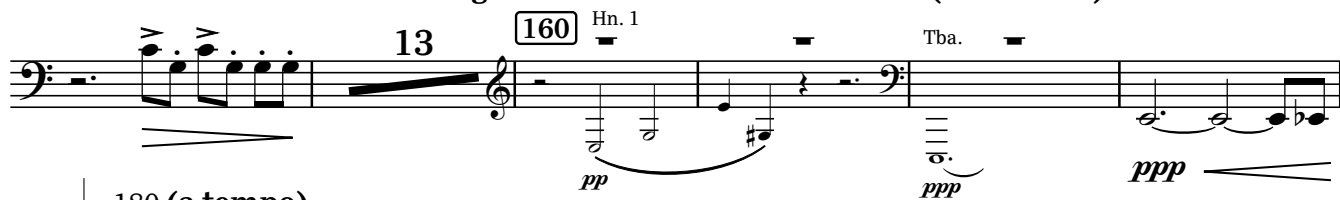
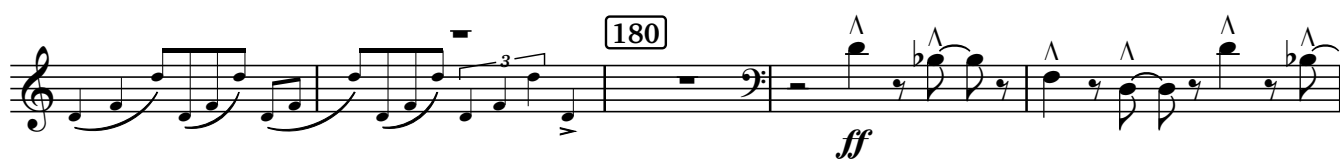
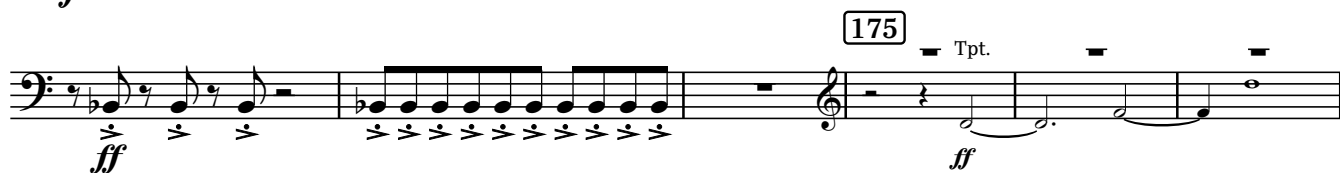
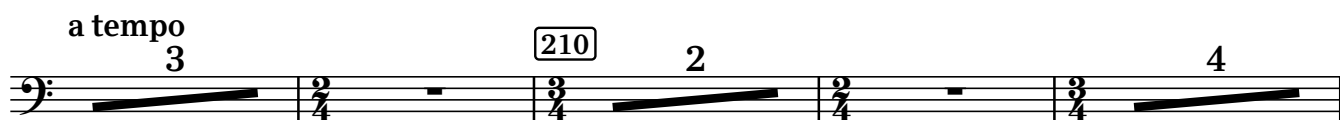
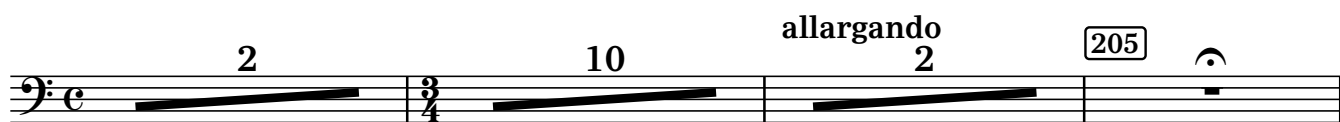
125

molto rall. a tempo 135

pp *ff*

rall. Meno allegro $\text{♩} = 120$

(senza rall.) accel. al

 $\text{♩} = 180$ (a tempo)**PARTE TERZA: "LIED"**subito Adagio molto $\text{♩} = 60$ ($\text{♩} = \text{♩}$)($\text{♩} = \text{♩}$)

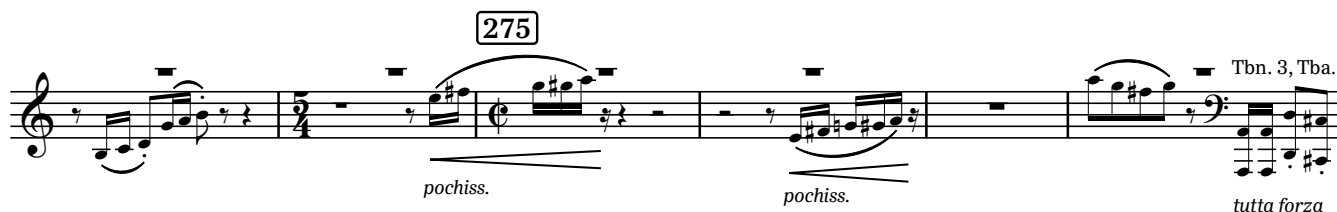
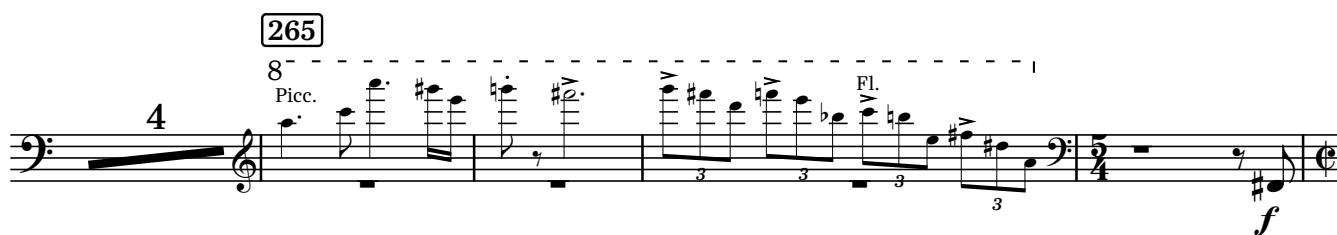
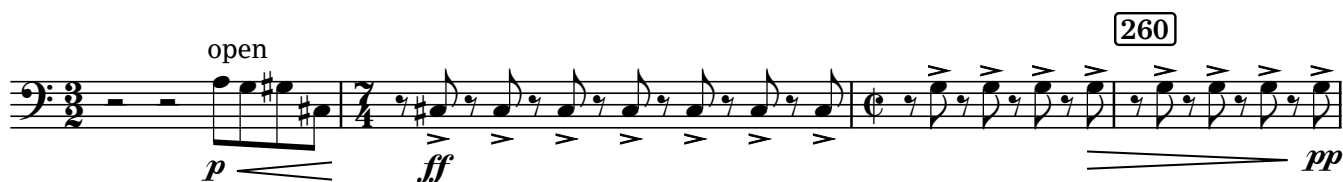
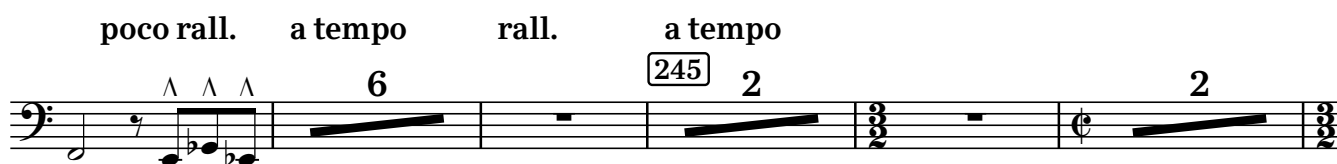
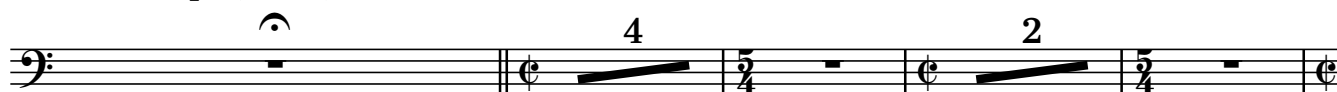
molto rall.

più adagio e molto flessibile $\text{♩} = 48$ poco a poco allarg.

PARTE QUARTA: "RONDÒ"

a tempo (♩ = 48) rall.

Allegro vivace ♩ = 180 (♩ = 90)



280

tutta forza

3

S. pno.

p marcato

290

poco ritard. a tempo

Tbn. 1

295

p

300

7

Tpt. 1-2

310

flutt.

ff

rall. - - - - - Meno vivace ♩ = 144

ord. flutt.

ord. flutt.

ord. flutt.

315

7

WW., Tba.

325

Tpt.

sf *ppp*

ord.

330

9

340

rall. a tempo

4

345

sf *ppp*

Hn., Tpt.

ff

3

3

3

3

rall. - - - - -

[350] Allegro vivace ♩ = 180

2

[355]

sffz *ppp*

3

[365]

2

[370]

f

[375]

poco rall. Sostenuto ♩ = 48 (♩ = 144)

[380]

ff grandioso

allarg. - - a tempo ♩ = 180

[385]

[390]

rall. molto

2

PARTE QUINTA: "CONCLUSIONE"

a tempo ♩ = 180

[395]

fff *sf* *sf* *sf*

400

ff marc.

405

410

C. a., B. cl., Hn.

f ff pp

420

flutt. (flutt.)

p ff p ff

rall. Poco sostenuto a tempo, ma poco agitato

2

ord.

ff ff

430

flutt. ord.

ff p mf ff

rall. molto

a tempo, molto pomposo

435

2

440