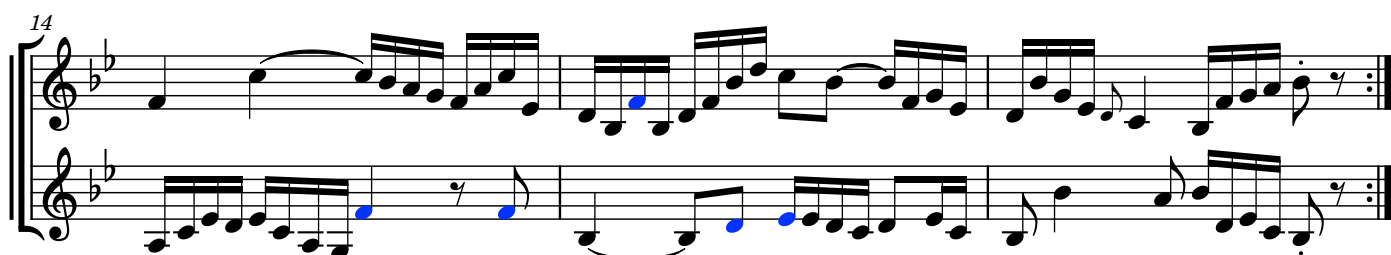
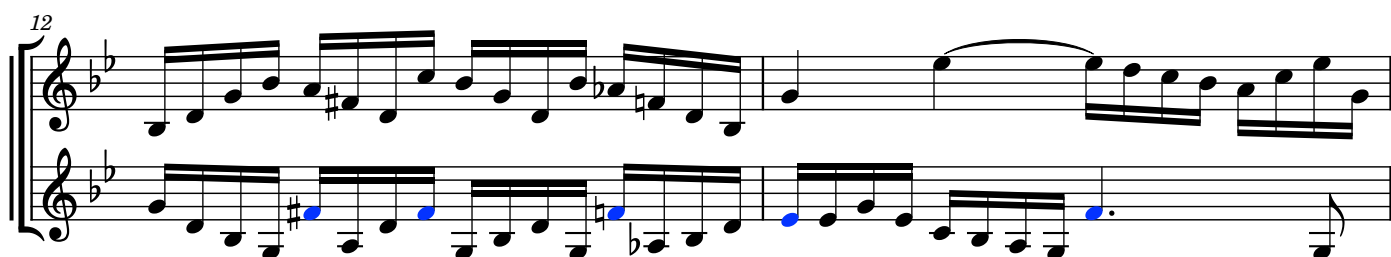
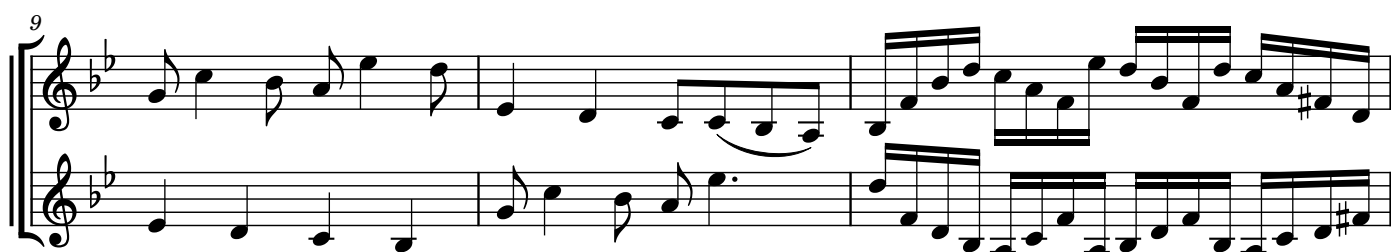


# Duo für 2 Violen F62

umgeschrieben für 2 Violinen, blaue Noten sind oktaviert

W. F. Bach

Tempo giusto



17

Measures 17-19. Measure 17 begins with a repeat sign. Measure 18 features a fermata over the first half. Measure 19 has a fermata over the first half and a blue note on the second half.

20

Measures 20-22. Measure 20 has a blue note on the second half. Measure 21 has a blue note on the second half. Measure 22 has a blue note on the second half.

23

Measures 23-25. Measure 23 has a blue note on the second half. Measure 24 has a blue note on the second half. Measure 25 has a blue note on the second half.

26

Measures 26-28. Measure 26 has a blue note on the second half. Measure 27 has a blue note on the second half. Measure 28 has a blue note on the second half.

28

Measures 28-30. Measure 28 has a blue note on the second half. Measure 29 has a blue note on the second half. Measure 30 has a blue note on the second half.

30

Measures 30-32. Measure 30 has a blue note on the second half. Measure 31 has a blue note on the second half. Measure 32 has a blue note on the second half.

32

Measures 32-34. Measure 32 has a blue note on the second half. Measure 33 has a blue note on the second half. Measure 34 has a blue note on the second half.

34

36

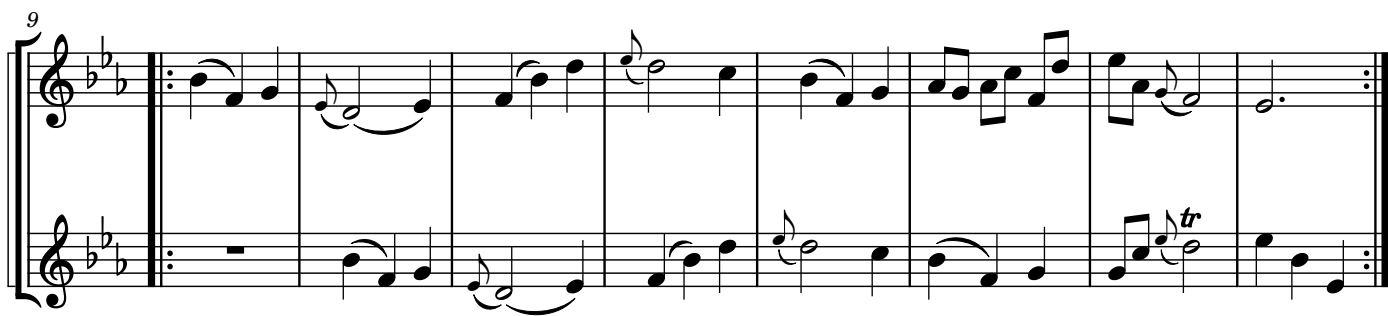
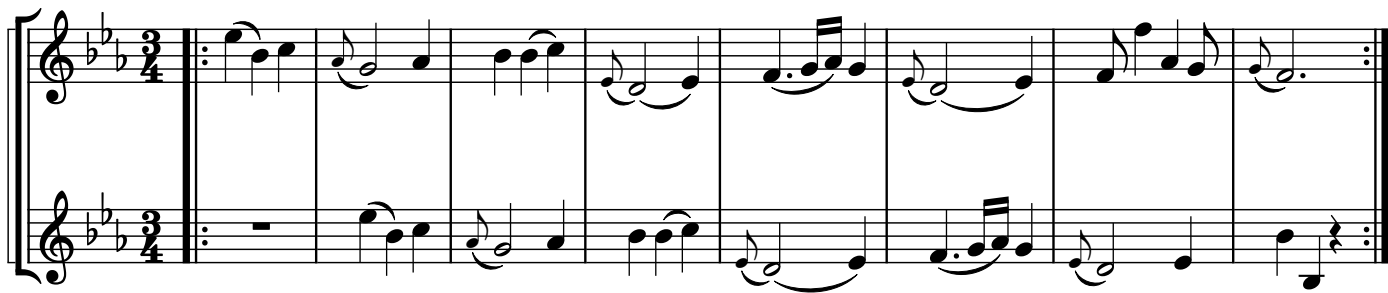
38

40

1. 2.

*tr* *tr*

Amoroso



Alla breve (Fuge)

Measures 1-9 of the musical score. The key signature is two flats (B-flat and E-flat). The time signature is Alla breve. The music is written for two staves. Measure 1 has a whole note in the treble and a whole rest in the bass. Measures 2-9 show a complex melodic line in the treble and a more rhythmic, often eighth-note, line in the bass.

Measures 10-16 of the musical score. Measure 10 is marked with a blue '10'. The music continues with intricate melodic and harmonic development between the two staves.

Measures 17-24 of the musical score. Measure 17 is marked with a blue '17'. The musical texture remains dense with many sixteenth and thirty-second notes.

Measures 25-32 of the musical score. Measure 25 is marked with a blue '25'. The piece continues its fugue-like structure with various musical motifs.

Measures 33-40 of the musical score. Measure 33 is marked with a blue '33'. The musical lines show a continuation of the complex interplay between the two staves.

Measures 41-47 of the musical score. Measure 41 is marked with a blue '41'. The music builds towards the end of the section.

Measures 48-55 of the musical score. Measure 48 is marked with a blue '48'. The final measures of this system show a resolution of the musical themes.

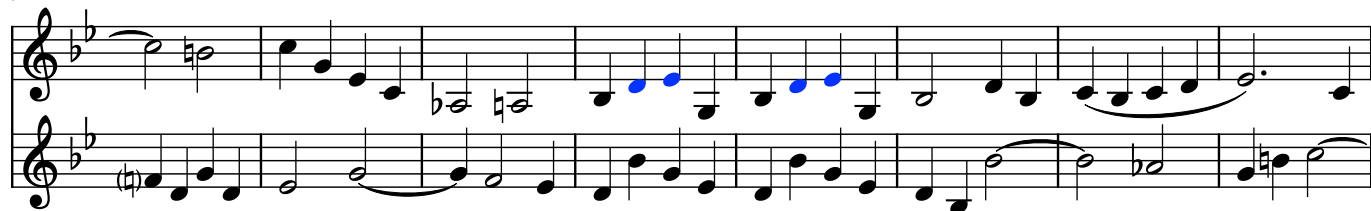
56



64



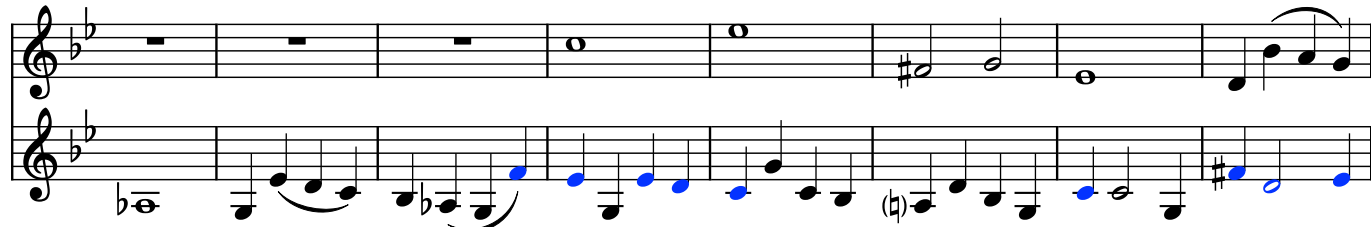
72



80



88



96



103

