

Alto

Missa Solemnis

in honorem

Sancti Michaelis Archangeli

Jorge Braun (- 1957)

Moderato

Kyrie



p Ky - ri - e e - le - i - son, Ky - ri - e e -
mf cresc.

6

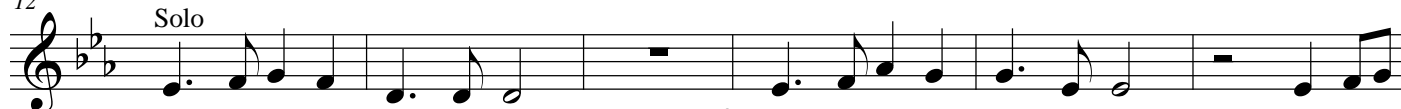


le - i - son e - le *dim.* i - son, e - le - i - son.
p

rit.

Andantino

12



p Chris - te e - le - i - son, *mf* Chris - te e - le - i - son, Chris -
cresc.

Solo

18



te e - le - i - son Chris - te, Chris - te e - le - i - son.
dim.

rit.

Con moto

2

25



mf Ky - ri - e e - le - i - son, Ky - ri - e e - le - i - son e -
f cresc.

Tutti

30



lei - son Ky - ri - e e - le *dim.* i - son, Ky - ri - e e - le - i - son.
mf p pp

a tempo

rit.

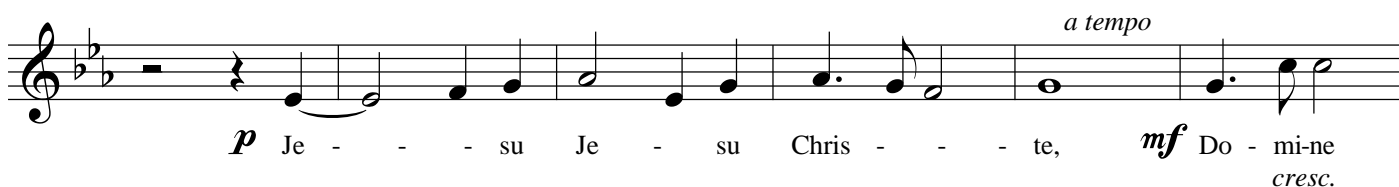
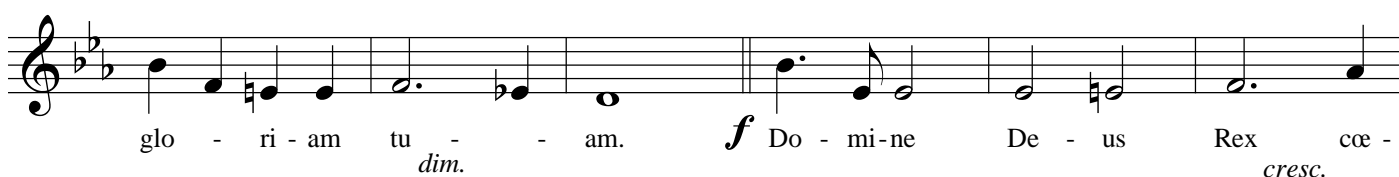
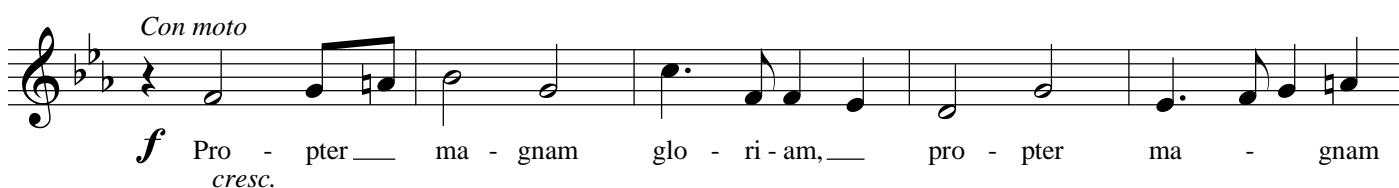
Alto

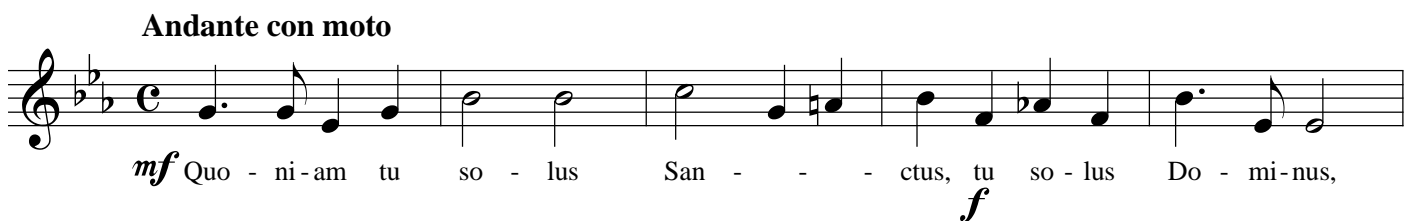
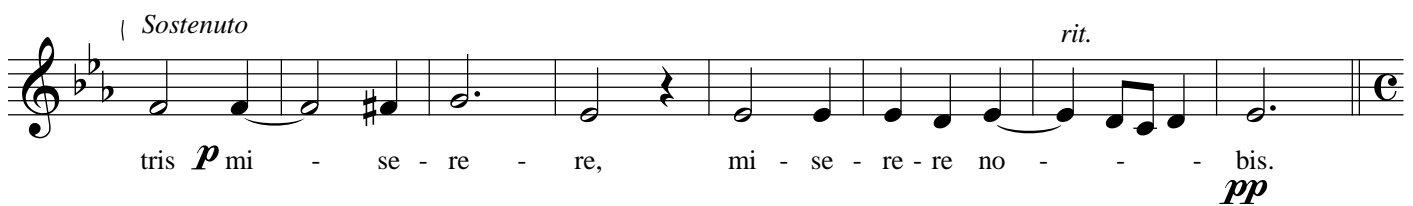
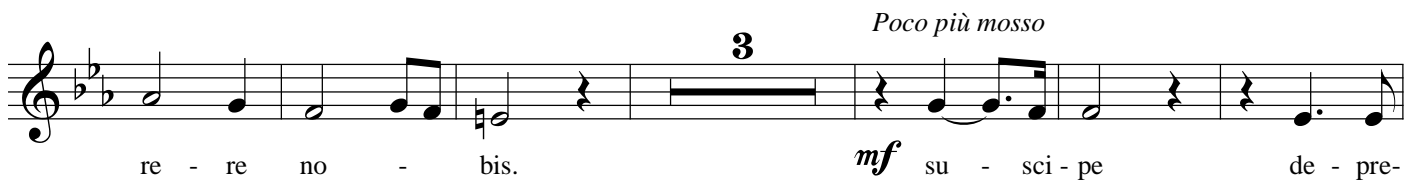
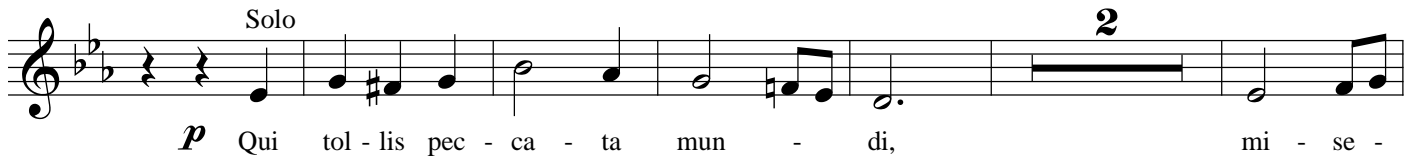
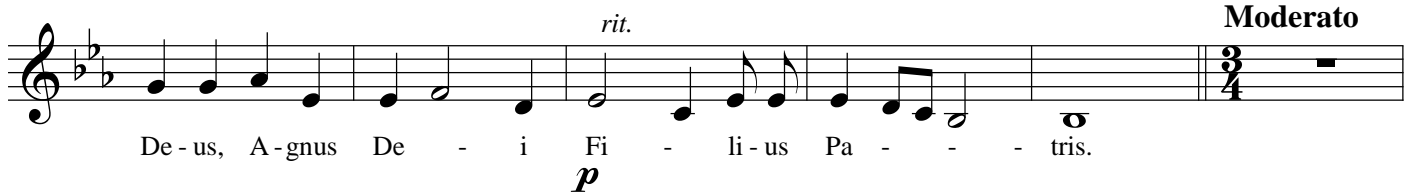
Andante con moto

Gloria



Più lento





Missa Solemnis in honorem Sancti Michælis Archangeli

Alto

f in glo-ri-a De-i Pa-tris. *mf* Cum San-cto Spi-ri-tu
cresc.

ff in glo-ri-a De-i Pa-tris. *f* A-men. A-men. A-men.
cresc.

rit. A-men. A-men.

Moderato assai

Credo

mf Pa-trem om-ni-po-ten-tem, fac-to-rem cœ-li et ter-ræ

et in-vi-si-bi-li-um *f* et in u-num Do-mi-num *mf* Je-sum

Chris-tum Fi-li-um De-i u-ni-ge-tum. *mf* De-um de
dim.

De-o, *f* De-um ve-rum de De-o ve-ro.
cresc. *dim.*

Alto

[illegible]

rit.

dit, des - cen - dit, des - cen - dit de cœ - lis.

mf *dim.* *p*

pp Et in - car - na - tus est de Spi - ri - tu San - cto

ex — Ma - ri - a Vir - gi ne *mf* et ho - mo et ho - mo

mf cresc. f dim.

fa - ctus est. *dim.* **pp** **12** Tutti *f* Et re - sur - re - xit

ter - ti - a di - e *f* et as - cen - dit in — cœ - lum

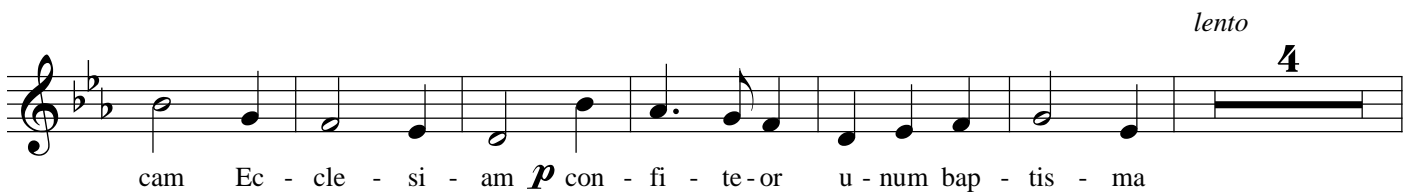
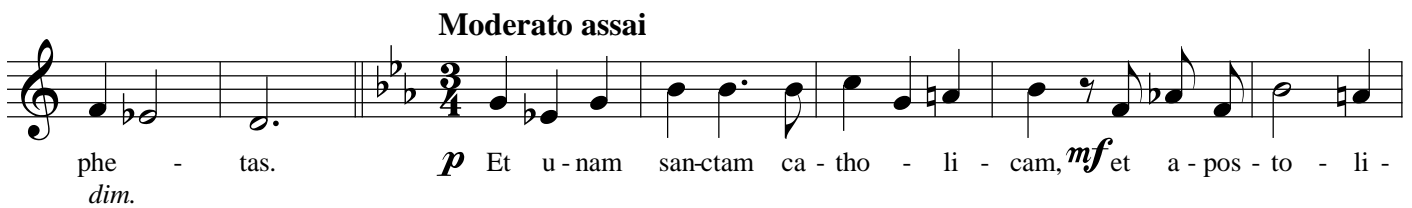
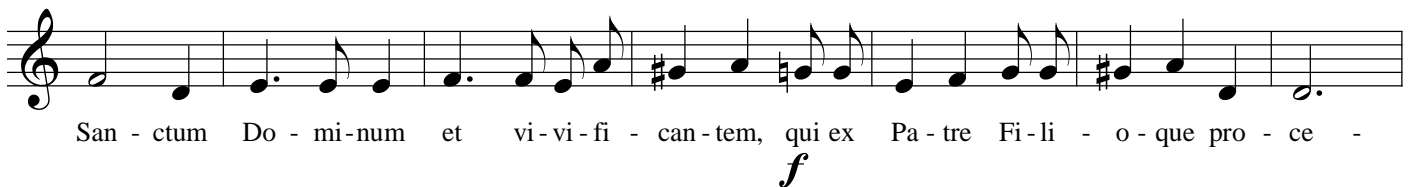
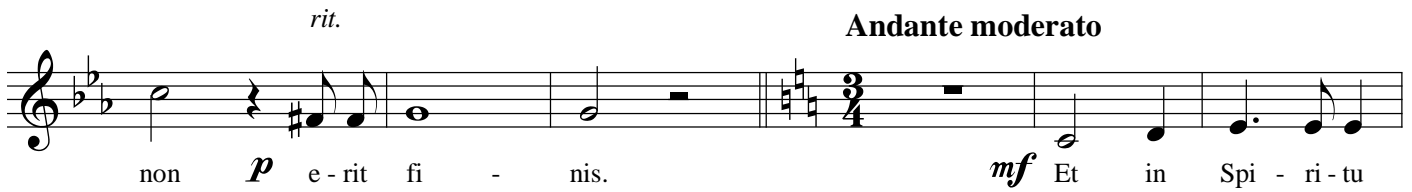
se - det ad dex - te - ram Pa - tris et i - te - rum ven - tu - rus est cum

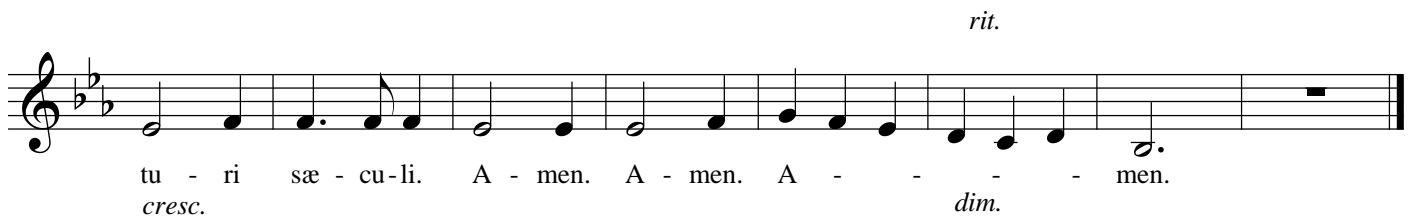
ff *marcato*

Missa Solemnis in honorem Sancti Michaelis Archangeli

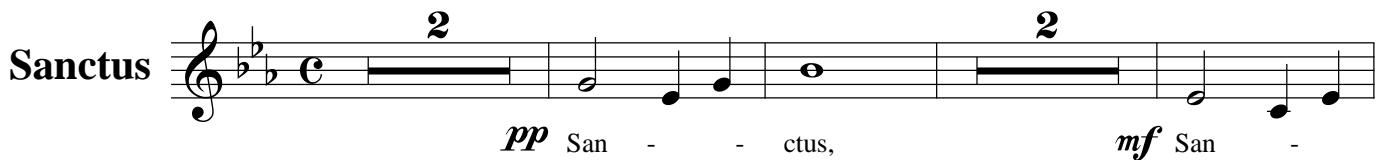
6

Alto

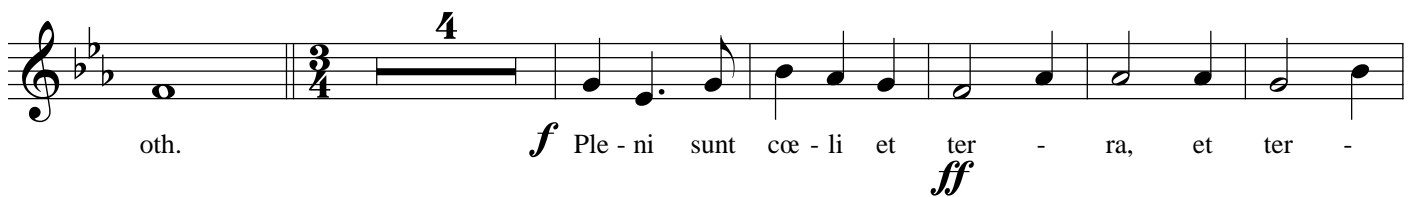




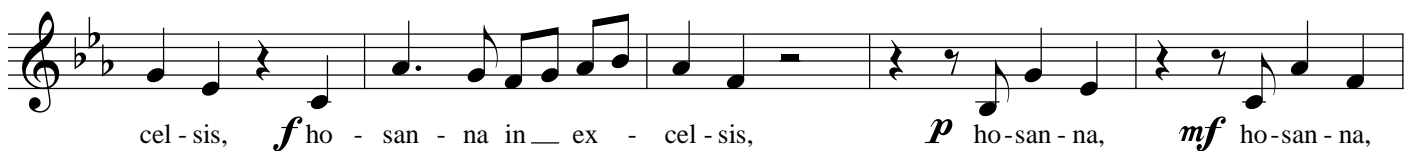
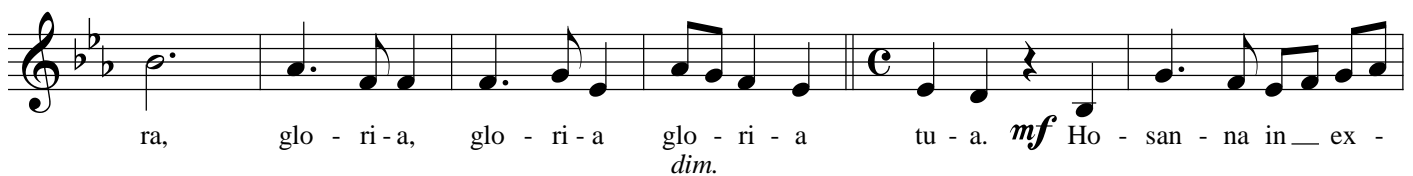
Maestoso



Con moto, marcato



animato



Missa Solemnis in honorem Sancti Michaelis Archangeli

Alto

rit. **Andante religioso**

Solo

f ho - san - na in ex - cel - sis, in ex - cel - sis. ***p*** Be - ne -

cresc. *dim.*

di - ctus qui ve - nit in no - mi - ne Do - mi - ni,

mf Be - ne - di - ctus qui ve - nit in no - mi - ne Do - mi - ni, qui

animato **Tutti**

ve - nit in no - mi - ne Do - mi - ni. ***mf*** Ho - san - na in ex -

dim.

cel - sis, ***f*** ho - san - na in ex - cel - sis, ***p*** ho - san - na, ***mf*** ho - san - na,

rit.

f ho - san - na in ex - cel - sis, in ex - cel - sis.

cresc. *dim.*

11

Agnus Dei **Larghetto**

Solo

p A - gnus De - i qui tol - lis pec - ca - ta mun - di,

Tutti

mf mi - se - re - re, mi-se - re - re no - - - bis.
cresc. *dim.*

7

mf mi - - se - re - re mi - se - re - re
cresc.

Piú mosso

no - - - bis. *dim.* *mf* A - gnus De - i A - gnus *cresc.*

De - i qui tol - lis pec - ca - ta pec - ca - ta mun - di,
mf *dim.*

Moderato

p do - na no - bis pa - - - cem, *mf* do - na no - bis pa - cem, do - na no - bis *cresc.*

rit.

pa - - - cem, do - na no - bis pa - - - cem, no - bis pa - - - cem.
dim. *p* *cresc.* *dim.* *pp* *ppp*