

Another "PLINY, COME KISS YOUR BABY"

MANDY

WON'T YOU
LET ME
BE
YOUR
BEAU

BY
J.W. JOHNSON & CO. ROSEMOND
BOB COLE & JOHNSON

Introduced & Sung by
EDDIE LEONARD
Third Successful Season with
PRIMROSE & DOCKSTADER'S
— MINSTRELS. —



EDDIE LEONARD
"I'm Going To Live Anyhow Till I Die"

Price 50
4/-

THE HOUSE OF HITS
Published by **JOS. W. STERN & CO.** 34 East 21st St. NEW YORK
LONDON JOS. W. STERN & CO.
NEW YORK CHICAGO
MARK STERN BUILDING LONDON

"While the Convent Bells Were Ringing."

THE NEW SONG HIT by the Author of "MY LITTLE GEORGIA ROSE."

A beautiful ballad by the author of the following songs which are everybody's favorites: "My Little Georgia Rose," "My Heart's To-night in Texas," "When the Birds Go North Again," and many others. Don't fail to play over this melody. It's the season's greatest Hit.

CHORUS.

con espressione.

While the Con-vent bells were ring-ing, soft and sweet a-cross the sea,

And the twi-light shades were fall-ing, then she said "Good-bye" to me;

As the sun went down in splend-or, then I kissed her lips so ten-der,

While the Con-vent bells were ring-ing o-ver the sea. . . .

While the Convent Bells &c. 3 p.—3rd page.

Copyright, MCM1, by JOS. W. STERN & CO.

This Composition can be obtained of your Music Dealer, or if not, send 25 cents to the Publishers.

JOS. W. STERN & CO.,

34 East 21st Street, New York City.

COMPLETE CATALOGUES OF
Vocal and Instrumental Publications
MAILED ON REQUEST.

Mandy, Won't You Let me be your Beau?

Words by Bob Cole.

Music by Rosamond Johnson.

Moderato.

The piano introduction consists of two systems of music. The first system is in 2/4 time, with a key signature of one sharp (F#). It features a melody in the right hand and a bass line in the left hand, both marked with a forte (f) dynamic. The second system continues the melody and bass line, also marked with a forte (f) dynamic.

The vocal entry is on a single staff, starting with a whole rest followed by a half note G4, a quarter note A4, and a quarter note B4. The piano accompaniment is in 2/4 time, with a key signature of one sharp (F#). It features a melody in the right hand and a bass line in the left hand, both marked with a mezzo-piano (mp) dynamic. The lyrics "till ready." are written below the piano part.

1. Un-der-neath the
2. When the Win-ter

The vocal entry is on a single staff, starting with a whole rest followed by a half note G4, a quarter note A4, and a quarter note B4. The piano accompaniment is in 2/4 time, with a key signature of one sharp (F#). It features a melody in the right hand and a bass line in the left hand, both marked with a mezzo-piano (mp) dynamic. The lyrics "sha-dy ce-dars, Down be-hind the sun, days are o-ver, And the rob-ins mate," are written below the piano part.

Copyright MCMII by Jos.W. Stern & Co.

Copyright and performing rights secured for Great Britain and all the British Colonies and Possessions.
Reproduction of this Music on Mechanical Instruments strictly prohibited. All rights reserved.

Where the ro - ses bloom, Breath-ing out — per -
When the rose — is red, She and I — will

fume; Lives a lit - tle dusk - y maid - en
wed; Don't you want to com - pli - ment me

She's my on — liest" one; Ev' - ry eve - ning
on my luck - y fate; When we're mar - ried

'neath her win - dow, You can hear me sing. —
we'll be hap - py, Then no more I'll sing. —

CHORUS.

Man - dy, Man - dy, I could change your name mighty hand - y,

I'll buy you fine clothes, And dia-monds by the score (ma ba by;)

Man - dy, Man - dy, Sweet - er than a car-load of can - dy,

Man - dy Oh Man - dy, won't you let me be your beau? beau?

Excerpts from the latest Hits of the Season.

Written by Johnson, Cole and Johnson.

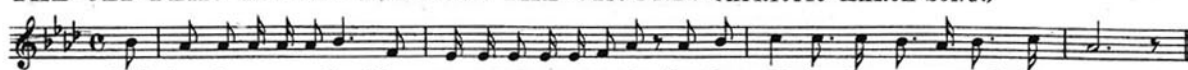
NOBODY'S LOOKIN' BUT DE OWL AN' DE MOON.

CHORUS.



Copyright 1902 by Jos.W.Stern & Co.

THE OLD FLAG NEVER TOUCHED THE GROUND. (PATRIOTIC MARCH SONG.)



Copyright 1902 by Jos.W.Stern & Co.

THE MAIDEN WITH THE DREAMY EYES.

CHORUS.



Copyright 1902 by Jos.W.Stern & Co.

MY CASTLE ON THE NILE.

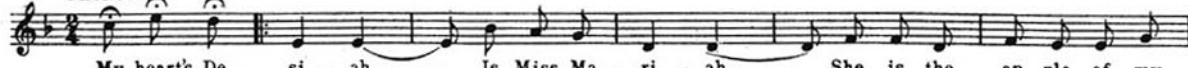
CHORUS.



Copyright 1902 by Jos.W.Stern & Co.

MY HEART'S DESIAH.

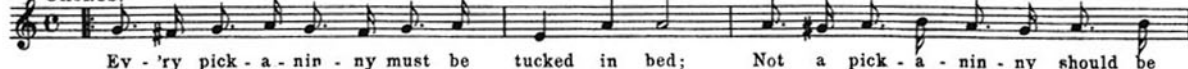
CHORUS.



Copyright 1902 by Jos.W.Stern & Co.

WHEN DE JACK O' LANTERN STARTS TO WALK ABOUT.

CHORUS.



Copyright 1902 by Jos.W.Stern & Co.

MAGDALINE MY SOUTHERN QUEEN.

CHORUS. (with feeling.)



Copyright 1902 by Jos.W.Stern & Co.

NO USE IN ASKIN' 'CAUSE YOU KNOW THE REASON WHY.

CHORUS. a little faster.



Copyright 1902 by Jos.W.Stern & Co.

MA MISSISSIPPI BELLE.

CHORUS.



Copyright 1902 by Jos.W.Stern & Co.

WHY DON'T THE BAND PLAY?

CHORUS.



Copyright 1902 by Jos.W.Stern & Co.

I'VE GOT TROUBLES OF MY OWN.

CHORUS.



Copyright 1902 by Jos.W.Stern & Co.

Complete Copies can be had at all Music Stores.

PUBLISHED BY JOS. W. STERN & CO., 34 E. 21ST ST., N.Y.

George Rosey's LATEST SUCCESSES

On Duty. March and Two-Step.

Tempo di Marcia.

by GEORGE ROSEY.



HAIL TO THE BRIDE. March and Two-Step.

Trio.

by GEORGE ROSEY



The Gainsborough. March and Two-Step.

by GEORGE ROSEY

Tempo di Marcia.
Piano.



Adoration. WALTZES.

by GEORGE ROSEY



La Spanola. Spanish Medley Waltzes.

Selected and arranged by
GEORGE ROSEY



Belles and Beaux. WALTZES.

by GEORGE ROSEY.



These Compositions can be obtained of all Up-to-Date Music Dealers

NOBODY'S LOOKIN' BUT THE OWL AND THE MOON.

This Beautiful Darkey Love Song was the sensation of Klaw & Erlanger's production of "The Sleeping Beauty and the Beast." It has the extraordinary record of having been the big feature song of the show AN ENTIRE SEASON and is the most talked of song of the day. Just try over the chorus below, and you'll soon see why everyone leaving the theatre after the performance goes away humming it.

CHORUS.

No - bo - dy's look - in' . . . but de owl an' de moon, De night is balm - y . . .

mp

. . . fo' de month is June, Den my lit - tle Hon - ey, Hon - ey,

Come to meet me soon, While no - bod - y's look - in' but de owl an' de

moo - - - - oo - oo - - oo - oon but de owl an' de moon.

dim. poco a poco. morendo. pp D.S.

Copyright, MCMI. by JOS. W. STERN & CO. English Copyright Secured.

This Composition can be obtained of your Music Dealer, or if not, send 25 cents to the Publishers.

JOS. W. STERN & CO.,

34 East 21st Street, New York City.

{ COMPLETE CATALOGUES OF
Vocal and Instrumental Publications
MAILED ON REQUEST. }