

# Vier Gesänge

## für Stimme und Kammerensemble

Arr.: Noah Damm

**I** Grave

Flöte

Klarinette in B

Fagott

Akkordeon

Horn in F

TACET

Stimme

Schla-fen, Schla-fen, nichts als Schla - fen! Kein Er - wa - chen, —

Harfe

Violine 1

Violine 2

Bratsche

Violoncello

Kontrabass

[illegible]

12

Fl.

B Kl.

Fgt.

Akk.

F Hn.

St.

Hrf.

VI. 1

VI. 2

Bra.

Vc.

Kb.

*mp* *cresc.*

*mf* *cresc.*

*p*

tra - fen Lei - ses-stes Er - in - nern kaum, — dass ich, wenn des Le - bens

*cresc.*

*cresc.*

*cresc.*

*cresc.*

*cresc.*

*cresc.*

16

Fl.

B. Kl.

Fgt.

Akk.

F. Hn.

St.

Hrf.

Vl. 1

Vl. 2

Bra.

Vc.

Kb.

*f*

*mf*

*mp*

*p*

Fül - le nie - der klingt in mei - ne Ruh', nur noch tie - fer mich ver - hül - le,



II Langsam

29

Fl.

*pp* *pppp*

B Kl.

*pp* *pppp*

Fgt.

*pp* *pppp*

Akk.

*pppp* *pp*

F Hn.

St.

*pp*

Schla-fend trägt man mich in mein Hei - mat - land..

Hrf.

*pppp*

Vi. 1

*pppp* *pp*

Vi. 2

*pppp* *pp*

Bra.

*pppp* *pp*

Vc.

*pppp* *pp*

Kb.

*pppp* *pp*

36

Fl.

B Kl.

Fgt.

Akk.

F Hn.

St.

Hrf.

VI. 1

VI. 2

Bra.

Vc.

Kb.

*mf*

*pp*

*f*

Fer - ne komm' ich her, - ü - ber

Detailed description of the musical score: The score is for measures 36 to 40. The key signature is B-flat major (two flats). The time signature is 4/4. The instruments and their parts are: Flute (Fl.) starts in measure 37 with a melodic line, marked *mf*. B Clarinet (B Kl.) and Bassoon (Fgt.) have supporting parts. Piano (Akk.) provides harmonic support with chords and single notes. F Horn (F Hn.) has a melodic line starting in measure 39, marked *f*. Saxophone (St.) has a melodic line starting in measure 39, marked *f*. Harp (Hrf.) is silent. Violin 1 (VI. 1) and Violin 2 (VI. 2) have melodic lines. Bassoon (Bra.) has a melodic line. Viola (Vc.) and Cello (Kb.) have supporting parts. The lyrics 'Fer - ne komm' ich her, - ü - ber' are written under the Saxophone part.

41

Fl.

B Kl.

Fgt.

Akk.

F Hn.

St.

Hrf.

VI. 1

VI. 2

Bra.

Vc.

Kb.

*dim.---*

*dim.*

*dim.*

*dim.*

*dim.*

*dim.*

*dim.*

*dim.*

Gip - fel, ü - ber Schlün - - - de, ü - ber ein dun - kles Meer in mein



Erst ziemlich bewegt, 9  
dann langsamer

45

Fl.

B Kl.

Fgt.

Akk.

F Hn.

St.

Hrf.

VI. 1

VI. 2

Bra.

Vc.

Kb.

Hei - - - mat - land. Nur ich der

*pp*

*pp*

*pp*

*ppp*

*pp*

*f*

**TACET**

*p*

*pp*

*p*

*pp*

*p*

*pp*

*pp*

*pp*

49 **III** (riten.) a tempo rit.

Fl.

B Kl.

Fgt.

Akk.

F Hn.

St.

Rie - sen Stärk - sten ü - ber - wand, mich aus dem dun - kel-sten Land heim -

Hrf.

Vl. 1

Vl. 2

Bra.

Vc.

Kb.

53 **langsam**

Fl.

B Kl.

Fgt.

Akk.

F Hn.

St.

Hrf.

VI. 1

VI. 2

Bra.

Vc.

Kb.

fand an ei-ner-wei-ßen Mär-chen-hand, hal - len schwer die Glok - ken; und ich

*pp*

*cresc.*

*f*

3

3

57

Fl.

B Kl.

Fgt.

Akk.

F Hn.

St.

Hrf.

VI. 1

VI. 2

Bra.

Vc.

Kb.

*pp dim.*

*ppp*

*f*

*p*

*dim.*

*mp*

wan - ke durch die Gas - sen schlaf - be - fan - gen.

61

IV

langsam

Fl.

B Kl.

Fgt.

Akk.

F Hn.

St.

Warm — die Lüf - te,

es sprießt Gras

auf son-ni-gen

Wie - sen,

Horch,—

Hrf.

VI. 1

VI. 2

Bra.

Vc.

Kb.

[illegible]

68

Fl.

B Kl.

Fgt.

Akk.

F Hn.

St.

Hrf.

Vl. 1

Vl. 2

Bra.

Vc.

Kb.

*p*

*mp*

*mf*

*8va*

*3*

gen Dro-ben hoch im dü - stern Berg-forst, es schilzt und glit-zert kal - ter Schnee, ein

Detailed description of the musical score: The score is for measures 68-71. The Flute (Fl.) part has whole rests. The B Clarinet (B Kl.) and Bassoon (Fgt.) parts play a melodic line starting in measure 69, marked with a piano (*p*) dynamic. The Piano (Akk.) part has a bass line starting in measure 69, also marked with *p*. The French Horn (F Hn.) part has a melodic line starting in measure 68, marked with a mezzo-piano (*mp*) dynamic. The Saxophone (St.) part has a complex melodic line with triplets and an accent, with lyrics in German. The Harp (Hrf.) part has a chordal accompaniment starting in measure 70, marked with a mezzo-forte (*mf*) dynamic, including an 8va marking and a triplet. The Violins (Vl. 1 and Vl. 2) and Trombone (Bra.) parts have whole rests. The Viola (Vc.) and Cello/Double Bass (Kb.) parts play a melodic line starting in measure 69, marked with a piano (*p*) dynamic.

72

Fl.

B Kl.

Fgt.

Akk.

F Hn.

St.

Mäd-chen in grau-em Klei-de lehnt an feu-cthem Eich-stamm, krank sind ih-re zar - ten Wan - gen die grau-en Au-gen fie-bern durch

Hrf.

Vl. 1

Vl. 2

Bra.

Vc.

Kb.



75

Fl.

B Kl.

Fgt.

Akk.

F Hn.

St.

Hrf.

VI. 1

VI. 2

Bra.

Vc.

Kb.

*sffz*

*sffz*

*sffz*

*ff*

*sffz*

*gliss.*

*gliss.*

*sffz*

*sffz*

Dü - ster - rie - sen - stäm - - - - me.

"Er kommt noch nicht..

76

Fl.

B. Kl.

Fgt.

Akk.

F. Hn.

St.

Hrf.

Vl. 1

Vl. 2

Bra.

Vc.

Kb.

*sfz*

*sfz*

*sfz*

*sfz*

*f*

*ff*

*fff*

*gliss*

*ff*

*matellato*

*p*

*8va*

*8va*

*p*

*p*

*p*

*fff*

*p*

*fff*

*p*

Er lässt mich war - ten..."

Stirb!

Der Ei-ne

81

Fl.

B Kl.

Fgt.

Akk.

F Hn.

St.

Hrf.

Vi. 1

Vi. 2

Bra.

Vc.

Kb.

*mp*

*mp*

*mp*

*mp*

*ppp*

*p*

*pp*

*ppp*

*p*

*pp*

*ppp*

*p*

*pp*

*ppp*

*p*

*pp*

*ppp*

stibt, da - ne-ben der An - de lebt: Das macht die Welt so tief ——— schön.

Flöte

# Vier Gesänge

für Stimme und Kammerensemble

Arr.: Noah Damm

**I Grave**  
14

*f* *mf* *p*

22

*pp* *pp* *pppp*

**II Langsam**  
31 6

*mf* *dim.*

43

*pp*

Erst ziemlich bewegt, dann langsamer

**III**  
49 (riten.) a tempo rit. langsam 2

*pp* *dim.* *ppp*

57

**IV langsam**  
61 2 10 5

*mp* *sffz* *ppp*

82

*mp*

Klarinette in B

# Vier Gesänge

für Stimme und Kammerensemble

Arr.: Noah Damm

**I Grave**

4

*pp*

3

*mp cresc.*

16

*f*

*mf*

21

*p*

*pp*

*pp* *pppp*

**II Langsam**

31

6

43

*dim.*

2

*pp*

Erst ziemlich bewegt,  
dann langsamer

**III**

49

(riten.)

a tempo

54

langsam 2

*pp dim.*

58

3

3

3

(dim.)

*ppp*

**2** IV langsam

61

74

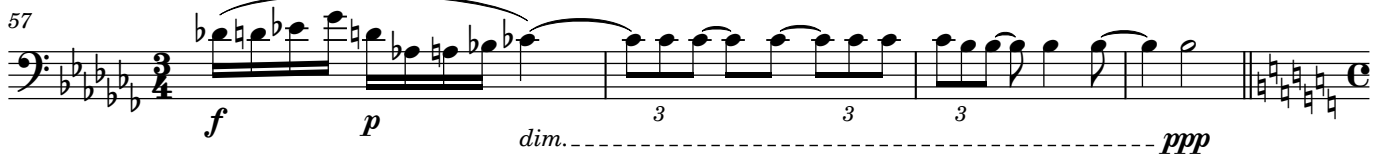
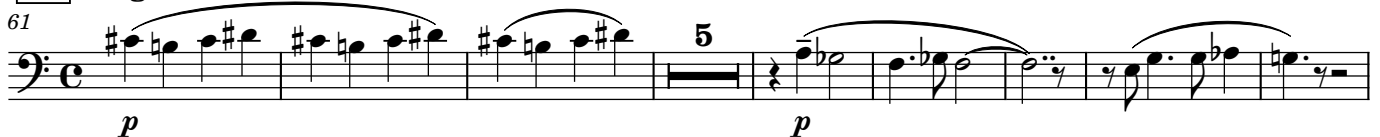
74 

## Fagott

# Vier Gesänge

für Stimme und Kammerensemble

Arr.: Noah Damm

**I** Grave**II** Langsam**III****IV** langsam

# Vier Gesänge

für Stimme und Kammerensemble

Arr.: Noah Damm

**I**

Grave

10

18

30

**II** Langsam

40

48

**III**Erst ziemlich bewegt,  
dann langsamer

(riten.)

a tempo



2

53 **langsam**

2 3 3 3

*pp dim.*

60 **IV** **langsam**

3 3

*(dim.) ppp*

*p*

66

3 3

*pp*

*p*

74

*sffz*

76

*sffz*

*ff matellato*

*mp*

Horn in F

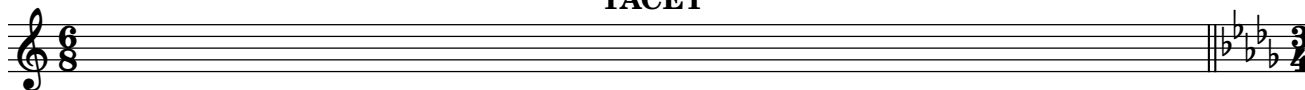
# Vier Gesänge

für Stimme und Kammerensemble

Arr.: Noah Damm

## I Grave

TACET



## II Langsam



Erst ziemlich bewegt,  
dann langsamer

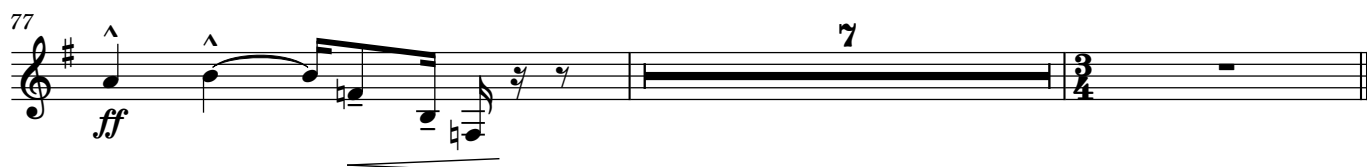
## III

(riten.)

langsam



## IV langsam



Harfe

# Vier Gesänge

für Stimme und Kammerensemble

Arr.: Noah Damm

**I** Grave

*pp*

8

*mf*

12

3 3 2 2

*f*

20

2 2

*p*

26

*mp* *dim.* *pppp*

3/4 3/4

## 2 II Langsam

Erst ziemlich bewegt,  
dann langsamer

31

TACET

49 III (riten.) **langsam**

*pp* *cresc.*

57

61 IV **langsam**

*p* *mp* *mf*

71

*8va* *3* *3* *sffz*

76

*sffz* *fff* *8va* *5* *5* *ppp*

Violine 1

# Vier Gesänge

für Stimme und Kammerensemble

Arr.: Noah Damm

## I Grave

5

12

17

24

*p* *mf* *f* *pp*

*cresc.*

*dim.*

*pppp*

## II Langsam

31

39

44

*pp* *p* *mf*

*dim.---*

*pp*

Erst ziemlich bewegt,  
dann langsamer

## III

49

(riten.) a tempo

3 3

langsam

56

3

2  
61 **IV** **langsam** 9 4

*p* *gliss.*

80

*p* *p* *pp* *ppp*

Violine 2

# Vier Gesänge

für Stimme und Kammerensemble

Arr.: Noah Damm

## I Grave

5

*p* *mf* *p*

12

*cresc.* *f* *mf* *mp*

20

26

*mp* *dim.* *pppp*

## II Langsam

31

*pp*

40

44

*dim.* *p* *pp*

Erst ziemlich bewegt, dann langsamer

## III

49

(riten.) *a tempo* *langsam*

3 3

56 

74 

80

*p* *p* *pp* *ppp*



## Bratsche

# Vier Gesänge

für Stimme und Kammerensemble

Arr.: Noah Damm

**I** Grave 6

12

19

26

*p* *mf* *p* *cresc.* *f* *dim.* *pppp*

**II** Langsam

31

38

45

*pp* *p* *pp*

Erst ziemlich bewegt,  
dann langsamer

**III**

49

(riten.) a tempo langsam

2

56

61 **IV** **langsam**

72



80



Violoncello

# Vier Gesänge

für Stimme und Kammerensemble

Arr.: Noah Damm

## I Grave 6

*p* *mf* *p*

*mf* *cresc. f* *mp*

*p*

*mp* *dim.* *pppp*

## II Langsam

*pp*

*dim.* *pp*

Erst ziemlich bewegt,  
dann langsamer

## III

*mf*

(riten.) a tempo langsam

2

56

*f* *mp*

61 **IV** *langsam*

*p* *p* *p* *p* *p*

75

*gliss.* *sffz* *sffz* *ff*

78

*fff* *p* *p* *pp* *ppp*

## Kontrabass

# Vier Gesänge

für Stimme und Kammerensemble

Arr.: Noah Damm

**I Grave**

7

*p* *mf*

13

*cresc.* *f*

19

*mp* *dim..* *pppp*

8

**II Langsam**

31

*pp*

4

43

*dim.* *pp*

Erst ziemlich bewegt,  
dann langsamer

**III**

49

*f* *mf* *(riten.)* *a tempo* *langsam*

55

*f* *3*

2 **IV** **langsam**

61

4 2

*p* *p* *<*

This system contains measures 61 to 64. Measure 61 starts with a 4-measure rest, followed by a half note G2. Measure 62 has a 2-measure rest, followed by a half note G2. Measure 63 contains a half note G2, a half note A2, a half note B2, and a half note C3, all beamed together. Measure 64 contains a half note D3, a half note E3, a half note F3, and a half note G3, all beamed together. Dynamics include piano (*p*) and an accent (<).

75

*sffz* *sffz* *ff*

This system contains measures 75 to 78. Measure 75 has a half note G2, a half note A2, and a half note B2, all beamed together. Measure 76 has a half note C3, a half note D3, and a half note E3, all beamed together. Measure 77 has a half note F3, a half note G3, and a half note A3, all beamed together. Measure 78 has a half note B3, a half note C4, and a half note D4, all beamed together. Dynamics include *sffz* and *ff*.

78

*fff* *p* *p* *ppp*

This system contains measures 79 to 82. Measure 79 has a half note G2, a half note A2, and a half note B2, all beamed together. Measure 80 has a half note C3, a half note D3, and a half note E3, all beamed together. Measure 81 has a half note F3, a half note G3, and a half note A3, all beamed together. Measure 82 has a half note B3, a half note C4, and a half note D4, all beamed together. Dynamics include *fff*, *p*, *pp*, and *ppp*.