

Te Deum Brasil (alternado)

Op. 65

Arranjo de Justino da Conceição

Allegro

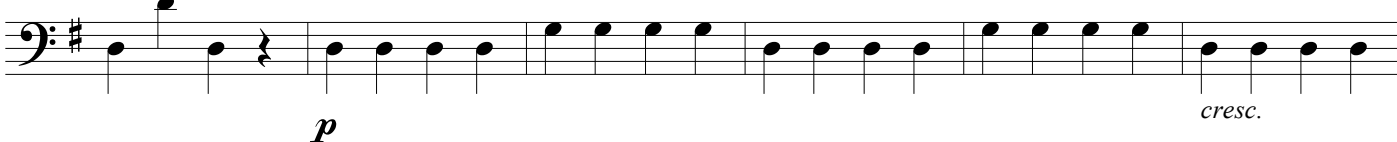
01



6



12

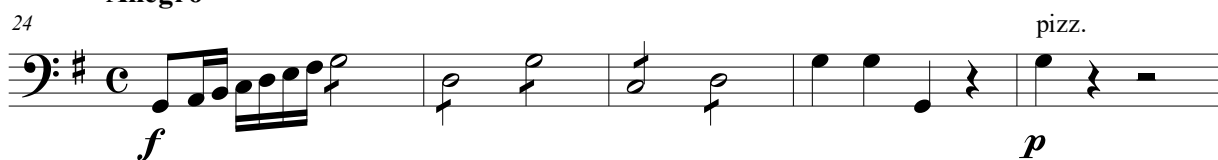


18

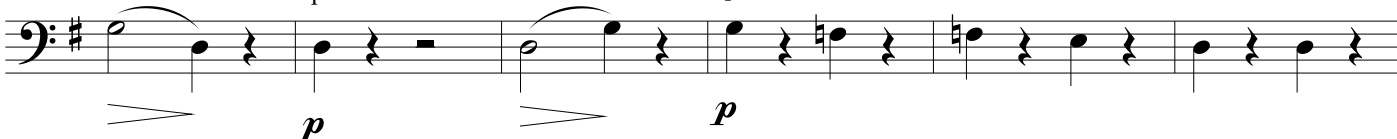


Allegro

02



29



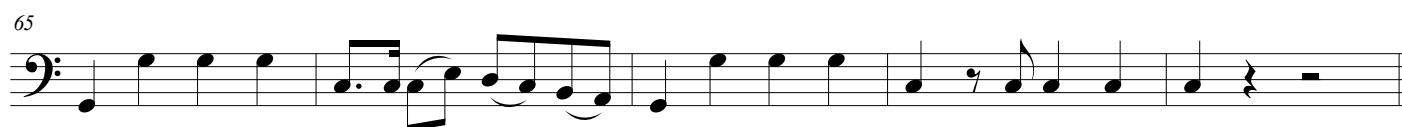
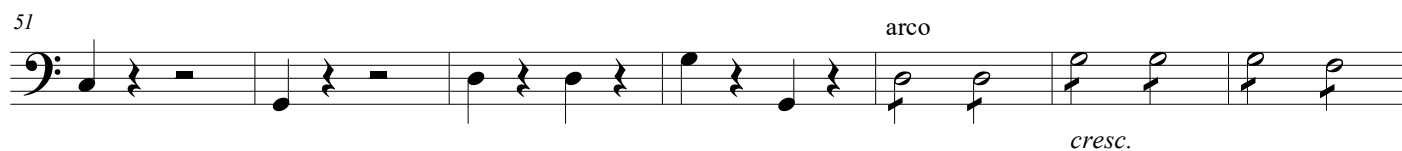
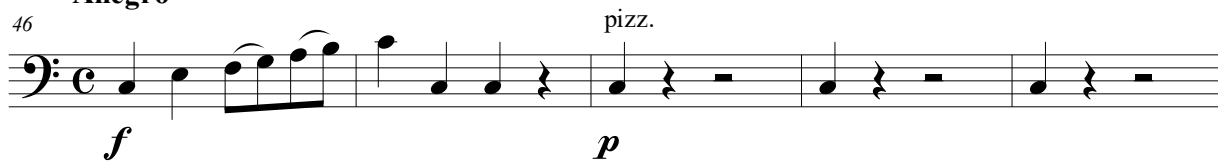
35



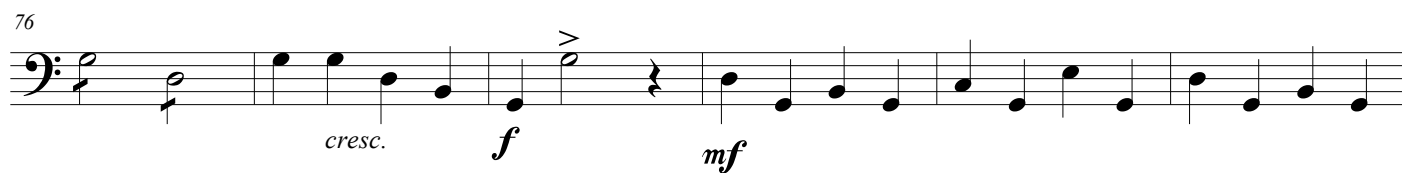
41



03 Allegro

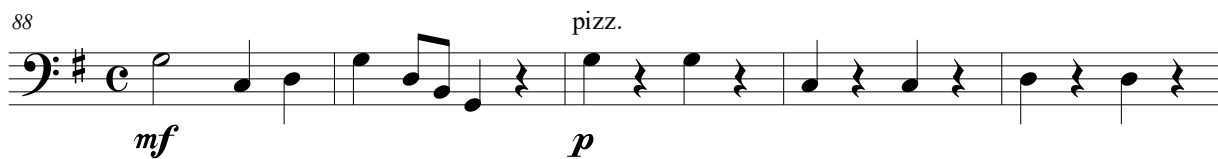


04 Allegro



Andante religioso

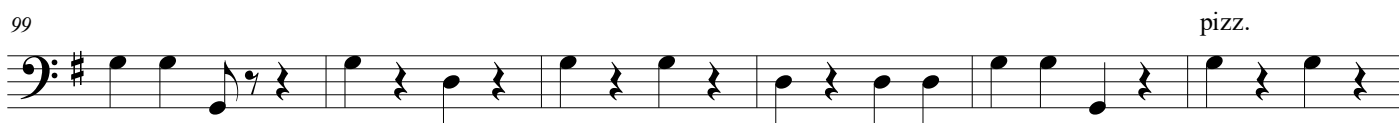
05



93



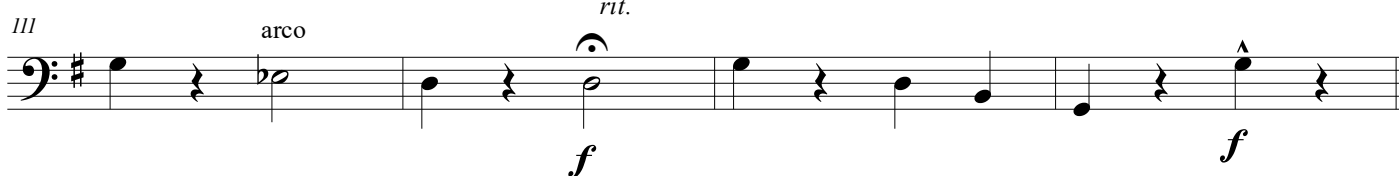
99



105



111

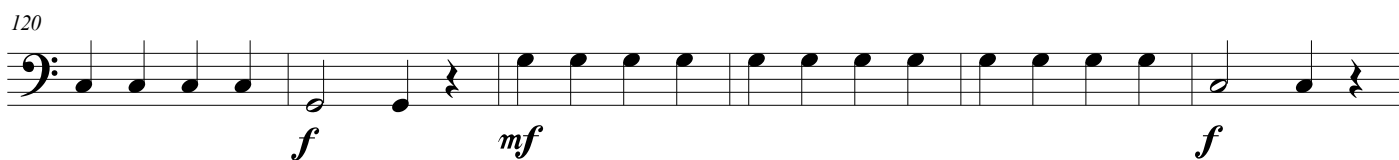


Allegro

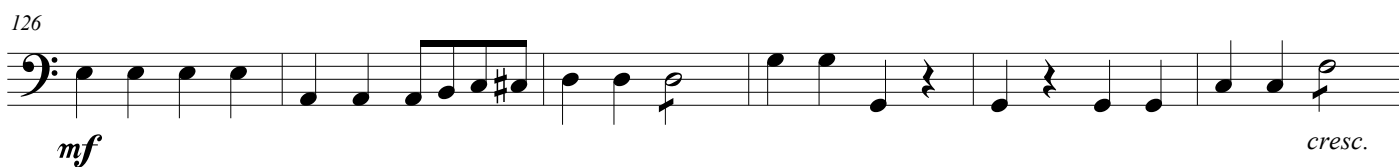
06



120



126



132



Allegro moderato

07 ¹⁴⁰



p

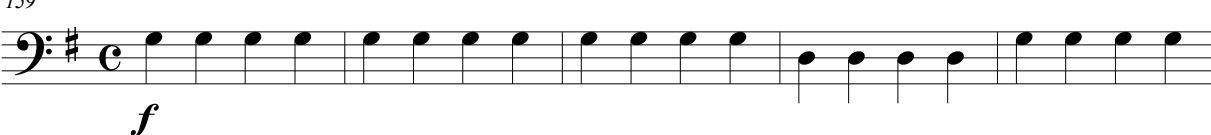
¹⁴⁹



p *cresc. f*

Allegro

08 ¹⁵⁹



f

¹⁶⁴



¹⁷⁰



mf

¹⁷⁶



cresc.

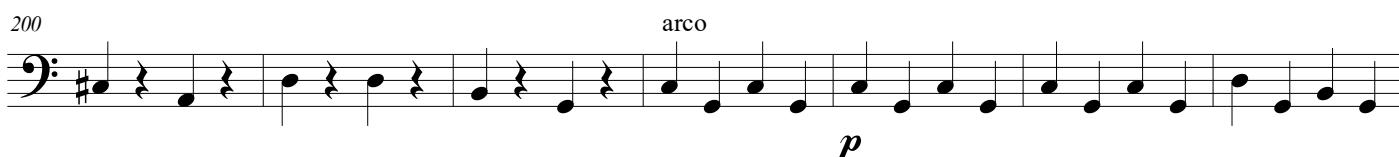
¹⁸²



f

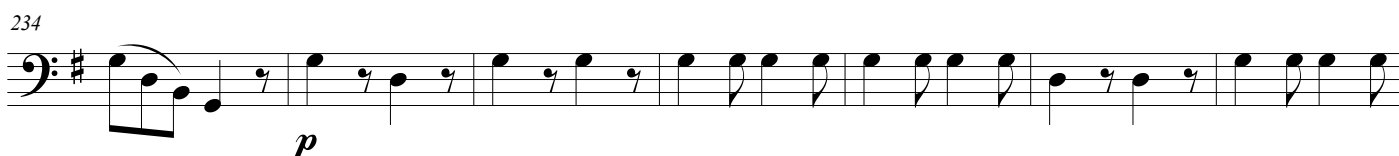
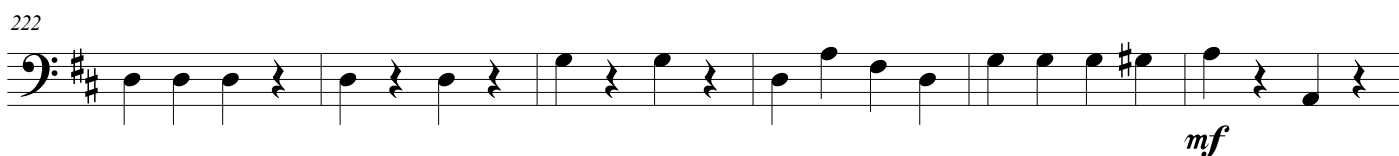
Andante levado

09



Allegro

10



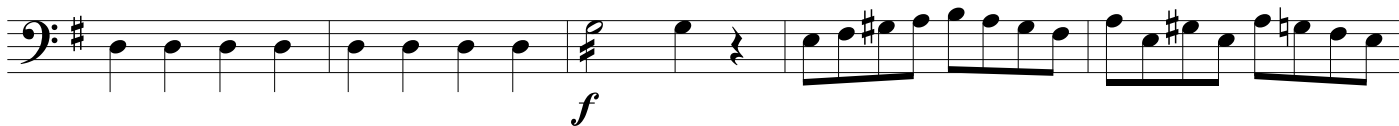
Allegro

257

11



262



267



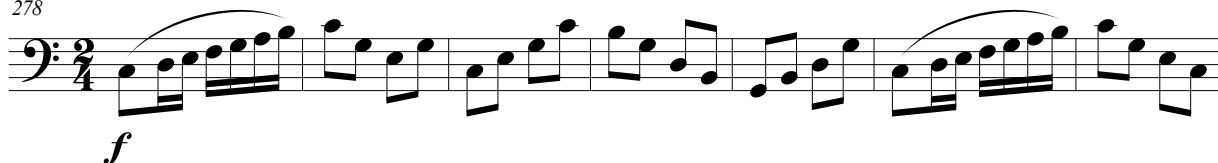
273



Allegro

278

12



285



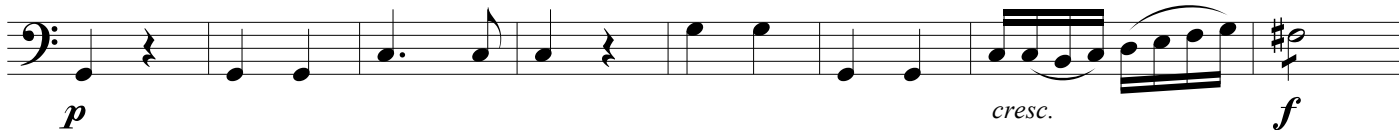
293



300



310



318



Andante

13

328

p

rall.

334

341

2

p

349

cresc.

mf

p

mf

357

f

Andante

14

363

p

cresc.

368

dim.

Brilhante

374

f

p

cresc.

f

381

p

cresc.

387

f

p

[illegible]

The musical notation for the bass line of 'The Rose Tree' is shown in a single staff. It begins with a bass clef and a key signature of one flat (B-flat). The melody starts with a series of eighth notes: B-flat, A, G, F, E, D, C, B-flat. This is followed by a half note rest, then a half note B-flat, and another half note rest. The melody continues with a half note B-flat, a half note A, and a half note G. Finally, it ends with a half note F and a half note E. The dynamics *p* (piano) and *f* (forte) are indicated below the staff.

Musical notation for the bass line of 'The Rose Tree'. The key signature is one flat (B-flat), and the time signature is 4/4. The melody consists of eighth notes, with a final measure containing a quarter rest.

The musical notation for Example 6-10 consists of five measures in bass clef with a key signature of one flat. The first measure begins with a forte dynamic marking (*f*) and contains a quarter rest followed by four eighth notes (G₂, F₂, E₂, D₂). The subsequent four measures each contain two pairs of eighth notes (G₂/F₂, E₂/D₂) separated by a quarter rest.

The musical notation for the bass staff shows a sequence of notes across three measures. The first measure contains four eighth notes: G2, F2, E2, and D2. The second measure contains four eighth notes: C2, B1, A1, and G1. The third measure contains a quarter note G1, followed by a quarter rest, then a quarter note F1, a dotted quarter note E1, and finally a half note D1. The piece concludes with a double bar line.