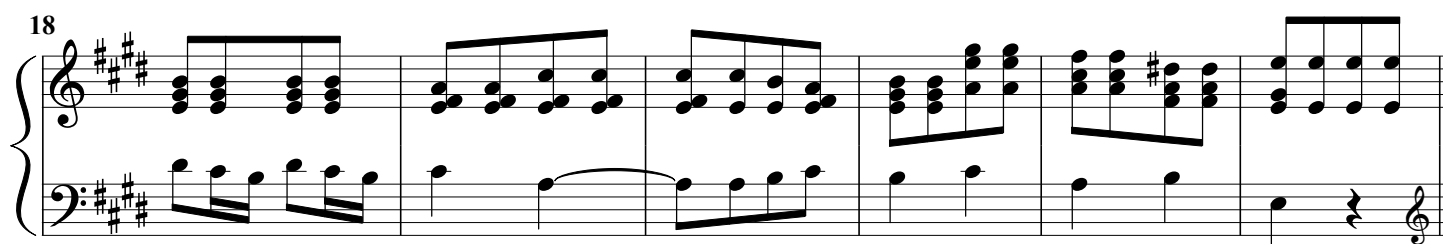
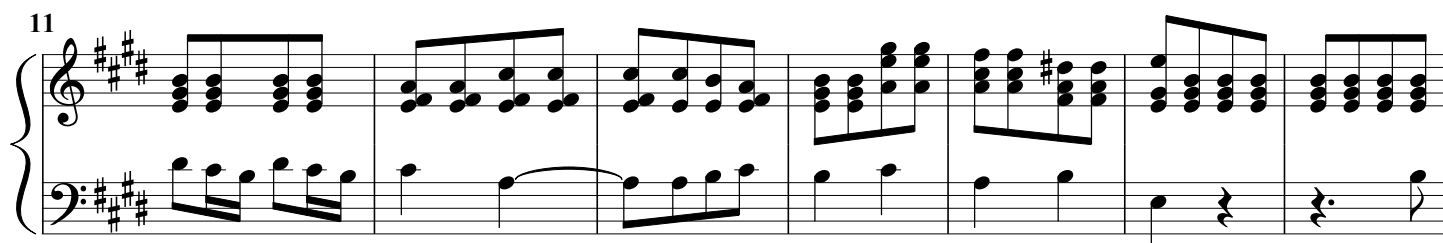


BALLADE

Jef TINEL (1885 - 1972)

Zeer vlug - gejaagd



24

Measures 24-30. Treble staff: Chords (G4-B4-D5, G4-A4-B4, G4-A4-B4, G4-A4-B4, G4-A4-B4, G4-A4-B4, G4-A4-B4). Bass staff: G3, A3, B3, C4, D4, E4, F#4.

31

Measures 31-37. Treble staff: Chords (G4-A4-B4, G4-A4-B4, G4-A4-B4, G4-A4-B4, G4-A4-B4, G4-A4-B4, G4-A4-B4). Bass staff: G3, A3, B3, C4, D4, E4, F#4.

38

Measures 38-45. Treble staff: Chords (G4-A4-B4, G4-A4-B4, G4-A4-B4, G4-A4-B4, G4-A4-B4, G4-A4-B4, G4-A4-B4). Bass staff: G3, A3, B3, C4, D4, E4, F#4.

46

Measures 46-51. Treble staff: Chords (G4-A4-B4, G4-A4-B4, G4-A4-B4, G4-A4-B4, G4-A4-B4, G4-A4-B4). Bass staff: G3, A3, B3, C4, D4, E4, F#4.

52

Measures 52-53. Treble staff: Chords (G4-A4-B4, G4-A4-B4, G4-A4-B4, G4-A4-B4, G4-A4-B4, G4-A4-B4). Bass staff: G3, A3, B3, C4, D4, E4, F#4.

54

Measures 54-57. Treble staff: Chords (G4-A4-B4, G4-A4-B4, G4-A4-B4, G4-A4-B4, G4-A4-B4, G4-A4-B4). Bass staff: G3, A3, B3, C4, D4, E4, F#4.

56

Measures 56 and 57 of a musical score in G major. The right hand features a complex texture with many beamed sixteenth notes and chords, while the left hand plays a steady eighth-note accompaniment.

58

Measures 58, 59, and 60. Measure 58 continues the eighth-note accompaniment in the left hand and complex chords in the right. Measures 59 and 60 show the right hand moving to a sustained melodic line with a slur, while the left hand continues its accompaniment.

61

Measures 61, 62, and 63. Measure 61 features a long, sustained melodic line in the right hand. Measures 62 and 63 show the right hand continuing this line, while the left hand plays a complex, rhythmic accompaniment with many beamed notes. The piece concludes with a final chord in measure 63.